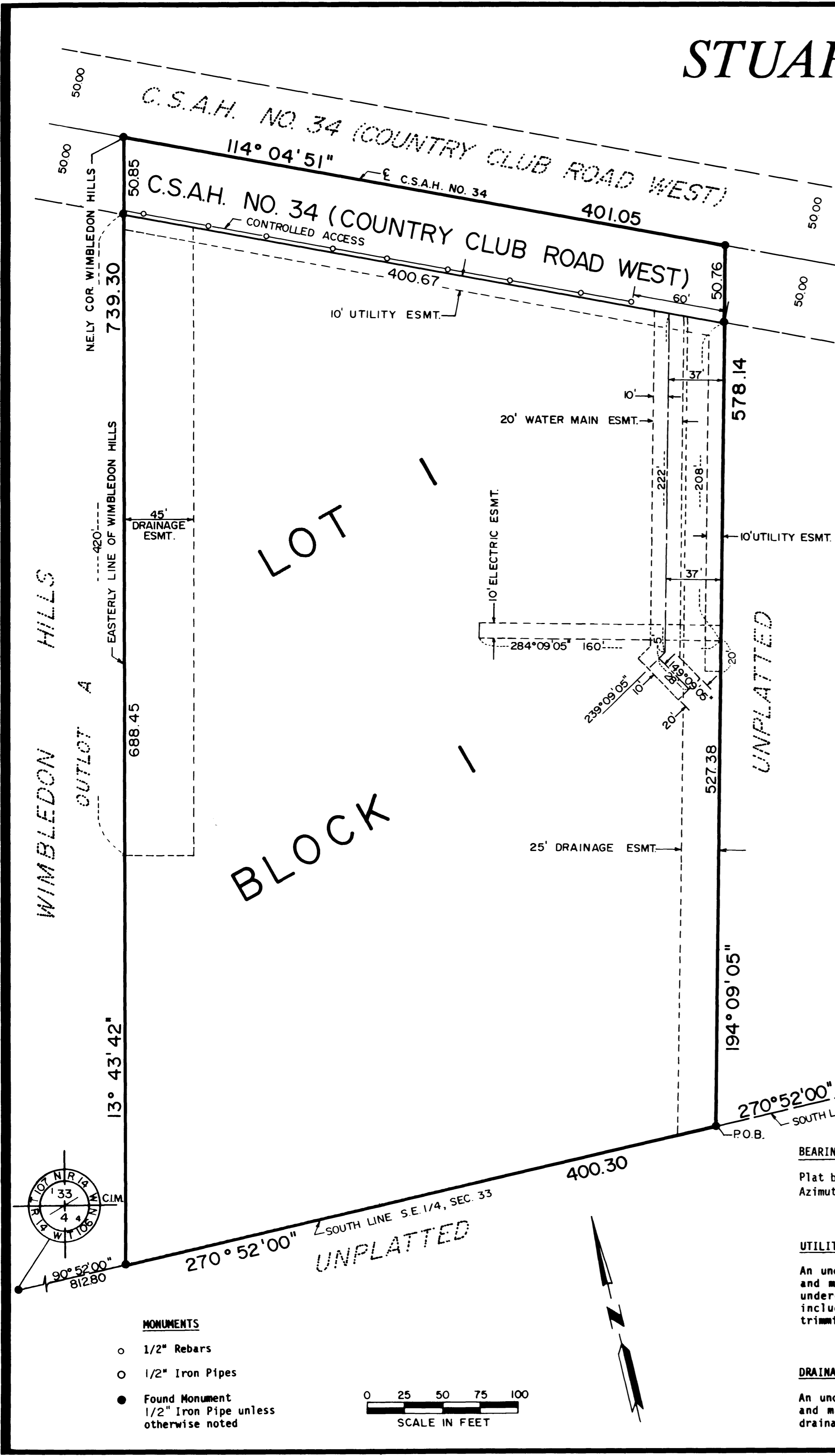


STUART SUBDIVISION



INSTRUMENT OF DEDICATION

Know all men by these presents: That Stuart H. Nolan, President, Stuart Corporation, a Minnesota Corporation, owners and proprietors of the following described property situated in the County of Olmsted, State of Minnesota, to wit:

That part of the South Half of the Southeast Quarter of Section 33, Township 107 North, Range 14 west, Olmsted County, Minnesota, described as follows:

Commencing at the southeast corner of said Southeast Quarter; thence westerly on a Minnesota State Plane Grid Azimuth from north of 270 degrees 52 minutes 00 seconds along the south line of said Southeast Quarter 1397.80 feet to the point of beginning; thence continuing westerly 270 degrees 52 minutes 00 seconds azimuth along said south line 400.30 feet to the easterly line of Wimbledon Hills according to the plat thereof on file in the County Recorder's Office, Olmsted County, Minnesota; thence northerly 13 degrees 43 minutes 42 seconds azimuth along said easterly line 739.30 feet to the center line of County State Aid Highway Number 34; thence easterly 114 degrees 04 minutes 51 seconds azimuth along said center line 401.05 feet; thence southerly 194 degrees 09 minutes 05 seconds azimuth 578.14 feet to the point of beginning.

Said tract contains 5.93 acres more or less.

Have caused the same to be surveyed and platted as STUART SUBDIVISION and do hereby donate and dedicate to the public for public use forever the thoroughfare and grant the easements as shown on this plat.

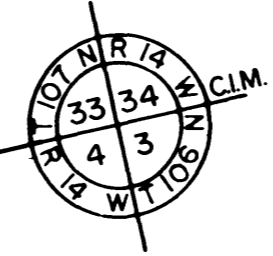
In witness whereof, said Stuart H. Nolan, President, Stuart Corporation has hereunto set his hand this 15 day of February, 1989.

Stuart H. Nolan
Stuart H. Nolan

STATE OF MINNESOTA
COUNTY OF *Rochester*

The foregoing instrument was acknowledge before me this 15th day of February, 1989 by Stuart H. Nolan, President, Stuart Corporation, a Minnesota Corporation, on behalf of the Corporation.

Abbe
Notary Public, *Rochester* County, MN
My Commission Expires 09.11.94



BEARINGS

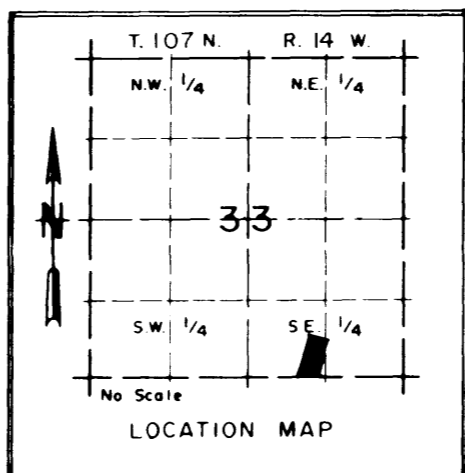
Plat bearings are Minnesota State Plane Grid Azimuths measured to the right from Grid North.

UTILITY EASEMENT DEFINED

An unobstructed easement for the construction and maintenance of all necessary overhead, underground or surface public utilities, including rights to conduct drainage and trimming on said easement.

DRAINAGE EASEMENT DEFINED

An unobstructed easement for the construction and maintenance of underground and surface drainage facilities and utility easement.



COUNTY TREASURER

Estimated Taxes due and payable for the year 1989 have been paid as of this 13th day of February, 1989.

Karen Cooken, Deputy
Olmsted County Treasurer

COUNTY AUDITOR

No delinquent taxes due and transfer entered this 3rd day of March, 1989.

Daniel G. Hammett, Deputy
Olmsted County Auditor

COUNTY RECORDER

Document Number *2269*

I hereby certify that this instrument was filed in the office of the County Recorder for record on this 3 day of March, 1989 at 9:12 o'clock A.M. and was duly recorded in Olmsted County Records.

Lucia Gustafson
Olmsted County Recorder

COUNTY SURVEYOR

I certify that this plat has been checked mathematically and that the plat conforms to the applicable platting laws.

This 13th day of February, 1989.

Edward Kuisle
Olmsted County Surveyor

STATE OF MINNESOTA
COUNTY OF OLMSTED
CITY OF ROCHESTER

I, Carole A. Grimm, City Clerk, in and for the City of Rochester, do hereby certify that on the 18 day of February, 1989, the accompanying plat was duly approved by the Common Council of the City of Rochester. In testimony whereof, I have hereunto signed my name and affixed the Seal of said City of Rochester this 2 day of March, 1989.

Carole A. Grimm
City Clerk

SURVEYOR'S CERTIFICATE

I do hereby certify that I have surveyed and platted the property described on this plat as STUART SUBDIVISION, that the plat is a correct representation of said survey, that all distances are correctly shown on said plat in feet and hundredths of a foot, that all monuments have been correctly placed in the ground as shown, that the outside boundary lines are correctly designated and that there are no wetlands or public highways to be designated on said plat other than as shown.

Donald R. Borcharding
Donald R. Borcharding
Minnesota R.L.S. #10162

STATE OF MINNESOTA
COUNTY OF OLMSTED

The foregoing Surveyor's Certificate was acknowledged before me this 10th day of February, 1989 by Donald R. Borcharding, Minnesota R.L.S. #10162.

William M. Maden
Notary Public, Olmsted County, MN
My Commission Expires 6-19-91

FINAL PLAT
STUART SUBDIVISION
ROCHESTER, MINNESOTA

PROJECT NUMBER	2269
DATE	12-21-88
DRAWN BY	M.S.R.
REVISIONS	
SHEET NUMBER	1
OF	1 SHEETS