

OFFICIAL PLAT

PARKWOOD HILLS FIFTH SUBDIVISION

Surveyor's Certificate

I hereby certify that I have surveyed and platted the property described on this plat as PARKWOOD HILLS FIFTH SUBDIVISION; that this plat is a correct representation of the survey; that all distances are correctly shown on the plat in feet and hundredths of a foot; that all monuments have been correctly placed in the ground as shown; that the outside boundary lines are correctly designated on the plat; and that there are no wetlands or public highways to be designated on said plat other than as shown thereon.

James E. Swanson, R.L.S. Minnesota Registration Number 11622

State of Minnesota County of Olmsted

The surveyor's certificate was subscribed and sworn to before me, a Notary Public, this 9th day of December, 1988.

William E. Tomter, Notary Public, Olmsted County, Minnesota

My commission expires [Notary Seal]

County Surveyor

I certify that this plat has been checked mathematically and that the plat conforms to the applicable platting laws, this 25th day of January, 1989.

Edward Kivale, Olmsted County Surveyor

Tax Statements

Taxes due and payable for the year 1989 have been paid.

Lathyn Weatherly Deputy, Olmsted County Treasurer

Date March 3, 1989

No delinquent taxes due and transfer entered this 3rd day of March, 1989.

Samuel J. Jamieson, Deputy, Olmsted County Auditor

City Approval

State of Minnesota County of Olmsted City of Rochester

I, Carole A. Grimm, City Clerk in and for the City of Rochester, do hereby certify that on the 18th day of December, 1988, the accompanying plat was duly approved by the Common Council of the City of Rochester. In testimony thereof I have hereunto signed my name and affixed the seal of said City of Rochester this 2nd day of March, 1989.

Carole A. Grimm, City Clerk

County Recorder

DOCUMENT NUMBER 500000

I hereby certify that this instrument was filed in the Office of the County Recorder for record on this 3rd day of March, 1989, at 9:20 o'clock a.m., and was duly recorded in the Olmsted County records.

By Lois Sunstein, County Recorder

Deputy

State of Minnesota County of Olmsted

The foregoing instrument was acknowledged before me this 15th day of December, 1988, by Wm. H. Sipple, Senior Vice-President, and Dorothy M. Burch, Assistant Secretary, officers of Midwest Federal Savings and Loan Association of Minneapolis, a United States Corporation, on behalf of the Corporation.

Ann McHolloway, Notary Public, Olmsted County, Minnesota

My commission expires 4-3-92

In witness whereof said TCF Banking and Savings, F.A., a United States Corporation, has caused these presents to be signed by its proper officer this 27th day of December, 1988.

Richard A. Kaphingst, Senior Vice-President

State of Minnesota County of Hennepin

The foregoing instrument was acknowledged before me this 27th day of December, 1988, by Richard A. Kaphingst, Senior Vice-President of TCF Banking and Savings, F.A., a United States Corporation, on behalf of the Corporation.

Charles E. Stalling, Notary Public, Hennepin County, Minnesota

My commission expires

In witness whereof said Lanoga Corporation, a Delaware Corporation, has caused these presents to be signed by its proper officer this 20th day of January, 1989.

Robert D. Drumm, President

State of Minnesota County of Winona

The foregoing instrument was acknowledged before me this 20th day of January, 1989, by Robert D. Drumm, President of Lanoga Corporation, a Delaware Corporation, on behalf of the Corporation.

Margaret L. Pittell, Notary Public, Winona County, Minnesota

My commission expires 5-8-91

Instrument of Dedication

KNOW ALL MEN BY THESE PRESENTS: That Harvey R. Ratzloff and Mary D. Ratzloff, husband and wife, owners and proprietors, and Midwest Federal Savings and Loan Association of Minneapolis, a United States Corporation, and TCF Banking and Savings, F.A., a United States Corporation, and Lanoga Corporation, a Delaware Corporation, mortgagees of the following described property situated in the City of Rochester, State of Minnesota, to wit:

A part of the Southwest Quarter of Section 30, Township 107 North, Range 13 West, Olmsted County, Minnesota, described as follows:

Commencing at the northwest corner of the Southwest Quarter of said Section 30; thence South 89 degrees 34 minutes 03 seconds East, assumed bearing, along the north line of said Southwest Quarter, 1626.97 feet; thence South 32 degrees 35 minutes 59 seconds West, 355.50 feet to the northwest corner of Lot 10, Block 2, PARKWOOD HILLS THIRD SUBDIVISION for a point of beginning; thence North 89 degrees 34 minutes 03 seconds West, parallel with the north line of said Southwest Quarter, 871.20 feet to the centerline of C.S.A.H. No. 2; thence South 32 degrees 35 minutes 59 seconds West along said centerline, 273.60 feet to the northwest corner of PARKWOOD HILLS SUBDIVISION; thence South 57 degrees 24 minutes 00 seconds East along the northerly line of said Subdivision, 244.80 feet; thence southeasterly 88.54 feet along the northerly line of both PARKWOOD HILLS SUBDIVISION and PARKWOOD HILLS FOURTH SUBDIVISION and along a tangential curve concave to the northeast, central angle of 19 degrees 00 minutes 00 seconds, radius of 267.00 feet, and the chord of said curve bears South 66 degrees 54 minutes 00 seconds East, 88.14 feet (the next three courses are along the northerly line of said PARKWOOD HILLS FOURTH SUBDIVISION); thence South 76 degrees 24 minutes 00 seconds East, tangent to the last described curve, 306.85 feet; thence tangent to said curve South 76 degrees 24 minutes 00 seconds East, 306.85 feet; thence southeasterly 214.57 feet along a tangential curve concave to the southwest, central angle of 18 degrees 00 minutes 00 seconds radius of 683.00 feet, and the chord of said curve bears South 67 degrees 24 minutes 00 seconds East, 213.69 feet; thence South 58 degrees 24 minutes 00 seconds East, tangent to said curve, 228.80 feet to the southwest corner of Lot 6, Block 2, in said PARKWOOD HILLS FOURTH SUBDIVISION; thence North 03 degrees 31 minutes 12 seconds East, along the west line of said Lot 6 and along the west line of PARKWOOD HILLS THIRD SUBDIVISION, 665.81 feet to the point of beginning.

Containing 9.96 acres more or less.

have caused the same to be surveyed and platted as PARKWOOD HILLS FIFTH SUBDIVISION and do hereby donate and dedicate to the public for the public use forever the thoroughfares and also dedicate the easements as shown on this plat for drainage and utility purposes only.

In witness whereof said Harvey R. Ratzloff and Mary D. Ratzloff, husband and wife, have caused these presents to be signed this 12th day of December, 1988.

Harvey R. Ratzloff, Mary D. Ratzloff

State of Minnesota County of Olmsted

The foregoing instrument was acknowledged before me this 12th day of December, 1988, by Harvey R. Ratzloff and Mary D. Ratzloff, husband and wife.

Notary Public, Olmsted County, Minnesota

My commission expires

In witness whereof said Midwest Federal Savings and Loan Association of Minneapolis, a United States Corporation, has caused these presents to be signed by its proper officers this 15th day of December, 1988.

Wm. H. Sipple, Senior Vice-President; Dorothy M. Burch, Assistant Secretary

PREPARED BY: McGHIE & BETTS, INC. CONSULTING ENGINEERS LAND SURVEYORS ROCHESTER, MINNESOTA

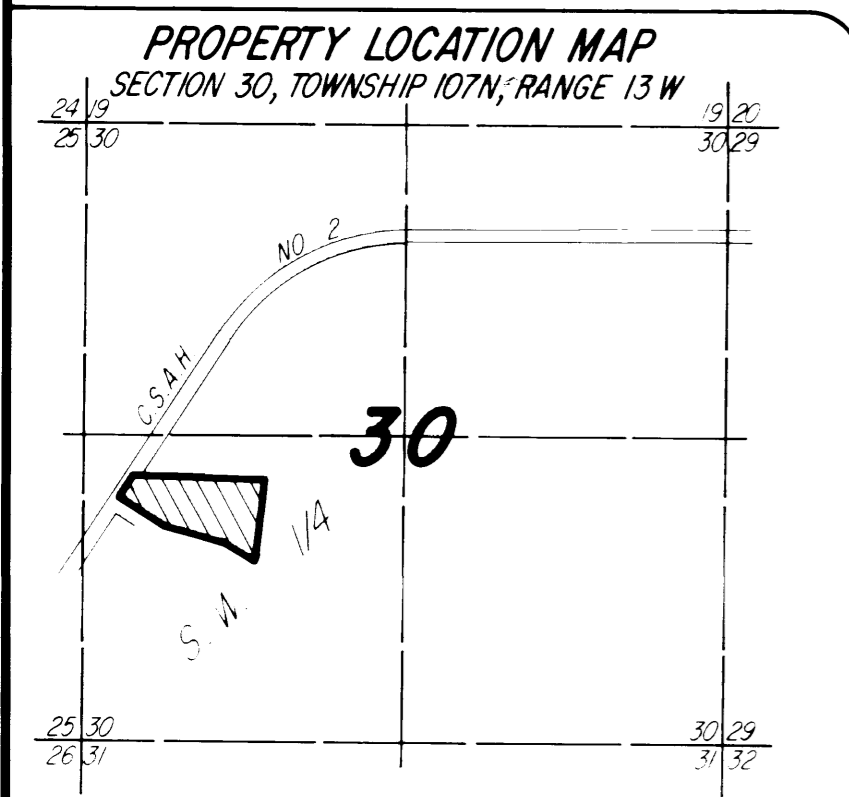
OFFICIAL PLAT

PARKWOOD HILLS FIFTH SUBDIVISION



SCALE IN FEET
0 10 20 50 100

NOTE:
ALL MONUMENTS SHOWN THUS: ●
ARE FOUND 5/8" I.D. CAPPED PIPES,
UNLESS OTHERWISE NOTED.
ALL MONUMENTS SHOWN THUS: ○
ARE 5/8" I.D. CAPPED PIPES SET
WITH REGISTRATION NO. 11622
BASIS OF BEARING SYSTEM:
ALL BEARINGS ARE IN RELATIONSHIP
WITH THE NORTH LINE S W 1/4 SEC. 30,
WHICH IS ASSUMED TO BE S89°34'03" E.



CONTROLLED ACCESS defined:
Ingress or egress to from, or across, the
abutting roadway County State Aid Highway
No. 2 is restricted by Olmsted County,
Minnesota, and said right of access is
hereby dedicated to said road authority.

UTILITY EASEMENT defined:
An unobstructed easement for the construction
and maintenance of all necessary underground
and surface public utilities including rights to
conduct drainage and trimming on said easement.

PREPARED BY:
McGHEE & BETTS, INC.
CONSULTING ENGINEERS
LAND SURVEYORS
ROCHESTER MINNESOTA