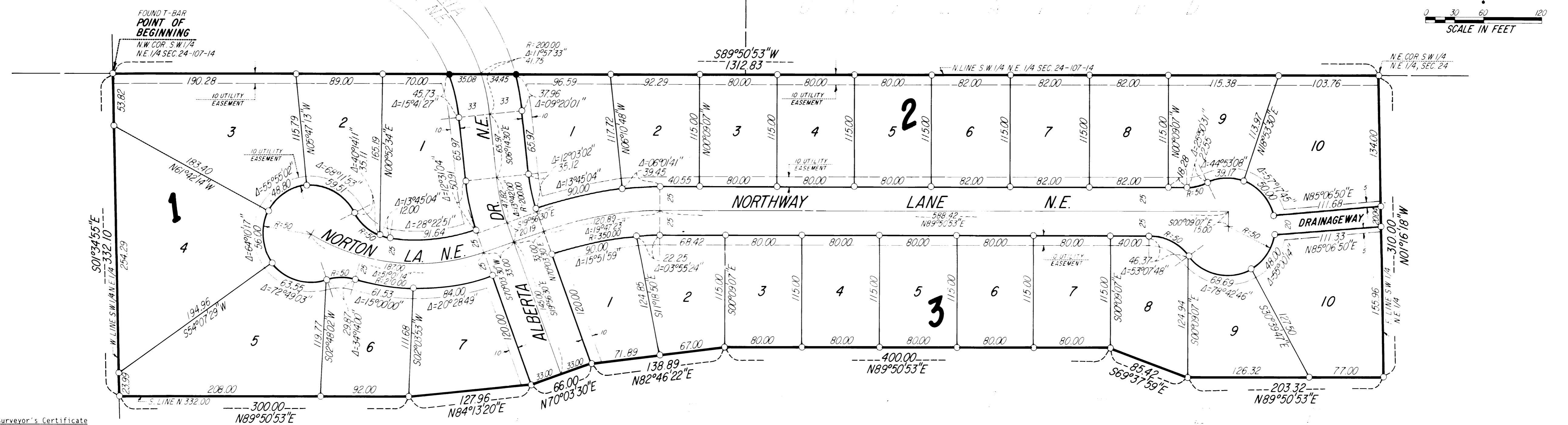
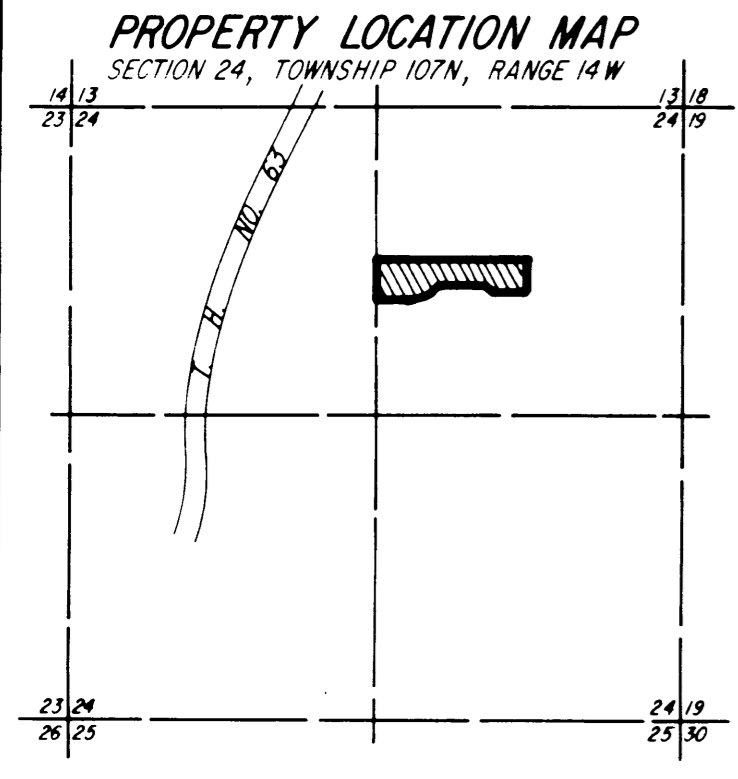


# OFFICIAL PLAT

## VIKING HILLS THIRD

NOTE:  
 ALL MONUMENTS SHOWN THUS: ○  
 ARE 5/8" I. D. CAPPED PIPES SET  
 WITH REGISTRATION NO. 11622.  
 ALL MONUMENTS SHOWN THUS: ●  
 ARE FOUND 5/8" PIPES, UNLESS  
 OTHERWISE NOTED.  
 BASIS OF BEARING SYSTEM:  
 ALL BEARINGS ARE IN RELATIONSHIP  
 WITH THE NORTH LINE S.W. 1/4 N.E.  
 1/4 SEC. 24, WHICH IS ASSUMED  
 TO BE S89°50'53" W

UTILITY EASEMENT defined:  
 An unobstructed easement for the construction and  
 maintenance of all necessary underground or sur-  
 face public utilities including rights to conduct  
 drainage and trimming on said easement.



Surveyor's Certificate  
 I hereby certify that I have surveyed and platted the property described on this plat as VIKING HILLS THIRD; that this plat is a correct representation of the survey; that all distances are correctly shown on the plat in feet and hundredths of a foot; that all monuments have been correctly placed in the ground as shown; that the outside boundary lines are correctly designated on the plat; and that there are no wetlands or public highways to be designated on said plat other than as shown thereon.

*James E. Swanson*  
 James E. Swanson, R.L.S.  
 Minnesota Registration Number 11622

State of Minnesota  
 County of Olmsted

The surveyor's certificate was subscribed and sworn to before me, a Notary Public, this 6<sup>th</sup> day of February, 1989.

*William E. Tomlin*  
 Notary Public, Olmsted County, Minnesota

My commission expires \_\_\_\_\_

County Surveyor

I certify that this plat has been checked mathematically and that the plat conforms to the applicable platting laws, this 8<sup>th</sup> day of February, 1989.

*Ed Kuisle*  
 Olmsted County Surveyor

County Recorder  
 DOCUMENT NUMBER 560043

I hereby certify that this instrument was filed in the Office of the County Recorder for record on this 22<sup>nd</sup> day of February, 1989, at 7:12 o'clock P.M. and was duly recorded in the Olmsted County records.

*Law Sinstrom*  
 County Recorder  
 Deputy

City Approval  
 State of Minnesota  
 County of Olmsted  
 City of Rochester

I, Carole A. Grimm, City Clerk in and for the City of Rochester, do hereby certify that on the 6<sup>th</sup> day of February, 1989, the accompanying plat was duly approved by the Common Council of the City of Rochester. In testimony thereof I have hereunto signed my name and affixed the seal of said City of Rochester this 21<sup>st</sup> day of February, 1989.

*Carole A. Grimm*  
 City Clerk

Tax Statements  
 Taxes due and payable for the year 1989 have been paid.

*Kathryn Weatherly* Deputy  
 Olmsted County Treasurer

Date February 22, 1989

No delinquent taxes due and transfer entered this 22<sup>nd</sup> day of February, 1989.

*John Walter* Deputy  
 Olmsted County Auditor

Instrument of Dedication  
 KNOW ALL MEN BY THESE PRESENTS: That Viking Hills, a partnership under the laws of the State of Minnesota, and Marquette Bank Rochester, a Minnesota Corporation, mortgagee, of the following described property situated in the City of Rochester, State of Minnesota, to wit:

That part of the north 332.10 feet of the Southwest Quarter of the Northeast Quarter of Section 24, Township 107 North, Range 14 West, Olmsted County, Minnesota, described as follows:

Beginning at the northwest corner of the Southwest Quarter of the Northeast Quarter of said Section 24; thence South 01 degrees 34 minutes 55 seconds East, assumed bearing, along the west line thereof, 332.10 feet to the south line of the north 332.00 feet of said Quarter-Quarter Section; thence North 89 degrees 50 minutes 53 seconds East, along said south line, 300.00 feet; thence North 84 degrees 13 minutes 20 seconds East, 127.96 feet; thence North 70 degrees 03 minutes 30 seconds East, 66.00 feet; thence North 82 degrees 46 minutes 22 seconds East, 138.89 feet; thence North 89 degrees 50 minutes 53 seconds East, 400.00 feet; thence South 69 degrees 37 minutes 59 seconds East, 85.42 feet; thence North 89 degrees 50 minutes 53 seconds East, 203.32 feet to the east line of said Quarter-Quarter Section; thence North 01 degrees 16 minutes 18 seconds West, along said east line, 310.00 feet to the north line of said Quarter-Quarter Section; thence South 89 degrees 50 minutes 53 seconds West, along said north line 1312.83 feet to the point of beginning.

Containing 9.16 acres more or less.

have caused the same to be surveyed and platted as VIKING HILLS THIRD and do hereby donate and dedicate to the public for the public use forever the thoroughfare, cul-de-sacs, and drainage-way, and also dedicate the easements as shown on this plat for drainage and utility purposes only.

In witness whereof said Viking Hills, a partnership under the laws of the State of Minnesota, has caused these presents to be signed by its proper officer this 8<sup>th</sup> day of February, 1989.

*R.L. Hexum, Jr.*  
 R.L. Hexum, Jr., Partner

State of Minnesota  
 County of Olmsted

On this 8<sup>th</sup> day of February, 1989, before me, a Notary Public within and for said County and State, personally appeared R.L. Hexum, Jr., to me known to be a partner in Viking Hills, the partnership named in the foregoing instrument, on behalf of said partnership.

*William E. Tomlin*  
 Notary Public, Olmsted County, Minnesota

My commission expires \_\_\_\_\_

In witness whereof said Marquette Bank Rochester, a Minnesota Corporation, has caused these presents to be signed by its proper officer this 9<sup>th</sup> day of February, 1989.

*David A. Naumann*  
 David A. Naumann  
 Senior Vice-President

*Charlie Brown*  
 Charlie Brown  
 Assistant Vice-President

State of Minnesota  
 County of Olmsted

The foregoing instrument was acknowledged before me this 9<sup>th</sup> day of February, 1989, by David A. Naumann, Senior Vice-President, and Charlie Brown, Assistant Vice-President, officers of Marquette Bank Rochester on behalf of the Corporation.

*William E. Tomlin*  
 Notary Public, Olmsted County, Minnesota

My commission expires \_\_\_\_\_

PREPARED BY:  
 MCGHEE & BETTS, INC.  
 CONSULTING ENGINEERS  
 PLANNERS  
 LAND SURVEYORS  
 ROCHESTER, MINNESOTA