

OFFICIAL PLAT

LIBERTY MANOR TOWNHOMES SECOND SUBDIVISION

Surveyor's Certificate

I hereby certify that I have surveyed and platted the property described on this plat as LIBERTY MANOR TOWNHOMES SECOND SUBDIVISION; that this plat is a correct representation of the survey; that all distances are correctly shown on the plat in feet and hundredths of a foot; that all monuments have been correctly placed in the ground as shown; that the outside boundary lines are correctly designated on the plat; and that there are no wetlands or public highways to be designated on said plat.

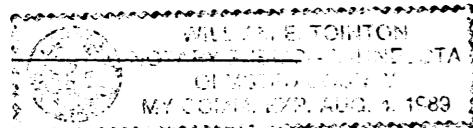
James E. Swanson
James E. Swanson, R.L.S.
Minnesota Registration Number 11622

State of Minnesota
County of Olmsted

The surveyor's certificate was subscribed and sworn to before me, a Notary Public, this 18th day of December, 1987.

William E. Tomlinson
Notary Public, Olmsted County, Minnesota

My commission expires



County Surveyor

I certify that this plat has been checked mathematically and that the plat conforms to the applicable platting laws, this 22nd day of December, 1987.

Edward Kuisle
Olmsted County Surveyor

Tax Statements

Taxes due and payable for the year 1987 have been paid.

Charlene Van Duit
Olmsted County Treasurer

Date December 21, 1987

No delinquent taxes due and transfer entered this 14th day of Nov, 1988.

James M. Weston, Deputy
County Auditor

City Approval

State of Minnesota
County of Olmsted
City of Rochester

I, Carole A. Grimm, City Clerk in and for the City of Rochester, do hereby certify that on the 31 day of December, 1987, the accompanying plat was duly approved by the Common Council of the City of Rochester. In testimony thereof I have hereunto signed my name and affixed the seal of said City of Rochester this 31 day of December, 1987.

Carole A. Grimm
City Clerk

County Recorder

DOCUMENT NUMBER 555752

I hereby certify that this instrument was filed in the Office of the County Recorder for record on this 14 day of December, 1988, at O'clock 11/4 AM., and was duly recorded in the Olmsted County records.

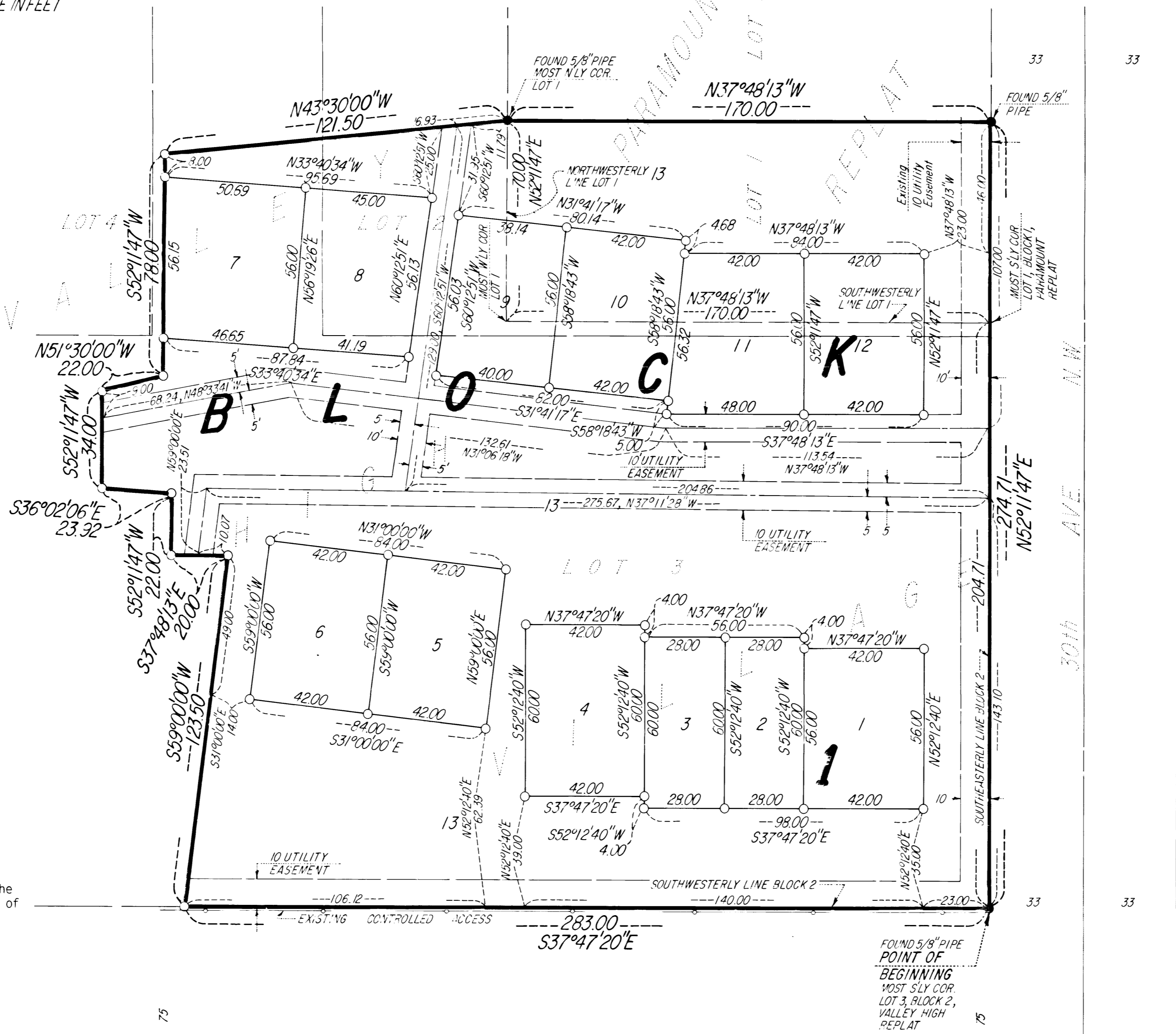
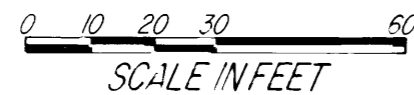
By LOIS FINSTUEN
County Recorder

Carole M. Ferris
Deputy

NOTE:
ALL MONUMENTS SHOWN THIS: ○
ARE 5/8" I.D. CAPPED PIPES SET
WITH REGISTRATION NO 11622.
BASIS OF BEARING SYSTEM:
ALL BEARINGS ARE IN RELATIONSHIP
WITH THE SOUTHEASTERLY LINE
BLOCK 2, VALLEY HIGH VILLAGE,
WHICH IS ASSUMED TO BE N52°11'47"E.

UTILITY EASEMENT defined:
An unobstructed easement for the construction and
maintenance of all necessary underground or surface
public utilities including rights to conduct drain-
age and trimming on said easement.

CONTROLLED ACCESS defined:
Ingress or egress to, from, or across the abutting
roadway is restricted by the road authority pursu-
ant to Minnesota State Statute 160.08.



Instrument of Dedication

KNOW ALL MEN BY THESE PRESENTS: That Paramount Development, Inc., a Minnesota Corporation, owner and proprietor of the following described property situated in the City of Rochester, State of Minnesota, to wit:

Lot 1, Block 1, PARAMOUNT REPLAT, Rochester, Minnesota.

Also:

That part of Lots 2 and 3, Block 2, VALLEY HIGH VILLAGE, Rochester, Minnesota, being described as follows:

Beginning at the most southerly corner of said Lot 3, Block 2; thence North 52 degrees 11 minutes 47 seconds East, assumed bearing, along the southeasterly line of said Block 2, a distance of 204.71 feet to the most southerly corner of Lot 1, Block 1, PARAMOUNT REPLAT; thence North 37 degrees 48 minutes 13 seconds West, along the southwesterly line of said Lot 1, a distance of 170.00 feet to the most westerly corner of said Lot 1; thence North 52 degrees 11 minutes 47 seconds East, along the northwesterly line of said Lot 1, a distance of 70.00 feet; to the most northerly corner of said Lot 1; thence North 43 degrees 30 minutes 00 seconds West, 121.50 feet; thence South 52 degrees 11 minutes 47 seconds West, 78.00 feet; thence North 51 degrees 30 minutes 00 seconds West, 22.00 feet; thence South 52 degrees 11 minutes 47 seconds West, 34.00 feet; thence South 36 degrees 02 minutes 06 seconds East, 23.92 feet; thence South 52 degrees 11 minutes 47 seconds West, 22.00 feet; thence South 37 degrees 48 minutes 13 seconds East, 20.00 feet; thence South 59 degrees 00 minutes 00 seconds West, 123.50 feet to the southwesterly line of Lot 3, Block 2, in said VALLEY HIGH VILLAGE; thence South 37 degrees 47 minutes 20 seconds East, along said southwesterly line, 283.00 feet to the point of beginning.

Containing 1.79 acres more or less.

have caused the same to be surveyed and platted as LIBERTY MANOR TOWNHOMES SECOND SUBDIVISION and do hereby donate and dedicate to the public for the public use forever the easements as shown on this plat for drainage and utility purposes only.

In witness whereof said Paramount Development, Inc., a Minnesota Corporation, has caused these presents to be signed by its proper officer this 18 day of DECEMBER, 1987.

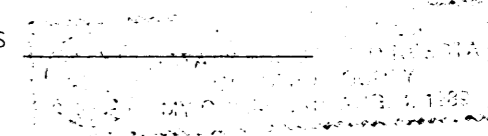
Jeffrey M. Thisius
Jeffrey M. Thisius
President

State of Minnesota
County of Olmsted

The foregoing instrument was acknowledged before me this 18th day of December, 1987, by Jeffrey M. Thisius, President of Paramount Development, Inc., on behalf of the Corporation.

William E. Tomlinson
Notary Public, Olmsted County, Minnesota

My commission expires



G. S. A. H. NO. 4

PREPARED BY:
McGHEE & BETTS, INC.
CONSULTING ENGINEERS
LAND SURVEYORS
ROCHESTER, MINNESOTA