

OFFICIAL PLAT

BROADWAY NORTH

I hereby certify that I have surveyed and platted the property described on this plat as BROADWAY NORTH; that this is a correct representation of the survey; that all distances are correctly shown on the plat in feet and hundredths of a foot; that all monuments have been correctly placed in the ground as shown; that the outside boundary lines are correctly designated on the plat; and that there are no wet lands or public highways to be designated on said plat other than as shown thereon.

James E. Swanson
James E. Swanson, R.L.S.
Minnesota Registration Number 11622

State of Minnesota
County of Olmsted

The surveyor's certificate was subscribed and sworn to before me, a Notary Public, this 29th day of July, 1988.

William C. Ferris
Notary Public, Olmsted County

My commission expires:
WILLIAM C. FERRIS
NOTARY PUBLIC - MINNESOTA
OLMSTED COUNTY
MY COMM. EXP. AUG. 4, 1989

County Surveyor

I certify that this plat has been checked mathematically and that the plat conforms to the applicable platting laws, this 28th day of July, 1988.

Edward Huiskle
Olmsted County Surveyor

State of Minnesota
County of Olmsted

I do hereby certify that the accompanying plat was duly approved by the Olmsted County Board of Commissioners at a meeting held on the 20th day of September, 1988. In testimony whereof I have signed my name and affixed the seal of said County this 20th day of September, 1988.

Daniel G. Hameister, Deputy
Olmsted County Auditor

Planning Commission

We, the members of the Olmsted County Planning Advisory Commission, do hereby certify that we have examined the plat as shown and find that it conforms to the provisions of the Subdivision Ordinance of Olmsted County.

James M. Conzall
Commission Chairman

Township Board

The Township Board of Supervisors of Cascade Township, Olmsted County, do hereby certify that we have approved the accompanying plat. In testimony thereof, we have signed our names this 12th day of September, 1988.

Board Chairman

Joseph L. Vroman
Town Clerk

County Engineer

Approved this 4th day of August, 1988, by Olmsted County Engineer.

Michael Sheehan
Michael Sheehan, County Engineer

Tax Statement

No delinquent taxes due and transfer entered this 20th day of September, 1988.

Daniel G. Hameister, Deputy
County Auditor

Taxes due and payable for the year 1988 have been paid.

Kathryn Weatherly, Deputy
Olmsted County Treasurer

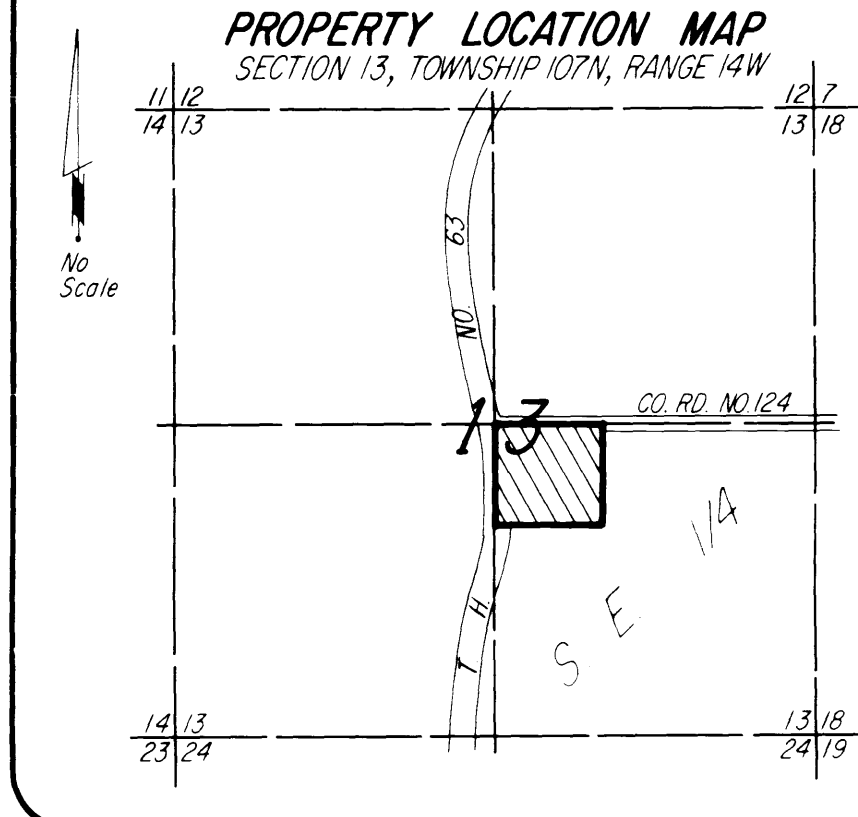
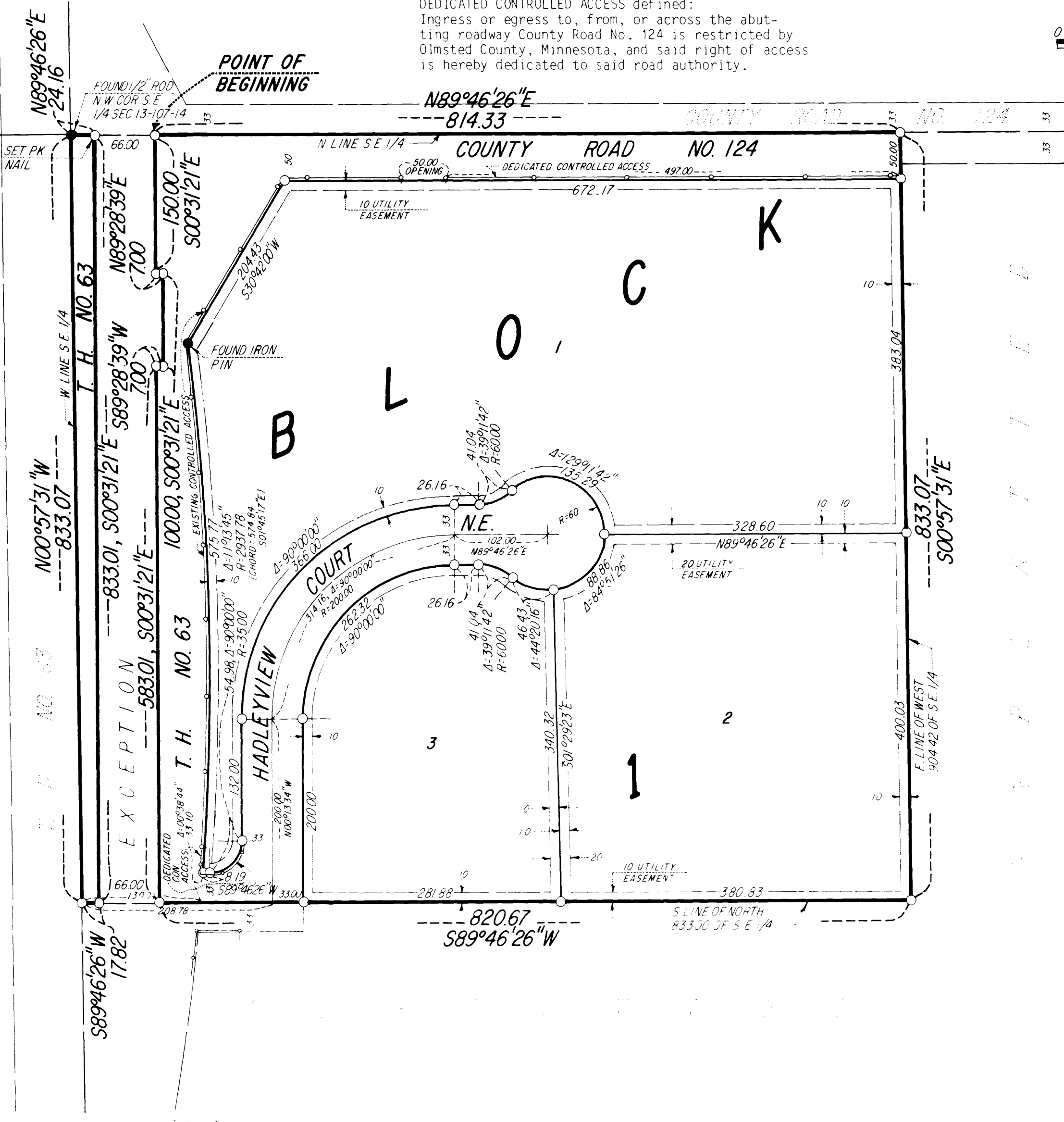
UTILITY EASEMENT defined:
An unobstructed easement for the construction and maintenance of all necessary underground or surface public utilities including rights to conduct drainage and trimming on said easement.

EXISTING CONTROLLED ACCESS defined:
Ingress or egress to, from, or across the abutting roadway County Road No. 124 is restricted by the road authority pursuant to Minnesota State Statute 160.08.

DEDICATED CONTROLLED ACCESS defined:
Ingress or egress to, from, or across the abutting roadway County Road No. 124 is restricted by Olmsted County, Minnesota, and said right of access is hereby dedicated to said road authority.

NOTE:
ALL MONUMENTS SHOWN THUS: O
ARE 5/8" I.D. CAPPED PIPES SET
WITH REGISTRATION NO. 11622,
UNLESS OTHERWISE NOTED.
BASIS OF BEARING SYSTEM:
ALL BEARINGS ARE IN RELATIONSHIP
WITH THE NORTH LINE S.E. 1/4 SEC. 13,
WHICH IS ASSUMED TO BE N89°46'26"E

SCALE IN FEET



Instrument of Dedication

KNOW ALL MEN BY THESE PRESENTS: That Fullerton Properties, Inc., a Minnesota Corporation, owner and proprietor of the following described property situated in the County of Olmsted, State of Minnesota, to wit:

The West 904.42 feet of the North 833.00 feet of the Southeast Quarter of Section 13, Township 107 North, Range 14 West, Olmsted County, Minnesota, except that part described as follows:

Commencing at the northwest corner of said Southeast Quarter; thence North 89 degrees 46 minutes 26 seconds East, assumed bearing, along the north line of said Southeast Quarter, 24.16 feet for a point of beginning; thence continue North 89 degrees 46 minutes 26 seconds East along said north line, 66.00 feet; thence South 00 degrees 31 minutes 21 seconds East, 150.00 feet; thence North 89 degrees 28 minutes 39 seconds East, 7.00 feet; thence South 00 degrees 31 minutes 21 seconds East, 100.00 feet; thence South 89 degrees 28 minutes 39 seconds West, 7.00 feet; thence South 00 degrees 31 minutes 21 seconds East, 583.01 feet to the south line of the north 833.00 feet of said Southeast Quarter; thence South 89 degrees 46 minutes 26 seconds West along said south line, 66.00 feet; thence North 00 degrees 31 minutes 21 seconds West, 833.01 feet to the point of beginning.

Containing 16.02 acres more or less.

have caused the same to be surveyed and platted as BROADWAY NORTH and do hereby donate and dedicate to the public for the public use forever the thoroughfares and cul-de-sac and also dedicate the easements as shown on this plat for drainage and utility purposes only, and dedicate to Olmsted County the controlled access as shown on this plat.

In witness whereof said Fullerton Properties, Inc., a Minnesota Corporation, has caused these presents to be signed by its proper officers, and its corporate seal to be hereunto affixed this 22nd day of July, 1988.

Joseph W. Franks, Vice-President
Kathleen R. Anderson, Assistant Secretary

State of Minnesota
County of Hennepin

The foregoing instrument was acknowledged before me this 22nd day of July, 1988, by Joseph W. Franks, Vice-President, and Kathleen R. Anderson, Assistant Secretary, officers of Fullerton Properties, Inc., on behalf of the Corporation.

Lanthe Ballard
Notary Public, Hennepin County, Minnesota

My commission expires

DOCUMENT NUMBER
I hereby certify that this instrument was filed in the Office of the County Recorder for record on this 20th day of September, 1988, at 11:40 o'clock A.M., and was duly recorded in the Olmsted County records.

By
County Recorder
Carol M. Ferris, deputy

County Board of Health
The Olmsted County Board of Health has approved this plat for water supply and sewage disposal system.
Richard Peter
Supervisor, Division of Environmental Health, Olmsted County Health Department

PREPARED BY:
McGHEE & BETTS, INC.
CONSULTING ENGINEERS
LAND SURVEYORS
ROCHESTER, MINNESOTA