

OFFICIAL PLAT

DIAMOND RIDGE

Surveyor's Certificate

I hereby certify that I have surveyed and platted the property described on this plat as DIAMOND RIDGE; that this plat is a correct representation of the survey; that all distances are correctly shown on the plat in feet and hundredths of a foot; that all monuments have been correctly placed in the ground as shown; that the outside boundary lines are correctly designated on the plat; and that there are no wetlands or public highways to be designated on said plat other than as shown thereon.

James E. Swanson
James E. Swanson, R.L.S.
Minnesota Registration Number 11622

State of Minnesota
County of Olmsted

The surveyor's certificate was subscribed and sworn to before me, a Notary Public, this 7th day of June, 1988.

William E. Trinton
Notary Public, Olmsted County, Minnesota

My commission expires

County Surveyor

I certify that this plat has been checked mathematically and that the plat conforms to the applicable platting laws this 7th day of June, 1988.

Edward Kniel
Olmsted County Surveyor

Tax Statements

Taxes due and payable for the year 1988 have been paid.

Norm Coker Deputy
Olmsted County Treasurer

Date June 27, 1988

No delinquent taxes due and transfer entered this 5th day of July, 1988.

Samuel J. Darnitzer, Deputy
County Auditor

City Approval

State of Minnesota
County of Olmsted
City of Rochester

I, Carole A. Grimm, City Clerk in and for the City of Rochester, do hereby certify that on the 6 day of June, 1988, the accompanying plat was duly approved by the Common Council of the City of Rochester. In testimony thereof I have hereunto signed my name and affixed the seal of said City of Rochester this 24 day of June, 1988.

Carole A. Grimm
City Clerk

County Recorder

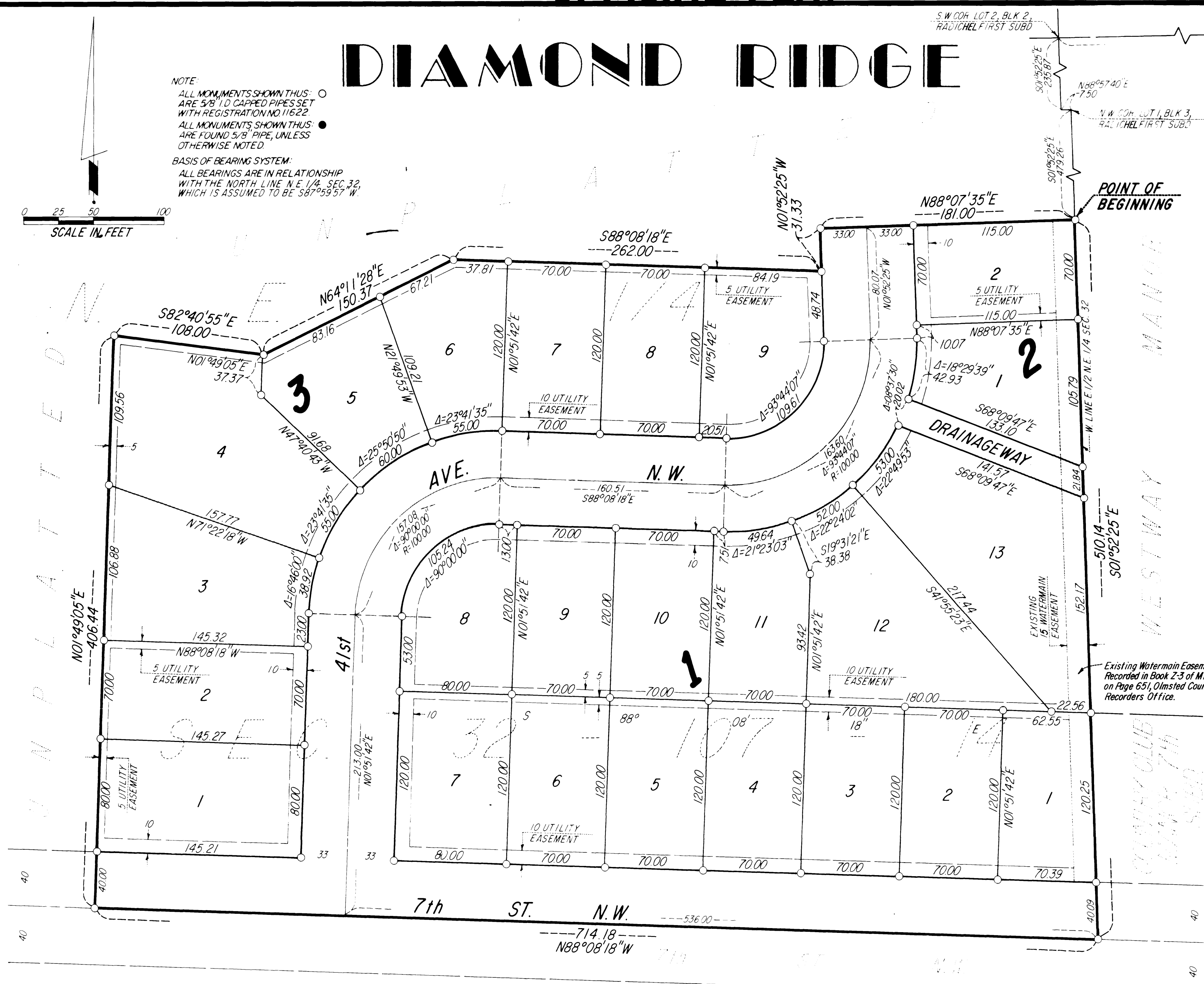
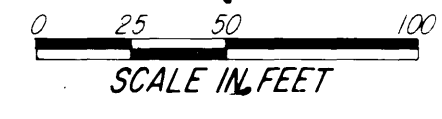
DOCUMENT NUMBER

I hereby certify that this instrument was filed in the Office of the County Recorder for record on this 7 day of July, 1988, at O'clock 9 A.M., and was duly recorded in the Olmsted County records.

By LOIS FINSTUEN
County Recorder

Carole M. Ferris
Deputy

NOTE:
ALL MONUMENTS SHOWN THUS: ○ ARE 5/8" I.D. CAPPED PIPES SET WITH REGISTRATION NO. 11622
ALL MONUMENTS SHOWN THUS: ● ARE FOUND 5/8" PIPE, UNLESS OTHERWISE NOTED
BASIS OF BEARING SYSTEM:
ALL BEARINGS ARE IN RELATIONSHIP WITH THE NORTH LINE N.E. 1/4 SEC. 32, WHICH IS ASSUMED TO BE S87°59'57" W.



Instrument of Dedication

KNOW ALL MEN BY THESE PRESENTS: That Western Walls, Inc., a Minnesota Corporation, owner and proprietor of the following described property situated in the City of Rochester, State of Minnesota, to wit:

That part of the Northeast Quarter of Section 32, Township 107 North, Range 14 West, Olmsted County, Minnesota, described as follows:

Commencing at the northeast corner of the Northeast Quarter of said Section 32; thence South 87 degrees 59 minutes 57 seconds West, assumed bearing, along the north line of said Northeast Quarter, 1309.33 feet to the southwest corner of Lot 2, Block 2, RADICHEL FIRST SUBDIVISION; thence South 01 degrees 52 minutes 25 seconds East along the west line of the East Half of the Northeast Quarter of said Section 32 a distance of 479.26 feet for the point of beginning; thence continue South 01 degrees 52 minutes 25 seconds East along said west line, 510.14 feet to the centerline of Seventh Street N.W., as dedicated on the plat of COUNTRY CLUB MANOR SECOND SUBDIVISION; thence North 88 degrees 08 minutes 18 seconds West along the westerly prolongation of said centerline, 714.18 feet; thence North 01 degrees 49 minutes 05 seconds East, 406.44 feet; thence South 82 degrees 40 minutes 55 seconds East, 108.00 feet; thence North 64 degrees 11 minutes 28 seconds East, 150.37 feet; thence South 88 degrees 08 minutes 18 seconds East, 262.00 feet; thence North 01 degrees 52 minutes 25 seconds West, 31.33 feet; thence North 88 degrees 07 minutes 35 seconds East, 181.00 feet to the point of beginning.

Containing 7.37 acres more or less.

have caused the same to be surveyed and platted as DIAMOND RIDGE and do hereby donate and dedicate to the public for the public use forever the thoroughfares and also dedicate the easements as shown on this plat for drainage and utility purposes only.

In witness whereof said Western Walls, Inc., a Minnesota Corporation, has caused these presents to be signed by its proper officer this 13th day of June, 1988.

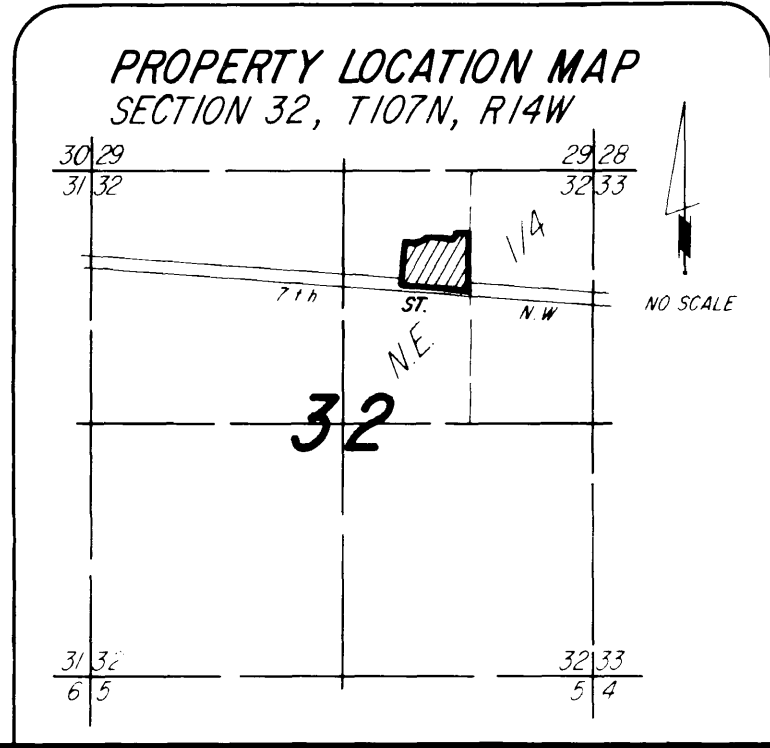
Robert D. DeWitz
Robert D. DeWitz, President

State of Minnesota
County of Olmsted

The foregoing instrument was acknowledged before me this 13th day of June, 1988, by Robert D. DeWitz, President of Western Walls, Inc., a Minnesota Corporation, on behalf of the Corporation.

William E. Trinton
Notary Public, Olmsted County, Minnesota

My commission expires



UTILITY EASEMENT defined:
An unobstructed easement for the construction and maintenance of all necessary underground or surface public utilities including rights to conduct drainage and trimming on said easement.

PREPARED BY:
MCGHIE & BETTS, INC.
CONSULTING ENGINEERS
LAND SURVEYORS
ROCHESTER, MINNESOTA

DIAMOND RIDGE