

OFFICIAL PLAT

RIVERVIEW WEST SECOND REPLAT

Surveyor's Certificate

I hereby certify that I have surveyed and platted the property described on this plat as RIVERVIEW WEST SECOND REPLAT; that this plat is a correct representation of the survey; that all distances are correctly shown on the plat in feet and hundredths of a foot; that all monuments have been correctly placed in the ground as shown; that the outside boundary lines are correctly designated on the plat; and that there are no wetlands or public highways to be designated on said plat.

James E. Swanson
James E. Swanson, R.L.S.
Minnesota Registration Number 11622

State of Minnesota
County of Olmsted

The surveyor's certificate was subscribed and sworn to before me, a Notary Public, this 16th day of May, 1988.

William E. Toussaint
Notary Public, Olmsted County, Minnesota

My commission expires 

I certify that this plat has been checked mathematically and that the plat conforms to the applicable platting laws this 17th day of May, 1988.

Edward Kusile
Olmsted County Surveyor

Tax Statements

Taxes due and payable for the year 1988 have been paid.

Kathryn Weatherly Deputy
Olmsted County Treasurer

Date June 30, 1988

No delinquent taxes due and transfer entered this 5th day of July, 1988.

Janice J. Vanneister, Deputy
County Auditor

County Recorder

DOCUMENT NUMBER

I hereby certify that this instrument was filed in the Office of the County Recorder for record on this 5th day of July, 1988, at 11 o'clock AM, and was duly recorded in the Olmsted County records.

By LOIS FINSTUEN

County Recorder
Carole Ann Ferrier
Deputy

Instrument of Dedication

KNOW ALL MEN BY THESE PRESENTS: That RiverView West, Inc., a Minnesota Corporation, owner and proprietor of the following described property situated in the City of Rochester, State of Minnesota, to wit:

Lot 36, Block 1, RIVERVIEW WEST FIRST REPLAT, Rochester, Minnesota.

have caused the same to be surveyed and platted as RIVERVIEW WEST SECOND REPLAT and do hereby donate and dedicate to the public for the public use forever the easements as shown on this plat for drainage and utility purposes only.

In witness whereof said RiverView West, Inc., a Minnesota Corporation, has caused these presents to be signed by its proper officers this 19th day of May, 1988.

Tom Bouquet - Pres John Bouquet
Tom Bouquet, President John Bouquet, Secretary-Treasurer

State of Minnesota
County of Olmsted

The foregoing instrument was acknowledged before me this 19th day of May, 1988, by Tom Bouquet, President, and John Bouquet, Secretary-Treasurer, officers of RiverView West, Inc., on behalf of the Corporation.

Wabasha County
Notary Public, Wabasha County, Minnesota

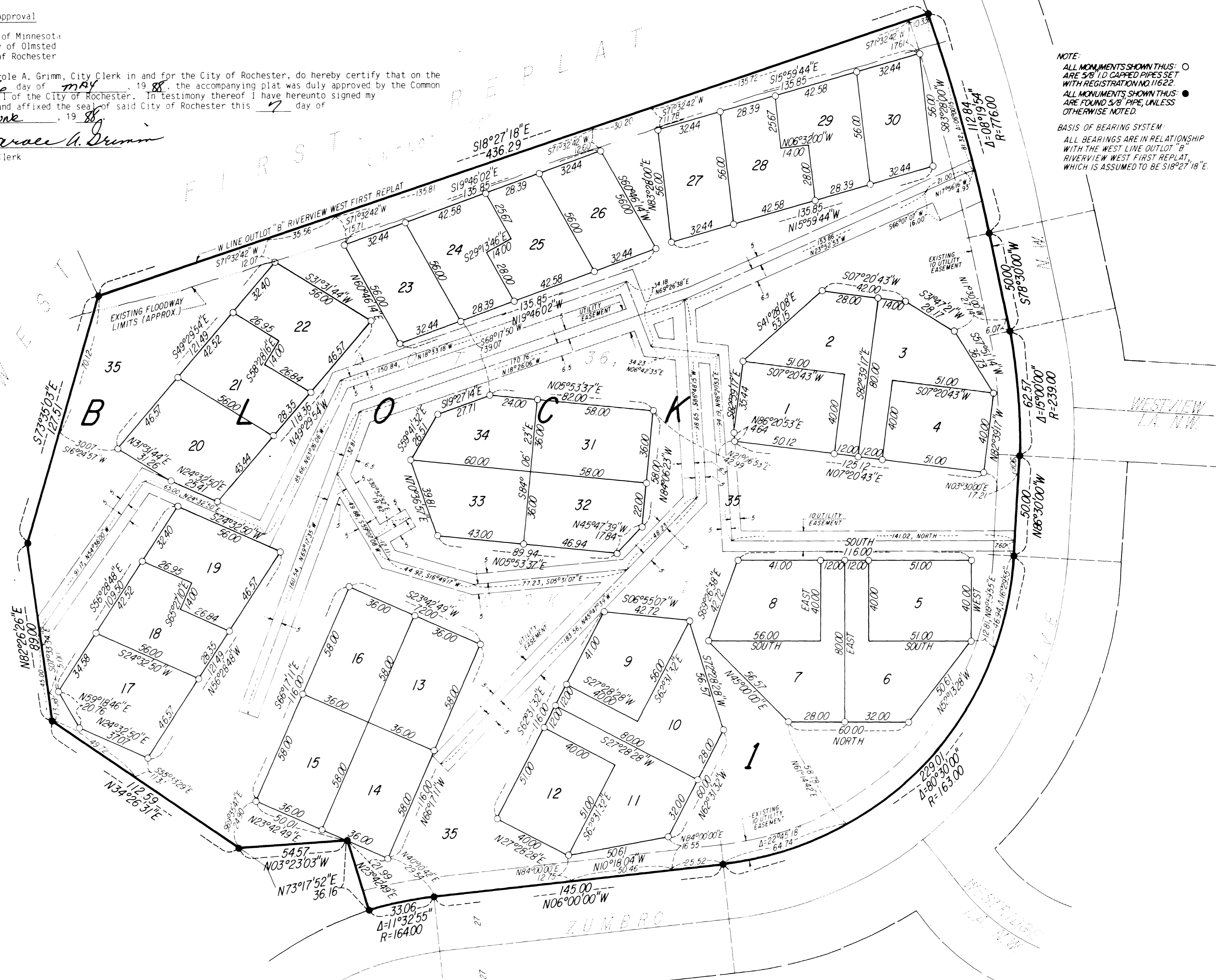
My commission expires 11-91

City Approval

State of Minnesota
County of Olmsted
City of Rochester

I, Carole A. Grimm, City Clerk in and for the City of Rochester, do hereby certify that on the 16 day of May, 1988, the accompanying plat was duly approved by the Common Council of the City of Rochester. In testimony thereof I have hereunto signed my name and affixed the seal of said City of Rochester this 7 day of June, 1988.

Carole A. Grimm
City Clerk



NOTE:
ALL MONUMENTS SHOWN THIS: ○ ARE 5/8" I.D. CAPPED PIPES SET WITH REGISTRATION NO. 11622.
ALL MONUMENTS SHOWN THIS: ● ARE FOUND 5/8" PIPE, UNLESS OTHERWISE NOTED.
BASIS OF BEARING SYSTEM:
ALL BEARINGS ARE IN RELATIONSHIP WITH THE WEST LINE OUTLOT "B" RIVERVIEW WEST FIRST REPLAT, WHICH IS ASSUMED TO BE S18°27'18" E.

UTILITY EASEMENT defined:
An unobstructed easement for the construction and maintenance of all necessary underground or surface public utilities including lines to conduct drainage and trimming on said easement.

PREPARED BY:
McGHEE & BETTS, INC.
CONSULTING ENGINEERS
LAND SURVEYORS
ROCHESTER, MINNESOTA