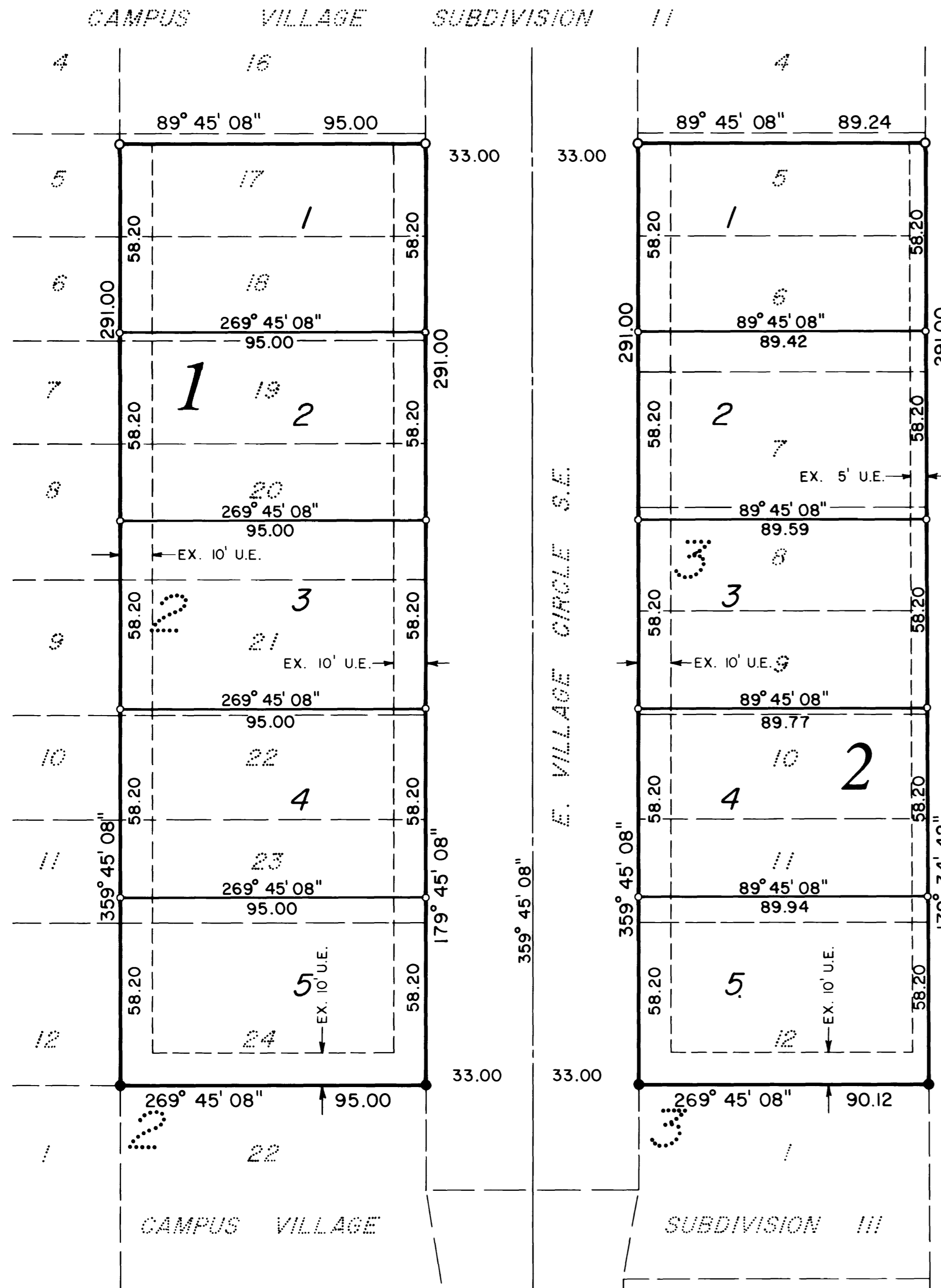
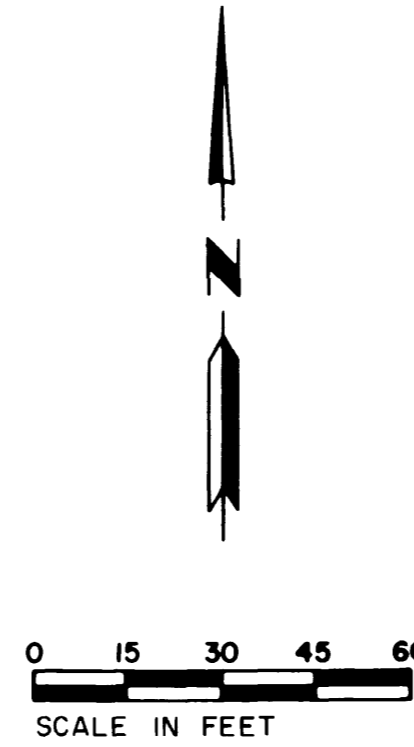


CAMPUS VILLAGE SUBDIVISION IV



REPLAT OF LOT 1, BLOCK 1, CAMPUSTOWN SUBDIVISION



INSTRUMENT OF DEDICATION

KNOW ALL MEN BY THESE PRESENTS: That FineShelter Development Group, Inc., a Minnesota Corporation, being Owners and Proprietors of the following described property, situated in the County of Olmsted, State of Minnesota, to wit:

Lots 17, 18, 19, 20, 21, 22, 23 and 24, Block 2, and Lots 5, 6, 7, 8, 9, 10, 11 and 12, Block 3, CAMPUS VILLAGE SUBDIVISION II, according to the plat thereof on file at the County Recorder's Office, Olmsted County, Minnesota, except the north 3.00 feet of said Lots 5 and 17, and except the south 32.50 feet of said Lot 24.

Have caused the same to be surveyed and platted and replatted as CAMPUS VILLAGE SUBDIVISION IV and do hereby grant the easements as shown on the plat.

IN WITNESS WHEREOF said FineShelter Development Group, Inc., a Minnesota Corporation, has caused his presents to be signed by its proper Officers this 21st day of April, 19 88.

Richard L. Hexum, Jr.
Richard L. Hexum, Jr., President

STATE OF MINNESOTA
COUNTY OF OLMSTED

The foregoing instrument was acknowledged before me this 20th day of April, 19 88 by Richard L. Hexum of FineShelter Development Group, Inc., a Minnesota Corporation, on behalf of the Corporation.

Harvey M. Mallon
Notary Public, Olmsted County, Minnesota
My Commission Expires 6-17-91

COUNTY SURVEYOR

I certify that this plat has been checked mathematically and that the plat conforms to the applicable platting laws.

This 21st day of April, 19 88.
Edward Kivale
Olmsted County Surveyor

COUNTY TREASURER

Taxes due and payable for the year 19 88 have been paid as of this 19th day of May, 19 88.

Charlene VanDort Deputy
Olmsted County Treasurer

COUNTY AUDITOR

No delinquent taxes due and transfer entered this 31st day of May, 19 88.

Pamela J. Wameister, Deputy
Olmsted County Auditor

COUNTY RECORDER

Document Number _____

I hereby certify that this instrument was filed in the office of the County Recorder for record on this 31st day of May, 19 88 at 9 o'clock A.M. and was duly recorded in Olmsted County Records.

Lisa Tomstuen
Olmsted County Recorder
By *Nancy Johnson, Deputy*

CITY APPROVAL

STATE OF MINNESOTA
COUNTY OF OLMSTED
CITY OF ROCHESTER

JUDY KAY SCHERR, DEPUTY
I, Carole A. Grimm, City Clerk, in and for the City of Rochester, do hereby certify that on the 4th day of APRIL, 19 88, the accompanying plat was duly approved by the Common Council of the City of Rochester. In testimony whereof, I have hereunto signed my name and affixed the Seal of said City of Rochester this 21th day of MAY, 19 88.

Judy Kay Scherr, Deputy
City Clerk

SURVEYOR'S CERTIFICATE

I do hereby certify that I have surveyed, platted, and replatted the property described on this plat as CAMPUS VILLAGE SUBDIVISION IV, that this plat is a correct representation of said survey, that all distances are correctly shown on said plat in feet and hundredths of a foot, that all monuments have been correctly placed in the ground as shown, that the outside boundary lines are correctly designated and that there are no wetlands or public highways to be designated on said plat other than as shown.

Donald R. Borcharding
Donald R. Borcharding
Minnesota R.L.S. No. 10162

STATE OF MINNESOTA
COUNTY OF OLMSTED

The foregoing Surveyor's Certificate was acknowledged before me this 3rd day of April, 19 88 by Donald R. Borcharding, R.L.S. No. 10162.

Harvey M. Mallon
Notary Public, Olmsted County, Minnesota
My Commission Expires 6-17-91

- MONUMENTS**
- 1/2" Rebars
 - 3/4" Iron Pipes
 - Found Monuments (Pipe, Rod, Etc.)
 - No Monuments Found or Set
- All monuments set have a plastic cap stamped R.L.S. 10162.

- BEARINGS**
- Plat bearings are Minnesota State Plane Grid Azimuths measured to the right from Grid North.
- UTILITY EASEMENT DEFINED**
- An unobstructed easement for the construction and maintenance of all necessary overhead, underground or surface public utilities, including rights to conduct drainage and trimming on said easement.

FINAL PLAT
CAMPUS VILLAGE SUBDIVISION IV
ROCHESTER, MN

PROJECT NUMBER	2074
DATE	3-15-88
DRAWN BY	J. Goodman
REVISIONS	
SHEET NUMBER	