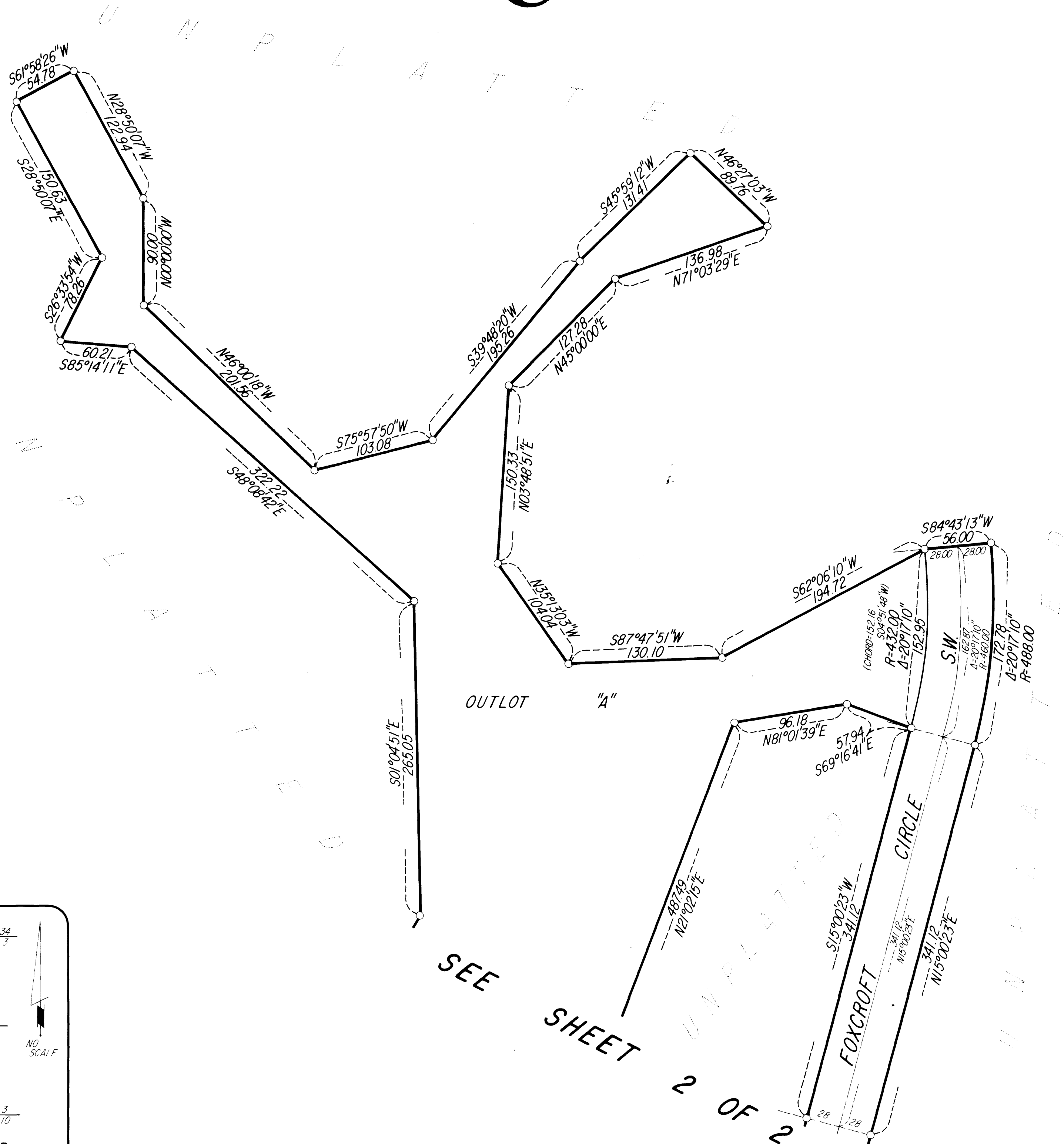
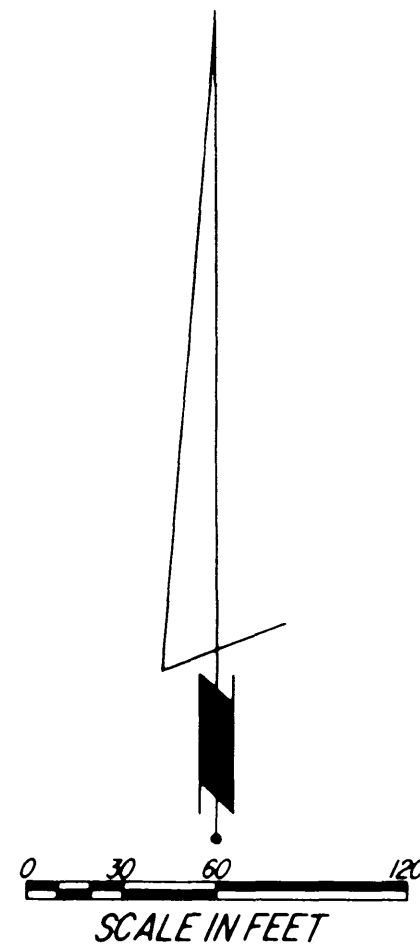


FOXCROFT FOURTH



Instrument of Dedication

KNOW ALL MEN BY THESE PRESENTS: That Foxcroft Corporation, a Minnesota Corporation, owner and proprietor of the following described property situated in the City of Rochester, State of Minnesota, to wit:

A part of the West Half of the Southeast Quarter of Section 4, Township 106 North, Range 14 West, Rochester, Minnesota described as follows:

Commencing at the southwest corner of said Southeast Quarter of Section 4; thence South 89 degrees 27 minutes 24 seconds East, assumed bearing, along the south line of said Southeast Quarter, 99.76 feet to the easterly right-of-way line of C.S.A.H. No. 122; thence North 01 degrees 10 minutes 41 seconds West along said right-of-way line, 208.56 feet; thence northerly 241.65 feet along said right-of-way line and along a tangential curve concave westerly, central angle of 06 degrees 53 minutes 19 seconds, and radius of 2009.86 feet to the point of beginning (said point being on the northerly right-of-way line of Fox Valley Drive S.W., and the next 8 courses are along said right-of-way line); thence South 89 degrees 27 minutes 24 seconds East, 266.30 feet; thence easterly 126.25 feet along a tangential curve concave northerly, central angle of 39 degrees 31 minutes 42 seconds, and radius of 183.00 feet; thence North 51 degrees 00 minutes 54 seconds East, 205.65 feet; thence easterly 165.58 feet along a tangential curve concave southerly, central angle of 39 degrees 31 minutes 42 seconds, and radius of 240.00 feet; thence South 89 degrees 27 minutes 24 seconds East, 76.63 feet; thence easterly 126.58 feet along a tangential curve concave northerly, central angle of 27 degrees 53 minutes 37 seconds, and radius of 260.00 feet; thence North 62 degrees 38 minutes 59 seconds East, 145.95 feet; thence easterly 10.00 feet along a tangential curve concave southerly, central angle of 01 degrees 41 minutes 07 seconds, and radius of 340.00 feet; thence northwesterly 68.16 feet along a nontangential curve concave southwesterly, central angle of 71 degrees 00 minutes 00 seconds, radius of 55.00 feet, and the chord of said curve bears North 57 degrees 58 minutes 00 seconds West, 63.88 feet; thence South 86 degrees 32 minutes 00 seconds West, 60.00 feet; thence northwesterly 106.90 feet along a tangential curve concave northerly, central angle of 49 degrees 00 minutes 00 seconds and radius of 125.00 feet; thence South 45 degrees 32 minutes 00 seconds West, 42.00 feet; thence North 89 degrees 27 minutes 24 seconds West, 178.00 feet; thence North 19 degrees 19 minutes 17 seconds East, 35.14 feet; thence North 65 degrees 32 minutes 49 seconds West, 135.00 feet; thence northerly 113.39 feet along a nontangential curve, concave northwesterly, central angle of 06 degrees 37 minutes 40 seconds, radius of 980.23 feet, and the chord of said curve bears North 18 degrees 19 minutes 13 seconds East, 113.32 feet; thence North 15 degrees 00 minutes 23 seconds East, 341.12 feet; thence northerly 172.78 feet along a tangential curve, concave westerly, central angle of 20 degrees 17 minutes 10 seconds, and radius of 488.00 feet; thence South 84 degrees 43 minutes 13 seconds West, 56.00 feet; thence southerly 152.95 feet along a nontangential curve concave westerly, central angle of 20 degrees 17 minutes 10 seconds, radius of 432.00 feet, and the chord of said curve bears South 04 degrees 51 minutes 48 seconds West, 152.16 feet; thence South 15 degrees 00 minutes 23 seconds West, 341.12 feet; thence southerly 152.38 feet along a tangential curve, concave westerly, central angle of 09 degrees 26 minutes 48 seconds, and radius of 924.23 feet; thence South 24 degrees 27 minutes 11 seconds West, 62.33 feet; thence South 90 degrees 00 minutes 00 seconds West, 163.68 feet; thence North 03 degrees 34 minutes 35 seconds East, 80.16 feet; thence North 21 degrees 02 minutes 15 seconds East, 487.49 feet; thence North 81 degrees 01 minutes 39 seconds East, 96.18 feet; thence South 69 degrees 16 minutes 41 seconds East, 57.94 feet; thence northerly 152.95 feet along a nontangential curve, concave westerly, central angle of 20 degrees 17 minutes 10 seconds, radius of 432.00 feet, and the chord of said curve bears North 04 degrees 51 minutes 48 seconds East, 152.16 feet; thence South 62 degrees 06 minutes 10 seconds West, 194.72 feet; thence South 87 degrees 47 minutes 51 seconds West, 130.10 feet; thence North 35 degrees 13 minutes 03 seconds West, 104.04 feet; thence North 03 degrees 48 minutes 51 seconds East, 150.33 feet; thence North 45 degrees 00 minutes 00 seconds East, 127.28 feet; thence North 71 degrees 03 minutes 29 seconds East, 136.98 feet; thence North 46 degrees 27 minutes 03 seconds West, 89.76 feet; thence South 45 degrees 59 minutes 12 seconds West, 131.41 feet; thence South 39 degrees 48 minutes 20 seconds West, 195.26 feet; thence South 75 degrees 57 minutes 50 seconds West, 103.08 feet; thence North 46 degrees 00 minutes 18 seconds West, 201.56 feet; thence North 00 degrees 00 minutes 00 seconds West, 90.00 feet; thence North 28 degrees 50 minutes 07 seconds West, 122.94 feet; thence South 61 degrees 58 minutes 26 seconds West, 54.78 feet; thence South 28 degrees 50 minutes 07 seconds East, 150.63 feet; thence South 26 degrees 33 minutes 54 seconds West, 78.26 feet; thence South 85 degrees 14 minutes 11 seconds East, 60.21 feet; thence South 48 degrees 08 minutes 42 seconds East, 322.22 feet; thence South 01 degrees 04 minutes 51 seconds East, 265.05 feet; thence South 30 degrees 57 minutes 50 seconds West, 204.08 feet; thence South 79 degrees 19 minutes 54 seconds West, 210.35 feet to the easterly right-of-way line of C.S.A.H. No. 122; thence southerly along said right-of-way line and along a nontangential curve, concave westerly, central angle of 15 degrees 51 minutes 00 seconds, radius of 2009.86 feet, and the chord of said curve bears South 15 degrees 59 minutes 30 seconds East, 554.22 feet to the point of beginning.

Containing 12.41 acres more or less.

has caused the same to be surveyed and platted as FOXCROFT FOURTH and do hereby donate and dedicate to the public for the public use forever the thoroughfares and also dedicate the easements as shown on this plat for drainage and utility purposes only.

In witness whereof said Foxcroft Corporation has caused these presents to be signed by its proper officer this 16th day of MAY, 1988.

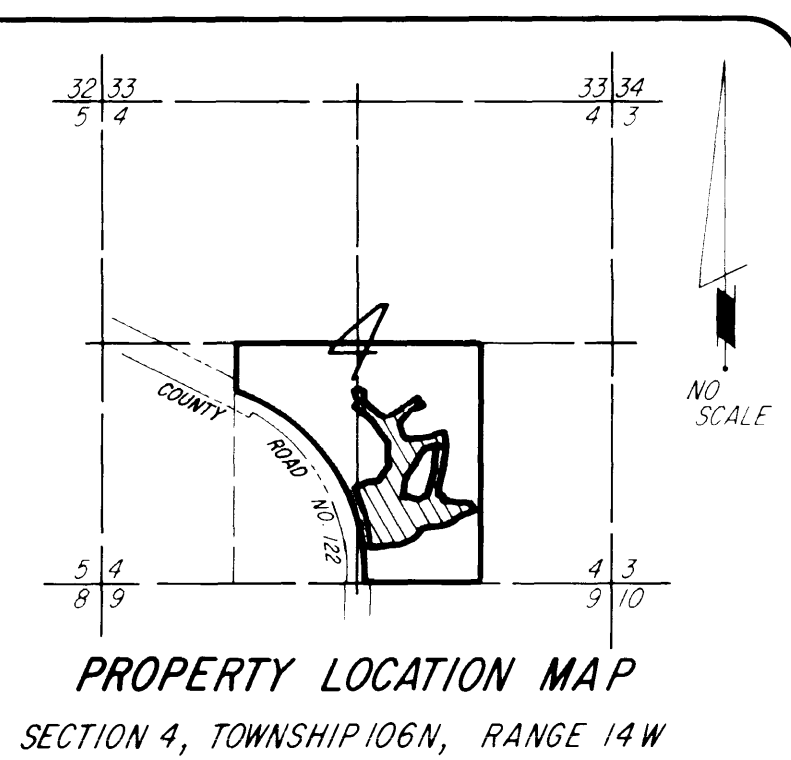
John A. Klopp, Jr.
John A. Klopp, Jr., President

State of Minnesota
County of Olmsted

The foregoing instrument was acknowledged before me this 16th day of MAY, 1988, by John A. Klopp, Jr., President of Foxcroft Corporation, on behalf of the Corporation.

William B. Tauter
Notary Public, Olmsted County, Minnesota

My commission expires



PROPERTY LOCATION MAP

SECTION 4, TOWNSHIP 106N, RANGE 14W

SEE SHEET 2 OF 2

PREPARED BY:
McGHEE & BETTS, INC
CONSULTING ENGINEERS
LAND SURVEYORS
ROCHESTER, MINNESOTA

FOXCROFT FOURTH

CONTROLLED ACCESS DEFINED:

Ingress or egress to, from, or across the abutting roadway County Road No. 122 is restricted by Olmsted County, Minnesota, and said right of access is hereby dedicated to said road authority.

UTILITY EASEMENT defined:

An unobstructed easement for the construction and maintenance of all necessary underground or surface public utilities including rights to conduct drainage and trimming on said easement.

NOTE

ALL MONUMENTS SHOWN THUS ○ ARE 5/8" I.D. CAPPED PIPES SET WITH REGISTRATION NO 11622
ALL MONUMENTS SHOWN THUS ● ARE 5/8" FOUND PIPES

BASIS OF BEARING SYSTEM:
ALL BEARINGS ARE IN RELATIONSHIP WITH THE SOUTH LINE S E 1/4 SEC 4, WHICH IS ASSUMED TO BE S89°27'24" E



Surveyor's Certificate

I hereby certify that I have surveyed and platted the property described on this plat as FOXCROFT FOURTH; that this plat is a correct representation of the survey; that all distances are correctly shown on the plat in feet and hundredths of a foot; that all monuments have been correctly placed in the ground as shown; that the outside boundary lines are correctly designated on the plat; and that there are no wetlands or public highways to be designated on said plat other than as shown thereon.

James E. Swanson
James E. Swanson, R.L.S.
Minnesota Registration Number 11622

State of Minnesota
County of Olmsted

The surveyor's certificate was subscribed and sworn to before me, a Notary Public, this 11th day of MAY, 1988.

William E. Truitt
Notary Public, Olmsted County, Minnesota

My commission expires: _____

County Surveyor

I certify that this plat has been checked mathematically and that the plat conforms to the applicable platting laws, this 12th day of MAY, 1988

Edward Quisale
Olmsted County Surveyor

County Recorder

DOCUMENT NUMBER _____

I hereby certify that this instrument was filed in the office of the County Recorder for record on this 8 day of June, 1988, at 3 1/2 o'clock P.M., and was duly recorded in the Olmsted County records.

By *Saw Jensen*
County Recorder

Deputy _____

Tax Statement

Taxes due and payable for the year 1988 have been paid.

John Cooker Deputy
Olmsted County Treasurer

Date June 8, 1988

No delinquent taxes due and transfer entered this 7th day of June, 1988.

Janice M. Hammett, Deputy
County Auditor

PREPARED BY:
McGHEE & BETTS, INC.
CONSULTING ENGINEERS
LAND SURVEYORS
ROCHESTER, MINNESOTA

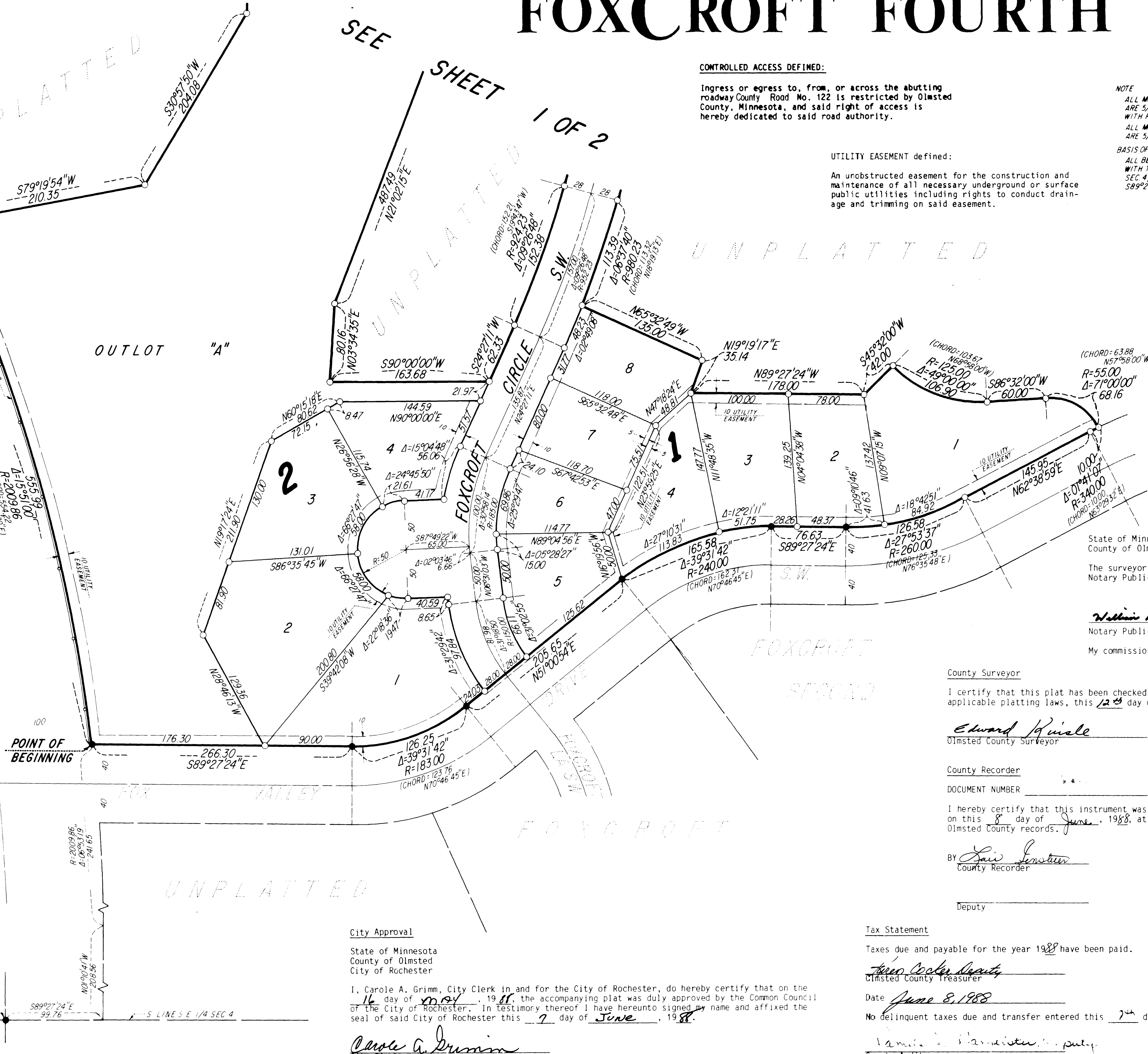
City Approval

State of Minnesota
County of Olmsted
City of Rochester

I, Carole A. Grimm, City Clerk in and for the City of Rochester, do hereby certify that on the 16 day of May, 1988, the accompanying plat was duly approved by the Common Council of the City of Rochester. In testimony thereof I have hereunto signed my name and affixed the seal of said City of Rochester this 7 day of June, 1988.

Carole A. Grimm
City Clerk

FOUND C.I.M.
SW COR S E 1/4
SEC 4-106-14



UNPLATTED

SEE SHEET 1 OF 2

UNPLATTED

FOX CROFT SECOND

FOX CROFT

UNPLATTED