

WALNUT HILLS SUBDIVISION

DRAINAGE EASEMENT DEFINED (D.E.)

An unobstructed easement for the construction and maintenance of underground and surface drainage facilities and utility easement.

UTILITY EASEMENT DEFINED (U.E.)

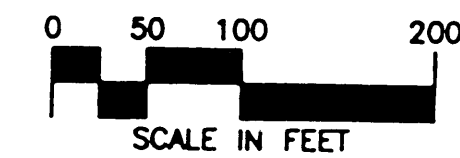
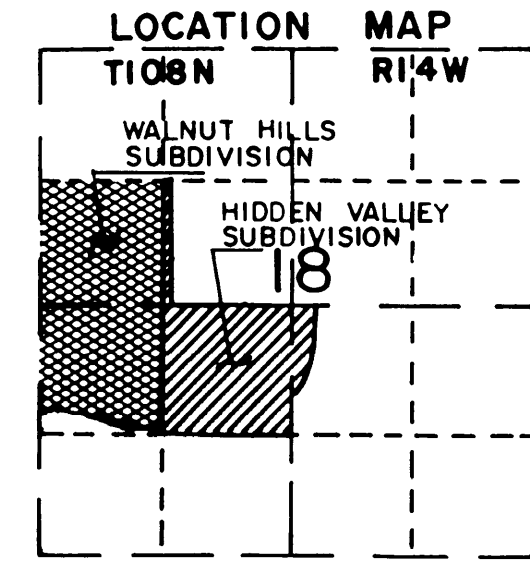
An unobstructed easement for the construction and maintenance of all necessary overhead, underground, or surface public utilities, including rights to conduct drainage and trimming on said easement.

CONTROLLED ACCESS DEFINED

Ingress and egress to, from, or across the abutting roadway is restricted by the road authority, pursuant to Minnesota State Statute 160.08.

BEARINGS

Plat bearings are Minnesota State Plane Grid Azimuths measured to the right from Grid North.



MONUMENTS

- 1/2" Rebars
- 3/4" Iron Pipes
- Found Monuments (Pipe, Rod, Etc.)
- No Monuments Found or Set

All monuments set have a plastic cap stamped R.L.S. 20703.

Found monuments are 3/4" Iron Pipe unless otherwise noted.

B.M. Elev. = 1027.18

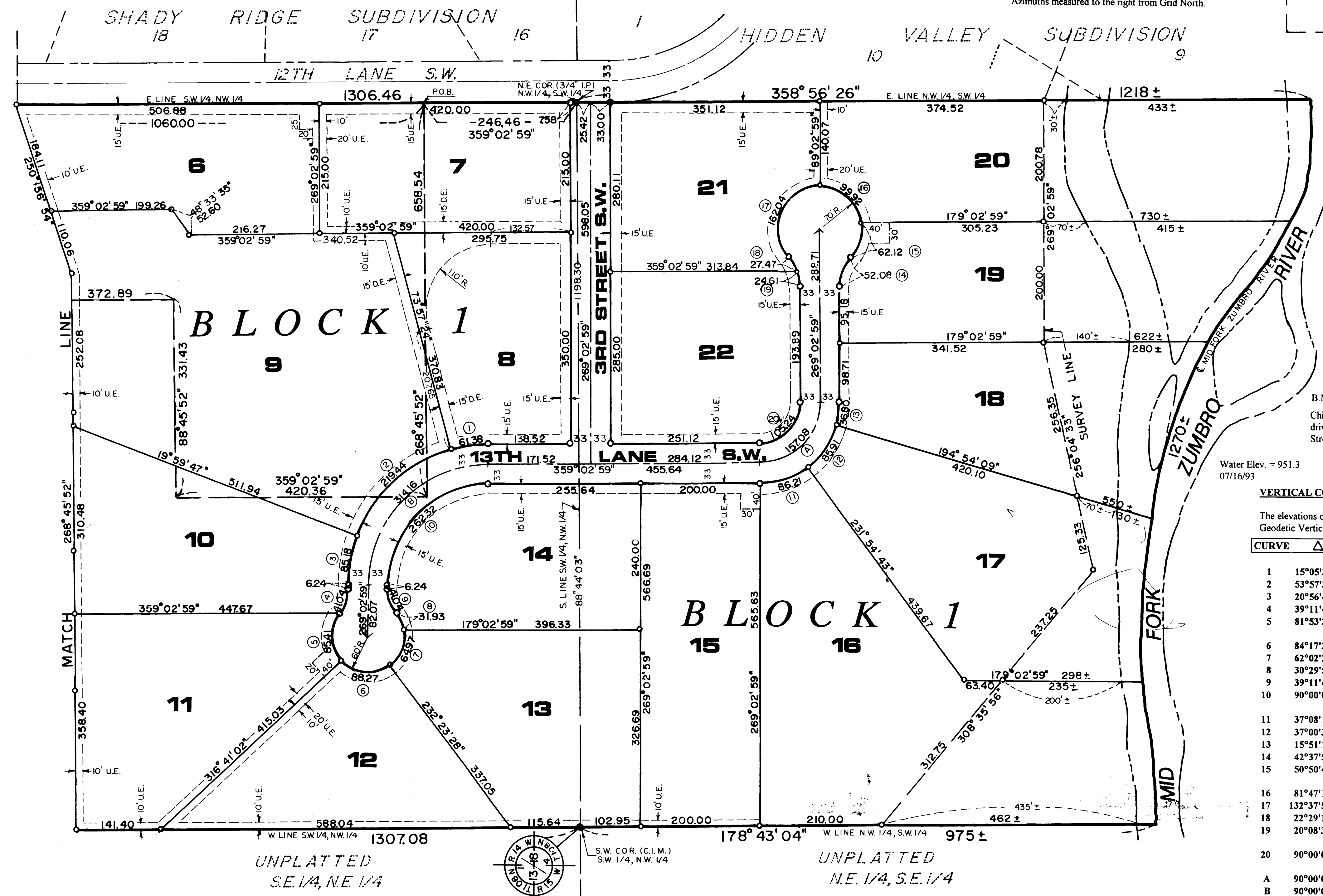
Chiseled square on west end CMP under driveway to Lake Shady Kennels on Center Street W., 0.6 mile west of T.H. 52.

Water Elev. = 951.3
07/16/93

VERTICAL CONTROL

The elevations on this plan are based on the National Geodetic Vertical Datum of 1929

CURVE	Δ	R	L	CHORD
1	15°05'35"	233.00	61.38	61.20
2	53°57'36"	233.00	219.44	211.42
3	20°56'49"	233.00	85.18	84.71
4	39°11'41"	60.00	41.04	40.25
5	81°53'38"	60.00	85.41	78.38
6	84°17'34"	60.00	88.27	80.52
7	62°02'21"	60.00	64.97	61.84
8	30°29'50"	60.00	31.93	31.56
9	39°11'41"	60.00	41.04	40.25
10	90°00'00"	167.00	262.32	236.17
11	37°08'16"	133.00	86.21	84.71
12	37°00'34"	133.00	85.91	84.42
13	15°51'10"	133.00	36.80	36.68
14	42°37'56"	70.00	52.08	50.89
15	50°50'43"	70.00	62.12	60.10
16	81°47'12"	70.00	99.92	91.65
17	132°37'56"	70.00	162.04	128.21
18	22°29'17"	70.00	27.47	27.30
19	20°08'39"	70.00	24.61	24.48
20	90°00'00"	67.00	105.24	94.75
A	90°00'00"	100.00	157.08	141.42
B	90°00'00"	200.00	314.16	282.84



UNPLATTED
S.E. 1/4, N.E. 1/4

UNPLATTED
N.E. 1/4, S.E. 1/4

FINAL PLAT
WALNUT HILLS SUBDIVISION
ORONOCO, MINNESOTA

YAGGY COLBY ASSOCIATES
 ENGINEERING ARCHITECTURE
 PLANNING SURVEYING
 LANDSCAPE ARCHITECTURE
 717 THIRD AVENUE, SOUTHEAST
 ROOSEVELT, MINNESOTA 55004
 612-266-6464
 MASON CITY, IOWA 515-424-8344

PROJECT NUMBER **3736**
 DATE **10-04-83**
 DRAWN BY
 REVISIONS
 SHEET NUMBER
2
 OF TWO SHEETS