

# OFFICIAL PLAT

## THOMPSON REPLAT

### Surveyor's Certificate

I hereby certify that I have surveyed and platted the property described on this plat as THOMPSON REPLAT; that this plat is a correct representation of the survey; that all distances are correctly shown on the plat in feet and hundredths of a foot; that all monuments have been correctly placed in the ground as shown; that the outside boundary lines are correctly designated on the plat; and that there are no wetlands or public highways to be designated on said plat other than as shown thereon.

James E. Swanson  
James E. Swanson, R.L.S.  
Minnesota Registration Number 11622



### NOTE:

ALL MONUMENTS SHOWN THUS: ○  
ARE 5/8" I.D. CAPPED PIPES SET  
WITH REGISTRATION NO. 11622.

### BASIS OF BEARING SYSTEM:

ALL BEARINGS ARE IN RELATIONSHIP  
WITH THE SOUTH LINE OF LOT 3, BLK.  
15, GOLDEN HILL ADD., WHICH IS  
ASSUMED TO BE N89°07'27"W.

State of Minnesota  
County of Olmsted

The surveyor's certificate was subscribed and sworn to before me, a  
Notary Public, this 4<sup>th</sup> day of November, 1987.

William E. Tointon  
Notary Public, Olmsted County, Minnesota

My commission expires August 4, 1989

### County Surveyor

I certify that this plat has been checked mathematically and that  
the plat conforms to the applicable platting laws, this 12<sup>th</sup>  
day of November, 1987.

Edward Kusile  
Olmsted County Surveyor

### City Approval

State of Minnesota  
County of Olmsted  
City of Rochester

I, Carole A. Grimm, City Clerk in and for the City of Rochester, do  
hereby certify that on the 2<sup>nd</sup> day of November, 1987, the  
accompanying plat was duly approved by the Common Council of the City of  
Rochester. In testimony thereof I have hereunto signed my name and  
affixed the seal of said City of Rochester this 3<sup>rd</sup> day of  
December, 1987.

Carole A. Grimm  
City Clerk

### Tax Statement

Taxes due and payable for the year 1987 have been paid.

Karen Coker Deputy  
Olmsted County Treasurer

Date January 29, 1988

No delinquent taxes due and transfer entered this 29<sup>th</sup> day of January, 1988.

Daniela J. Hamelster Deputy  
County Auditor

### County Recorder

DOCUMENT NUMBER 541267

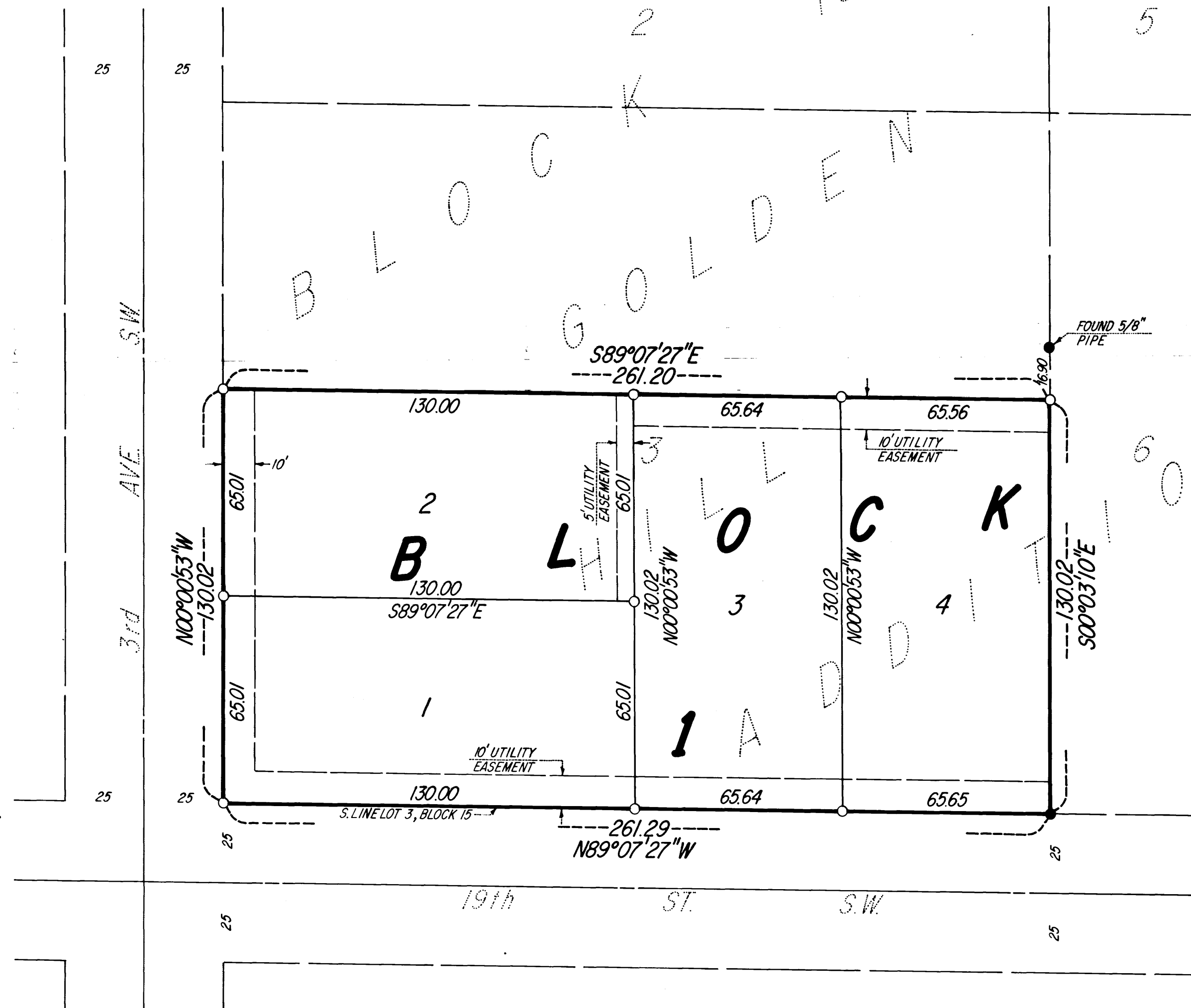
I hereby certify that this instrument was filed in the Office of the  
County Recorder for record on this 29 day of January,  
1988, at 1 o'clock P.M., and was duly recorded in the Olmsted  
County records.

By LOIS FINSTUEN

County Recorder

Carol Ann Ferris  
Deputy

UTILITY EASEMENT defined:  
An unobstructed easement for the construction and  
maintenance of all necessary underground or surface  
public utilities including rights to conduct drain-  
age and trimming on said easement.



\*and Warren C. Beighley and Carla J.  
Beighley, husband and wife, vendees  
of an unrecorded contract for deed,

### Instrument of Dedication

KNOW ALL MEN BY THESE PRESENTS: That Forest Homes & Mfg., Inc., a  
Minnesota Corporation, owners and proprietors, and Norwest Bank  
Rochester, N.A., a National Association, Mortgagee, of the following  
described property situated in the City of Rochester, State of Minne-  
sota, to wit:

The South 130.00 feet of Lot 3, Block 15, GOLDEN HILL ADDITION.

have caused the same to be surveyed and platted as THOMPSON REPLAT and  
do hereby dedicate to the public for the public use forever the easement-  
ments as shown on this plat for drainage and utility purposes only.

In witness whereof said Forest Homes & Mfg., Inc., a Minnesota Corpora-  
tion, has caused these presents to be signed by its proper officers  
this 9<sup>th</sup> day of November, 1987.

Norman D. Thompson John E. Thompson  
Norman D. Thompson, President John E. Thompson, Vice-President

State of Minnesota  
County of Olmsted

The foregoing instrument was acknowledged before me this 9<sup>th</sup> day  
of November, 1987, by Norman D. Thompson, President, and John E.  
Thompson, Vice-President, of Forest Homes & Mfg., Inc., on behalf of  
the Corporation.

William E. Tointon  
Notary Public, Olmsted County, Minnesota

My commission expires August 4, 1989

In witness whereof said Norwest Bank Rochester, N.A., a National Assoca-  
tion, has caused these presents to be signed by its proper officers  
this 10<sup>th</sup> day of November, 1987.

Robert B. Chaves Kathryn K. Moe

State of Minnesota  
County of Olmsted

The foregoing instrument was acknowledged before me this 10 day of  
November, 1987, by Robert B. Chaves, Vice Pres.  
and Kathryn K. Moe, Vice Pres. officers of Norwest Bank  
Rochester, N.A., on behalf of the Corporation.

Karen J. Jensen  
Notary Public, Olmsted County, Minnesota

My commission expires

In witness whereof said Warren C. Beighley and Carla J. Beighley have caused these  
presents to be signed this 29<sup>th</sup> day of December, 1987.

Warren C. Beighley Carla J. Beighley  
Warren C. Beighley Carla J. Beighley

State of Minnesota  
County of Olmsted

The foregoing instrument was acknowledged before me this 29<sup>th</sup> day of  
December, 1987, by Warren C. Beighley and Carla J. Beighley,  
husband and wife.

William E. Tointon  
Notary Public, Olmsted County, Minnesota  
My commission expires

PREPARED BY:  
McGHEE & BETTS, INC.  
CONSULTING ENGINEERS  
LAND SURVEYORS  
ROCHESTER, MINNESOTA