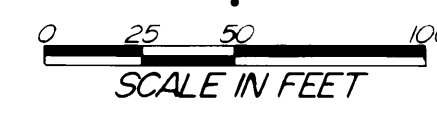


FERGUSON'S REPLAT

NOTE:
 ALL MONUMENTS SHOWN THUS: ○
 ARE 5/8" I.D. CAPPED PIPES SET
 WITH REGISTRATION NO. 11622
 ALL MONUMENTS SHOWN THUS: ●
 ARE FOUND 5/8" PIPES, UNLESS
 OTHERWISE NOTED.
 ALL BEARINGS ARE IN RELATIONSHIP
 WITH THE SOUTH LINE OF 18th ST. S.W.
 WHICH IS ASSUMED TO BE N89°17'34" W



Surveyor's Certificate

I hereby certify that I have surveyed and platted the property described on this plat as FERGUSON'S REPLAT; that this plat is a correct representation of the survey; that all distances are correctly shown on the plat in feet and hundredths of a foot; that all monuments have been correctly placed in the ground as shown; that the outside boundary lines are correctly designated on the plat; that there are no wet lands or public highways to be designated on said plat other than as shown thereon; and that said plat has been previously platted as Block 14, GOLDEN HILL ADDITION.

James E. Swanson
 James E. Swanson, R.L.S.
 Minnesota Registration Number 11622

State of Minnesota
 County of Olmsted

The surveyor's certificate was subscribed and sworn to before me, a Notary Public, this 3rd day of July, 1986.

William E. Tointon
 Notary Public, Olmsted County, Minnesota

My Commission Expires: WILLIAM E. TOINTON
 NOTARY PUBLIC - MINNESOTA
 OLMDSTED COUNTY
 MY COMM. EXP. AUG. 4, 1989

County Surveyor

I certify that this plat has been checked mathematically and that the plat conforms to the applicable platting laws, this 3rd day of July, 1986.

Roger W. Brand
 Olmsted County Surveyor

City Approval

State of Minnesota
 County of Olmsted
 City of Rochester

I, Carole A. Grimm, City Clerk in and for the City of Rochester, do hereby certify that on the 2nd day of July, 1986, the accompanying plat was duly approved by the Common Council of the City of Rochester. In testimony thereof I have hereunto signed my name and affixed the seal of said City of Rochester this 9th day of November, 1987.

Carole A. Grimm
 City Clerk

County Recorder

DOCUMENT NUMBER 50090037

I hereby certify that this instrument was filed in the Office of the County Recorder for record on this 10th day of November, 1987, at 2:14 o'clock P.M., and was duly recorded in the Olmsted County records.

By *David Finster*
 County Recorder

Deputy

Tax Statements

Taxes due and payable for the year 1987 have been paid.

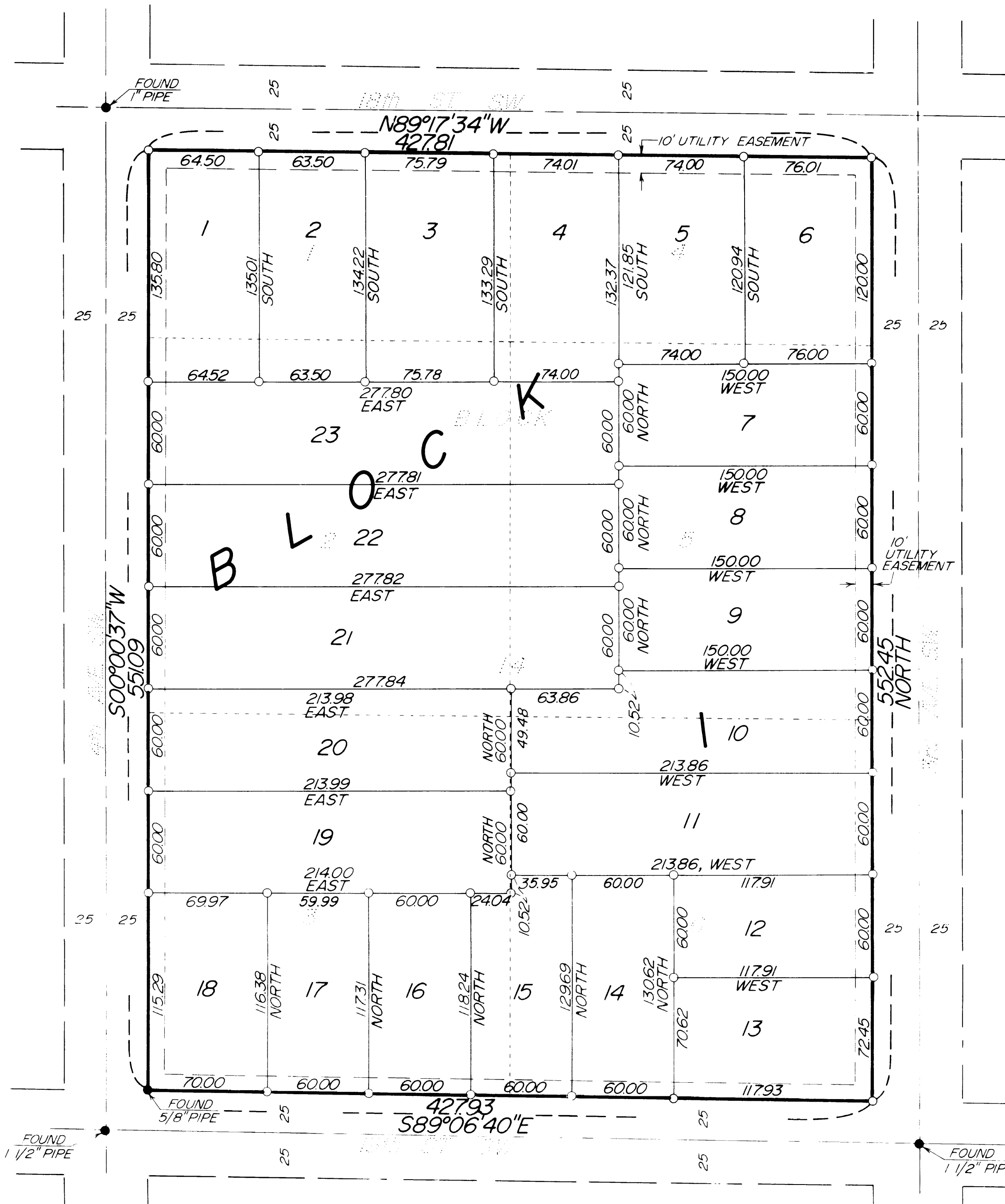
James Cochen
 Olmsted County Treasurer

Date November 10, 1987

No delinquent taxes due and transfer entered this 10th day of November, 1987.

Samuel J. Hamelster
 County Auditor

UTILITY EASEMENT defined:
 An unobstructed easement for the construction and maintenance of all necessary underground or surface public utilities including rights to conduct drainage and trimming on said easement.



Instrument of Dedication

KNOW ALL MEN BY THESE PRESENTS: That Lawrence E. Ferguson and Patricia M. Ferguson, husband and wife, owners and proprietors of the following described property situated in the City of Rochester, State of Minnesota to wit:

Lots 1, 2, 3, 4, 5 and 6, Block 14, Golden Hill Addition

have caused the same to be surveyed and replatted as FERGUSON'S REPLAT and do hereby donate and dedicate to the public for the public use forever the easements as shown on this plat for drainage and utility purposes only.

In witness whereof said Lawrence E. Ferguson and Patricia M. Ferguson have caused these presents to be signed this 22nd day of July, 1986.

Lawrence E. Ferguson Patricia M. Ferguson
 Lawrence E. Ferguson Patricia M. Ferguson

State of Minnesota
 County of Olmsted

The foregoing instrument was acknowledged before me this 22nd day of July, 1986, by Lawrence E. Ferguson and Patricia M. Ferguson, husband and wife.

William E. Tointon
 Notary Public, Olmsted County, Minnesota

My Commission Expires: WILLIAM E. TOINTON
 NOTARY PUBLIC - MINNESOTA
 OLMDSTED COUNTY
 MY COMM. EXP. AUG. 4, 1989

OFFICIAL PLAT
 PREPARED BY:
 MCGHIE & BETTS, INC.
 CONSULTING ENGINEERS
 LAND SURVEYORS
 ROCHESTER, MINNESOTA
 FERGUSON'S REPLAT