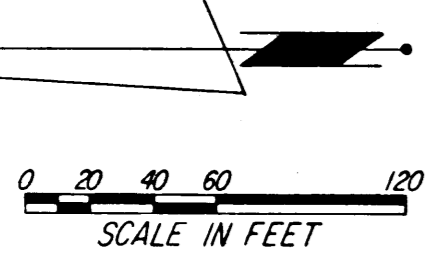


OFFICIAL PLAT

PINEWOOD THIRD SUBDIVISION



NOTE:
 ALL MONUMENTS SHOWN THUS: ○
 ARE 5/8" I.D. CAPPED PIPES SET
 WITH REGISTRATION NO. 11622.
 ALL MONUMENTS SHOWN THUS: ●
 ARE FOUND 5/8" PIPES, UNLESS
 OTHERWISE NOTED.

BASIS OF BEARING SYSTEM:
 ALL BEARINGS ARE IN RELATIONSHIP
 WITH THE EAST LINE N.E. 1/4 SEC. 13,
 WHICH IS ASSUMED TO BE N00°05'41"W.

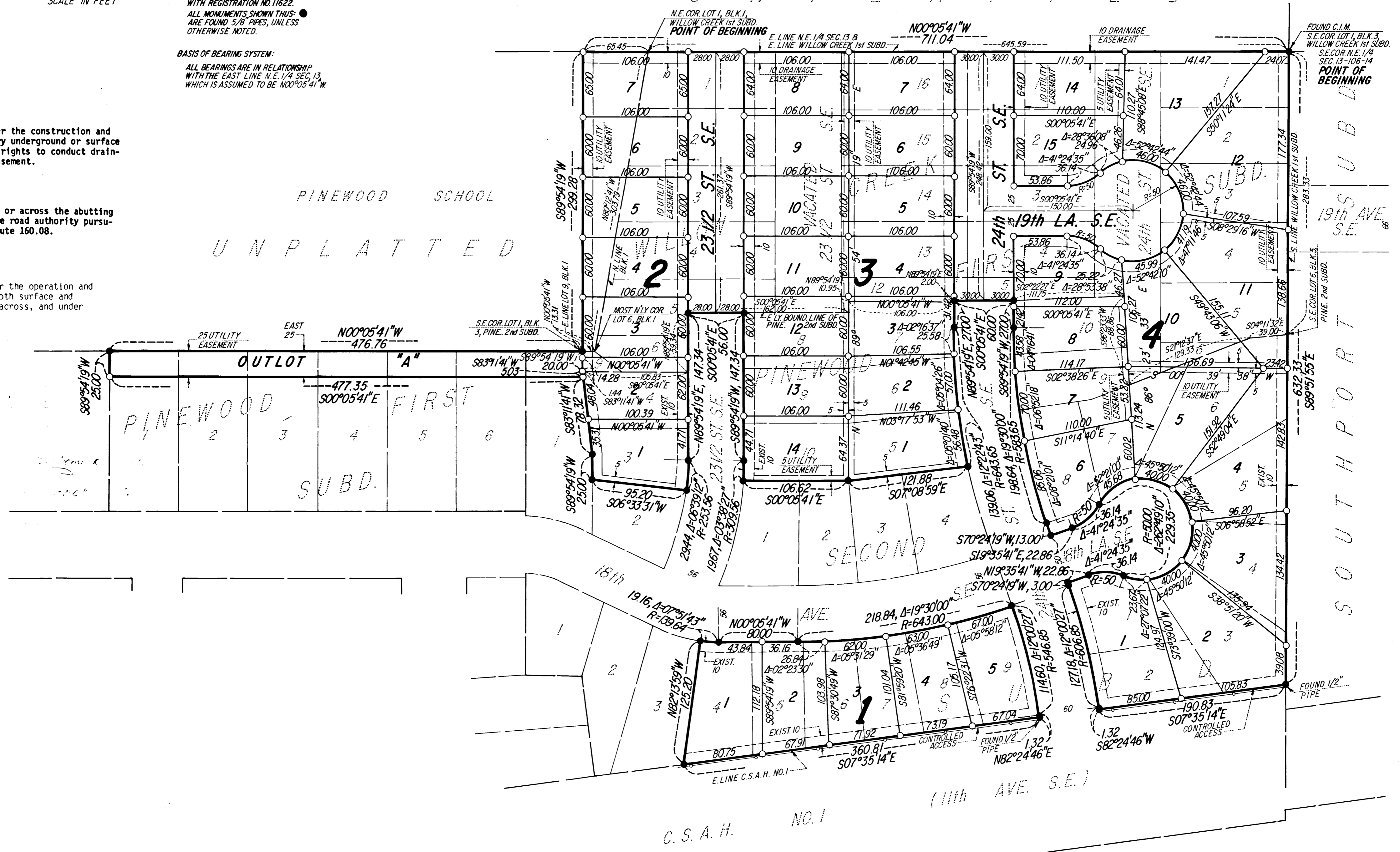
UTILITY EASEMENT defined:
 An unobstructed easement for the construction and
 maintenance of all necessary underground or surface
 public utilities including rights to conduct drain-
 age and trimming on said easement.

CONTROLLED ACCESS defined:
 Ingress or egress to, from, or across the abutting
 roadway is restricted by the road authority pursu-
 ant to Minnesota State Statute 160.08.

DRAINAGE EASEMENT DEFINED:
 An unobstructed easement for the operation and
 maintenance of waterways, both surface and
 underground, running over, across, and under
 said easement.

U N P L A T T E D

U N P L A T T E D



PREPARED BY:
 McGHIE & BETTS, INC.
 CONSULTING ENGINEERS
 LAND SURVEYORS
 ROCHESTER, MINNESOTA

OFFICIAL PLAT

PINEWOOD THIRD SUBDIVISION

Surveyor's Certificate

I hereby certify that I have surveyed and platted the property described on this plat as PINEWOOD THIRD SUBDIVISION; that this plat is a correct representation of the survey; that all distances are correctly shown on the plat in feet and hundredths of a foot; that all monuments have been correctly placed in the ground as shown; that the outside boundary lines are correctly designated on the plat; and that there are no wetlands or public highways to be designated on said plat other than as shown thereon.

James E. Swanson
James E. Swanson, R.L.S.
Minnesota Registration Number 11622

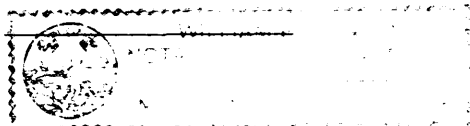
State of Minnesota
County of Olmsted

The surveyor's certificate was subscribed and sworn to before me, a Notary Public, this 29th day of September, 1987.

William E. Foster
Notary Public, Olmsted County, Minnesota

My commission expires

County Surveyor



I certify that this plat has been checked mathematically and that the plat conforms to the applicable platting laws, this 27th day of October, 1987.

Edward Kinzel
Olmsted County Surveyor

City Approval

State of Minnesota
County of Olmsted
City of Rochester

I, Carole A. Grimm, City Clerk in and for the City of Rochester, do hereby certify that on this 21st day of September, 1987, the accompanying plat was duly approved by the Common Council of the City of Rochester. In testimony thereof I have hereunto signed my name and affixed the seal of said City of Rochester this 15th day of October, 1987.

Carole A. Grimm
City Clerk

County Recorder

DOCUMENT NUMBER

I hereby certify that this instrument was filed in the Office of the County Recorder for record on this 16th day of October, 1987, at 3 o'clock P.M., and was duly recorded in the Olmsted County records.

By Lisa Lundeen
County Recorder

T. DeWay Johnson
Deputy

Tax Statements

Taxes due and payable for the year 1987 have been paid.

Kathryn Weatherly Deputy
Olmsted County Treasurer

Date Oct 16 1987

No delinquent taxes due and transfer entered this 16th day of Oct 19 87.

John W. Weston Deputy
County Auditor

Instrument of Dedication

KNOW ALL MEN BY THESE PRESENTS: That N.A. Realty, Inc., a Minnesota Corporation, and Independent School District No. 535, a Municipal Corporation, owners and proprietors, and Marquette Bank Rochester, a Minnesota Corporation, Mortgagee, of the following described property situated in the City of Rochester, State of Minnesota, to wit:

That part of WILLOW CREEK FIRST SUBDIVISION and vacated 23 1/2 Street S.E., and vacated 24th Street S.E. as dedicated in said WILLOW CREEK FIRST SUBDIVISION, Rochester, Minnesota, described as follows:

Beginning at the southeast corner of Lot 1, Block 3, in said WILLOW CREEK FIRST SUBDIVISION; thence North 00 degrees 05 minutes 41 seconds West, assumed bearing, along the east line thereof, 645.59 feet to the northeast corner of Lot 1, Block 1, in said subdivision; thence North 80 degrees 12 minutes 41 seconds West, along the north line of said Block 1, a distance of 303.79 feet to the most northerly corner of Lot 6 in said Block 1; thence North 00 degrees 05 minutes 41 seconds West along the east line of Lot 9 in said Block 1, a distance of 13.31 feet to the southeast corner of Lot 1, Block 3, PINEWOOD SECOND SUBDIVISION (the next thirteen courses are along the easterly boundary of said PINEWOOD SECOND SUBDIVISION); thence South 89 degrees 54 minutes 19 seconds West, 20.00 feet; thence South 83 degrees 11 minutes 41 seconds West, 1.44 feet; thence South 00 degrees 05 minutes 41 seconds East, 105.83 feet; thence North 89 degrees 54 minutes 19 seconds East, 59.34 feet; thence South 00 degrees 05 minutes 41 seconds East, 162.00 feet; thence North 89 degrees 54 minutes 19 seconds East, 106.00 feet; thence South 00 degrees 05 minutes 41 seconds East, 10.95 feet; thence North 89 degrees 54 minutes 19 seconds East, 2.00 feet; thence South 00 degrees 05 minutes 41 seconds East, 60.00 feet; thence South 02 degrees 22 minutes 27 seconds East, 111.75 feet; thence South 86 degrees 52 minutes 19 seconds West, 88.86 feet; thence South 21 degrees 12 minutes 37 seconds East, 129.33 feet; thence South 04 degrees 11 minutes 32 seconds East, 39.00 feet to the southeast corner of Lot 6, Block 5 in said PINEWOOD SECOND SUBDIVISION; thence South 89 degrees 51 minutes 55 seconds East, along the south line of said WILLOW CREEK FIRST SUBDIVISION, 283.33 feet to the point of beginning.

Also:

That part of the Northeast Quarter of Section 13, Township 106 North, Range 14 West, Olmsted County, Minnesota, described as follows:

Commencing at the southeast corner of said Northeast Quarter; thence North 00 degrees 05 minutes 41 seconds West, assumed bearing, along the east line of said Northeast Quarter and along the east line of WILLOW CREEK FIRST SUBDIVISION, 645.59 feet to the northeast corner of Lot 1, Block 1, in said Subdivision for a point of beginning; thence North 80 degrees 12 minutes 41 seconds West, along the north line of said Block 1, a distance of 303.79 feet to the most northerly corner of Lot 6, in said Block 1; thence North 00 degrees 05 minutes 41 seconds West, along the east line of Lot 9 in said Block 1, a distance of 13.31 feet to the southeast corner of Lot 1, Block 3, PINEWOOD SECOND SUBDIVISION; thence North 89 degrees 54 minutes 19 seconds East, 299.28 feet to the east line of said Northeast Quarter; thence South 00 degrees 05 minutes 41 seconds East, along said east line, 65.45 feet to the point of beginning.

Also:

The east 25.00 feet of Lots 1, 2, 3, 4, 5, and 6, Block 1, PINEWOOD FIRST SUBDIVISION, Rochester, Minnesota.

Also:

The east 25.00 feet of Lot 1, Block 3, PINEWOOD SECOND SUBDIVISION, Rochester, Minnesota.

Also:

Lots 4, 5, 6, 7, 8, and 9, Block 2, and Lots 1, 2, 3, 4, 5, 6, 7, 8, 9, and 10, Block 5, and Lots 5, 6, 7, 8, 9, and 10, Block 4, and Lots 3 and 4, Block 3, all in PINEWOOD SECOND SUBDIVISION, Rochester, Minnesota.

Containing 8.47 acres more or less.

have caused the same to be surveyed and platted as PINEWOOD THIRD SUBDIVISION and do hereby donate and dedicate to the public for the public use forever the thoroughfares and also dedicate the easements as shown on this plat for drainage and utility purposes only.

In witness whereof said N.A. Realty, Inc., a Minnesota Corporation, has caused these presents to be signed by its proper officer this 30th day of September, 1987.

Franklin P. Kottschade
Franklin P. Kottschade, President

State of Minnesota
County of Olmsted

The foregoing instrument was acknowledged before me this 30th day of September, 1987, by Franklin P. Kottschade, President of N.A. Realty, Inc., on behalf of the Corporation.

Rosalee C. Thum
Notary Public, Olmsted County, Minnesota

My commission expires

In witness whereof said Independent School District No. 535, a Municipal Corporation, has caused these presents to be signed by its proper officers this 30th day of September, 1987.

James R. Carroll, Chairman; Ray K. Bachelder, Clerk

State of Minnesota
County of Olmsted

The foregoing instrument was acknowledged before me this 30th day of September, 1987, by James R. Carroll, Chairman and Ray K. Bachelder, Clerk of Independent School District No. 535, a Municipal Corporation, on behalf of the Corporation.

Beverly Johnson
Notary Public, Olmsted County, Minnesota

My commission expires

In witness whereof said Marquette Bank Rochester, a Minnesota Corporation, has caused these presents to be signed by its proper officers this 30th day of September, 1987.

David A. Nauman; W.J. Nigbur
Senior Vice-President; Vice-President

State of Minnesota
County of Olmsted

The foregoing instrument was acknowledged before me this 30th day of September, 1987, by David A. Nauman, Senior Vice-President, and W.J. Nigbur, Vice-President, officers of Marquette Bank Rochester, on behalf of the Corporation.

Rosalee C. Thum
Notary Public, Olmsted County, Minnesota

My commission expires