

OFFICIAL PLAT

FOXCROFT SECOND

Surveyor's Certificate

I hereby certify that I have surveyed and platted the property described on this plat as FOXCROFT SECOND; that this plat is a correct representation of the survey; that all distances are correctly shown on the plat in feet and hundredths of a foot; that all monuments have been correctly placed in the ground as shown; that the outside boundary lines are correctly designated on the plat; and that there are no wetlands or public highways to be designated on said plat other than as shown thereon.

James E. Swanson, R.L.S. Minnesota Registration Number 11622

State of Minnesota County of Olmsted

The surveyor's certificate was subscribed and sworn to before me, a Notary Public, this 27th day of August, 1987.

William E. Joutin, Notary Public, Olmsted County, Minnesota

My commission expires [Notary Seal]

County Surveyor

I certify that this plat has been checked mathematically and that the plat conforms to the applicable platting laws, this 28th day of August, 1987.

Edward Kivale, Olmsted County Surveyor

Tax Statements

Taxes due and payable for the year 1987 have been paid.

Kathryn Weatherley, Deputy Olmsted County Treasurer

Date Sept 3, 1987

No delinquent taxes due and transfer entered this 17th day of September, 1987.

Daniel J. Louie, Deputy County Auditor

County Recorder

DOCUMENT NUMBER

I hereby certify that this instrument was filed in the Office of the County Recorder for record on this day of Sept, 1987, at 10 A.M., and was duly recorded in the Olmsted County records.

By Lois Linde, County Recorder

Deputy

City Approval

State of Minnesota County of Olmsted City of Rochester

I, Carole A. Grimm, City Clerk in and for the City of Rochester, do hereby certify that on the day of September, 1987, the accompanying plat was duly approved by the Common Council of the City of Rochester. In testimony thereof I have hereunto signed my name and affixed the seal of said City of Rochester this 16th day of September, 1987.

Carole A. Grimm, City Clerk

Tax Statement

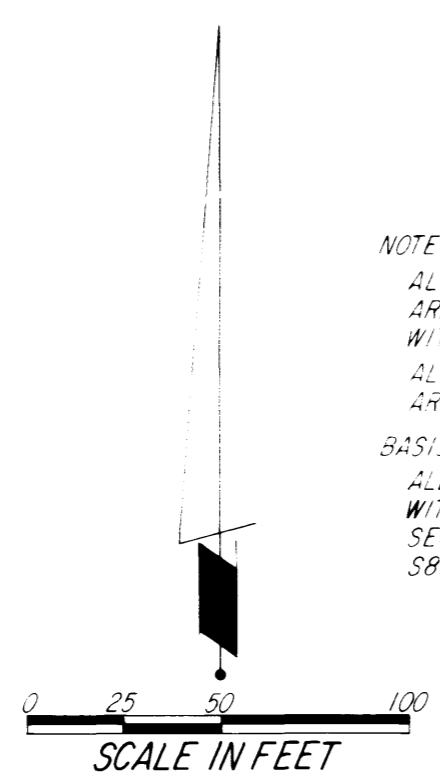
Taxes due and payable for the year 1987 have been paid.

Kathryn Weatherley, Deputy Olmsted County Treasurer

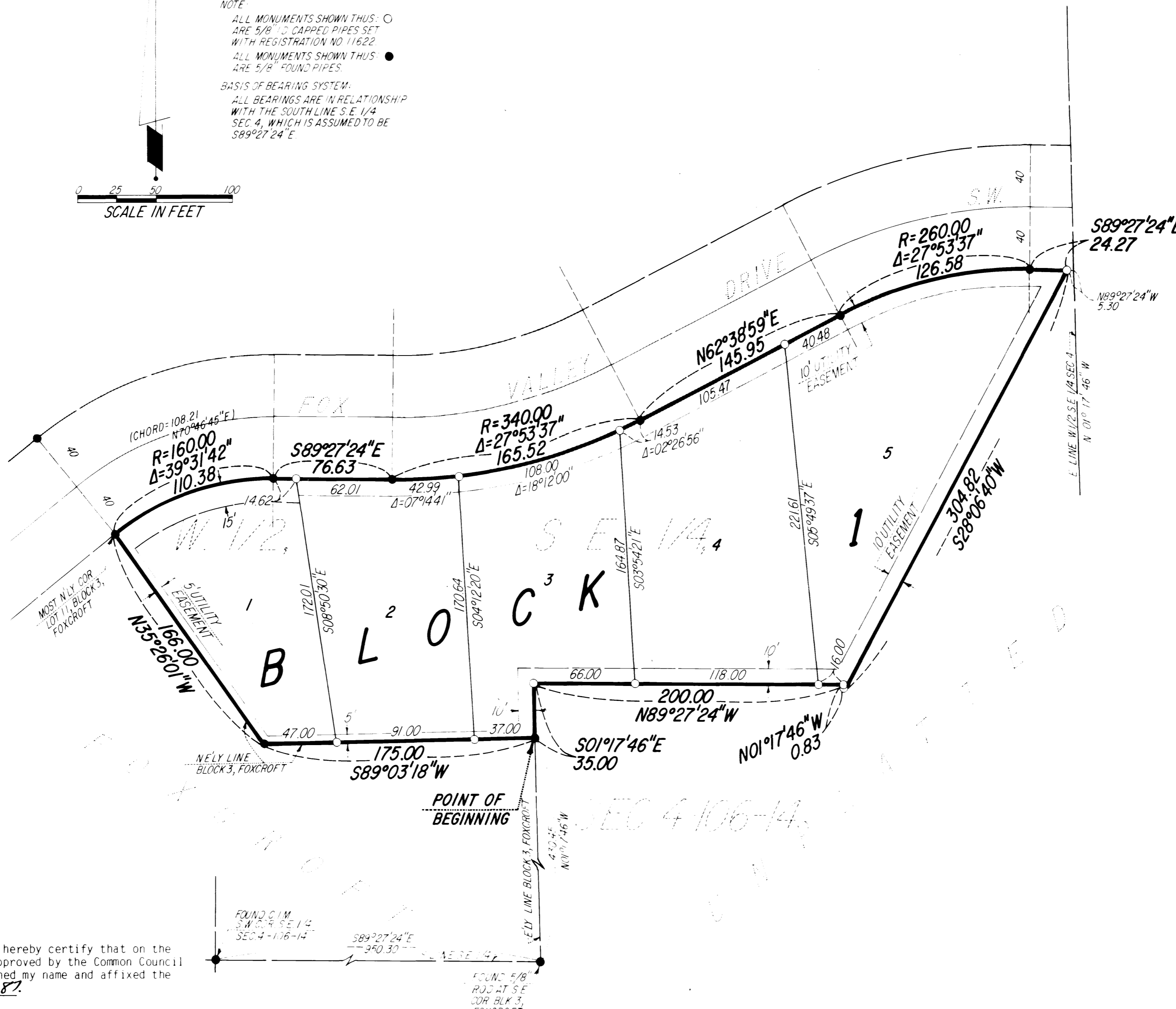
Date Sept 3, 1987

No delinquent taxes due and transfer entered this 17th day of September, 1987.

Daniel J. Louie, Deputy County Auditor



NOTE: ALL MONUMENTS SHOWN THUS: O ARE 5/8" I.C. CAPPED PIPES SET WITH REGISTRATION NO 11622. ALL MONUMENTS SHOWN THUS: ● ARE 5/8" FOUND PIPES. BASIS OF BEARING SYSTEM: ALL BEARINGS ARE IN RELATIONSHIP WITH THE SOUTH LINE S.E. 1/4 SEC. 4, WHICH IS ASSUMED TO BE S89°27'24"E



UTILITY EASEMENT defined: An unobstructed easement for the construction and maintenance of all necessary underground or surface public utilities including rights to conduct drainage and trimming on said easement.

Instrument of Dedication

KNOW ALL MEN BY THESE PRESENTS: That FoxCROFT Corporation, a Minnesota Corporation, owner and proprietor of the following described property situated in the City of Rochester, State of Minnesota, to wit:

A part of the west one half of the Southeast Quarter of Section 4, Township 106 North, Range 14 West, Rochester, Minnesota, described as follows:

Commencing at the southwest corner of said Southeast Quarter; thence South 89 degrees 27 minutes 24 seconds East, assumed bearing, along the south line of said Southeast Quarter, 950.30 feet to the southeast corner of Block 3, FOXCROFT (the next 9 courses are along the easterly and southerly boundary of said FOXCROFT); thence North 01 degrees 17 minutes 46 seconds West, 430.45 feet for the point of beginning; thence South 89 degrees 03 minutes 18 seconds West, 175.00 feet; thence North 35 degrees 26 minutes 01 seconds West, 166.00 feet; thence easterly 110.38 feet along a nontangential curve concave southerly, central angle of 39 degrees 31 minutes 42 seconds, radius of 160.00 feet, and the chord of said curve bears North 70 degrees 46 minutes 45 seconds East, 108.21 feet; thence South 89 degrees 27 minutes 24 seconds East, 76.63 feet; thence easterly 165.52 feet along a tangential curve concave northerly, central angle of 27 degrees 53 minutes 37 seconds, and radius of 340.00 feet; thence North 62 degrees 38 minutes 59 seconds East, 145.95 feet; thence easterly 126.58 feet along a tangential curve concave southerly, central angle of 27 degrees 53 minutes 37 seconds, and radius of 260.00 feet; thence South 89 degrees 27 minutes 24 seconds East, 24.27 feet; thence South 28 degrees 06 minutes 40 seconds West, 304.82 feet; thence North 01 degrees 17 minutes 46 seconds West, 0.83 feet; thence North 89 degrees 27 minutes 24 seconds West, 200.00 feet; thence South 01 degrees 17 minutes 46 seconds East, 35.00 feet to the point of beginning.

Containing 2.17 acres more or less.

have caused the same to be surveyed and platted as FOXCROFT SECOND and do hereby donate and dedicate to the public for the public use forever the easements as shown on this plat for drainage and utility purposes only.

In witness whereof said FoxCROFT Corporation has caused these presents to be signed by its proper officers this 2nd day of September, 1987.

John A. Klopp, Jr., President

State of Minnesota County of Olmsted

The foregoing instrument was acknowledged before me this 2nd day of September, 1987, by John A. Klopp, Jr., President of FoxCROFT Corporation, on behalf of the corporation.

Douglas N. Betts, Notary Public, Olmsted County, Minnesota

My commission expires [Notary Seal]

PREPARED BY: McGHIE & BETTS, INC. CONSULTING ENGINEERS LAND SURVEYORS ROCHESTER, MINNESOTA