

CANTEBURY SUBDIVISION

DRAINAGE EASEMENT DEFINED:

An unobstructed easement for the operation and maintenance of waterways, both surface and underground, running over, across, and under said easement.

UTILITY EASEMENT defined:

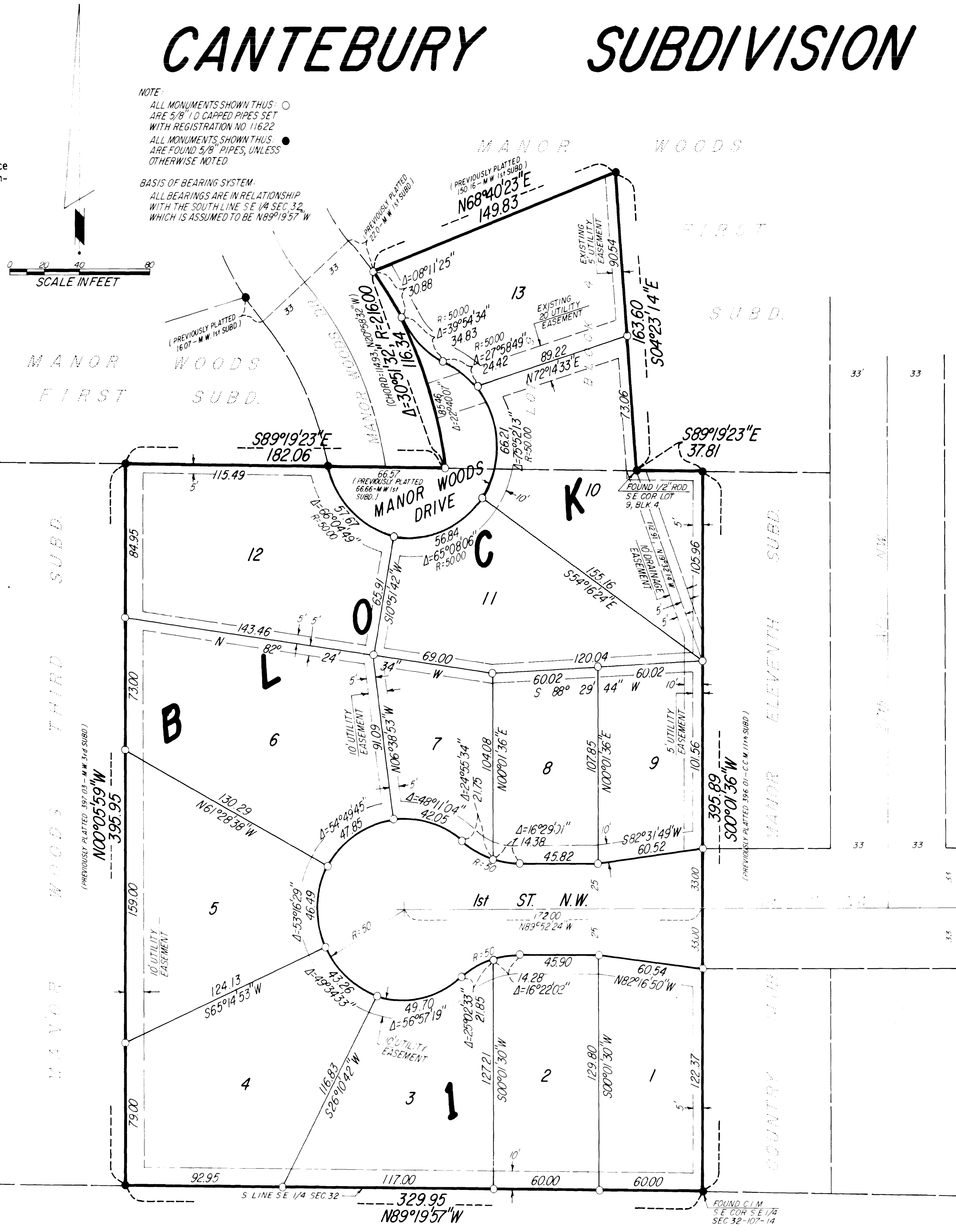
An unobstructed easement for the construction and maintenance of all necessary underground or surface public utilities including rights to conduct drainage and trimming on said easement.

NOTE:

ALL MONUMENTS SHOWN THUS: ○ ARE 5/8" I.D. CAPPED PIPES SET WITH REGISTRATION NO. 11622
ALL MONUMENTS SHOWN THUS: ● ARE FOUND 5/8" PIPES, UNLESS OTHERWISE NOTED

BASIS OF BEARING SYSTEM:

ALL BEARINGS ARE IN RELATIONSHIP WITH THE SOUTH LINE S E 1/4 SEC. 32, WHICH IS ASSUMED TO BE N89°19'57" W



Surveyor's Certificate

I hereby certify that I have surveyed and platted the property described on this plat as CANTEBURY SUBDIVISION; that this plat is a correct representation of the survey; that all distances are correctly shown on the plat in feet and hundredths of a foot; that all monuments have been correctly placed in the ground as shown; that the outside boundary lines are correctly designated on the plat; that there are no wet lands or public highways to be designated on said plat other than as shown thereon.

James E. Swanson
James E. Swanson, R.L.S.
Minnesota Registration Number 11622

State of Minnesota
County of Olmsted

The surveyor's certificate was subscribed and sworn to before me, a Notary Public, this 31st day of July, 1986.

William E. Tointon
Notary Public, Olmsted County, Minnesota

My Commission Expires: WILLIAM E. TOINTON
NOTARY PUBLIC - MINNESOTA
OLMSTED COUNTY
MY COMM. EXP. AUG. 4, 1989

I certify that this plat has been checked mathematically and that the plat conforms to the applicable platting laws, this 24th day of July, 1986.

Roger W. Brand
Olmsted County Surveyor

County Recorder
DOCUMENT NUMBER 45839

I hereby certify that this instrument was filed in the office of the County Recorder for record on this 31st day of July, 1986 at 11 o'clock A.M., and was duly recorded in the Olmsted County records.

Lisa Linstrom
County Recorder
Andryn Bickner
Deputy
REGISTRAR OF TITLES

City Approval

State of Minnesota
County of Olmsted
City of Rochester

I, Carole A. Grimm, City Clerk in and for the City of Rochester, do hereby certify that on this 31 day of July, 1986, the accompanying plat was duly approved by the Common Council of the City of Rochester. In testimony thereof I have hereunto signed my name and affixed the seal of said City of Rochester this 18 day of August, 1986.

Carole A. Grimm
City Clerk

Tax Statement

Taxes due and payable for the year 1986 have been paid.

Bob Ryan by *Kathryn Weatherley*, Deputy
Olmsted County Treasurer

Date 10-3-86

No delinquent taxes due and transfer entered this 3rd day of October, 1986.

David Pearson by *Meena Nelson*, Deputy
County Auditor

Instrument of Dedication

KNOW ALL MEN BY THESE PRESENTS: That Lawrence H. Bielenberg and Lois J. Bielenberg, husband and wife, and Ronald L. Markham and Joanne E. Markham, husband and wife, owners and proprietors of the following described property situated in the City of Rochester, State of Minnesota, to wit:

The South Three Hundred Ninety-six (396) feet of the East Three Hundred Thirty (330) feet of the Southeast Quarter (SE 1/4) of Section Thirty-two (32), Township One Hundred Seven (107) North, Range Fourteen (14) West, Rochester, Olmsted County, Minnesota.

Also:

Lot 9, Block 4, MANOR WOODS FIRST SUBDIVISION, Rochester, Minnesota.

have caused the same to be surveyed and platted as CANTEBURY SUBDIVISION and do hereby donate and dedicate to the public for the public use forever the thoroughfares and also dedicate the easements as shown on the plat for drainage and utility purposes only.

In witness whereof said Lawrence H. Bielenberg and Lois J. Bielenberg have caused these presents to be signed this 5th day of August, 1986.

Lawrence H. Bielenberg *Lois J. Bielenberg*
Lawrence H. Bielenberg Lois J. Bielenberg

State of Minnesota
County of Olmsted

The foregoing instrument was acknowledged before me this 5th day of August, 1986, by Lawrence H. Bielenberg and Lois J. Bielenberg, husband and wife.

William E. Tointon
Notary Public Olmsted County, Minnesota

My Commission Expires: WILLIAM E. TOINTON
NOTARY PUBLIC - MINNESOTA
OLMSTED COUNTY
MY COMM. EXP. AUG. 4, 1989

In witness whereof said Ronald L. Markham and Joanne E. Markham have caused these presents to be signed this 6th day of August, 1986.

Ronald L. Markham *Joanne E. Markham*
Ronald L. Markham Joanne E. Markham

State of Minnesota
County of Olmsted

The foregoing instrument was acknowledged before me this 6th day of August, 1986, by Ronald L. Markham and Joanne E. Markham, husband and wife.

William E. Tointon
Notary Public, Olmsted County, Minnesota

My Commission Expires: WILLIAM E. TOINTON
NOTARY PUBLIC - MINNESOTA
OLMSTED COUNTY
MY COMM. EXP. AUG. 4, 1989

OFFICIAL PLAT

PREPARED BY:
McGHEE & BETTS, INC
CONSULTING ENGINEERS
LAND SURVEYORS
ROCHESTER, MINNESOTA

CANTEBURY SUBDIVISION