

# RIVERVIEW WEST FIRST REPLAT

Surveyor's Certificate

I hereby certify that I have surveyed and platted the property described on this plat as RIVERVIEW WEST FIRST REPLAT; that this is a correct representation of the survey; that all distances are correctly shown on the plat in feet and hundredths of a foot; that all monuments have been correctly placed in the ground as shown; that the outside boundary lines are correctly designated on the plat; that there are no wet lands or public highways to be designated on said plat other than as shown thereon.

James E. Swanson  
James E. Swanson, R.L.S.  
Minnesota Registration Number 11622

State of Minnesota  
County of Olmsted

The surveyor's certificate was subscribed and sworn to before me, a Notary Public, this 29<sup>th</sup> day of May, 1986.

William E. Tomlin  
Notary Public, Olmsted County, Minnesota

My Commission Expires:

County Surveyor

I certify that this plat has been checked mathematically and that the plat conforms to the applicable platting laws, this 3<sup>rd</sup> day of June, 1986.

Robert W. Grand  
Olmsted County Surveyor

County Recorder

DOCUMENT NUMBER 010

I hereby certify that this instrument was filed in the office of the County Recorder for record on this 17 day of June, 1986 at 8:14 o'clock P.M., and was duly recorded in the Olmsted County records.

BY Jan Gustafson  
County Recorder

Deputy

City Approval

State of Minnesota  
County of Olmsted  
City of Rochester

I, Carole A. Grimm, City Clerk in and for the City of Rochester, do hereby certify that on this 2 day of June, 1986 the accompanying plat was duly approved by the Common Council of the City of Rochester. In testimony thereof I have hereunto signed my name and affixed the seal of said City of Rochester this 13 day of June, 1986.

Carole A. Grimm  
City Clerk

Tax Statement

Taxes due and payable for the year 1986 have been paid.

Bob Ryan by Kathryn Weatherly Deputy  
Olmsted County Treasurer

Date

No delinquent taxes due and transfer entered this 17<sup>th</sup> day of June, 1986.

Hazel Pearson by  
County Auditor  
Melva Nelson, Deputy

UTILITY EASEMENT defined:  
An unobstructed easement for the construction and maintenance of all necessary underground or surface public utilities including rights to conduct drainage and trimming on said easement.

Instrument of Dedication

KNOW ALL MEN BY THESE PRESENTS: That Riverview West, Inc., a Minnesota Corporation, owner and proprietor, Gentling-LaCanne Enterprises, Inc., a Minnesota Corporation, vendor of a Contract for Deed and mortgagee, and Norwest Bank Rochester, N.A., a National Association, mortgagee of the following described property situated in the City of Rochester, State of Minnesota to wit:

Lots 1 and 2, Block 1, and Lots 1 and 2, Block 2, and Lot 1, Block 3, and Lots 1, 2 and 3, Block 4, and OUTLOT "B", all in RIVERVIEW WEST, Rochester, Minnesota.

Also:

The east 33.00 feet of that part of the south one half of the Southwest Quarter of Section 23, Township 107 North, Range 14 West, Rochester, Minnesota which lies northerly of the easterly extension of the south line of Lot 1, Block 1, REPLAT OF LOTS 1, 2, 3 AND 4, BLOCK 4, ELTON HILLS EAST FIFTH SUBDIVISION.

have caused the same to be surveyed and platted as RIVERVIEW WEST FIRST REPLAT and do hereby donate and dedicate to the public for the public use forever the easements as shown on this plat for drainage and utility purposes only.

In witness whereof said Riverview West, Inc., a Minnesota Corporation, has caused these presents to be signed by its proper officers this 2<sup>nd</sup> day of June, 1986.

Tom Bouquet, Pres. John Bouquet Secretary  
Tom Bouquet, President John Bouquet, Secretary-Treasurer

State of Minnesota  
County of Olmsted

The foregoing instrument was acknowledged before me this 2<sup>nd</sup> day of June, 1986, by Tom Bouquet, President and John Bouquet, Secretary-Treasurer, officers of Riverview West, Inc., on behalf of the corporation.

William E. Tomlin  
Notary Public, Olmsted County, Minnesota  
My Commission Expires:

In witness whereof said Gentling-LaCanne Enterprises, Inc., a Minnesota Corporation, has caused these presents to be signed by its proper officers this 2<sup>nd</sup> day of June, 1986.

Richard A. Gentling Michael F. LaCanne  
Richard A. Gentling, President Michael F. LaCanne, Secretary

State of Minnesota  
County of Olmsted

The foregoing instrument was acknowledged before me this 2<sup>nd</sup> day of June, 1986, by Richard A. Gentling, President, and Michael F. LaCanne, Secretary, officers of Gentling-LaCanne Enterprises, Inc., on behalf of the corporation.

William E. Tomlin  
Notary Public, Olmsted County, Minnesota  
My Commission Expires:

In witness whereof said Norwest Bank Rochester, N.A., a National Association, has caused these presents to be signed by its proper officers this 30<sup>th</sup> day of May, 1986.

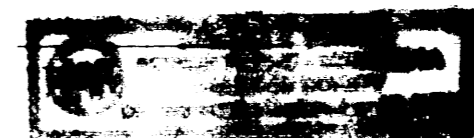
Jody L. Bower, A.V.P. David G. Wittenberg, Vice President  
Jody L. Bower, Assistant Vice President David G. Wittenberg, Vice President

State of Minnesota  
County of Olmsted

The foregoing instrument was acknowledged before me this 30<sup>th</sup> day of May, 1986 by Jody L. Bower, Assistant Vice-President, and David G. Wittenberg, Vice-President, officers of Norwest Bank Rochester, N.A., on behalf of the corporation.

Michelle R. Sursuly  
Notary Public, Olmsted County, Minnesota

My Commission Expires:

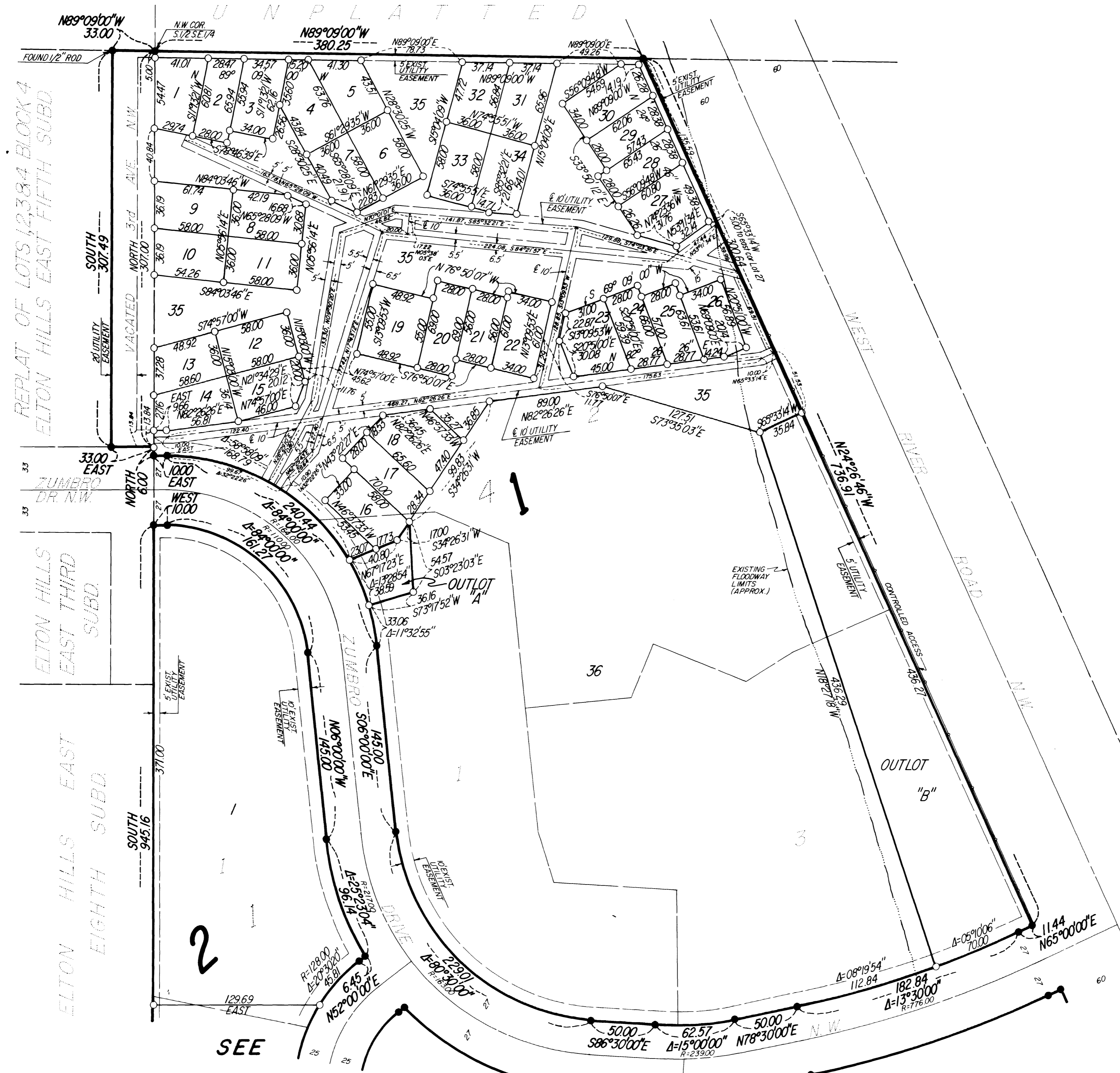


**OFFICIAL PLAT**

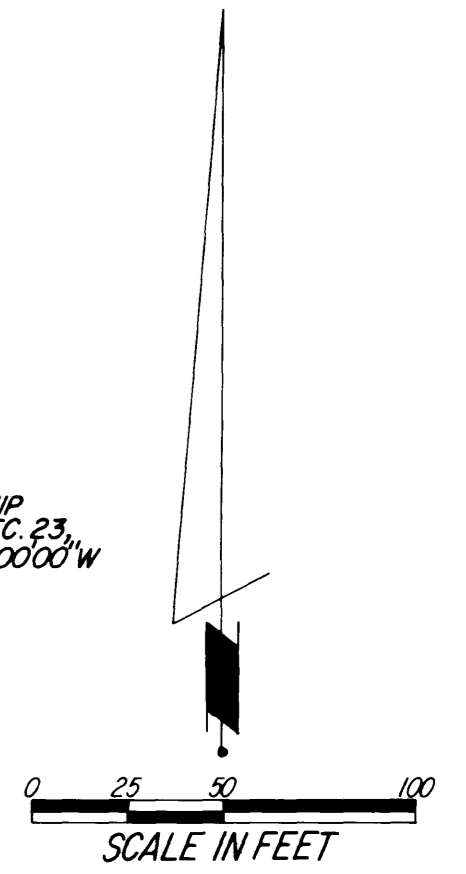
PREPARED BY:  
MCGHIE & BETTS, INC.  
CONSULTING ENGINEERS  
LAND SURVEYORS  
ROCHESTER, MINNESOTA

# RIVERVIEW WEST FIRST REPLAT

UNPLATTED



NOTE:  
 ALL MONUMENTS SHOWN THUS: ○  
 ARE 5/8" I.D. CAPPED PIPES SET  
 WITH REGISTRATION NO. 11622.  
 ALL MONUMENTS SHOWN THUS: ●  
 ARE FOUND 5/8" PIPE, UNLESS  
 OTHERWISE NOTED.  
 BASIS OF BEARING SYSTEM:  
 ALL BEARINGS ARE IN RELATIONSHIP  
 WITH THE WEST LINE S.W. 1/4 SEC. 23,  
 WHICH IS ASSUMED TO BE S00°00'00" W



REPLAT OF LOTS 1,2,3&4 BLOCK 4  
 ELTON HILLS EAST FIFTH SUBD.

ELTON HILLS EAST THIRD  
 SUBD.

ELTON HILLS EAST EIGHTH  
 SUBD.

2

SEE

SHEET

3

OF

3

SHEETS

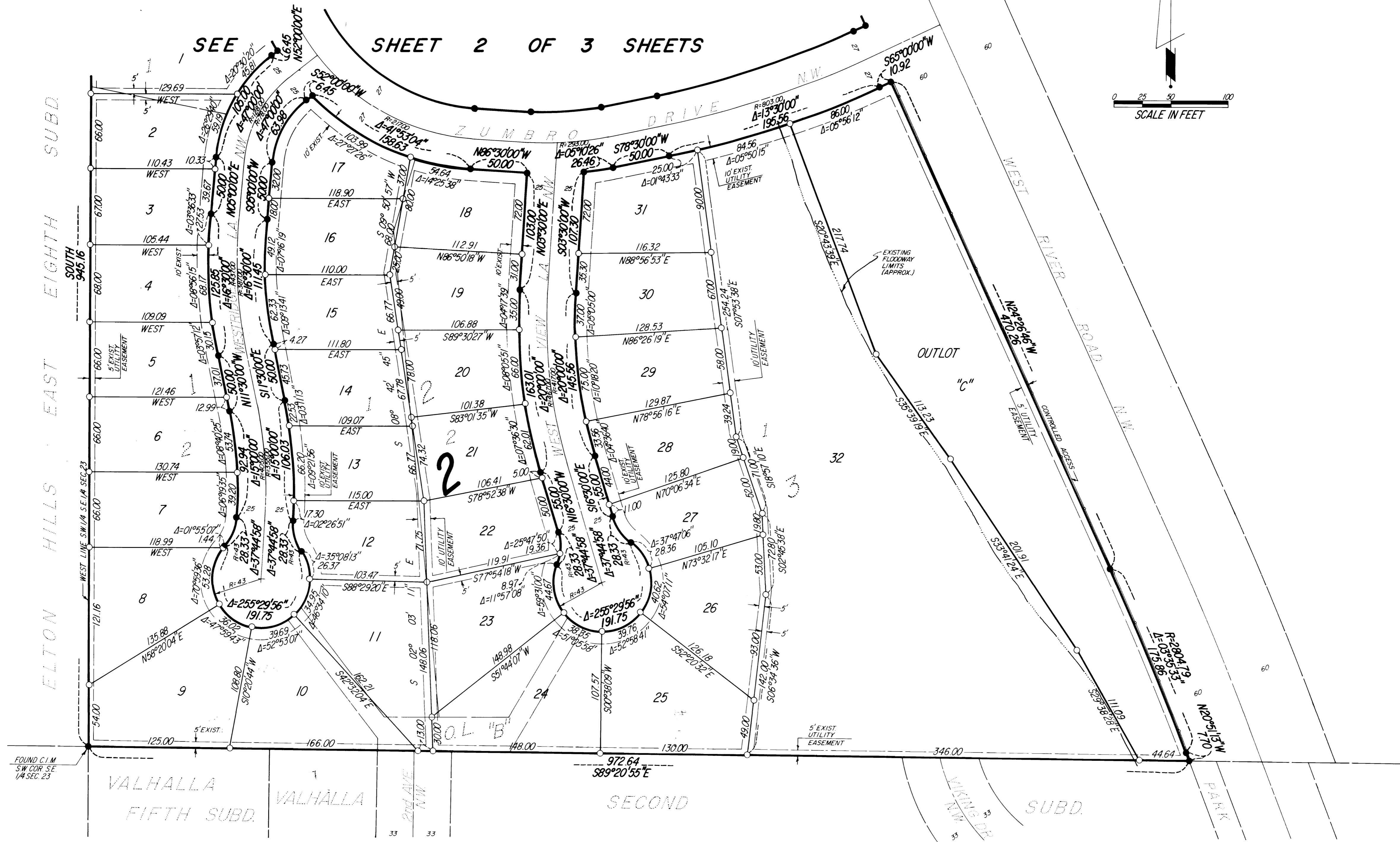
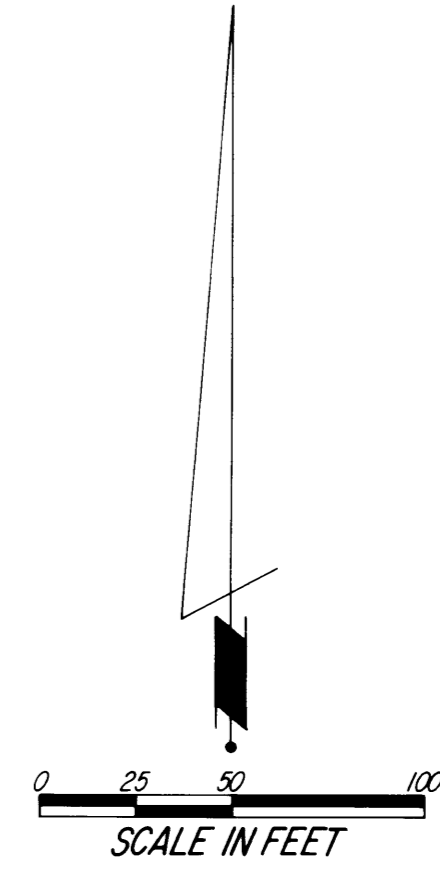
OFFICIAL PLAT

PREPARED BY:  
 MCGHIE & BETTS, INC.  
 CONSULTING ENGINEERS  
 LAND SURVEYORS  
 ROCHESTER, MINNESOTA

10/17/2016

# RIVERVIEW WEST FIRST REPLAT

SHEET 2 OF 3 SHEETS



**OFFICIAL PLAT**

PREPARED BY:  
 MCGHIE & BETTS, INC.  
 CONSULTING ENGINEERS  
 LAND SURVEYORS  
 ROCHESTER, MINNESOTA