

Surveyor's Certificate

I hereby certify that I have surveyed and platted the property described on this plat as 37TH STREET BUSINESS PARK; that this is a correct representation of the survey; that all distances are correctly shown on the plat in feet and hundredths of a foot; that all monuments have been correctly placed in the ground as shown; that the outside boundary lines are correctly designated on the plat; and that there are no wet lands or public highways to be designated on said plat other than as shown thereon.

James E. Swanson
James E. Swanson, R.L.S.
Minnesota Registration Number 11622

State of Minnesota
County of Olmsted

The surveyor's certificate was subscribed and sworn to before me, a Notary Public, this 24th day of June, 1985.

William E. Tomlin
Notary Public, Olmsted County, Minnesota

My Commission Expires:

County Surveyor

I certify that this plat has been checked mathematically and that the plat conforms to the applicable platting laws, this 24th day of June, 1985.

Roger W. Brand
Olmsted County Surveyor

City Approval

State of Minnesota
County of Olmsted
City of Rochester

I, Carole A. Grimm, City Clerk in and for the City of Rochester, do hereby certify that on this 14th day of July, 1985, the accompanying plat was duly approved by the Common Council of the City of Rochester. In testimony thereof I have hereunto signed my name and affixed the seal of said City of Rochester this 5th day of July, 1985.

Carole A. Grimm
City Clerk

County recorder

DOCUMENT NUMBER

I hereby certify that this instrument was filed in the office of the County Recorder for record on this 14th day of Aug., 1985 at 8 o'clock A.M., and was duly recorded in the Olmsted County records.

Lois Finstuen
County Recorder

Carole M. Ferris
Deputy

Tax Statements

Taxes due and payable for the year 1985 have been paid.

Kathryn Weatherly, Deputy
Olmsted County Treasurer

Date August 13, 1985

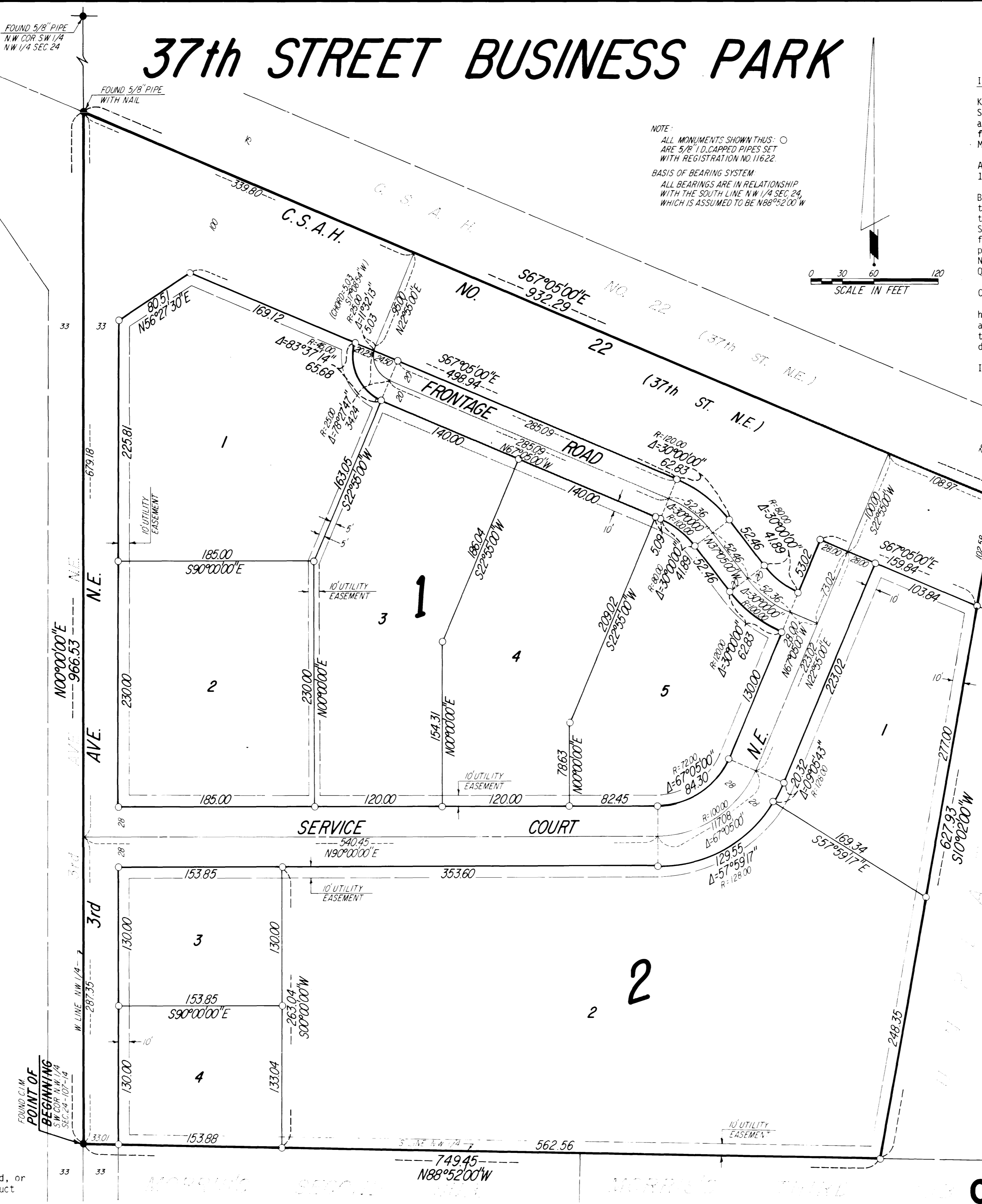
No delinquent taxes due and transfer entered this 13th day of August, 1985

John W. West, Deputy
County Auditor

Utility Easement Defined

An unobstructed easement for the construction and maintenance of all necessary overhead, underground, or surface public utilities including rights to conduct drainage and trimming on said easement.

37th STREET BUSINESS PARK



Instrument of Dedication

KNOW ALL MEN BY THESE PRESENTS: That Donald L. Shreve and Elizabeth A. Shreve a/k/a/Bette A. Shreve, husband and wife, owners and proprietors, and Norwest Bank Rochester, N.A., a National Association, mortgagee of the following described property situated in the City of Rochester, State of Minnesota to wit:

A part of the Northwest Quarter of Section 24, Township 107 North, Range 14 West, Olmsted County, Minnesota, described as follows:

Beginning at the southwest corner of Northwest Quarter of said Section 24; thence on an assumed bearing of due north along the west line of said Section, 966.53 feet to a point in the centerline of C.S.A.H. Number 22; thence South 67 degrees 05 minutes 00 seconds East along said centerline 932.29 feet; thence South 10 degrees 02 minutes 00 seconds West 627.93 feet to a point in the south line of the Northwest Quarter of said Section 24; thence North 88 degrees 52 minutes 00 seconds West along the south line of said Quarter Section 749.45 feet to the point of beginning.

Containing 14.86 acres more or less.

have caused the same to be surveyed and platted as 37th STREET BUSINESS PARK and do hereby donate and dedicate to the public for the public use forever the thoroughfares and also dedicate the easements as shown on this plat for drainage and utility purposes only.

In witness whereof said Donald L. Shreve and Elizabeth A. Shreve a/k/a/Bette A. Shreve, husband and wife, have caused these presents to be signed this 28th day of June, 1985.

Donald L. Shreve Elizabeth A. Shreve
Donald L. Shreve Elizabeth A. Shreve

State of Minnesota
County of Olmsted

The foregoing instrument was acknowledged before me this 28th day of June, 1985 by Donald L. Shreve and Elizabeth A. Shreve a/k/a/Bette A. Shreve, husband and wife.

William E. Tomlin
Notary Public, Olmsted County, Minnesota
My commission expires

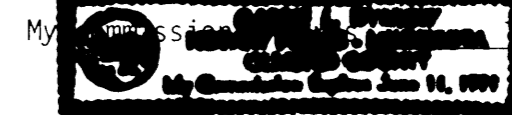
In witness whereof said Norwest Bank Rochester, N.A., a National Association has caused these presents to be signed by its proper officers this 13th day of July, 1985.

Sam C. Shue Ed G. Wulke
Ex. Vice Pres. Vice Pres.

State of Minnesota
County of Olmsted

The foregoing instrument was acknowledged before me this day of July, 1985, by Ex. Vice Pres. and Vice Pres. officers of Norwest Bank Rochester on behalf of the corporation.

Carrie L. Wislow
Notary Public, Olmsted County, Minnesota
My Commission Expires



OFFICIAL PLAT

37th STREET BUSINESS PARK

PREPARED BY:
McGHEE & BETTS, INC.
CONSULTING ENGINEERS
LAND SURVEYORS
ROCHESTER, MINNESOTA

1065-5023