

CIMARRON FOUR

Surveyor's Certificate

I hereby certify that I have surveyed and platted the property described on this plat as CIMARRON FOUR; that this is a correct representation of the survey; that all distances are correctly shown on the plat in feet and hundredths of a foot; that all monuments have been correctly placed in the ground as shown; that the outside boundary lines are correctly designated on the plat; and that there are no wet lands or public highways to be designated on said plat other than as shown thereon.

James E. Swanson
James E. Swanson, R.L.S.
Minnesota Registration Number 11622

State of Minnesota
County of Olmsted

The surveyor's certificate was subscribed and sworn to before me, a Notary Public, this 25th day of April, 1985.

William E. Tonten
Notary Public, Olmsted County, Minnesota

My commission expires _____

County Surveyor

I certify that this plat has been checked mathematically and that the plat conforms to the applicable platting laws, this 29th day of April, 1985.

Roger W. Brand
Olmsted County Surveyor

City Approval

State of Minnesota
County of Olmsted
City of Rochester

I, Carole A. Grimm, City Clerk in and for the City of Rochester, do hereby certify that on this 6th day of MAY, 1985, the accompanying plat was duly approved by the Common Council of the City of Rochester. In testimony thereof I have hereunto signed my name and affixed the seal of said City of Rochester this 14 day of MAY, 1985.

Carole A. Grimm
City Clerk

County Recorder

DOCUMENT NUMBER 48114

I hereby certify that this instrument was filed in the Office of the County Recorder for record on this 22 day of May, 1985, at 11:20 o'clock P.M., and was duly recorded in the Olmsted County records.

By LOIS FINSTUEN
County Recorder

Carole A. Grimm
Deputy

Tax Statements

Taxes due and payable for the year 1985 have been paid.

Bob Ryan
James Cochran
Olmsted County Treasurer

Date May 22, 1985

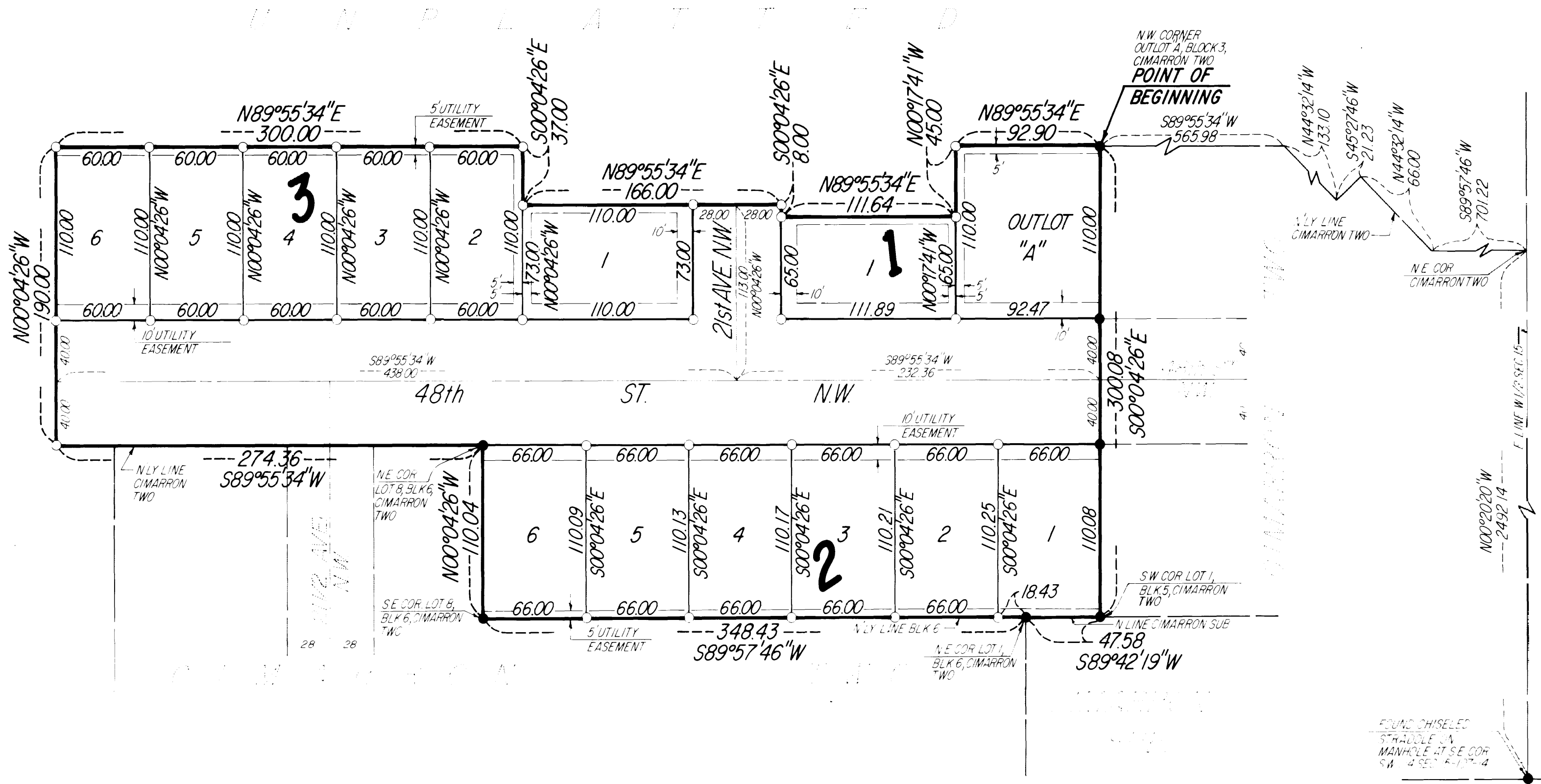
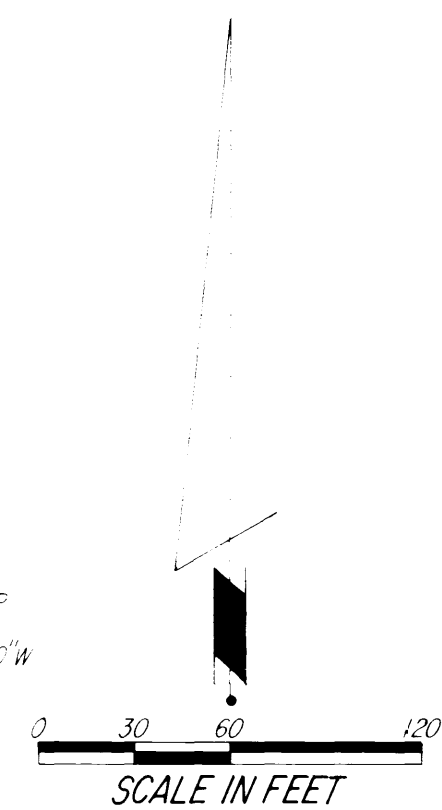
No delinquent taxes due and transfer entered this 22nd day of May, 1985.

Melvin Nelson
County Auditor

Utility Easement Defined

An unobstructed easement for the construction and maintenance of all necessary overhead, underground, or surface public utilities including rights to conduct drainage and trimming on said easement.

NOTE:
ALL MONUMENTS SHOWN THUS: ○ ARE 5/8" I.C. CAPPEE PIPES SET WITH REGISTRATION NO. 11622
ALL MONUMENTS SHOWN THUS: ● ARE FOUND 5/8" PIPES, UNLESS OTHERWISE NOTED
BASIS OF BEARING SYSTEM:
ALL BEARINGS ARE IN RELATIONSHIP WITH THE EAST LINE W 1/2 SEC 15, WHICH IS ASSUMED TO BE N00°20'20"W



Instrument of Dedication

KNOW ALL MEN BY THESE PRESENTS: That Western Walls, Inc., a Minnesota corporation, owner and proprietor of the following described property situated in the City of Rochester, State of Minnesota to wit:

A part of the West Half of Section 15, Township 107 North, Range 14 West, Rochester, Minnesota described as follows:

Commencing at the southeast corner of said West Half; thence North 00 degrees 20 minutes 20 seconds West, assumed bearing, along the east line of said West Half, 2492.14 feet to the northeast corner of CIMARRON TWO, (the next five courses are along the northerly line of said CIMARRON TWO); thence South 89 degrees 57 minutes 46 seconds West, 701.22 feet; thence North 44 degrees 32 minutes 14 seconds West, 66.00 feet; thence South 45 degrees 27 minutes 46 seconds West, 21.23 feet; thence North 44 degrees 32 minutes 14 seconds West, 133.10 feet; thence South 89 degrees 55 minutes 34 seconds West, 565.98 feet to the northwest corner of OUTLOT "A", BLOCK 3, in said CIMARRON TWO, for the point of beginning; thence South 00 degrees 04 minutes 26 seconds East, along the westerly line of said CIMARRON TWO, 300.08 feet to the southwest corner of Lot 1, Block 5, in said CIMARRON TWO; said point also being on the north line of CIMARRON SUBDIVISION; thence South 89 degrees 42 minutes 19 seconds West, along said north line, 47.58 feet to the northeast corner of Lot 1, Block 6, in said CIMARRON TWO; thence South 89 degrees 57 minutes 46 seconds West, along the northerly line of said Block 6, a distance of 348.43 feet to the southeast corner of Lot 8 in said Block 6; thence North 00 degrees 04 minutes 26 seconds West, 110.04 feet to the northeast corner of said Lot 8; thence South 89 degrees 55 minutes 34 seconds West, along the northerly line of said CIMARRON TWO and its westerly extension, 274.36 feet; thence North 00 degrees 04 minutes 26 seconds West, 190.00 feet; thence North 89 degrees 55 minutes 34 seconds East, 300.00 feet; thence South 00 degrees 04 minutes 26 seconds East, 37.00 feet; thence North 89 degrees 55 minutes 34 seconds East, 166.00 feet; thence South 00 degrees 04 minutes 26 seconds East, 8.00 feet; thence North 89 degrees 55 minutes 34 seconds East, 111.64 feet; thence North 00 degrees 17 minutes 41 seconds West, 45.00 feet; thence North 89 degrees 55 minutes 34 seconds East, 92.90 feet to the point of beginning.

Containing 3.57 acres more or less.

Have caused the same to be surveyed and platted as CIMARRON FOUR and do hereby donate and dedicate to the public for the public use forever the thoroughfares and also dedicate the easements as shown on this plat for drainage and utility purposes only.

In witness whereof said Western Walls Inc., a Minnesota corporation has caused these presents to be signed by its proper officer this 26 day of APRIL, 1985.

Robert D. DeWitz
Robert D. DeWitz, President

State of Minnesota
County of Olmsted

The foregoing instrument was acknowledged before me this 26th day of April, 1985, by Robert D. DeWitz, President of Western Walls Inc., a Minnesota corporation on behalf of the corporation.

William E. Tonten
Notary Public, Olmsted County, Minnesota
My commission expires _____

PREPARED BY:
MCGHIE & BETTS, INC.
CONSULTING ENGINEERS
LAND SURVEYORS
ROCHESTER MINNESOTA

OFFICIAL PLAT

CIMARRON FOUR