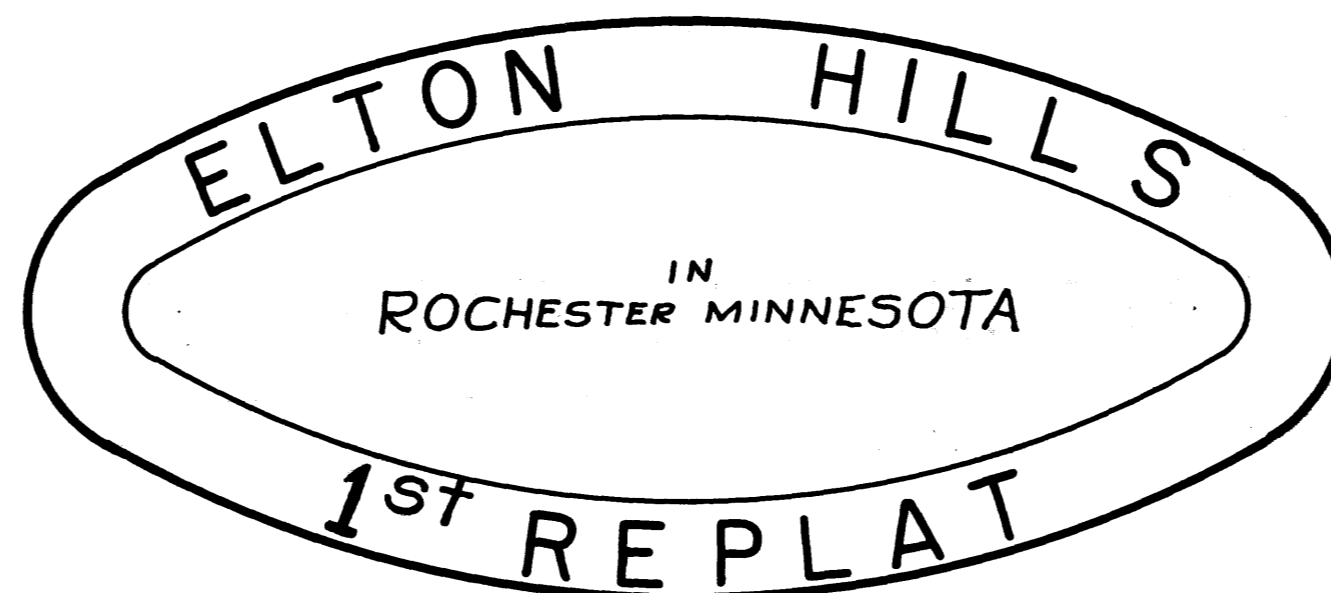


SURVEYOR'S CERTIFICATE



I, K.M. McGhie, Registered Civil Engineer and Land Surveyor, do hereby certify that at the request of the owners, Builders Land Company, I have surveyed and platted into streets, lots, and blocks as shown on the accompanying plat on which this certificate is written and which shall be known and designated as **ELTON HILLS FIRST REPLAT** the following described lands:

ALL OF BLOCKS #8, #9, AND #10 AND
LOTS 11-15 INCLUSIVE IN BLOCK #11
ALL IN ELTON HILLS SECOND SUBDIVISION.

And I further certify that the accompanying plat is a correct representation of the survey, that all distances are correctly shown in feet and decimals of feet, that monuments for the guidance of future surveys have been placed in the ground as shown thus (o), that the outside boundaries are correctly designated on the plat, that there are no wetlands to be designated thereon, and that said tract has not been previously platted except as Elton Hills Second Subdivision.

Dated this 24th day of August, 1957 A.D.

K.M. McGhie
K.M. McGhie, Registered Civil Engineer & Land Surveyor No. 1613

State of Minnesota
County of Olmsted
Subscribed and sworn to before me, a Notary Public,
this 24th day of Aug. 1957 A.D.

Walter Cookcroft
Notary Public, Olmsted County, Minnesota

My commission expires 4-8-1964

State of Minnesota } S.S.
County of Olmsted }
City of Rochester }

I, Elfrida Reiter, City Clerk in and for said City of Rochester do hereby certify that on the 24th day of August, 1957 A.D. the accompanying plat was duly approved by the Common Council of the City of Rochester. In testimony thereof I have hereunto signed my name and affixed the seal of said City of Rochester this 30th day of Sept. 1957 A.D.

Elfrida Reiter
City Clerk

DEDICATION

We the undersigned certify that we are the sole interested parties in the tract of land described in the foregoing SURVEYOR'S CERTIFICATE which is written on the plat on which this instrument is written, that we have caused the same to be surveyed and platted into streets, blocks, and lots under the name of ELTON HILLS FIRST REPLAT as shown by said plat, and that we do hereby dedicate to the public for public use forever the streets and avenues as shown thereon, and grant easements as shown thereon.

In the presence of:

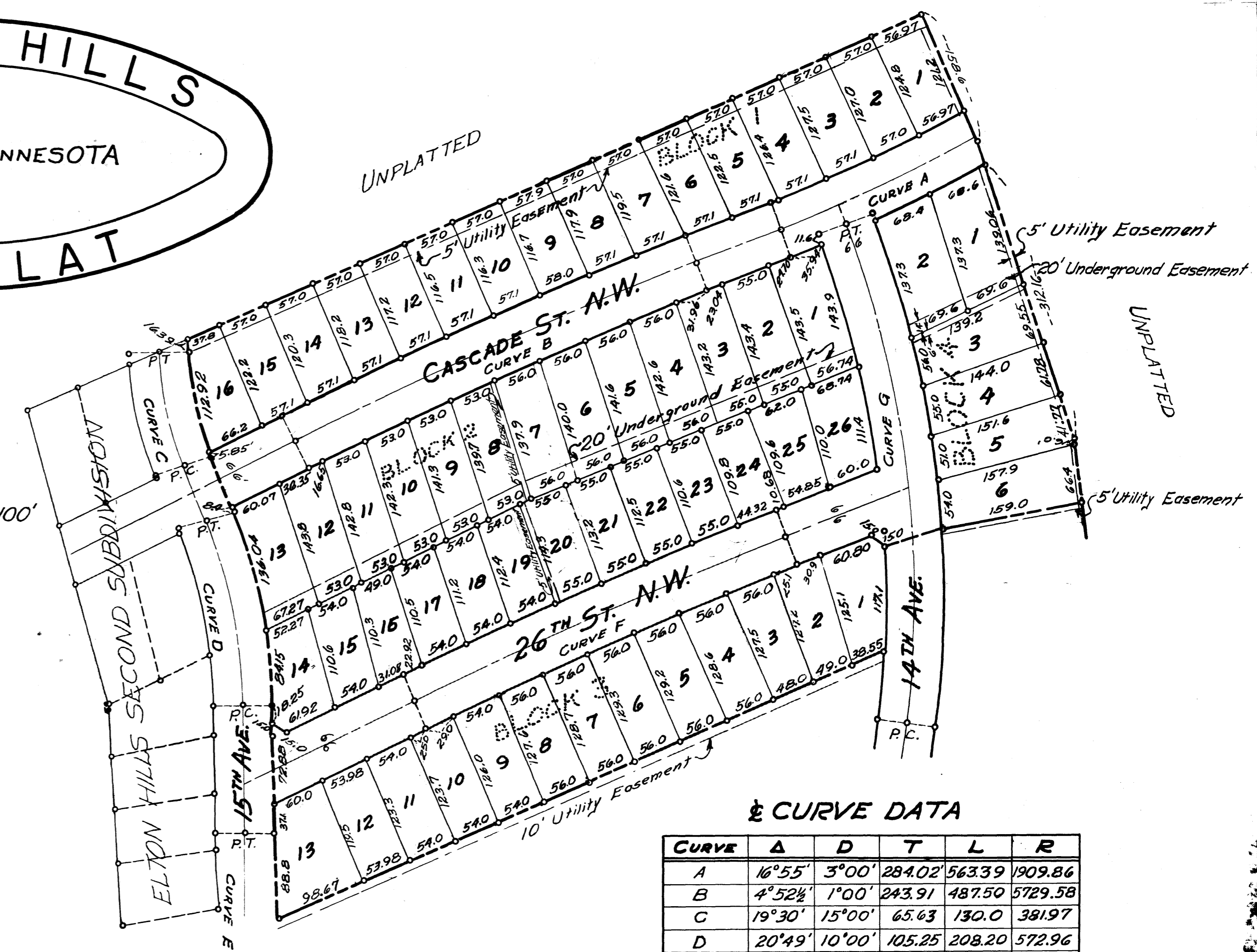
BUILDER'S LAND COMPANY

Lanthe Ballard

Stanley Guth
PRESIDENT

James G. Butler
SECRETARY

W. Barton



CURVE DATA

CURVE	Δ	D	T	L	R
A	16°55'	3°00'	284.02	563.39	1909.86
B	4°52½'	1°00'	243.91	487.50	5729.58
C	19°30'	15°00'	65.63	130.0	381.97
D	20°49'	10°00'	105.25	208.20	572.96
E	34°11'	6°00'	293.61	569.73	954.93
F	4°28'	1°00'	223.45	446.67	5729.58
G	28°11½'	5°00'	287.75	563.83	1145.92

Underground Easement defined:
Easement for construction and maintenance of sanitary and storm sewers and rights as defined in utility easements.

Utility Easements defined:
Easements for construction and maintenance of Electric power and Telephone lines and trimming rights as necessary for said maintenance.

Taxes paid and transfer entered this 4th day of Oct. 1957 AD

Frances L. Underleak
County Auditor

Taxes for the year 1956 A.D. on the lands described within are paid.

Karl H. Posten
County Treasurer

3388

State of Minnesota } S.S.
County of Olmsted }
Filed for record this 7th day of Oct. 1957 A.D. at 8 o'clock P.M. in Book ___ of Plats on page ___

Tom Moore
Register of Deeds

State of Minnesota } S.S.
County of Hennepin }

On this 10th day of Sept. 1957 A.D. before me, a Notary Public, personally appeared Stanley Guth and James G. Butler to me personally known, who, being each duly sworn did say that they are respectively President and Secretary of the Builders Land Company, that the seal affixed to this instrument is the Corporate seal of said Corporation and that said instrument was signed and sealed in its behalf by authority of its members, and said Stanley Guth and James G. Butler acknowledged said instrument to be the free act & deed of said Corporation.

My commission expires MAR. 22, 1961.

Lanthe Ballard
Notary Public, Hennepin County, Minnesota