

**Drainage Easement Defined:**

An unobstructed easement for the operation and maintenance of water ways, both surface and underground running over, across, and under said easement.

**Utility Easement Defined:**

An unobstructed easement for the construction and maintenance of all necessary underground or surface public utilities including rights to conduct drainage and trimming on said easement.

# TIMBERIDGE REPLAT

UNPLATTED



**Surveyor's Certificate**

I hereby certify that I have surveyed and platted the property described on this plat as TIMBERIDGE REPLAT: that this is a correct representation of the survey; that all distances are correctly shown on the plat in feet and hundredths of a foot; that all monuments have been correctly placed in the ground as shown; that the outside boundary lines are correctly designated on the plat; and that there are no wet lands or public highways to be designated on said plat other than as shown thereon; and that said plat has been previously platted as Lots 3-7, Block 2, TIMBERIDGE SECOND SUBDIVISION.

*James E. Swanson*  
James E. Swanson, R.L.S.  
Minnesota Registration Number 11622

State of Minnesota  
County of Olmsted

The surveyor's certificate was subscribed and sworn to before me, a Notary Public, this 3rd day of JANUARY, 1985.

*William E. Tontzon*  
Notary Public, Olmsted County, Minnesota  
MY COM. EXPIRES AUG 4, 1989

My Commission expires

County Surveyor

I certify that this plat has been checked mathematically and that the plat conforms to the applicable platting laws, this 7th day of JANUARY, 1985.

*Roger W. Brand*  
Olmsted County Surveyor

County Engineer

Approved this 4th day of Feb, 1985, by Olmsted County Engineer.

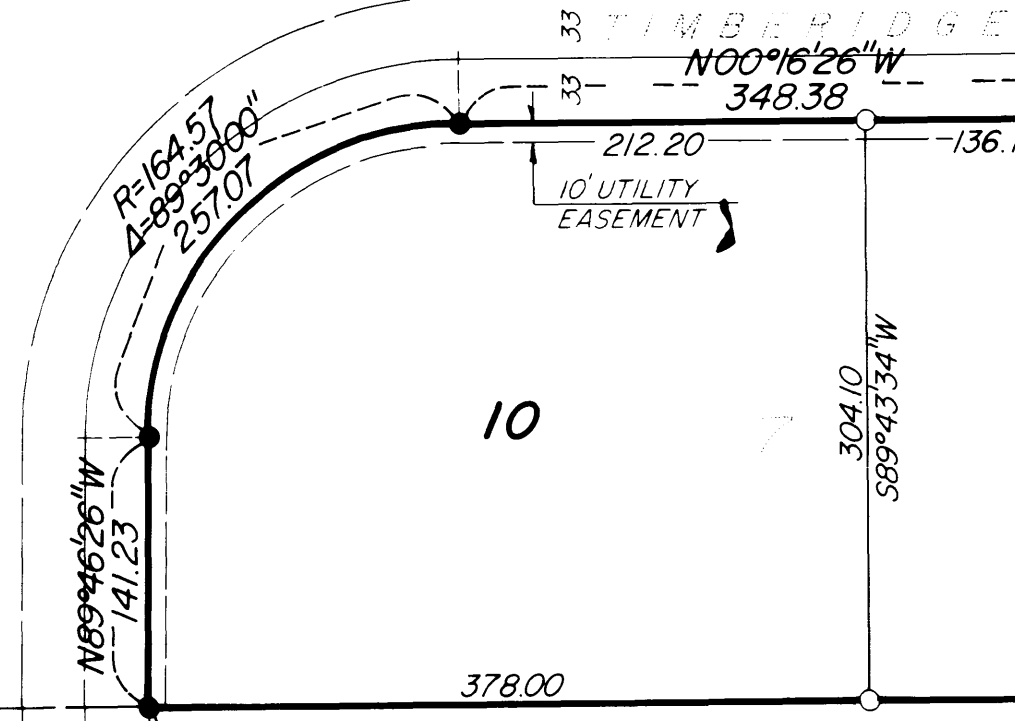
*J.K. Dolan*  
J.K. Dolan, County Engineer

County Board

State of Minnesota  
County of Olmsted

I do hereby certify that the accompanying plat was duly approved by the Olmsted County Board of Commissioners at a meeting held on the 1st day of February, 1985. In testimony whereof I have signed my name and affixed the seal of said County this 13th day of February, 1985.

*Joel Westra, Deputy*  
Olmsted County Auditor



**Planning Commission**

We, the members of the Olmsted County Planning Advisory Commission, do hereby certify that we have examined the plat as shown, and find that it conforms to the provisions of the Subdivision Ordinance of Olmsted County.

*Quane Kuelmin*  
Commission Chairman

Township Board

The Township Board of Supervisors of Marion Township, Olmsted County, do hereby certify that we have approved the accompanying plat. In testimony whereof, we have signed our names this 11 day of Jan, 1985.

*Mary Blomgren* Board Chairman  
*Janet Lottmann* Town Clerk

**County Board of Health**

The Olmsted County Board of Health has approved this plat for water supply and sewage disposal system.

*Richard Peter*  
Supervisor, Division of Environmental Health, Olmsted County Health Department

**Tax Statement**

Taxes due and payable for the year 1985 have been paid.

*Kathryn Weatherly, Deputy*  
Olmsted County Treasurer

Date Feb 13, 1985

No delinquent taxes due and transfer entered this 13th day of February, 1985.

*Joel Westra, Deputy*  
County Auditor

County Recorder

DOCUMENT NUMBER

I hereby certify that this instrument was filed in the Office of the County Recorder for record on this 13th day of Feb, 1985, at 10:34 o'clock A.M., and was duly recorded in the Olmsted County records.

By *Leis Finstuen* County Recorder  
*Dancy Johnson* Deputy

**NOTE:**

ALL MONUMENTS SHOWN THUS: ○ ARE 5/8" I.D. CAPPED PIPES SET WITH REGISTRATION NO. 11622  
ALL MONUMENTS SHOWN THUS: ● ARE FOUND 5/8" PIPES, UNLESS OTHERWISE NOTED.

**BASIS OF BEARING SYSTEM:**  
ALL BEARINGS ARE IN RELATIONSHIP WITH THE SOUTH LINE S.W. 1/4 SEC. 15, WHICH IS ASSUMED TO BE S89°47'51"E

INSTRUMENT OF DEDICATION  
Land Norwest Bank Rochester, N.A., a National Association, mortgagee

KNOW ALL MEN BY THESE PRESENTS: That J.D. Properties, Inc., a Minnesota corporation, owner and proprietor of the following described property situated in the County of Olmsted, State of Minnesota to wit:

Lots 3, 4, 5, 6, 7, Block 2, TIMBERIDGE SECOND SUBDIVISION.

Containing 43.75 acres.

have caused the same to be surveyed and platted as TIMBERIDGE REPLAT and do hereby donate and dedicate to the public for the public use forever the thoroughfares and also dedicate the easements as shown on this plat for drainage and utility purposes only.

In witness whereof said J.D. Properties, Inc. has caused these presents to be signed by its proper officers to be hereunto affixed this 9th day of JANUARY, 1985.

*James C. Donlinger* President  
*Diane L. Donlinger* Secretary-Treasurer

State of Minnesota  
County of Olmsted

The foregoing instrument was acknowledged before me this 9th day of JANUARY, 1985, by James C. Donlinger, President, and Diane L. Donlinger, Secretary-Treasurer, officers of J.D. Properties, Inc. on behalf of the corporation.

*William E. Tontzon*  
Notary Public, Olmsted County, Minnesota

My commission expires

In witness whereof said Norwest Bank Rochester, N.A., a National Association, has caused these presents to be signed by its proper officers this 7th day of February, 1985.

*David G. Wittenberg* Vice President  
*Jody L. Bower* Com. R/E Officer

State of Minnesota  
County of Olmsted

The foregoing instrument was acknowledged before me this 7th day of February, 1985, by David G. Wittenberg, Vice President and Jody L. Bower, Com. R/E Officer, officers of Norwest Bank Rochester on behalf of the Association.

*Conrad L. Shirkaw*  
Notary Public, Olmsted County, Minnesota

My commission expires June 11, 1991

# OFFICIAL PLAT

**PREPARED BY:**  
MCGHIE & BETTS, INC.  
CONSULTING ENGINEERS  
LAND SURVEYORS  
ROCHESTER, MINNESOTA

TIMBERIDGE REPLAT