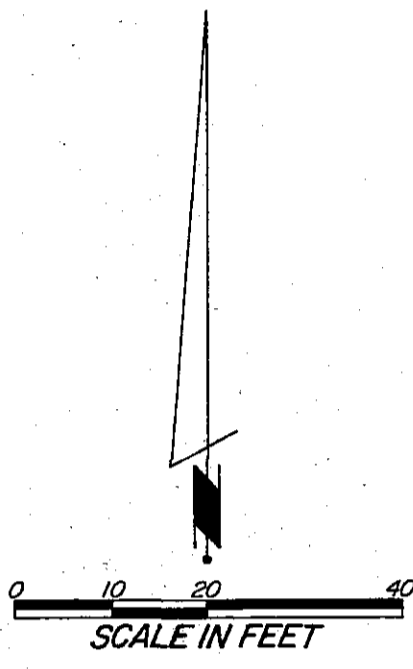
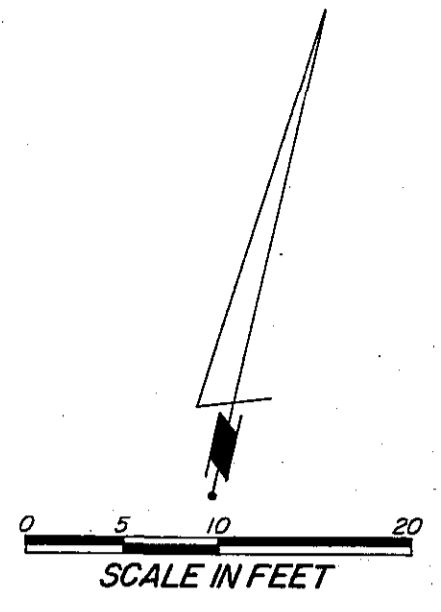
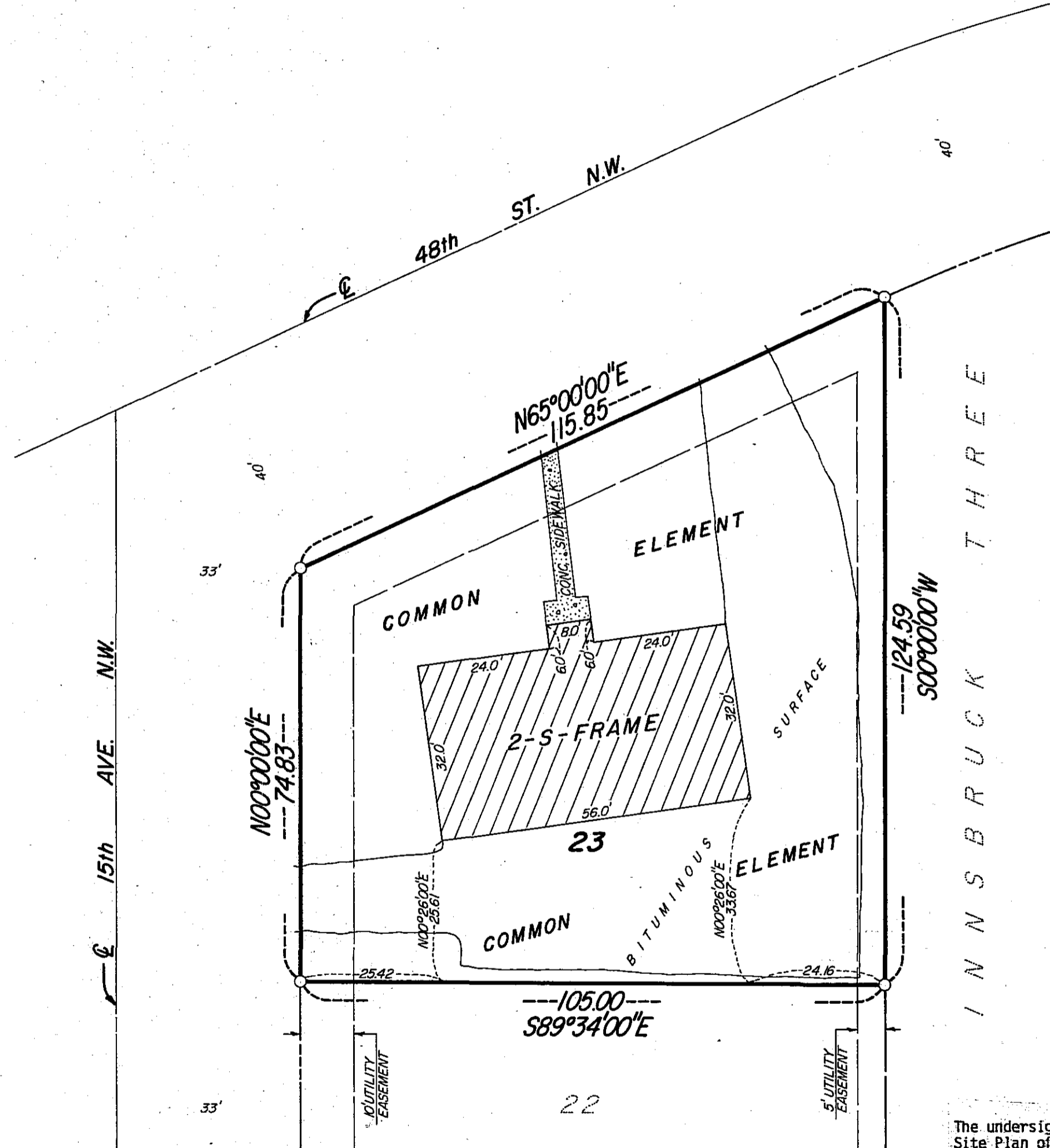


# CONDOMINIUM NUMBER 104

BRADSTOWNE SQUARE CONDOMINIUMS OF ROCHESTER INC.



NOTE:  
ALL MONUMENTS SHOWN THUS: ○  
ARE FOUND 5/8" PIPES.  
ALL BEARINGS ASSUMED.



B.M. ELEV. 1012.86  
TOP HYDRANT NUT S.W. COR.  
48th ST. N.W. & 15th AVE. N.W.

SITE PLAN

File and Document No. \_\_\_\_\_ on the \_\_\_\_\_ day of \_\_\_\_\_ A.D., 19\_\_\_\_, Olmsted County Recorder's Office.

No. 499476

to \_\_\_\_\_

Office of County Recorder,  
State of Minnesota ss.  
County of Olmsted

I hereby certify that the within ins't. was filed in this office, for record on the 11 day of Feb A.D., 1986, at 1/4 o'clock P. M., and was duly recorded in Book 21-4 of Series on page 946.

**LOIS FINSTUEN**  
County Recorder

Proofed Carolyn Ferris deputy  
Grantor \_\_\_\_\_  
Grantee \_\_\_\_\_  
Tracted \_\_\_\_\_  
Pd. \_\_\_\_\_  
Chg.

Deliver to P & R  
Address Retain

The undersigned, being first duly sworn under oath, certifies and deposes that the Site Plan of Condominium No. 104, BRADSTOWNE SQUARE CONDOMINIUMS OF ROCHESTER INC., being located upon the following described property:

Lot 23, Block 6, INNSBRUCK SIX, Rochester, Minnesota

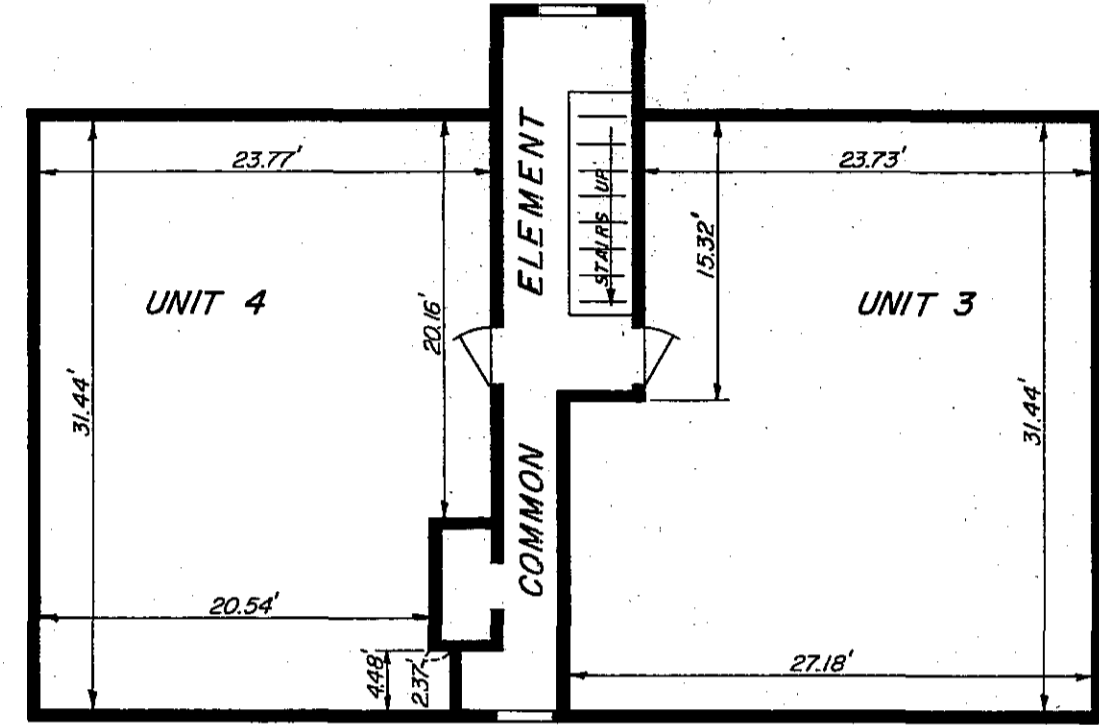
fully and accurately depicts all information required by Minnesota Statutes Section 515A.2-110. Dated this 7<sup>th</sup> day of February, 1986

James E. Swanson  
James E. Swanson  
Registered Land Surveyor  
Minnesota Registration No. 11622

State of Minnesota  
County of Olmsted

The foregoing instrument was acknowledged before me this 7<sup>th</sup> day of February, 1986, by James E. Swanson, a Registered Land Surveyor.

William E. Tointon  
Notary Public, Olmsted County, Minnesota  
My Commission Expires: \_\_\_\_\_

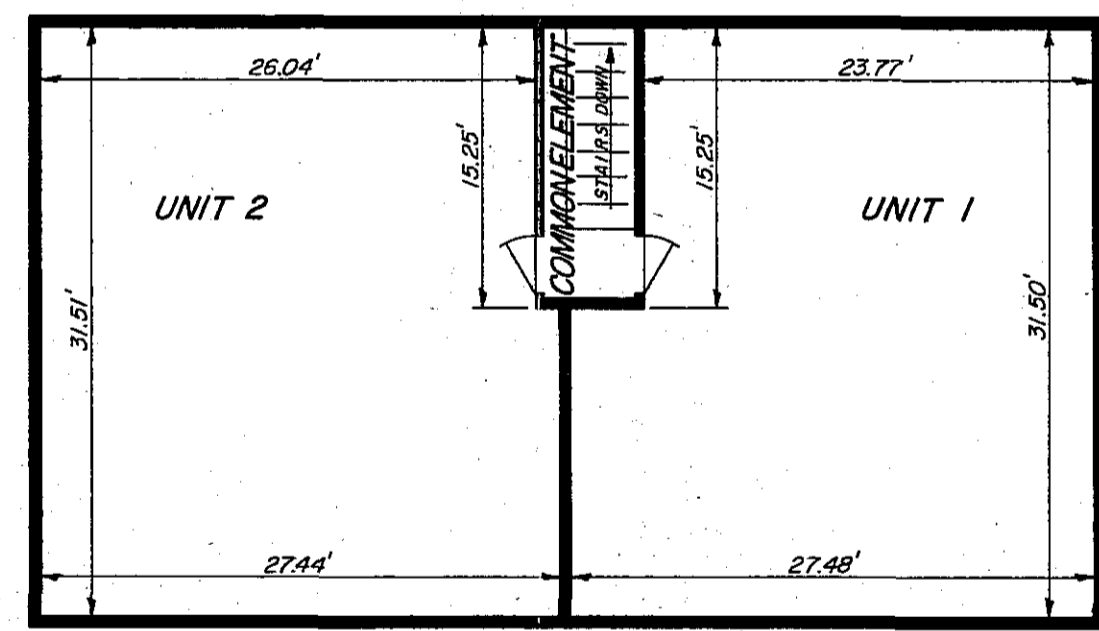


MAIN FLOOR PLAN

MAIN FLOOR PLAN

UNIT 3  
FLOOR ELEVATION= 1015.42  
FLOOR TO CEILING HEIGHT= 8.13'

UNIT 4  
FLOOR ELEVATION= 1015.42  
FLOOR TO CEILING HEIGHT= 8.13'



UPPER FLOOR PLAN

UPPER FLOOR PLAN

UNIT 1  
FLOOR ELEVATION= 1024.68  
FLOOR TO CEILING HEIGHT= 8.10'

UNIT 2  
FLOOR ELEVATION= 1024.68  
FLOOR TO CEILING HEIGHT= 8.10'

Leon F. Mucha, a Registered Professional Engineer for the State of Minnesota pursuant to Minnesota Statutes Section 515A.2-101(b) does hereby certify that all structural components and mechanical systems serving more than one unit of all buildings containing or comprising any units hereby created are substantially completed consistent with the Floor Plans for Condominium No. 104 BRADSTOWNE SQUARE CONDOMINIUMS OF ROCHESTER INC.

Dated this 7<sup>th</sup> day of Feb, 1986

Leon F. Mucha  
Leon F. Mucha  
Registered Professional Engineer  
Minnesota Registration No. 14309

State of Minnesota  
County of Olmsted

The foregoing instrument was acknowledged before me this 7<sup>th</sup> day of February, 1986, by Leon F. Mucha, a Registered Professional Engineer.

William E. Tointon  
Notary Public, Olmsted County, Minnesota  
My Commission Expires: \_\_\_\_\_

PREPARED BY:  
McGHEE & BETTS, INC.  
CONSULTING ENGINEERS  
LAND SURVEYORS  
ROCHESTER, MINNESOTA

FILE NO. 86-05