

Surveyor's Certificate

I hereby certify that I have surveyed and platted the property described on this plat as SANDY SLOPES SECOND SUBDIVISION: that this is a correct representation of the survey; that all distances are correctly shown on the plat in feet and hundredths of a foot; that all monuments have been correctly placed in the ground as shown; that the outside boundary lines are correctly designated on the plat; and that there are no wet lands or public highways to be designated on said plat other than as shown thereon.

James E. Swanson
James E. Swanson, R.L.S.
Minnesota Registration Number 11622

State of Minnesota
County of Olmsted

The Surveyor's certificate was subscribed and sworn to before me, a Notary Public, this 1st day of September, 1984.

William E. Tristram
Notary Public, Olmsted County, Minnesota

My commission expires
County Surveyor

I certify that this plat has been checked mathematically and that the plat conforms to the applicable platting laws, this 24th day of September, 1984.

Roger W. Brand
Olmsted County Surveyor

County Engineer

Approved this 24th day of September, 1984, by
Olmsted County Engineer.

J. K. Dolan
J. K. Dolan, County Engineer

County Board

State of Minnesota
County of Olmsted

I do hereby certify that the accompanying plat was duly approved by the Olmsted County Board of Commissioners at a meeting held on the 18th day of December, 1984. In testimony whereof I have signed my name and affixed the seal of said County this 18th day of December, 1984.

Maria Nelson
Maria Nelson, Deputy
Planning Commission

We, the members of the Olmsted County Planning Advisory Commission, do hereby certify that we have examined the plat as shown, and find that it conforms to the provisions of the Subdivision Ordinance of Olmsted County.

Mary Sue Snyder
Commission Chairman

Township Board

The Township Board of Supervisors of Marion Township, Olmsted County, do hereby certify that we have approved the accompanying plat. In testimony whereof, we have signed our names this 9th day of October, 1984.

Mary Blomgren
Mary Blomgren, Board Chairman
Janet Hoggmann
Janet Hoggmann, Town Clerk

County Board of Health

The Olmsted County Board of Health has approved this plat for water supply and sewage disposal system.

Richard Peter
Supervisor, Division of Environmental Health, Olmsted County Health Department

Tax Statement

Taxes due and payable for the year 1984 have been paid.

Charlene Ost
Olmsted County Treasurer

Date October 10, 1984.

No delinquent taxes due and transfer entered this 18th day of December, 1984.

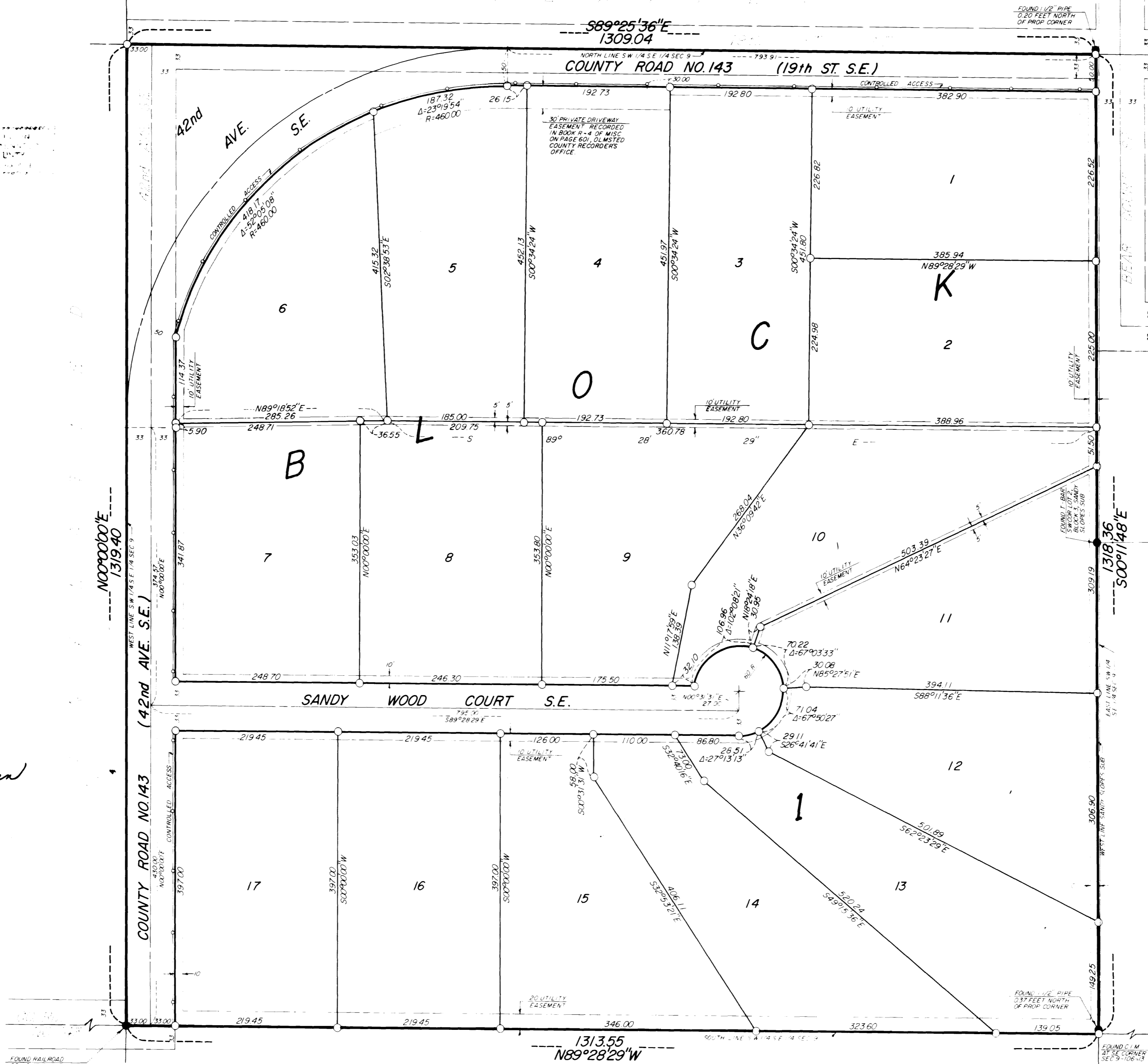
Maria Nelson
Maria Nelson, Deputy
County Recorder

DOCUMENT NUMBER

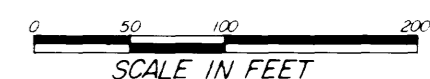
I hereby certify that this instrument was filed in the Office of the County Recorder for record on this 18th day of Dec 1984, at 11:12 o'clock A.M., and was duly recorded in the Olmsted County records.

Lois Finstuen
Lois Finstuen, Deputy
County Recorder

SANDY SLOPES SECOND SUBDIVISION



NOTE:
ALL MONUMENTS SHOWN THIS:
ARE 5/8" I.D. CAPPED PIPES SET
WITH REGISTRATION NO 11622
BASIS OF BEARING SYSTEM:
ALL BEARINGS ARE IN RELATIONSHIP
WITH THE NORTH LINE SW 1/4 SE 1/4
SEC 9, WHICH IS ASSUMED TO BE
S89°25'36" E



KNOW ALL MEN BY THESE PRESENTS: That Marblox of Minnesota, Inc., a Minnesota corporation, owner and proprietor, and Norwest Bank Rochester, N.A., a National Association, mortgagee of the following described property situated in the County of Olmsted, State of Minnesota to wit:

The Southwest Quarter of the Southeast Quarter of Section 9, Township 106 North, Range 13 West, Olmsted County, Minnesota.

have caused the same to be surveyed and platted as SANDY SLOPES SECOND SUBDIVISION and do hereby donate and dedicate to the public for the public use forever the thoroughfares and also dedicate the easements as shown on this plat for drainage and utility purposes only.

In witness whereof said Marblox of Minnesota, Inc. has caused these presents to be signed by its proper officer this 21st day of September, 1984.

Carlton Penz
Carlton Penz, President

State of Minnesota
County of Olmsted

The foregoing instrument was acknowledged before me this 21st day of September, 1984, by Carlton Penz, president of Marblox of Minnesota, Inc., on behalf of the corporation.

Doug M. Betts
Douglas N. Betts
Notary Public - Minnesota
Olmsted County
My Comm. Exp. Aug 4, 1989

My commission expires August 4, 1989.

In witness whereof said Norwest Bank Rochester, N.A., a National Association, has caused these presents to be signed by its proper officers this 21st day of Sept., 1984.

Kevin Arnold AUP
Jody L. Bower
Kevin Arnold
Jody L. Bower
Real Estate
OF, cer

State of Minnesota
County of Olmsted

The foregoing instrument was acknowledged before me this 21st day of Sept., 1984, by Kevin Arnold, and Jody L. Bower, officers of Norwest Bank Rochester on behalf of the Association.

Jean A. Gitchell
Jean A. Gitchell, Notary Public, Olmsted County, Minnesota

My commission expires 9-6-90

Utility Easement Defined
An unobstructed easement for the construction and maintenance of all necessary overhead, underground, or surface public utilities including rights to conduct drainage and trimming on said easement.

CONTROLLED ACCESS defined:
Ingress or egress to, from, or across the abutting roadway is restricted by the road authority pursuant to Minnesota State Statute 160.08.

OFFICIAL PLAT

PREPARED BY:
McGHEE & BETTS, INC.
CONSULTING ENGINEERS
LAND SURVEYORS
ROCHESTER, MINNESOTA