

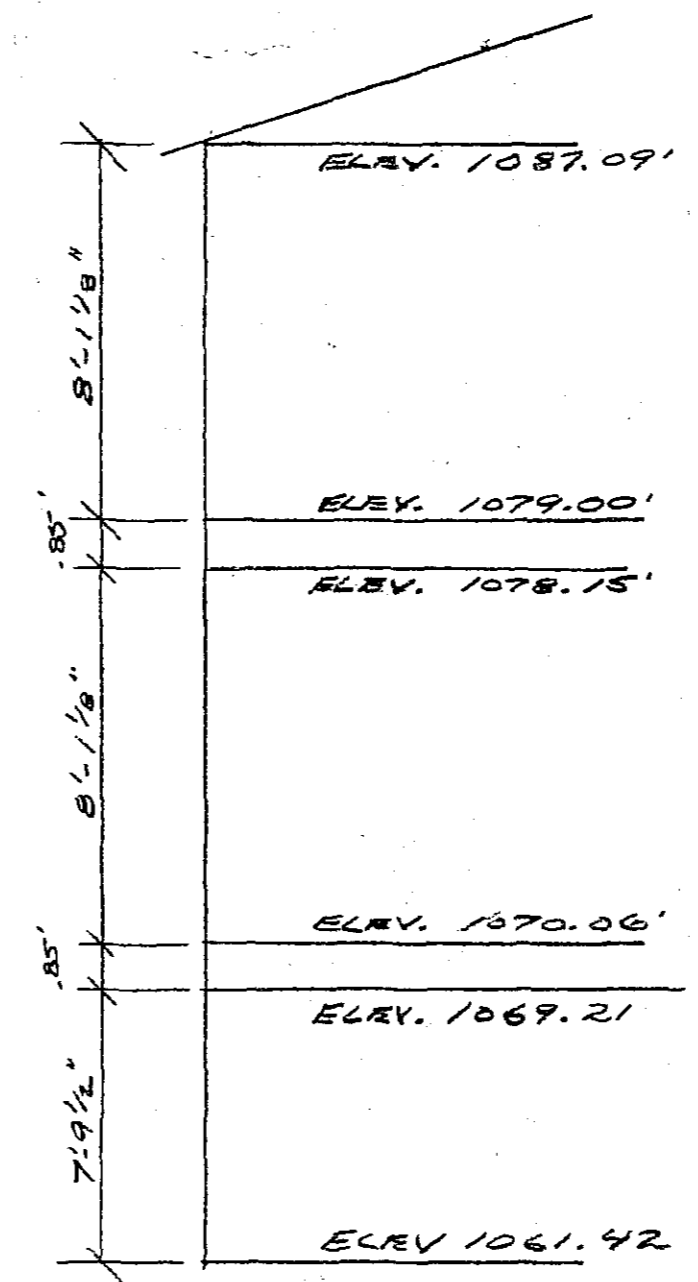
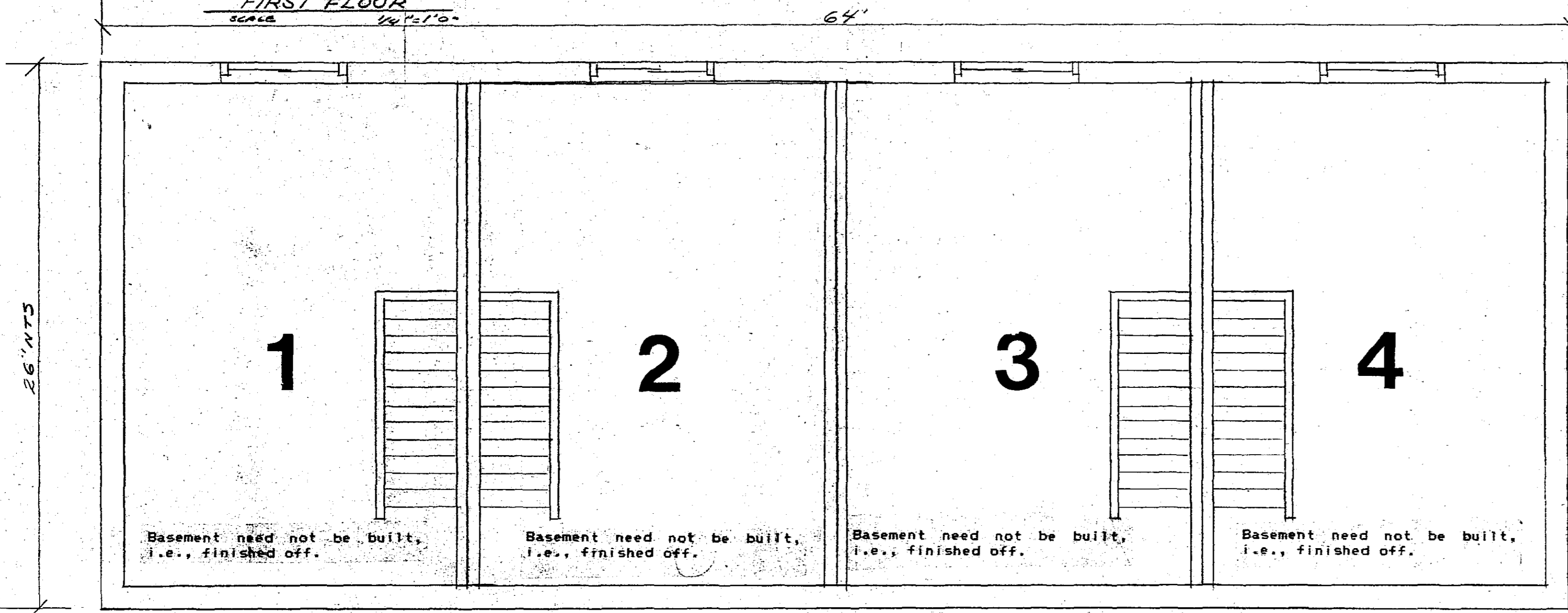
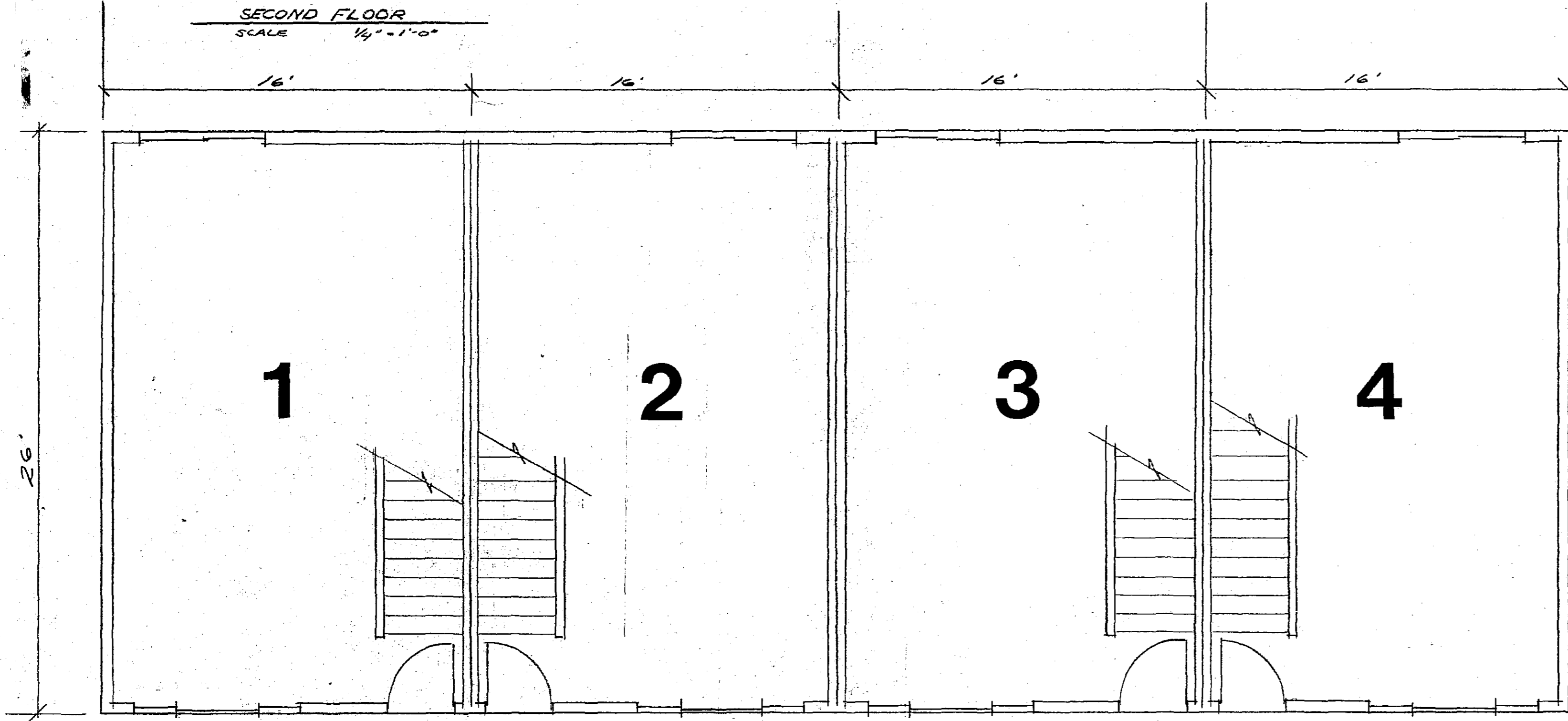
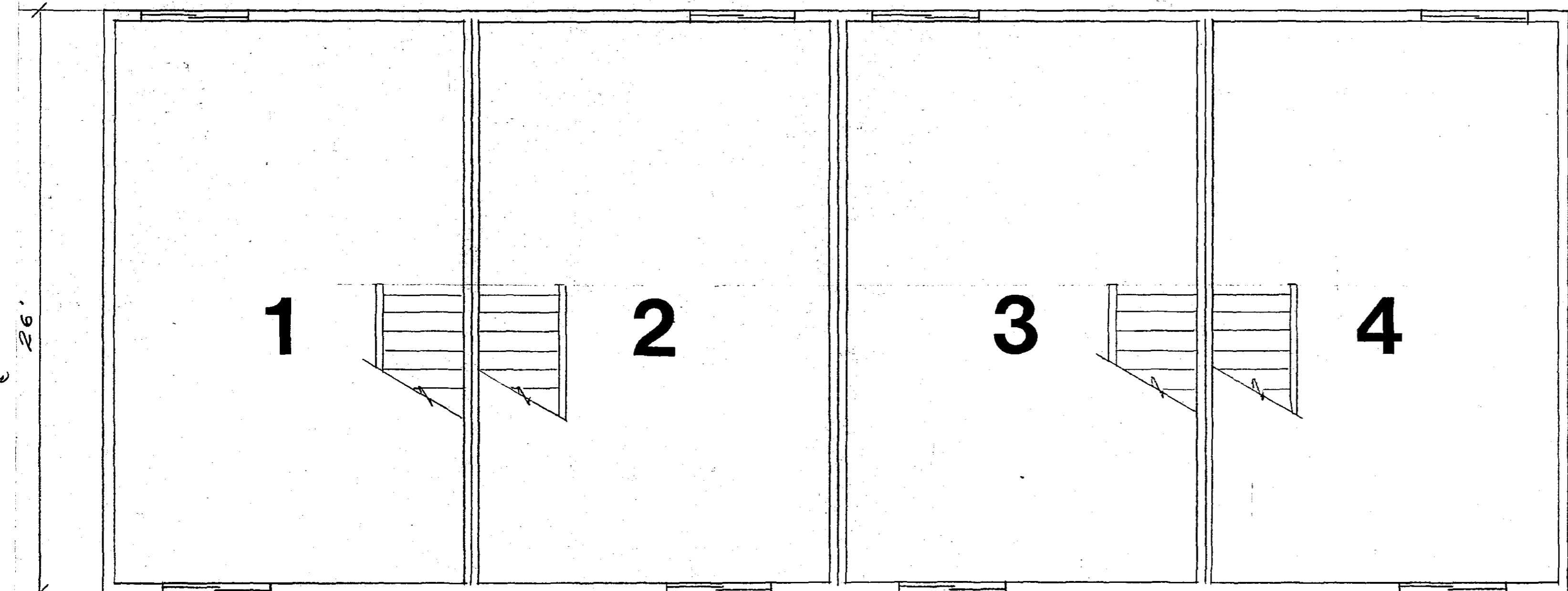
Office of County Recorder,
State of Minnesota
County of Olmsted

I hereby certify that the within inst. was filed in this office, for record on the 21 day of Sept, A.D., 1984, at 3 o'clock P. M., and was duly recorded in Book R-4 of Misc on page 713.

LOIS FINSTUEN
County Recorder
Carol M. Jensen
deputy

Proved _____
Grantor _____
Grantee _____
Tracted _____
Pd. _____
Chg. _____

Deliver to Patterson
Address Retain



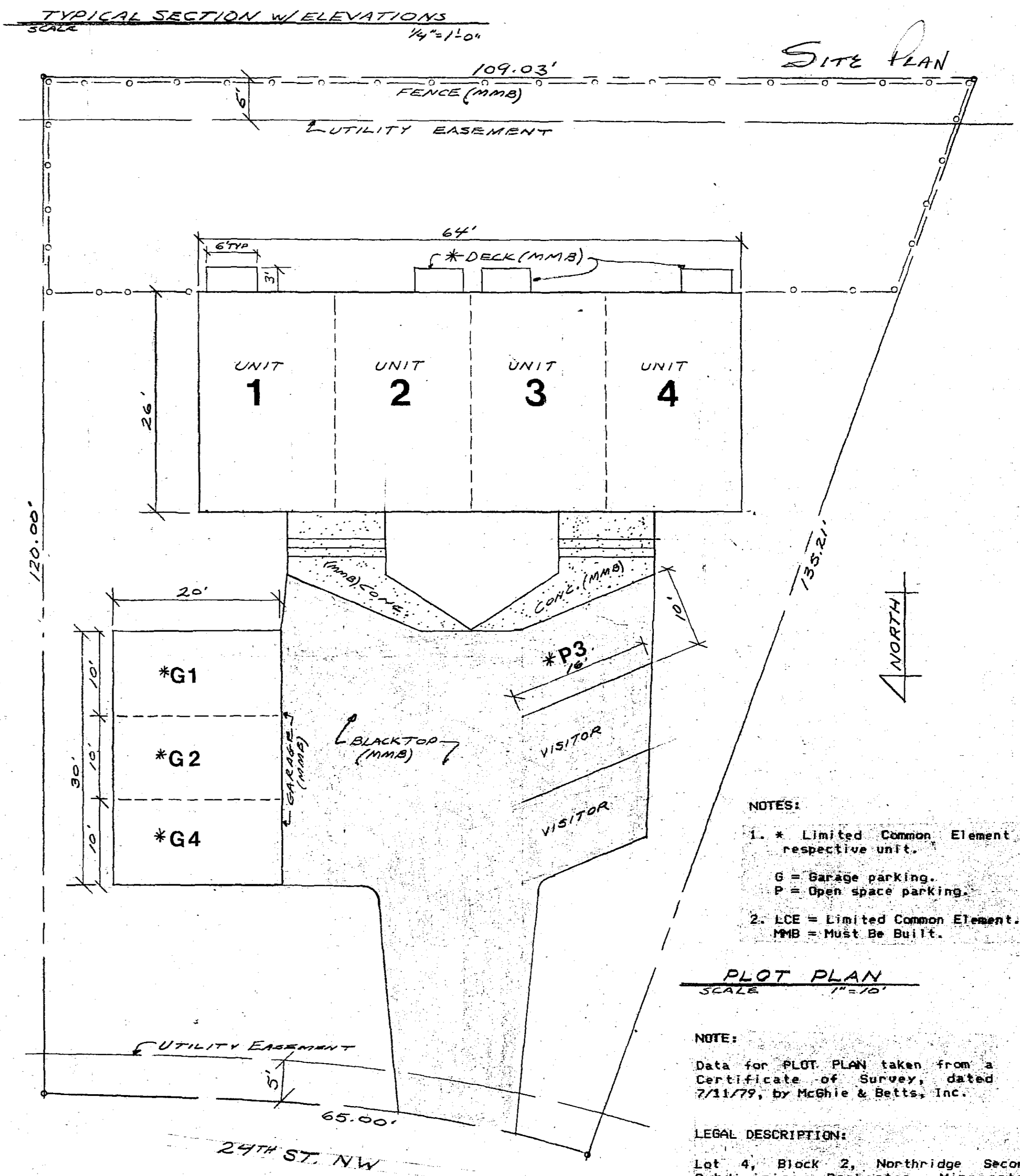
CERTIFICATE OF FLOOR PLANS
of
24th NW St. CONDOMINIUM of ROCHESTER, Inc. #94

The undersigned, being a Registered Professional Engineer, who being first duly sworn on oath, certifies and deposes that these Floor Plans, consisting of one (1) page, dated September 10, 1984, represents an accurate copy of portions of the plans of the building as filed with and approved by the City of Rochester; all accurately depict the layout, location, condominium numbers and dimensions of the condominium as built.

James R. McDonagh
JAMES R. McDONAGH, P.E.
Reg. No. E-7706
Date: September 11, 1984

Subscribed and sworn to before me this 11th day of September, 1984.

ROBERT W. PATTERSON
Notary Public, Olmsted County, Minnesota
My commission expires: May 3, 1990



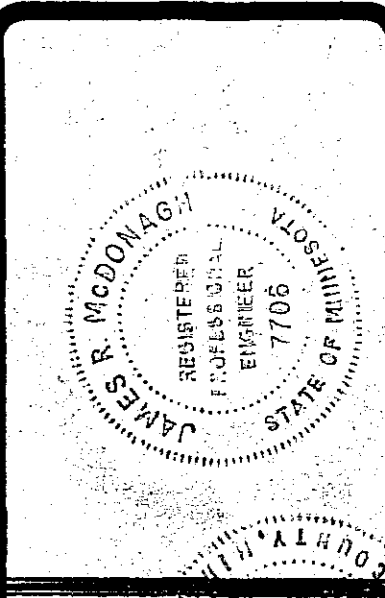
- NOTES:**
- * Limited Common Element to respective unit.
 - G = Garage parking.
 - P = Open space parking.
2. LCE = Limited Common Element.
MMB = Must Be Built.

PLOT PLAN
SCALE 1" = 10'

NOTE:
Data for PLOT PLAN taken from a Certificate of Survey, dated 7/11/79, by McGhie & Betts, Inc.

LEGAL DESCRIPTION:
Lot 4, Block 2, Northridge Second Subdivision, Rochester, Minnesota, except the East 80.00 feet thereof.

REVISIONS	BY



FLOOR PLANS, PLOT PLAN, & CERTIFICATION for Condominium of Rochester, Inc. 24th NW St. 2808 - 24th St. NW Rochester, Minnesota 55902

JAMES R. McDONAGH, P.E., Inc.
Consulting Engineer
5937 E.W. 31st Street
Rochester, Minnesota 55902
(507) 285-1066

