

415254

CERTIFICATION

The undersigned, being a registered land surveyor, certifies that this plan is an accurate copy of portions of the plans of the building as filed with and approved by the municipal governmental subdivision having jurisdiction over the issuance of permits for the construction of buildings and as built.

James E. Swanson
James E. Swanson

40

415254

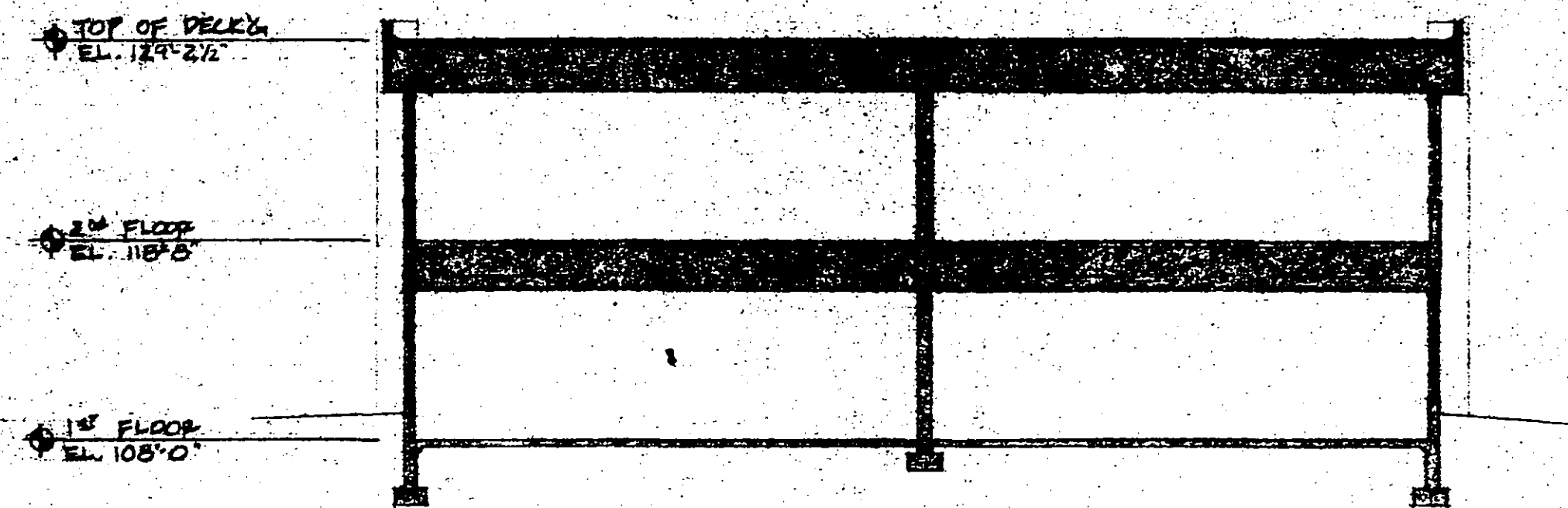
+

ABSTRACT
GRANTOR ✓
GRANTEE ✓
TRACKED ✓
PAID ✓
CHG: ✓

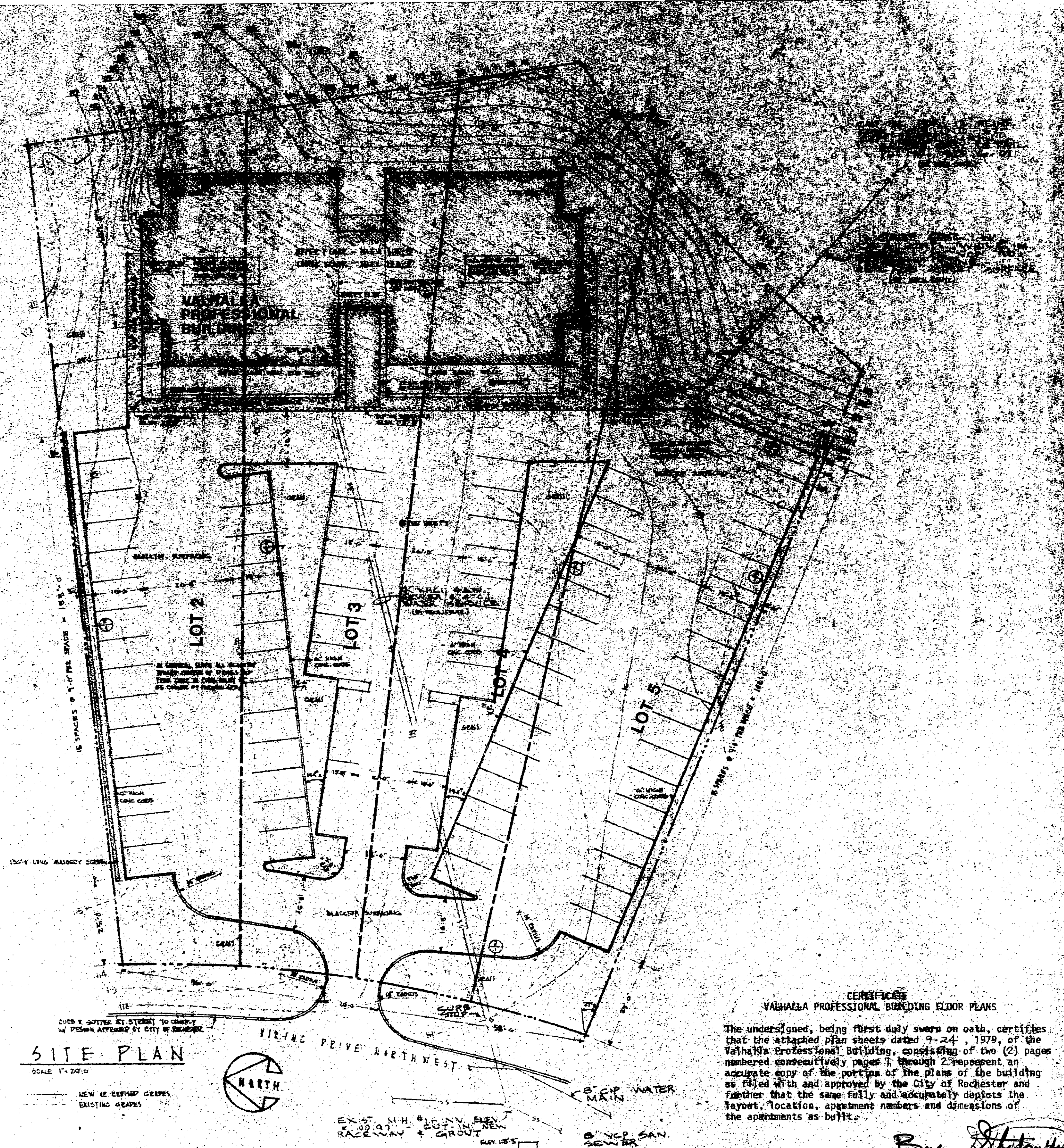
COUNTY RECORDER OFFICE } ss.
Olmsted County, Minn.
I hereby certify that the within instrument
was filed in this office for record on

JUN 21 1979
at 12:14 P
Book 11-4 page 559
LOIS FINSTUEN
County Recorder
By *Carol m. Bare* Deputy

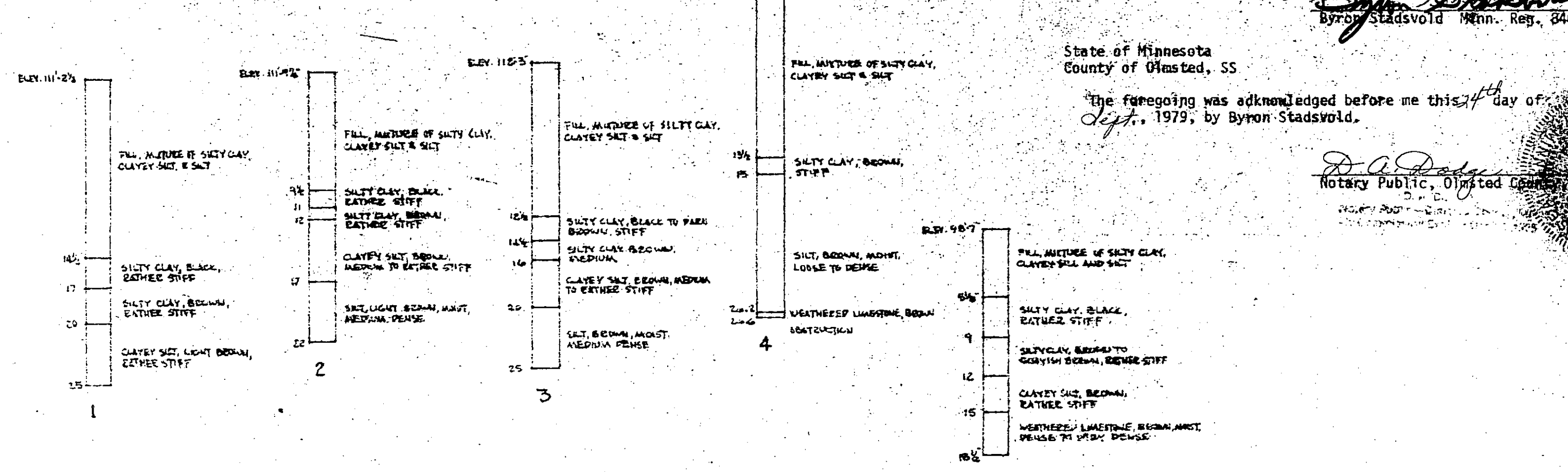
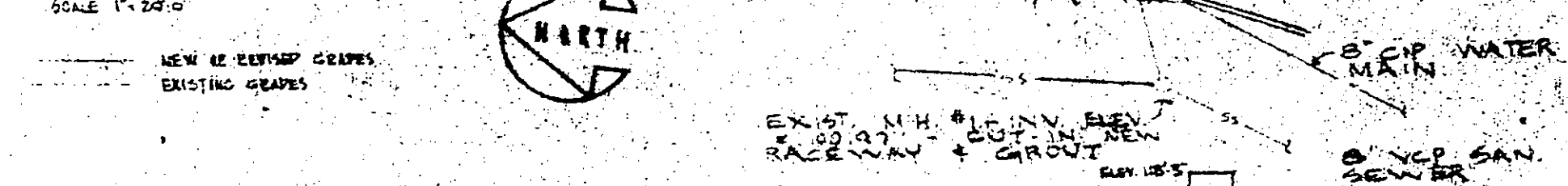
B. Patterson
Retain



TYPICAL CROSS SECTION
SCALE 1/8" = 1'-0"

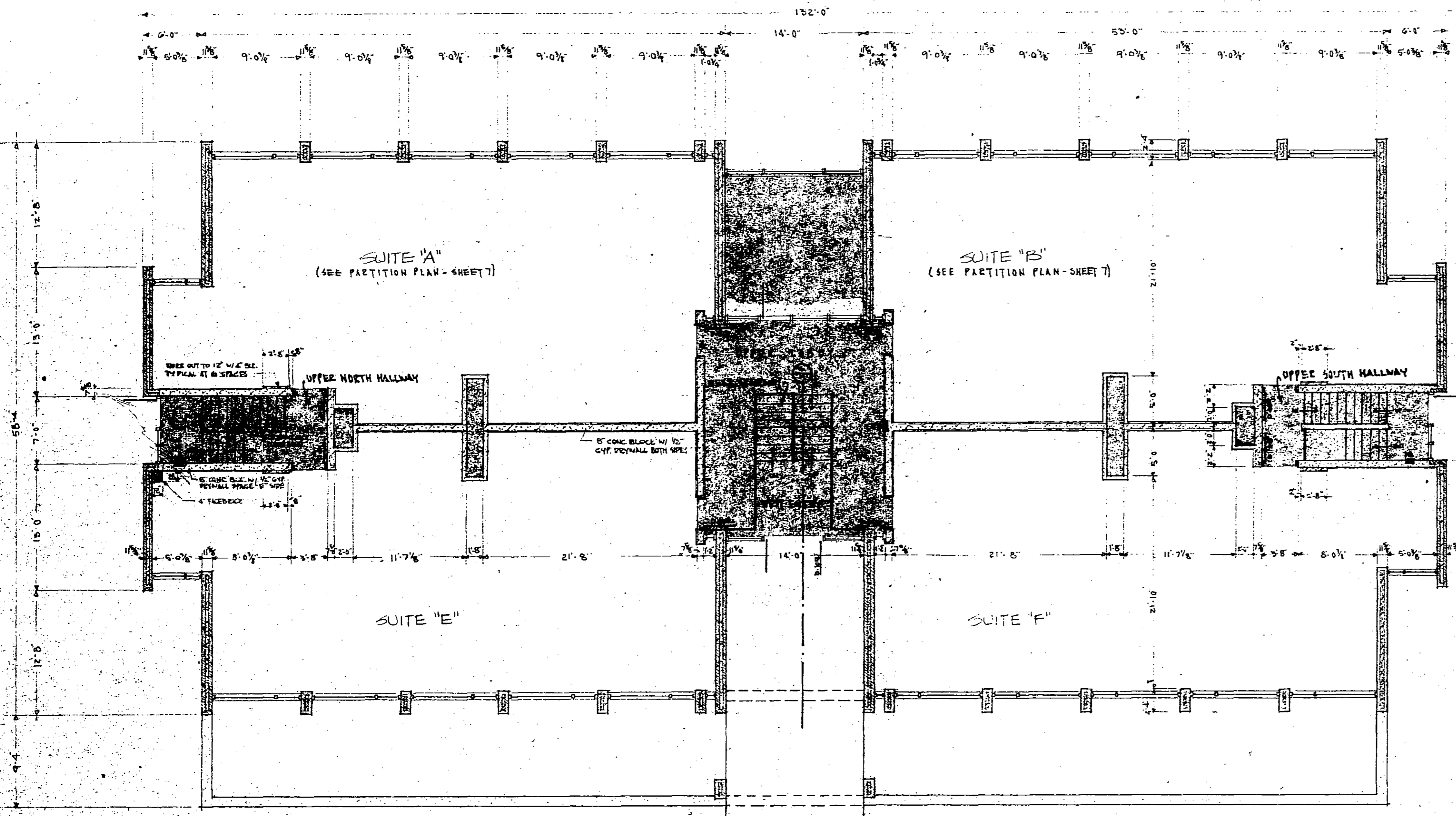


SITE PLAN
SCALE 1" = 20'-0"



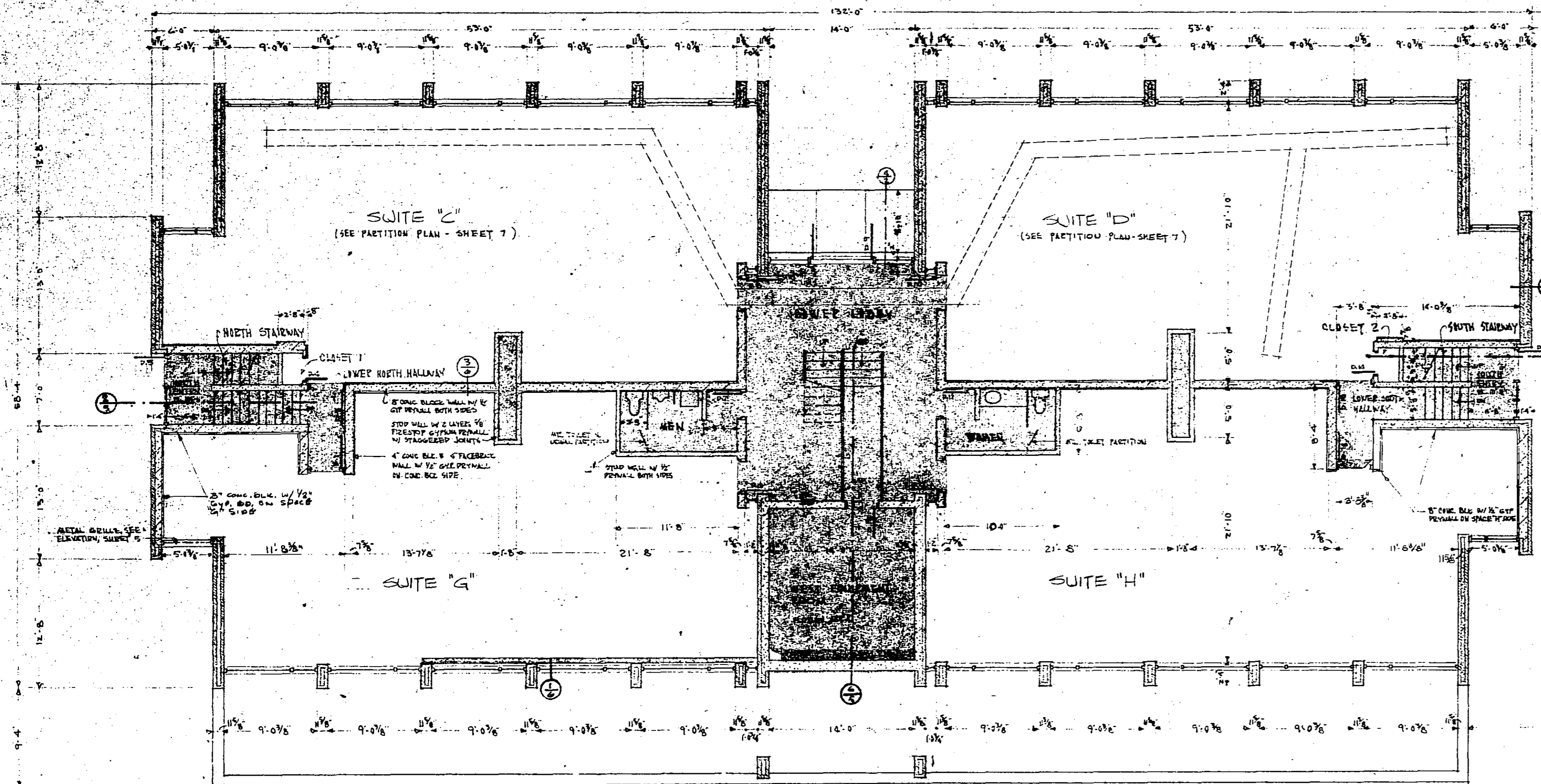
CERTIFICATE
VAILHA PROFESSIONAL BUILDING FLOOR PLANS
 The undersigned, being first duly sworn on oath, certifies that the attached plan sheets dated 9-24, 1979, of the Vailha Professional Building, consisting of two (2) pages numbered consecutively pages 1 through 2, represent an accurate copy of the portion of the plans of the building as filed with and approved by the City of Rochester and further that the same fully and accurately depicts the layout, location, apartment numbers and dimensions of the apartments as built.
 Byron Stadsvold
 Notary Public, District Court
 State of Minnesota
 County of Olmsted, SS
 The foregoing was acknowledged before me this 24th day of Sept., 1979, by Byron Stadsvold.

SET NO. _____
 W E L E V I S I O N S
 PREPARED BY ME OR UNDER MY DIRECT SUPERVISION AND THAT I AM A DULY REGISTERED ARCHITECT UNDER THE LAWS OF THE STATE OF MINNESOTA.
 REG. NO. _____
 DATE _____
 DRAWN _____
 CHECKED _____
 gg
 GJELTEW - SCHILLBERG - JOHNSON - STADSVOLD ARCHITECTURAL DESIGN GROUP INC. FOREST CITY - IOWA - 50436 - PHONE 651-562-8700 ROCHESTER - MINN. - 55914 - PHONE 612-944-7888 MINNEAPOLIS - MINN. - 55544 - PHONE 612-944-7888
VAILHA PROFESSIONAL BUILDING
ROCHESTER, MINNESOTA
 COPYRIGHT © ARCHITECTURAL DESIGN GROUP, INC. COMMISSION
 SHEET NO. _____



UPPER FLOOR PLAN
SCALE: 1/8" = 1'-0"

ROOM NAME	FLOOR		BASE		WALLS		CEILING		CEILING HEIGHT	REMARKS
	CONCRETE	TILE (1/2")	WOOD (1/2")	WOOD (1/2")	CONCRETE	CONCRETE	CONCRETE	CONCRETE		
UPPER NORTH HALLWAY									7'-11"	FORM PLASTER ENCLOSURE AROUND DOOR OPENING THROUGH WALL. SEE SECTION SHEET A-C
SPACE "A"									7'-11"	
UPPER LOBBY									7'-11"	
WEST STAIRWAY									VARIABLE	SEE STAIR DETAILS, SHEET G
WEST ENTRY									13'-2"	
SPACE "B"									7'-11"	
UPPER SOUTH HALLWAY									7'-11"	FORM PLASTER ENCLOSURE AROUND DOOR OPENING THROUGH WALL. SEE SECTION SHEET A-C
SPACE "E"									10'-0 1/2"	
SPACE "F"									11'-0"	
NORTH ENTRY									11'-0"	
NORTH STAIRWAY									VARIABLE	SEE STAIR DETAILS, SHEET G
CLOSET 1									7'-11"	FURNISH W/ 1 1/2" DEEP 1/2" X 1/2" FIC PLUMB SHEET AND 1 1/2" X 2" P.O.B.
LOWER NORTH HALLWAY									7'-11"	
NORTH EQUIPMENT ROOM									10'-0"	
SPACE "C"									7'-11"	
MEN									7'-11"	FURNISH W/ ATT. TOILET PARTITION, PAPER TOWEL HODGER, AND 1 1/2" X 2" ALUM. REINFORCED AROUND ONE-LINE LAY TO SET IN 20" FINISH COUNTERTOP W/ FORMICA TOP, 4" SPLASH & 1 1/2" EDGE
LOWER LOBBY									7'-11"	
WEST EQUIPMENT ROOM									7'-0" TO 7'-4"	
WOMEN									7'-11"	FURNISH W/ ATT. TOILET PARTITION, PAPER TOWEL HODGER, AND 1 1/2" X 2" ALUM. REINFORCED AROUND ONE-LINE LAY TO SET IN 20" FINISH COUNTERTOP W/ FORMICA TOP, 4" SPLASH & 1 1/2" EDGE
SPACE "D"									7'-11"	
CLOSET 2									7'-11"	FURNISH W/ 1 1/2" DEEP 1/2" X 1/2" FIC PLUMB SHEET AND 1 1/2" X 2" P.O.B.
LOWER SOUTH HALLWAY									7'-11"	
SOUTH STAIRWAY									VARIABLE	SEE STAIR DETAILS, SHEET G
SOUTH ENTRY									14'-10"	
SOUTH EQUIPMENT ROOM									10'-0"	
SPACE "G"									10'-0"	
SPACE "H"									10'-0"	



LOWER FLOOR PLAN
SCALE: 1/8" = 1'-0"

AREAS

SUITE "A"	1350.5 SQ. FT.
SUITE "B"	1350.5 SQ. FT.
SUITE "C"	1375.5 SQ. FT.
SUITE "D"	1375.5 SQ. FT.
SUITE "E"	1349.5 SQ. FT.
SUITE "F"	1350.5 SQ. FT.
SUITE "G"	1245.5 SQ. FT.
SUITE "H"	1254.7 SQ. FT.

THE COMMON SPACE AREA INCLUDED. ALL THE WALLS SHOWN ON THIS SHEET PLUS THE SHADED AREA []
COMMON SPACE AREA 3453.2 SQ. FT.

DATE: 7/18/79
DRAWN BY: P. HALSEY
CHECKED BY: []
REGISTERED ARCHITECT UNDER LAWS OF THE STATE OF MINN.
No. 24600

JOHNSON STADSVOLD ARCHITECTURAL DESIGN GROUP, INC.
FOURTH CITY - IOWA - 50336 - PHONE 562-582-8700
FOURTH CITY - MINN. - 55404 - PHONE 612-944-7888
MINNEAPOLIS - MINN. - 55444 - PHONE 612-944-7888

VALHALLA PROFESSIONAL BUILDING
ROCHESTER, MINNESOTA
COMMISSION 1511
SHEET NO.