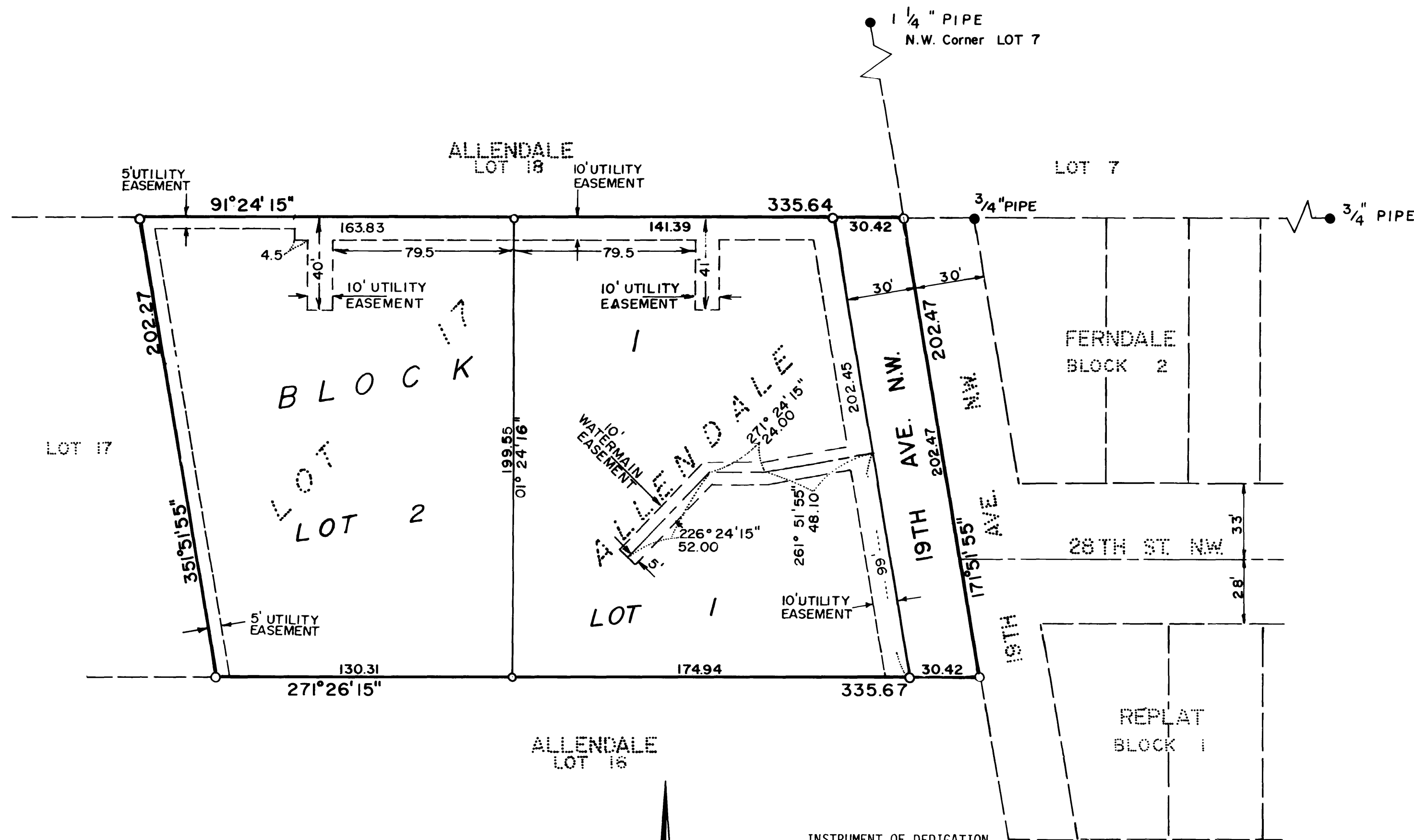


STEVENS COURT SUBDIVISION



UTILITY EASEMENT DEFINED

An unobstructed easement for the construction and maintenance of all necessary overhead, underground, or surface public utilities, including rights to conduct drainage and trimming on said easement.

Plat bearings are azimuths measured to the right from an assumed north.

WATERMAIN EASEMENT DEFINED

An unobstructed easement for the construction and maintenance of a public watermain.

INSTRUMENT OF DEDICATION

KNOW ALL MEN BY THESE PRESENTS: That Luverne E. and Ruth A. Stevens and Gary L. and Marilyn Jill Stevens, owners and proprietors of the following described property situated in the County of Olmsted, State of Minnesota, to wit:

The east 331 feet of Lot 17, Allendale, a subdivision of the Southwest Quarter of Section 22, Township 107 North, Range 14 West, according to the plat thereof on file in the County Recorder's Office, Olmsted County, Minnesota.

Have caused the same to be surveyed and platted and replatted as STEVENS COURT SUBDIVISION and do hereby donate and dedicate to the public for public use forever the thoroughfares and grant the easements as shown on this plat.

In witness whereof said Luverne E. and Ruth A. Stevens and Gary L. and Marilyn Jill Stevens have caused these presents to be signed this 7th day of September, 1984.

Luverne E. Stevens
 Ruth A. Stevens
 Gary L. Stevens
 Marilyn Jill Stevens

STATE OF MINNESOTA
 COUNTY OF OLMSTED

The foregoing instrument was acknowledged before me this 7th day of September, 1984, by Luverne E. and Ruth A. Stevens and Gary L. and Marilyn Jill Stevens.

Judith M. Cronk
 Notary Public, Olmsted County, MN
 My Commission Expires 4-2-86

COUNTY TREASURER

Taxes due and payable for the year 1984, have been paid as of this 10th day of October, 1984.

Bob Ryan
 Olmsted County Treasurer

COUNTY SURVEYOR

I certify that this plat has been checked mathematically and that the plat conforms to the applicable platting laws. Sept. 13, 1984

Roger W. Brand
 Olmsted County Surveyor

COUNTY AUDITOR

No delinquent taxes due and transfer entered this 10th day of October, 1984.

Ross Branning
 Olmsted County Auditor

COUNTY RECORDER

Document Number 276

I hereby certify that this instrument was filed in the office of the County Recorder for record on the 10 day of October, 1984, at 3 o'clock P.M. and was duly recorded in Olmsted County Records.

Lois Finney
 Olmsted County Recorder

CITY APPROVAL

State of Minnesota
 County of Olmsted
 City of Rochester

I, Carole A. Grimm, City Clerk, in and for the City of Rochester, do hereby certify that on the 6 day of August, 1984, the accompanying plat was duly approved by the Common Council of the City of Rochester. In testimony whereof, I have hereunto signed my name and affixed the Seal of said City of Rochester this 17 day of September, 1984.

Carole A. Grimm
 City Clerk

SURVEYOR'S CERTIFICATE

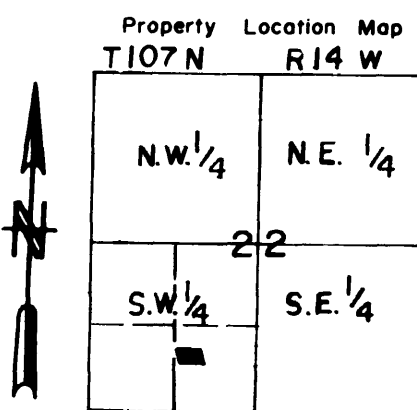
I do hereby certify that I have surveyed and platted the property described on this plat as STEVENS COURT SUBDIVISION, that this plat is a correct representation of said survey, that all distances are correctly shown on said plat in feet and hundredths of a foot, that all monuments have been correctly designated and that there are no wetlands or public highways to be designated on said plat other than as shown.

Donald R. Borcherting
 DONALD R. BORCHERTING
 Minnesota R.L.S. 10162

STATE OF MINNESOTA
 COUNTY OF OLMSTED

The foregoing Surveyor's Certificate was acknowledged before me this 6th day of September, 1984, by Donald R. Borcherting, Minnesota R.L.S. No. 10162.

Notary Public
 Notary Public, Olmsted County, MN
 My Commission Expires 4-12-86



MONUMENTS

- 1/2" Rebars
- 3/4" Iron Pipes
- Found Monuments (Pipe, Rod, Etc.)
- ⊙ No Monuments Found or Set

All monuments set have a plastic cap stamped R.L.S. 10162.

PREPARED BY
YAGGY ASSOCIATES, INC.
 CONSULTING ENGINEERS ■ PLANNERS ■ SURVEYORS
 ROCHESTER, MINNESOTA ■ MASON CITY, IOWA