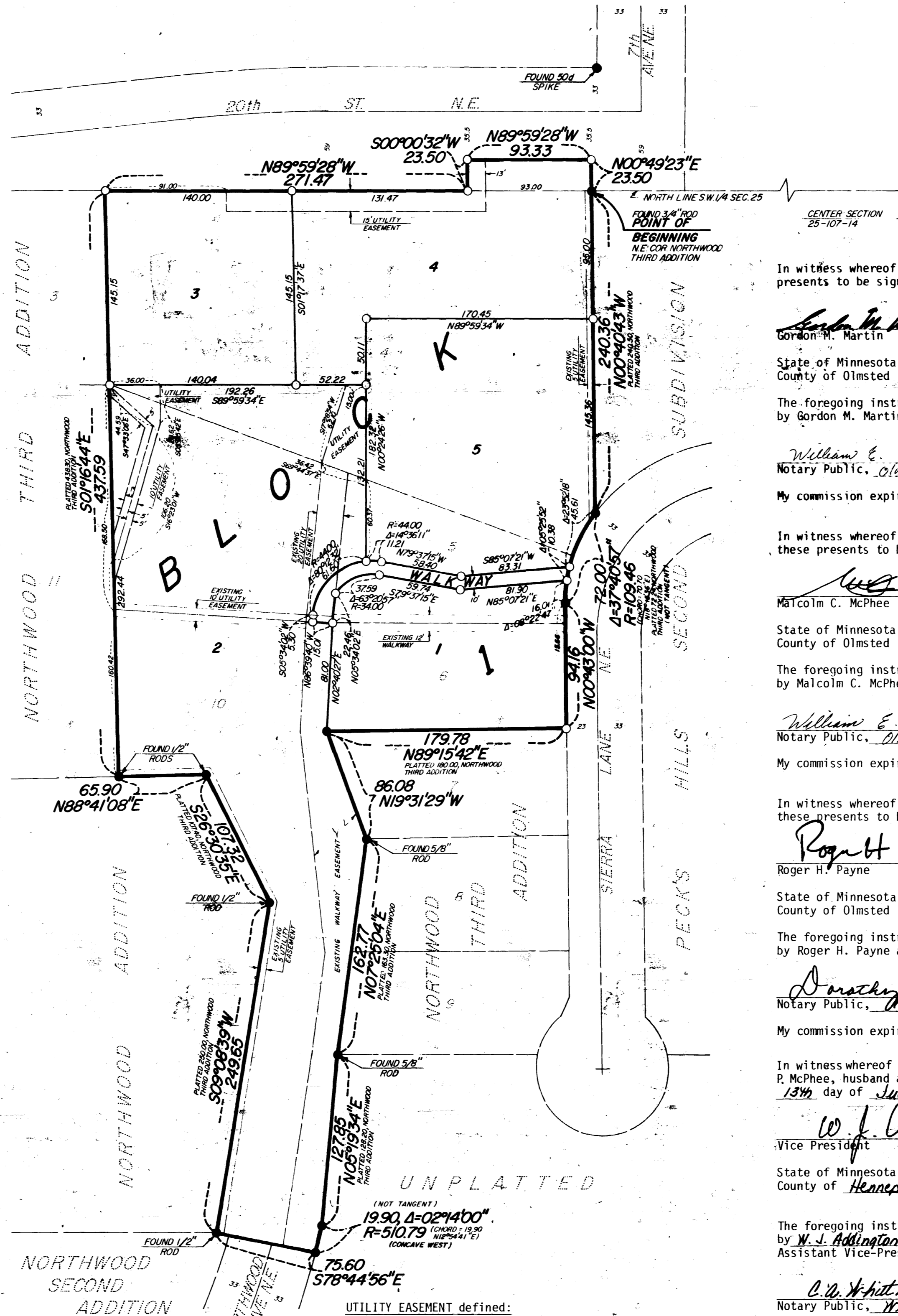


# NORTHWOOD THIRD REPLAT

NOTE:  
 ALL MONUMENTS SHOWN THIS: ○  
 ARE 5/8" I.D. CAPPED PIPES SET  
 WITH REGISTRATION NO. 11622.  
 ALL MONUMENTS SHOWN THIS: ●  
 ARE FOUND 5/8" PIPES, UNLESS  
 OTHERWISE NOTED.  
 BASIS OF BEARING SYSTEM:  
 ALL BEARINGS ARE IN RELATIONSHIP  
 WITH THE NORTH LINE SW 1/4 SEC. 25,  
 WHICH IS ASSUMED TO BE N89°59'28" W.

SCALE IN FEET  
 0 30 60 120



Instrument of Dedication  
 KNOW ALL MEN BY THESE PRESENTS: That Gordon M. Martin and Neva M. Martin, husband and wife, and Malcolm C. McPhee and Corinne P. McPhee, husband and wife, and Roger H. Payne and Jacqueline K. Payne, husband and wife, and owners and proprietors and F & M Marquette National Bank, a National Banking Association, mortgagee of the following described property situated in the City of Rochester, State of Minnesota to wit:

Lots 4, 5, 6, and 10, NORTHWOOD THIRD ADDITION, also that part of the vacated 20th Street Northeast as platted in Northern Heights Fifth Subdivision, Rochester, Minnesota, described as follows:

Beginning at the northeast corner of Northwood Third Addition; thence West, assumed bearing, along the north line of said Northwood Third Addition, 93.00 feet; thence North, 23.50 feet; thence East to the intersection with a line drawn from the southeast corner of Lot 1, Block 2, of said Northern Heights Fifth Subdivision to the northeast corner of Northwood Third Addition; thence southerly along said line to the point of beginning.

have caused the same to be surveyed and platted as NORTHWOOD THIRD REPLAT and do hereby donate and dedicate to the public for the public use forever the walkway and also dedicate the easements as shown on this plat for drainage and utility purposes only.

In witness whereof said Gordon M. Martin and Neva M. Martin, husband and wife, have caused these presents to be signed this 10<sup>th</sup> day of July, 1984.

*Gordon M. Martin*  
 Gordon M. Martin  
*Neva M. Martin*  
 Neva M. Martin

State of Minnesota  
 County of Olmsted

The foregoing instrument was acknowledged before me this 10<sup>th</sup> day of July, 1984 by Gordon M. Martin and Neva M. Martin, husband and wife.

*William E. Tointon*  
 Notary Public, Olmsted County, Minnesota

My commission expires  
 WILLIAM E. TOINTON  
 NOTARY PUBLIC - MINNESOTA  
 OLMDSTED COUNTY  
 MY COMM. EXP. AUG. 4, 1989

In witness whereof said Malcolm C. McPhee and Corinne P. McPhee, husband and wife, have caused these presents to be signed this 10<sup>th</sup> day of July, 1984.

*Malcolm C. McPhee*  
 Malcolm C. McPhee  
*Corinne P. McPhee*  
 Corinne P. McPhee

State of Minnesota  
 County of Olmsted

The foregoing instrument was acknowledged before me this 10<sup>th</sup> day of July, 1984 by Malcolm C. McPhee and Corinne P. McPhee, husband and wife.

*William E. Tointon*  
 Notary Public, Olmsted County, Minnesota

My commission expires  
 WILLIAM E. TOINTON  
 NOTARY PUBLIC - MINNESOTA  
 OLMDSTED COUNTY  
 MY COMM. EXP. AUG. 4, 1989

In witness whereof said Roger H. Payne and Jacqueline K. Payne, husband and wife, have caused these presents to be signed this 13<sup>th</sup> day of July, 1984.

*Roger H. Payne*  
 Roger H. Payne  
*Jacqueline K. Payne*  
 Jacqueline K. Payne

State of Minnesota  
 County of Olmsted

The foregoing instrument was acknowledged before me this 13<sup>th</sup> day of July, 1984 by Roger H. Payne and Jacqueline K. Payne, husband and wife.

*Dorothy La Mere*  
 Notary Public, Hennepin County, Minnesota

My commission expires  
 DOROTHY LA MERE  
 NOTARY PUBLIC - MINNESOTA  
 HENNEPIN COUNTY  
 My Commission Expires Dec. 27, 1988

In witness whereof said F & M Marquette National Bank mortgagee for Malcolm C. McPhee and Corinne P. McPhee, husband and wife has caused these presents to be signed by its proper officers this 13<sup>th</sup> day of July, 1984.

*W. J. Addington*  
 W. J. Addington  
*Duncan G. Barr*  
 Duncan G. Barr

State of Minnesota  
 County of Hennepin

The foregoing instrument was acknowledged before me this 13<sup>th</sup> day of July, 1984, by W. J. Addington, Vice-President and Duncan G. Barr, Assistant Vice-President, officers of F & M Marquette National Bank on behalf of the association.

*C. A. Whittneben*  
 Notary Public, Wright County, Minnesota

My commission expires 11-15-85  
 C. A. WHITTNEBEN  
 NOTARY PUBLIC - MINNESOTA  
 WRIGHT COUNTY  
 My Commission Expires Nov. 15, 1985

## Surveyor's Certificate

I hereby certify that I have surveyed and platted the property described on this plat as NORTHWOOD THIRD REPLAT, that this is a correct representation of the survey; that all distances are correctly shown on the plat in feet and hundredths of a foot; that all monuments have been correctly placed in the ground as shown; that the outside boundary lines are correctly designated on the plat; and that there are no wet lands or public highways to be designated on said plat other than as shown thereon; and that said plat has been previously platted as Lots 4, 5, 6 and 10, NORTHWOOD THIRD ADDITION.

*James E. Swanson*  
 James E. Swanson, R.L.S.  
 Minnesota Registration Number 11622

State of Minnesota  
 County of Olmsted

The surveyor's certificate was subscribed and sworn to before me, a Notary Public, this 10<sup>th</sup> day of July, 1984.

*William E. Tointon*  
 Notary Public, Olmsted County, Minnesota

My commission expires  
 WILLIAM E. TOINTON  
 NOTARY PUBLIC - MINNESOTA  
 OLMDSTED COUNTY  
 MY COMM. EXP. AUG. 4, 1989

I certify that this plat has been checked mathematically and that the plat conforms to the applicable platting laws, this 11<sup>th</sup> day of July, 1984.

*Roger W. Brand*  
 Olmsted County Surveyor

County Recorder

Document Number

I hereby certify that this instrument was filed in the Office of the County Recorder for record on this 18<sup>th</sup> day of October, 1984, at 2:34 o'clock P.M., and was duly recorded in the Olmsted County records.

*Sue J. Smetana*  
 County Recorder

Deputy

City Approval

State of Minnesota  
 County of Olmsted  
 City of Rochester

I, Carol A. Grimm, City Clerk, in and for the City of Rochester, do hereby certify that on the 16<sup>th</sup> day of July, 1984, the accompanying plat was duly approved by Common Council of the City of Rochester. In testimony thereof I have hereunto signed my name and affixed the seal of said City of Rochester this 23<sup>rd</sup> day of July, 1984.

*Carol A. Grimm*  
 City Clerk

Tax Statement

Taxes due and payable for the year 1984 have been paid.

*Kathryn Weatherly*  
 Olmsted County Treasurer

Date Oct. 18, 1984

No delinquent taxes due and transfer entered this 18<sup>th</sup> day of October, 1984.

*Rose Branning*  
 Neva M. Martin, Deputy

UTILITY EASEMENT defined:  
 An unobstructed easement for the construction and maintenance of all necessary underground or surface public utilities including rights to conduct drainage and trimming on said easement.

OFFICIAL PLAT

My commission expires 11-15-85  
 C. A. WHITTNEBEN  
 NOTARY PUBLIC - MINNESOTA  
 WRIGHT COUNTY  
 My Commission Expires Nov. 15, 1985

PREPARED BY:  
 MCGHIE & BETTS, INC.  
 CONSULTING ENGINEERS  
 LAND SURVEYORS  
 ROCHESTER, MINNESOTA

NORTHWOOD THIRD REPLAT