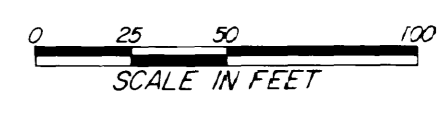


WILLOW HEIGHTS THIRD SUBDIVISION



Surveyor's Certificate

I hereby certify that I have surveyed and platted the property described on this plat as WILLOW HEIGHTS THIRD SUBDIVISION, that this is a correct representation of the survey; that all distances are correctly shown on the plat in feet and hundredths of a foot; that all monuments have been correctly placed in the ground as shown; that the outside boundary lines are correctly designated on the plat; and that there are no wet lands or public highways to be designated on said plat other than as shown thereon.

James E. Swanson
James E. Swanson, R.L.S.
Minnesota Registration Number 11622

State of Minnesota
County of Olmsted
The surveyor's certificate was subscribed and sworn to before me, a Notary Public, this 1st day of August of 1984.

William E. Tointon
WILLIAM E. TOINTON
NOTARY PUBLIC - MINNESOTA
OLMSTED COUNTY
MY COMM. EXP. AUG. 4, 1989
Notary Public, Olmsted County, Minnesota

My commission expires

County Surveyor

I certify that this plat has been checked mathematically and that the plat conforms to the applicable platting laws, this 1st day of August, 1984.

Roger W. Brand
Olmsted County Surveyor

County Recorder

Document Number

I hereby certify that this instrument was filed in the Office of the County Recorder for record on this 27 day of Sept., 1984, at 5 o'clock P.M., and was duly recorded in the Olmsted County records.

By *Law J. Gustum*
County Recorder

Deputy

City Approval

State of Minnesota
County of Olmsted
City of Rochester

I, Gayle A. Grimm, City Clerk in and for the City of Rochester, do hereby certify that on the 20 day of August, 1984, the accompanying plat was duly approved by Common Council of the City of Rochester. In testimony thereof I have hereunto signed my name and affixed the seal of said City of Rochester this 20 day of August, 1984.

Gayle A. Grimm
City Clerk

Tax Statement

Taxes due and payable for the year 1984 have been paid.

Charlene A. East
Olmsted County Treasurer

Date September 27, 1984

No delinquent taxes due and transfer entered this 27 day of September, 1984.

Rose Branning
County Auditor
Melva Nelson, Deputy

NOTE:
ALL MONUMENTS SHOWN THUS: ○
ARE 5/8" I.D. CAPPED PIPES SET
WITH REGISTRATION NO. 11622.

BASIS OF BEARING SYSTEM:
ALL BEARINGS ARE IN RELATIONSHIP
WITH THE NORTH LINE S.W. 1/4 SEC. 23,
WHICH IS ASSUMED TO BE S89°45'11"E

Instrument of Dedication

KNOW ALL MEN BY THESE PRESENTS: That Rochester Block and Supply Company, Inc., a Minnesota corporation, owners and proprietors of the following described property situated in the City of Rochester, State of Minnesota to wit:

That part of the Southwest Quarter of Section 23, Township 106 North, Range 14 West, Olmsted County, Minnesota, described as follows:

Beginning at the northwest corner of said Southwest Quarter; thence South 89 degrees 45 minutes 11 seconds East, assumed bearing, along the north line of said Southwest Quarter, a distance of 207.87 feet to the northwest corner of said WILLOW HEIGHTS SECOND SUBDIVISION, (the next 6 courses are along the westerly and southerly lines of said Subdivision); thence South 19 degrees 00 minutes 11 seconds East, 252.19 feet; thence South 70 degrees 59 minutes 49 seconds West, 29.08 feet; thence South 19 degrees 00 minutes 11 seconds East, 43.32 feet; thence South 00 degrees 07 minutes 02 seconds East, 205.67 feet to the southwest corner of Lot 1, Block 5, of said subdivision for a point of beginning; thence North 89 degrees 52 minutes 58 seconds East, along the south line of said Lot 3 and its easterly extension, 166.00 feet to the west line of Lot 1, Block 5, in said subdivision; thence South 00 degrees 07 minutes 02 seconds East, along the west line of said Lot 1, Block 5 and its southerly extension, 222.00 feet; thence North 89 degrees 52 minutes 58 seconds East, 130.00 feet; thence South 00 degrees 07 minutes 02 seconds East, 268.00 feet; thence South 89 degrees 52 minutes 58 seconds West, 135.00 feet; thence South 00 degrees 07 minutes 02 seconds East, 100.00 feet; thence North 89 degrees 52 minutes 58 seconds East, 135.00 feet; thence South 00 degrees 07 minutes 02 seconds East, 222.00 feet; thence South 89 degrees 52 minutes 58 seconds West, 191.00 feet; thence North 00 degrees 07 minutes 02 seconds West, 14.00 feet; thence South 89 degrees 52 minutes 58 seconds West, 105.00 feet; thence North 00 degrees 07 minutes 02 seconds West, 798.00 feet to the point of beginning.

Containing 4.51 acres more or less.

have caused the same to be surveyed and platted as WILLOW HEIGHTS THIRD SUBDIVISION and do hereby donate and dedicate to the public, for the public use forever the thoroughfare and also dedicate the easements as shown on this plat for drainage and utility purposes only.

In witness whereof said Rochester Block and Supply Company, Inc. has caused these presents to be signed this 2nd day of August, 1984.

Lowell H. Penz
Lowell H. Penz - President

State of Minnesota
County of Olmsted

The foregoing instrument was acknowledged before me this 2nd day of August, 1984, by Lowell H. Penz, President of Rochester Block and Supply Company, Inc., on behalf of the corporation.

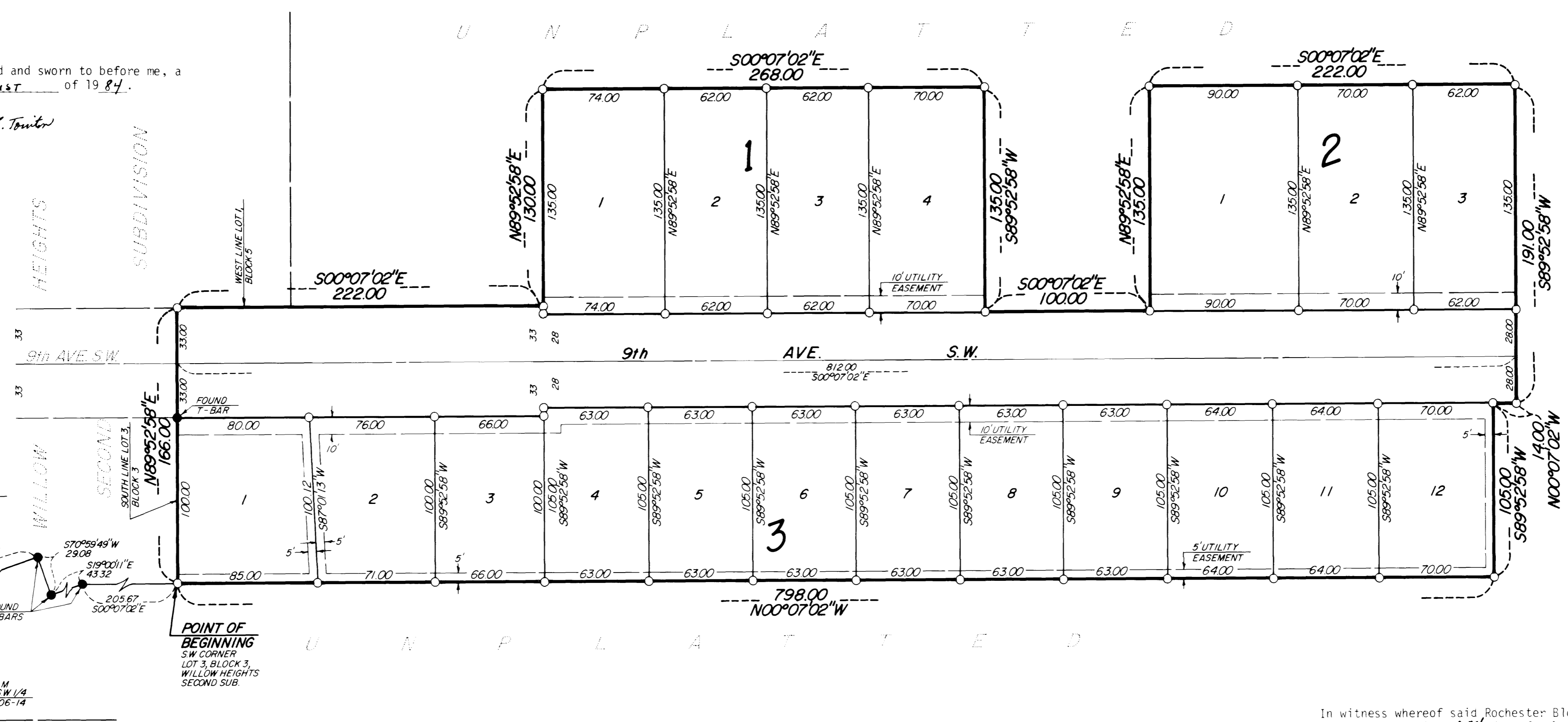
William E. Tointon
Notary Public, Olmsted County, Minnesota

My commission expires

William E. Tointon
WILLIAM E. TOINTON
NOTARY PUBLIC - MINNESOTA
OLMSTED COUNTY
MY COMM. EXP. AUG. 4, 1989

UTILITY EASEMENT defined:

An unobstructed easement for the construction and maintenance of all necessary underground or surface public utilities including rights to conduct drainage and trimming on said easement.



OFFICIAL PLAT PREPARED BY:
MCGHIE & BETTS, INC.
CONSULTING ENGINEERS
LAND SURVEYORS
ROCHESTER, MINNESOTA