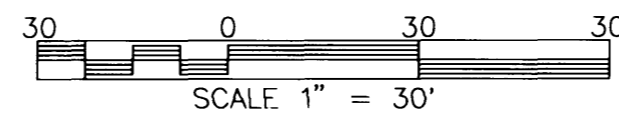
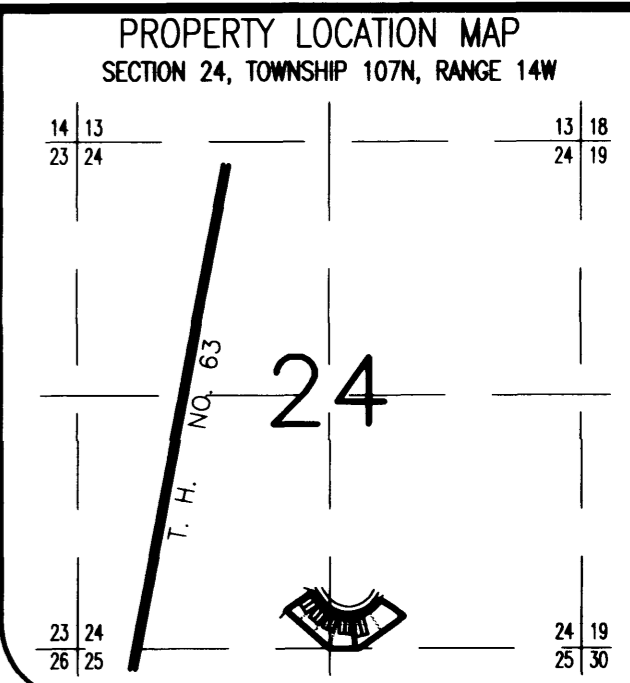


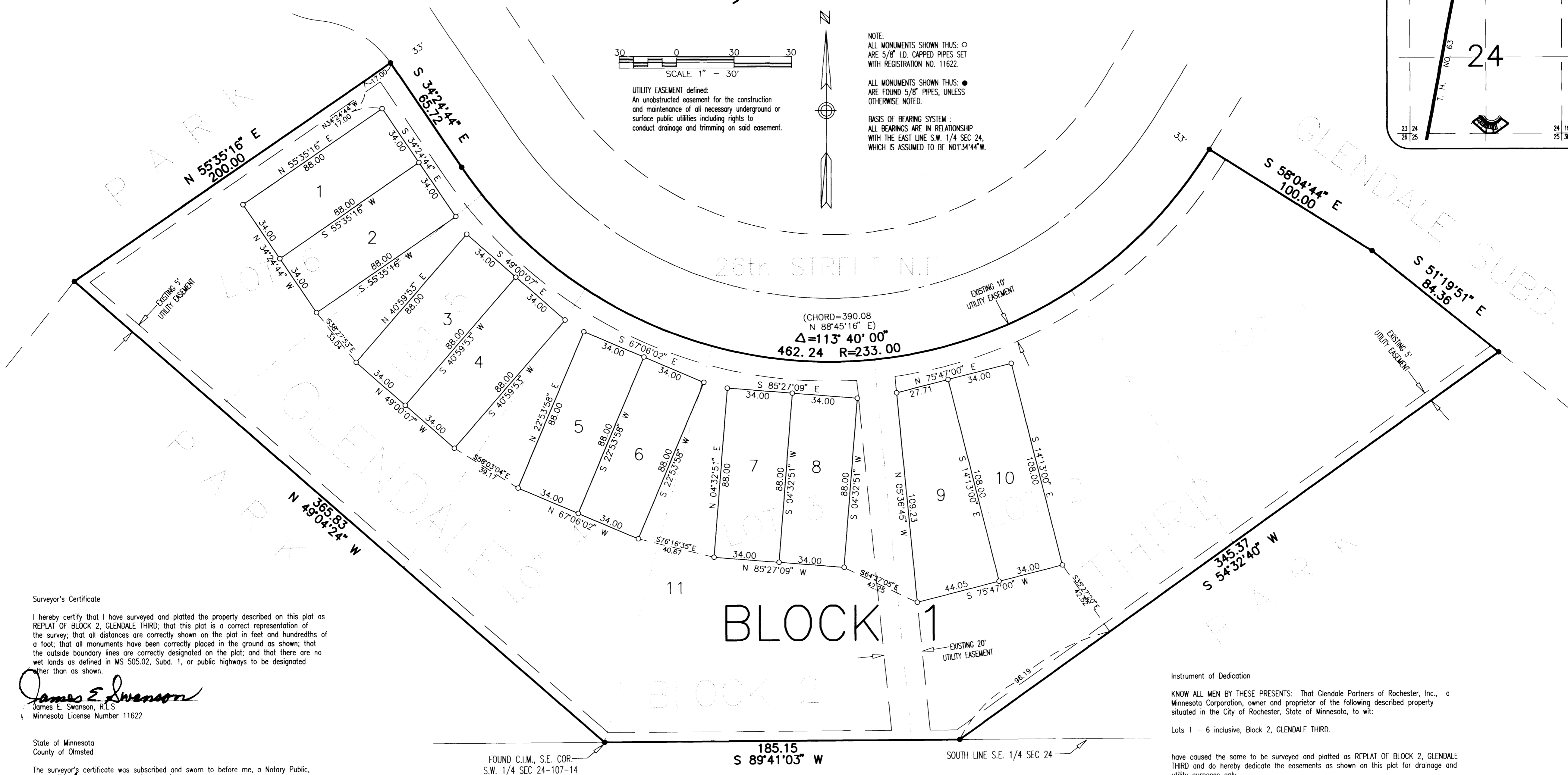
# REPLAT OF BLOCK 2, GLENDALE THIRD



UTILITY EASEMENT defined:  
An unobstructed easement for the construction and maintenance of all necessary underground or surface public utilities including rights to conduct drainage and trimming on said easement.



NOTE:  
ALL MONUMENTS SHOWN THUS: ○  
ARE 5/8" I.D. CAPPED PIPES SET WITH REGISTRATION NO. 11622.  
ALL MONUMENTS SHOWN THUS: ●  
ARE FOUND 5/8" PIPES, UNLESS OTHERWISE NOTED.  
BASIS OF BEARING SYSTEM:  
ALL BEARINGS ARE IN RELATIONSHIP WITH THE EAST LINE S.W. 1/4 SEC. 24, WHICH IS ASSUMED TO BE N01°34'44"W.



## BLOCK 1

## BLOCK 2

Surveyor's Certificate  
I hereby certify that I have surveyed and platted the property described on this plat as REPLAT OF BLOCK 2, GLENDALE THIRD; that this plat is a correct representation of the survey; that all distances are correctly shown on the plat in feet and hundredths of a foot; that all monuments have been correctly placed in the ground as shown; that the outside boundary lines are correctly designated on the plat; and that there are no wet lands as defined in MS 505.02, Subd. 1, or public highways to be designated other than as shown.

*James E. Swanson*  
James E. Swanson, R.L.S.  
Minnesota License Number 11622

State of Minnesota  
County of Olmsted  
The surveyor's certificate was subscribed and sworn to before me, a Notary Public, this 22<sup>nd</sup> day of September, 1994.

*Ray D. Mertz*  
Notary Public, Olmsted County, Minnesota

My commission expires:

County Surveyor  
I certify that this plat has been checked mathematically, and that the plat conforms to the applicable laws, this 23 day of September, 1994.  
*Edward P. Kuvile*  
Olmsted County Surveyor

Tax Statements  
Taxes payable for the year 1994 on the land herein described have been paid, there are no delinquent taxes and transfer has been entered this 30 day of October, 1994.  
*Bob Ryan*  
Olmsted County Auditor/Treasurer  
by *Ann Cocker* Deputy

City Approval  
State of Minnesota  
County of Olmsted  
City of Rochester  
I, Carole A. Grimm, City Clerk in and for the City of Rochester, do hereby certify that on the 19 day of Sept, 1994, the accompanying plat was duly approved by the Common Council of the City of Rochester. In testimony thereof I have hereunto signed my name and affixed the seal of said City of Rochester this 29 day of Sept, 1994.  
*Carole A. Grimm*  
Carole A. Grimm, City Clerk

County Recorder  
DOCUMENT NUMBER 692883  
I hereby certify that this instrument was filed in the office of the County Recorder for record on this 3 day of October, 1994, at 11:42 o'clock A.M., and was duly recorded in the Olmsted County records.  
*Mary F. Gallier*  
County Recorder  
*Carole M. Ferris*  
Deputy

Instrument of Dedication  
KNOW ALL MEN BY THESE PRESENTS: That Glendale Partners of Rochester, Inc., a Minnesota Corporation, owner and proprietor of the following described property situated in the City of Rochester, State of Minnesota, to wit:  
Lots 1 - 6 inclusive, Block 2, GLENDALE THIRD.

have caused the same to be surveyed and platted as REPLAT OF BLOCK 2, GLENDALE THIRD and do hereby dedicate the easements as shown on this plat for drainage and utility purposes only.  
In witness whereof said Glendale Partners of Rochester, Inc., a Minnesota Corporation has caused these presents to be signed by its proper officers this 22<sup>nd</sup> day of September, 1994.

GLENDALE PARTNERS OF ROCHESTER, INC.  
*Robert G. Gill*  
Secretary-Treasurer  
*R.L. Hexum Sr.*  
President

State of Minnesota  
County of Olmsted  
The foregoing instrument was acknowledged before me this 22<sup>nd</sup> day of September, 1994, by Robert G. Gill, Secretary-Treasurer, and R.L. Hexum Sr., President, officers of Glendale Partners of Rochester, Inc., a Minnesota Corporation, on behalf of the Corporation.

*Ray D. Mertz*  
Notary Public, Olmsted County, Minnesota

PREPARED BY:  
McGHEE & BETTS, INC.  
CONSULTING ENGINEERS  
PLANNERS, LAND SURVEYORS  
ROCHESTER, MINNESOTA