

ELTON RIDGE SECOND REPLAT

NOTE:
 ALL MONUMENTS SHOWN THUS: ○
 ARE 5/8" I.D. CAPPED PIPES SET
 WITH REGISTRATION NO. 11622.
 ALL MONUMENTS SHOWN THUS: ●
 ARE FOUND 5/8" PIPE.
 BASIS OF BEARING SYSTEM:
 ALL BEARINGS ARE IN RELATIONSHIP
 WITH THE NORTH LINE S. 1/2 NW 1/4
 SEC 23, WHICH IS ASSUMED TO BE
 N89°42'30" E.

SCALE IN FEET
 0 10 20 40 80

Surveyor's Certificate

I hereby certify that I have surveyed and platted the property described on this plat as ELTON RIDGE SECOND REPLAT, that this is a correct representation of the survey; that all distances are correctly shown on the plat in feet and hundredths of a foot; that all monuments have been correctly placed in the ground as shown; that the outside boundary lines are correctly designated on the plat; and that there are no wet lands or public highways to be designated on said plat other than as shown thereon; and that said plat has been previously platted as Lot 20, Block 1, Elton Ridge First Replat.

James E. Swanson
 James E. Swanson, R.L.S.
 Minnesota Registration Number 11622

State of Minnesota
 County of Olmsted

The surveyor's certificate was subscribed and sworn to before me, a Notary Public, this 8th day of MARCH, 1984.

William E. Tontich
 Notary Public, Olmsted County, Minnesota

My commission expires _____
 County Surveyor

I certify that this plat has been checked mathematically and that the plat conforms to the applicable platting laws, this 8th day of MARCH, 1984.

Robert W. Brand
 Olmsted County Surveyor

County Recorder

DOCUMENT NUMBER 167-140

I hereby certify that this instrument was filed in the Office of the County Recorder for record on this 27 day of March, 1984, at 1 o'clock P. M., and was duly recorded in the Olmsted County records.

By Levi Finstrom
 County Recorder

Deputy

City Approval

State of Minnesota
 County of Olmsted
 City of Rochester

I, Carole A. Grimm, City Clerk in and for the City of Rochester, do hereby certify that on the 19 day of March, 1984, the accompanying plat was duly approved by the Common Council of the City of Rochester. In testimony thereof I have hereunto signed my name and affixed the seal of said City of Rochester this 20 day of March, 1984.

Carole A. Grimm
 City Clerk

Tax Statement

Taxes due and payable for the year 1984 have been paid.

Bob Ryan
James Cocker Deputy
 Olmsted County Treasurer

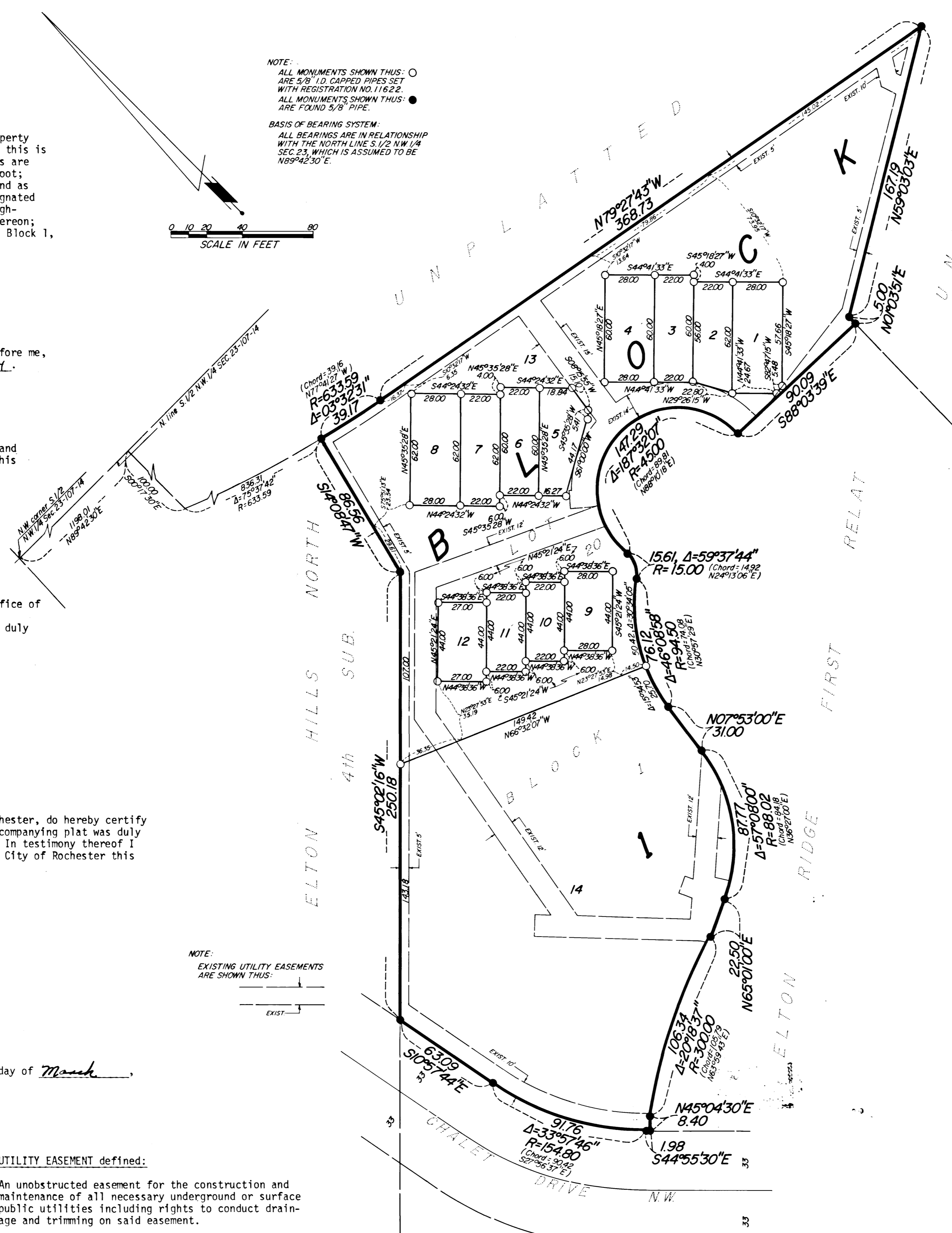
Date March 27, 1984

No delinquent taxes due and transfer entered this 21st day of March, 1984.

Russ Browning
 County Auditor
Melvin Nelson Deputy

UTILITY EASEMENT defined:

An unobstructed easement for the construction and maintenance of all necessary underground or surface public utilities including rights to conduct drainage and trimming on said easement.



Instrument of Dedication

KNOW ALL MEN BY THESE PRESENTS: That Elcor Enterprises, Inc., a Minnesota corporation, owner and proprietor, and Norwest Bank Rochester, N.A., mortgagee of the following described property situated in the City of Rochester, State of Minnesota to wit:

Lot 20, Block 1, Elton Ridge First Replat

have caused the same to be surveyed and platted as ELTON RIDGE SECOND REPLAT and do hereby donate and dedicate to the public for the public use forever the easements as shown on this plat for drainage and utility purposes only.

In witness whereof said Elcor Enterprises Inc., a Minnesota corporation, has caused these presents to be signed by its proper officers this 13th day of March, 1984.

Richard L. Hexum Jr.
 President

State of Minnesota
 County of Olmsted

The foregoing instrument was acknowledged before me this 13th day of March, 1984, by Richard L. Hexum Jr., President of Elcor Enterprises Inc., a Minnesota corporation, on behalf of the corporation.

William E. Tontich
 Notary Public, Olmsted County, Minnesota

My commission expires _____

In witness whereof said Norwest Bank Rochester, N.A. has caused these presents to be signed by its proper officers this 14th day of March, 1984.

Mark D. Knutson
 Comm. P.E. Officer

Angie J. Huber
 EVP

State of Minnesota
 County of Olmsted

The foregoing instrument was acknowledged before me this 14th day of March, 1984, by Rex Horlocker its Vice President and Mark D. Knutson its Comm. P.E. Officer officers of Norwest Bank Rochester, N.A. on behalf of the corporation.

Jody L. Bower
 Notary Public, Olmsted County, Minnesota

My commission expires _____

Jody L. Bower
 NOTARY PUBLIC - MINNESOTA
 OLMTSTED COUNTY
 My Commission Expires Apr. 4, 1990

OFFICIAL PLAT

PREPARED BY:
 McGHIE & BETTS, INC.
 CONSULTING ENGINEERS
 LAND SURVEYORS
 ROCHESTER, MINNESOTA