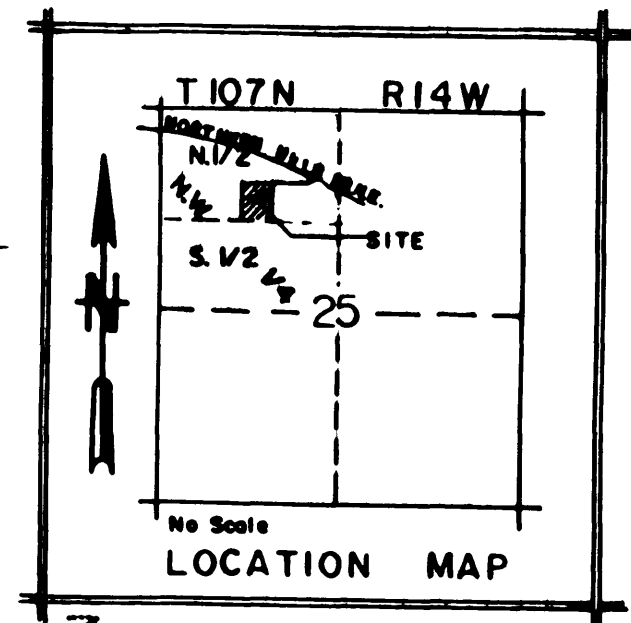
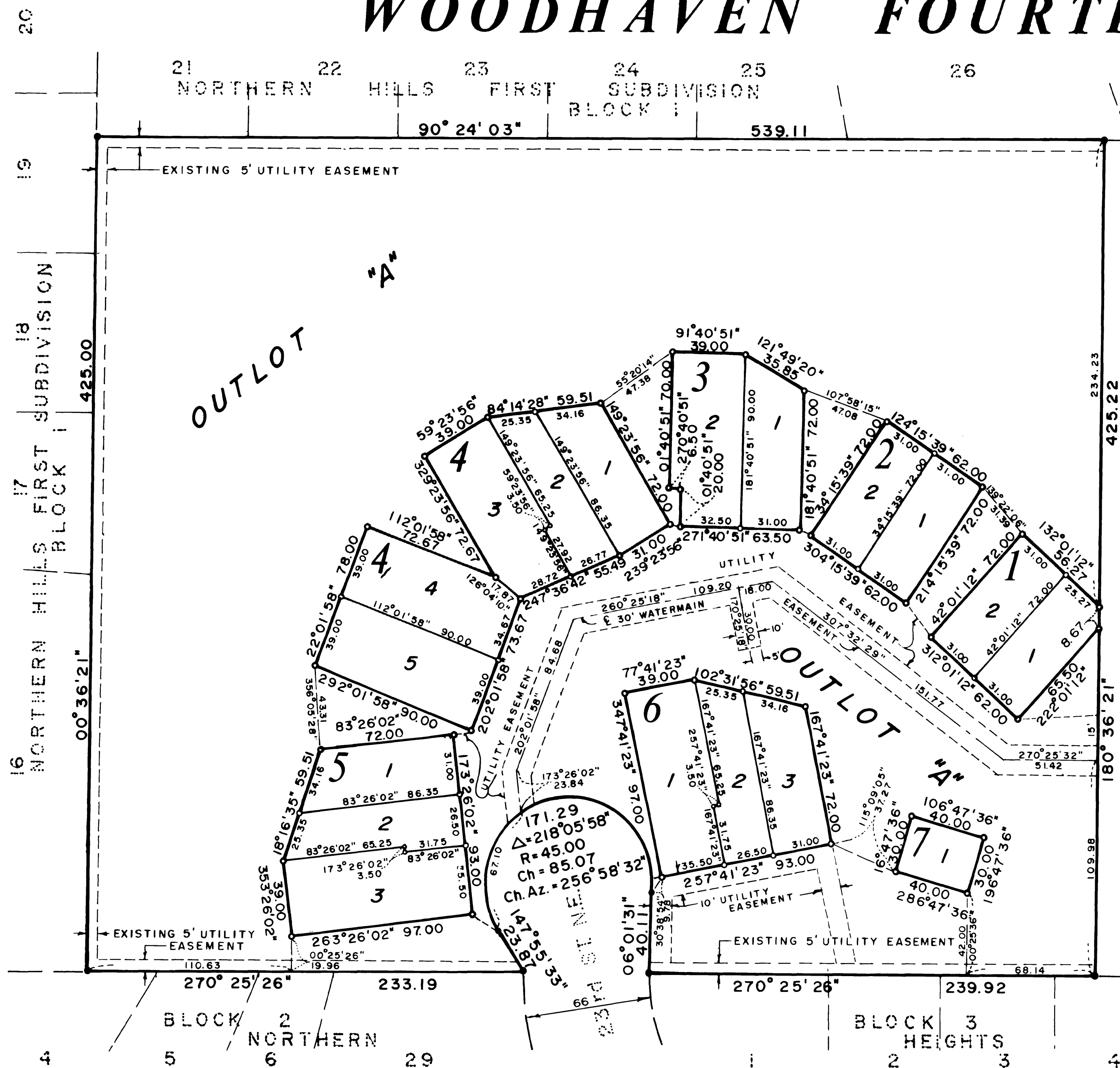


# WOODHAVEN FOURTH SUBDIVISION



### INSTRUMENT OF DEDICATION

KNOW ALL MEN BY THESE PRESENTS: That Younge Companies, a partnership consisting of Younge Development Co. and Younge Bros. Construction, both of which are Minnesota Corporations, owners and proprietors of the following described property situated in the County of Olmsted, State of Minnesota, to wit:

All of Lot 4, Block 1 of Woodhaven First Subdivision except that part thereof platted as Woodhaven Second Subdivision, according to the plats thereof on file in the County Recorders Office, Olmsted County, Minnesota.

Said tract contains 5.11 acres more or less.

Have caused the same to be surveyed and replatted as WOODHAVEN FOURTH SUBDIVISION and do hereby grant the easements as shown on this plat.

In witness whereof said Younge Bros. Construction Co. has caused these presents to be signed by its proper officers this \_\_\_\_\_ day of \_\_\_\_\_, 1983.

Jerry P. Younge, President  
Michael J. Younge, Vice President

STATE OF MINNESOTA  
 COUNTY OF OLMSTED

The foregoing instrument was acknowledged before me this \_\_\_\_\_ day of \_\_\_\_\_, 1983 by Jerry P. Younge and Michael J. Younge, President and Vice President respectively of Younge Bros. Construction Co., a Minnesota Corporation, on behalf of the Corporation.

[Signature]  
 Notary Public, Olmsted County, MN  
 My Commission Expires \_\_\_\_\_

In witness whereof said Younge Development Co. has caused these presents to be signed by its proper officer this \_\_\_\_\_ day of \_\_\_\_\_, 1983.

Rodney A. Younge  
 Rodney A. Younge, President

STATE OF MINNESOTA  
 COUNTY OF OLMSTED

The foregoing instrument was acknowledged before me this \_\_\_\_\_ day of \_\_\_\_\_, 1983 by Rodney A. Younge, President of Younge Development Co., a Minnesota Corporation, on behalf of the Corporation.

[Signature]  
 Notary Public, Olmsted County, MN  
 My Commission Expires \_\_\_\_\_

### SURVEYOR'S CERTIFICATE

I do hereby certify that I have surveyed and replatted the property described on this plat as WOODHAVEN FOURTH SUBDIVISION, that this plat is a correct representation of said survey, that all distances are correctly shown on said plat in feet and hundredths of a foot, that all monuments have been correctly placed in the ground as shown, that the outside boundary lines are correctly designated and that there are not wetlands or public highways to be designated on said plat other than as shown.

[Signature]  
 DONALD R. BORCHERDING  
 Minnesota R.L.S. 10162

STATE OF MINNESOTA  
 COUNTY OF OLMSTED

The foregoing Surveyor's Certificate was acknowledged before me this 15<sup>th</sup> day of June, 1983 by Donald R. Borcharding, Minnesota R.L.S. No. 10162.

[Signature]  
 Notary Public, Olmsted County, MN  
 My Commission Expires 12-21-85

### COUNTY AUDITOR

No delinquent taxes due and transfer entered this 27<sup>th</sup> day of June, 1983.

[Signature]  
 Olmsted County Auditor  
[Signature], Deputy

### COUNTY REGISTRAR OF TITLES

Document Number 37114

I hereby certify that this instrument was filed in the office of the County Registrar of Titles for record on this 27<sup>th</sup> day of June, 1983, at 11 o'clock A.M. and was duly recorded in Olmsted County Records.

[Signature]  
 Olmsted County Registrar of Titles  
 by [Signature], deputy

### UTILITY EASEMENT DEFINED

An unobstructed easement for the construction and maintenance of all necessary overhead, underground, or surface public utilities, including rights to conduct drainage and trimming on said easement.

### WATERMAIN EASEMENT DEFINED

An unobstructed easement for the construction and maintenance of a public watermain and appurtenances.

### COUNTY SURVEYOR

I certify that this plat has been checked mathematically and that the plat conforms to the applicable platting laws.

Approved this 15<sup>th</sup> day of June, 1983

[Signature]  
 Olmsted County Surveyor

### CITY APPROVAL

State of Minnesota  
 County of Olmsted  
 City of Rochester

I, Carole A. Grimm, City Clerk in and for the City of Rochester, do hereby certify that on the 20 day of June, 1983, the accompanying plat was duly approved by the Common Council of the City of Rochester. In testimony whereof, I have hereunto signed my name and affixed the Seal of said City of Rochester this 22 day of June, 1983.

[Signature]  
 City Clerk

PREPARED BY  
**YAGGY ASSOCIATES, INC.**  
 CONSULTING ENGINEERS ■ PLANNERS ■ SURVEYORS  
 ROCHESTER, MINNESOTA ■ MASON CITY, IOWA