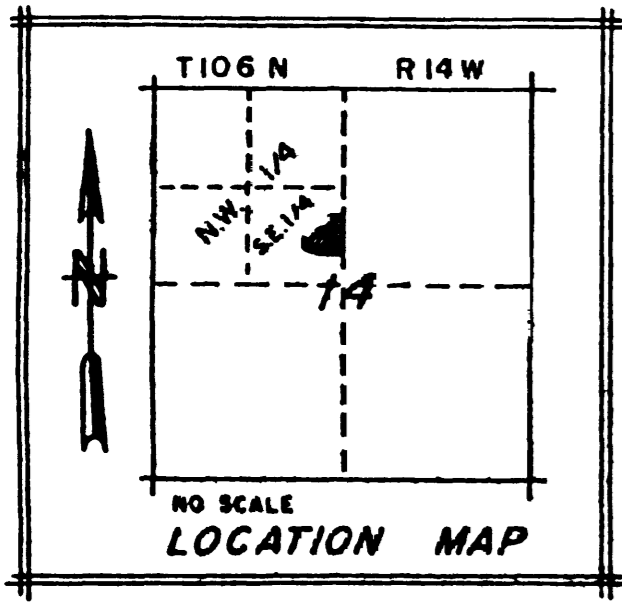
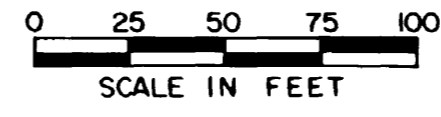
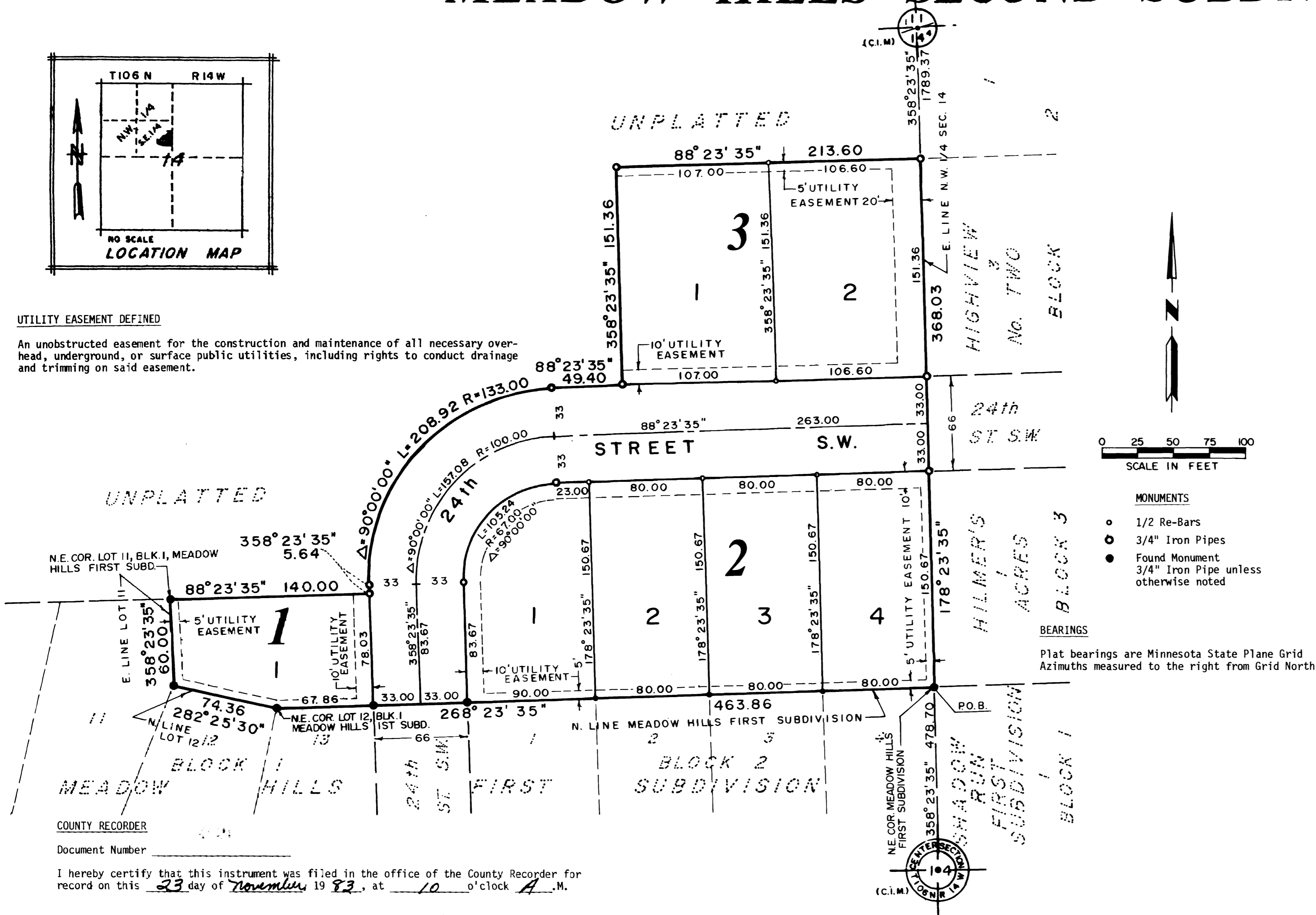


# MEADOW HILLS SECOND SUBDIVISION



### UTILITY EASEMENT DEFINED

An unobstructed easement for the construction and maintenance of all necessary overhead, underground, or surface public utilities, including rights to conduct drainage and trimming on said easement.



- MONUMENTS**
- 1/2 Re-Bars
  - 3/4" Iron Pipes
  - Found Monument
  - 3/4" Iron Pipe unless otherwise noted

**BEARINGS**  
Plat bearings are Minnesota State Plane Grid Azimuths measured to the right from Grid North.

### INSTRUMENT OF DEDICATION

KNOW ALL MEN BY THESE PRESENTS: That Meadow Hills, Incorporated, a Minnesota Corporation, Mortgagor and First Bank Rochester, a Minnesota Corporation, Mortgagee, all being owners and proprietors of the following described property situated in the County of Olmsted, State of Minnesota, to wit:

That part of the Southeast Quarter of the Northwest Quarter of Section 14, Township 106 North, Range 14 West, Olmsted County, Minnesota, described as follows:

Commencing at the southeast corner of said Northwest Quarter; thence northerly on a Minnesota State Plane Grid azimuth from north of 358 degrees 23 minutes 35 seconds azimuth along the east line of Meadow Hills First Subdivision 478.70 feet to the northeast corner of said subdivision and the point of beginning; thence westerly 268 degrees 23 minutes 35 seconds azimuth along the north line of said subdivision 463.86 feet to the northeast corner of Lot 12, Block 1, Meadow Hills First Subdivision; thence westerly 282 degrees 25 minutes 30 seconds azimuth along the north line of said lot 12 a distance of 74.36 feet; thence northerly 358 degrees 23 minutes 35 seconds azimuth along the east line of Lot 11, Block 1, Meadow Hills First Subdivision 60.00 feet to the northeast corner of said Lot 11; thence easterly 88 degrees 23 minutes 35 seconds azimuth 140.00 feet; thence northerly 358 degrees 23 minutes 35 seconds azimuth 5.64 feet; thence northeasterly 208.92 feet along a tangential curve concave to the southeast having a radius of 133.00 feet and a central angle of 90 degrees 00 minutes 00 seconds; thence easterly 88 degrees 23 minutes 35 seconds azimuth 49.40 feet; thence northerly 358 degrees 23 minutes 35 seconds azimuth 151.36 feet; thence easterly 88 degrees 23 minutes 35 seconds azimuth 213.60 feet to the east line of said Northwest Quarter; thence southerly 178 degrees 23 minutes 35 seconds azimuth along said east line 368.03 feet to the point of beginning.

Said tract contains 2.86 acres more or less.

Have caused the same to be surveyed and platted as MEADOW HILLS SECOND SUBDIVISION and do hereby donate and dedicate to the public for public use forever the thoroughfares and grant the easements as shown on this plat.

In witness whereof, said First Bank Rochester, a Minnesota Corporation has caused these presents to be signed by its proper officers and its corporate seal to be hereunto affixed this 21 day of September, 1983

D.E. Hanson, Vice President

Kathy Betz, Real Estate Loan Officer

STATE OF MINNESOTA  
COUNTY OF OLMTSTED

The foregoing instrument was acknowledged before me this 1<sup>st</sup> day of September, 1983, by D.E. Hanson and Kathy Betz, Vice President and Real Estate Loan Officer, respectively of First Bank Rochester, a Minnesota Corporation, on behalf of the Corporation.



Martha Tompkins  
Notary Public, Olmsted County, MN  
My Commission Expires 8/3/87

In witness whereof said Meadows Hills, Incorporated, has caused these presents to be signed by its proper officers this 1<sup>st</sup> day of September, 1983.

Walter D. Cassel  
Walter D. Cassel - President

Richard Wedge  
Richard Wedge - Secretary - Treasurer

STATE OF MINNESOTA  
COUNTY OF OLMTSTED

The foregoing instrument was acknowledged before me this 1<sup>st</sup> day of September, 1983 by Walter D. Cassel and Richard Wedge, President and Secretary-Treasurer, respectively of Meadow Hills, Incorporated, a Minnesota Corporation, on behalf of the Corporation.

Narjorie Alden  
Notary Public, Olmsted County, MN  
My Commission Expires 5-3-86

### SURVEYOR'S CERTIFICATE

I do hereby certify that I have surveyed and platted the property described on this plat as MEADOW HILLS SECOND SUBDIVISION, that this plat is a correct representation of said survey, that all distances are correctly shown on said plat in feet and hundredths of a foot, that all monuments have been correctly placed in the ground as shown, that the outside boundary lines are correctly designated and that there are no wetlands or public highways to be designated on said plat other than as shown.

Donald R. Borcharding  
DONALD R. BORCHARDING  
Minnesota R.L.S. 10162

STATE OF MINNESOTA  
COUNTY OF OLMTSTED

The foregoing Surveyor's Certificate was acknowledged before me this 1<sup>st</sup> day of September, 1983 by Donald R. Borcharding, Minnesota R.L.S. 10162.

Notary Public  
Notary Public, Olmsted County, MN  
My Commission Expires 7-25-8

COUNTY RECORDER  
Document Number \_\_\_\_\_

I hereby certify that this instrument was filed in the office of the County Recorder for record on this 23 day of November, 1983, at 10 o'clock A.M.

Olmsted County Recorder  
Catherine L. Wong Deputy

COUNTY TREASURER  
Taxes due and payable for the year 1983, have been paid as of this 21<sup>st</sup> day of November, 1983.

Olmsted County Treasurer  
Cherlene Van Oort Deputy

COUNTY AUDITOR  
No delinquent taxes due and transfer entered this 21<sup>st</sup> day of November, 1983.

Olmsted County Auditor  
Meredith Nelson Deputy

### COUNTY SURVEYOR

I certify that this plat has been checked mathematically and that the plat conforms to the applicable platting laws.

Approved this 2<sup>nd</sup> day of Sept., 1983

Roger W. Brand  
Olmsted County Surveyor

### CITY APPROVAL

State of Minnesota  
County of Olmsted  
City of Rochester

I, Carole A. Grimm, City Clerk, in and for the City of Rochester, do hereby certify that on the 19 day of September, 1983, the accompanying plat was duly approved by the Common Council of the City of Rochester. In testimony whereof, I have hereunto signed my name and affixed the Seal of said City of Rochester this 26 day of September, 1983.

Carole A. Grimm  
City Clerk

PREPARED BY  
**YAGGY ASSOCIATES, INC.**  
CONSULTING ENGINEERS ■ PLANNERS ■ SURVEYORS  
ROCHESTER, MINNESOTA ■ MASON CITY, IOWA