

# INNSBRUCK SEVEN

NOTE:  
 ALL MONUMENTS SHOWN THUS: ○  
 ARE 5/8" I.D. CAPPED PIPES SET  
 WITH REGISTRATION NO. 11622.  
 ALL MONUMENTS SHOWN THUS: ●  
 ARE FOUND 5/8" PIPES.  
 BASIS OF BEARING SYSTEM:  
 ALL BEARINGS ARE IN RELATIONSHIP  
 WITH THE WEST LINE E 1/2 SEC. 15,  
 WHICH IS ASSUMED TO BE N00°02'00" E.

## Surveyor's Certificate

I hereby certify that I have surveyed and platted the property described on this plat as INNSBRUCK SEVEN, that this is a correct representation of the survey; that all distances are correctly shown on the plat in feet and hundredths of a foot; that all monuments have been correctly placed in the ground as shown; that the outside boundary lines are correctly designated on the plat; and that there are no wet lands or public highways to the designated on said plat other than as shown thereon.

*James E. Swanson*  
 James E. Swanson, R.L.S.  
 Minnesota Registration Number 11622

State of Minnesota  
 County of Olmsted  
 The surveyor's certificate was subscribed and sworn to before me, a Notary Public, this 26<sup>th</sup> day of September, 1983.

*William E. Tointon*  
 Notary Public, Olmsted County, Minnesota  
 My commission expires 30<sup>th</sup> day of September, 1983.

I certify that this plat has been checked mathematically and that the plat conforms to the applicable platting laws, this 30<sup>th</sup> day of September, 1983.

*Robert W. Brand*  
 Olmsted County Surveyor

County Recorder

DOCUMENT NUMBER

I hereby certify that this instrument was filed in the Office of the County Recorder for record on this 21<sup>st</sup> day of Nov., 1983 at 4 o'clock P.M., and was duly recorded in the Olmsted County records.

*Sara Finstuen*  
 County Recorder

*Nancy Johnson*  
 Deputy

City Approval

State of Minnesota  
 County of Olmsted  
 City of Rochester

I, Carole A. Grimm, City Clerk in and for the City of Rochester, do hereby certify that on the 3<sup>rd</sup> day of October, 1983, the accompanying plat was duly approved by the Common Council of the City of Rochester. In testimony whereof I have hereunto signed my name and affixed the seal of said City of Rochester this 4<sup>th</sup> day of October, 1983.

*Carole A. Grimm*  
 City Clerk

Tax Statement

Taxes due and payable for the year 1983 have been paid.

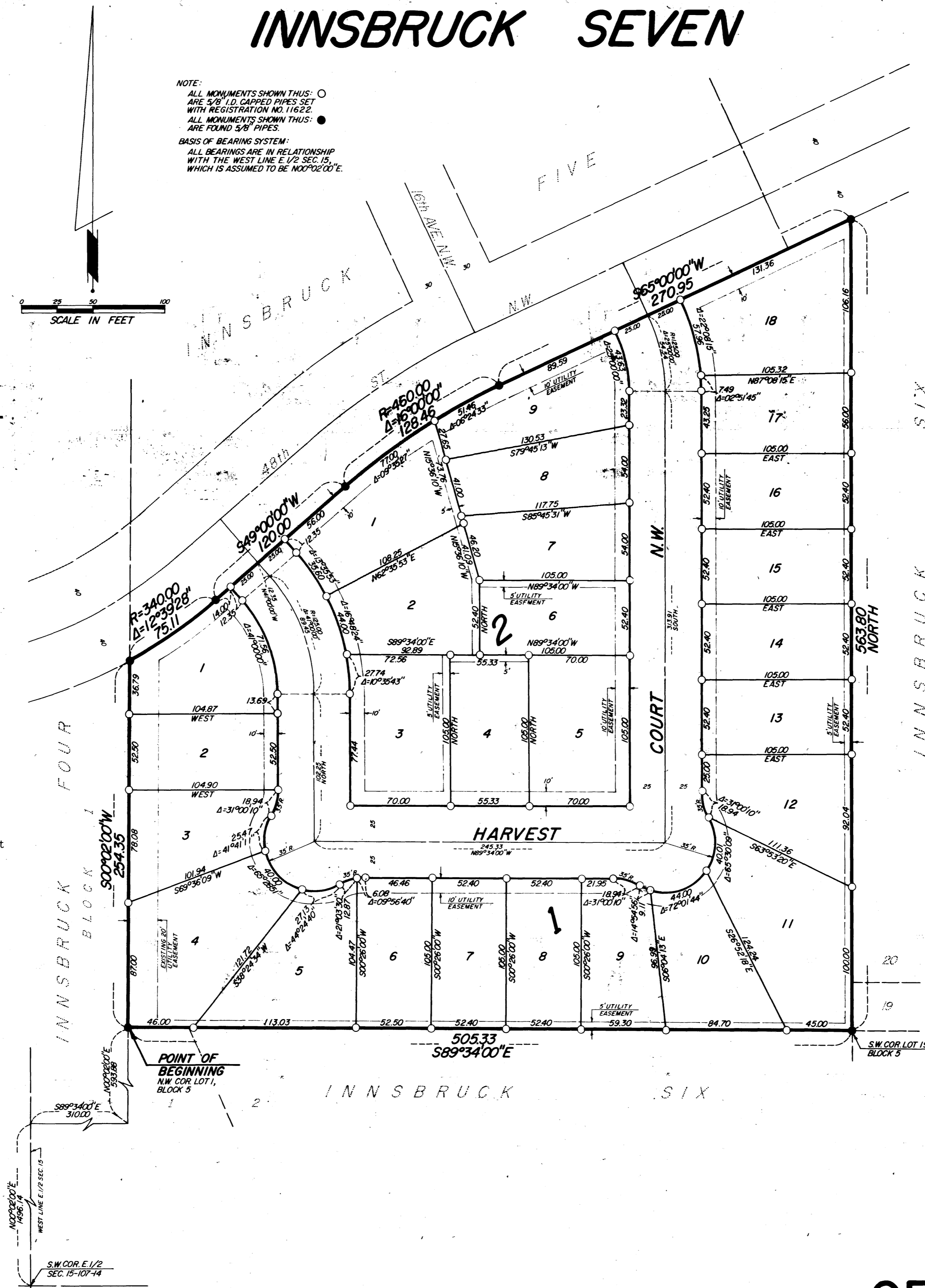
*Bob Ryan*  
 Olmsted County Treasurer  
*Charlene Van Wert*  
 Deputy  
 Date November 21, 1983

No delinquent taxes due and transfer entered this 21<sup>st</sup> day of November, 1983.

*Paul Branning*  
 County Auditor  
*Molva Nelson*  
 Deputy

## UTILITY EASEMENT DEFINED:

An unobstructed easement for the construction and maintenance of all necessary underground or surface public utilities including rights to conduct drainage and trimming on said easement.



## Instrument of Dedication

KNOW ALL MEN BY THESE PRESENTS: That Builders Land Company, a Minnesota corporation, owner and proprietor of the following described property situated in the City of Rochester, State of Minnesota to wit:

A part of the West 5/8 of the East One Half of Section 15, Township 107 North, Range 14 West, Rochester, Minnesota, described as follows:

Commencing at the southwest corner of the East One Half of said Section 15; thence North 00 degrees 02 minutes 00 seconds East, assumed bearing, along the west line of said East One Half, 1496.14 feet; thence South 89 degrees 34 minutes 00 seconds East, 310.00 feet; thence North 00 degrees 02 minutes 00 seconds East, 593.88 feet to the northwest corner of Lot 1, Block 5, Innsbruck Six for a point of beginning; thence South 89 degrees 34 minutes 00 seconds East along the north line of said Innsbruck Six a distance of 505.33 feet to the southwest corner of Lot 19, Block 5; thence North along the west line of said Block 5, a distance of, 563.80 feet to the southerly line of 48th Street Northwest as platted in Innsbruck Six, and the next four courses are along the southerly line of 48th Street Northwest as platted in Innsbruck Five and Innsbruck Six; thence South 65 degrees 00 minutes 00 seconds West, 270.95 feet; thence southwesterly 128.46 feet along a tangential curve, concave southeasterly, central angle of 16 degrees 00 minutes 00 seconds and radius of 460.00 feet; thence South 49 degrees 00 minutes 00 seconds West, 120.00 feet; thence southwesterly 75.11 feet along a tangential curve, concave northwesterly, central angle of 12 degrees 39 minutes 28 seconds and radius of 340.00 feet to the northeast corner of Block 1, Innsbruck Four; thence South 00 degrees 02 minutes 00 seconds West along the east line of said Innsbruck Four, 254.35 feet to the point of beginning.

Containing 4.96 acres.

have caused the same to be surveyed and platted as INNSBRUCK SEVEN and do hereby donate and dedicate to the public for the public use forever the court and also dedicate the easements as shown on this plat for drainage and utility purposes only.

In witness whereof said Builders Land Company, a Minnesota corporation, has caused these presents to be signed by its proper officers this 27<sup>th</sup> day of September, 1983.

*Philip Welp*  
 Philip Welp, Vice President

*Kathleen R. Anderson*  
 Kathleen R. Anderson, Assistant Secretary

State of Minnesota  
 County of Hennepin

The foregoing instrument was acknowledged before me this 27<sup>th</sup> day of September, 1983, by Philip Welp, its Vice President, and Kathleen R. Anderson, its Assistant Secretary officers of Builders Land Company, a Minnesota corporation on behalf of the corporation.

*Synthia R. Elstad*

**SYNTHIA R. ELSTAD**  
 NOTARY PUBLIC - MINNESOTA  
 HENNEPIN COUNTY  
 My Commission Expires Aug. 10, 1989

# OFFICIAL PLAT

PREPARED BY:  
 MCGHIE & BETTS, INC.  
 CONSULTING ENGINEERS  
 LAND SURVEYORS  
 ROCHESTER, MINNESOTA

INNSBRUCK SEVEN