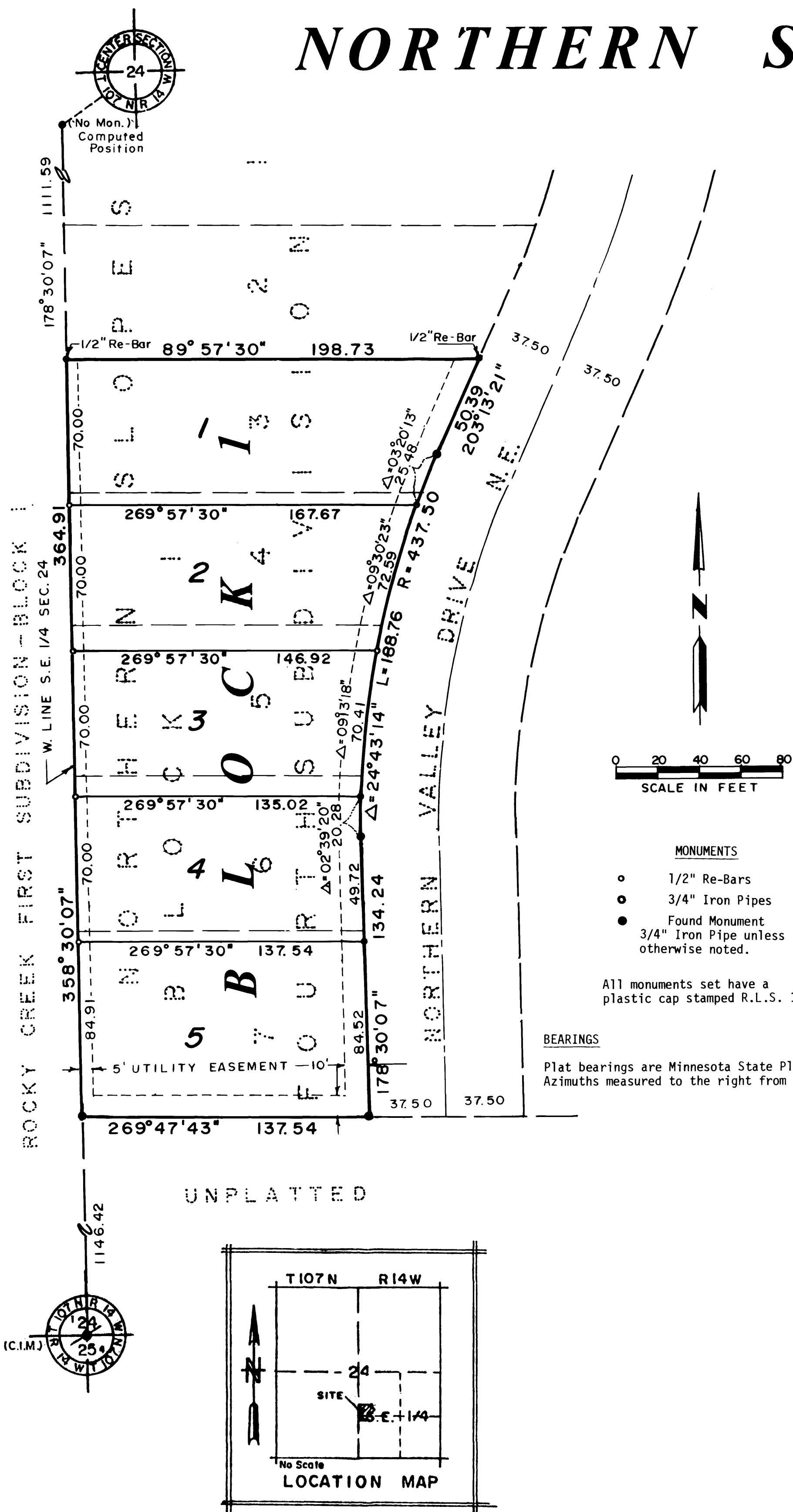


NORTHERN SLOPES FIFTH SUBDIVISION



CITY APPROVAL

State of Minnesota
County of Olmsted
City of Rochester

I, Carole A. Grimm, City Clerk, in and for the City of Rochester, do hereby certify that on the 7 day of November, 1983, the accompanying plat was duly approved by the Common Council of the City of Rochester. In testimony whereof, I have hereunto signed my name and affixed the Seal of said City of Rochester this 8 day of November, 1983.

Carole A. Grimm
City Clerk

COUNTY RECORDER

Document Number 461581

I hereby certify that this instrument was filed in the office of the County Recorder for record on this 15 day of November, 1983, at 4:1/2 o'clock P.M. and was duly recorded in Olmsted County Records.

LOIS FINSTUEN
Olmsted County Recorder
Carol M. Ferrier
deputy

COUNTY TREASURER

Taxes due and payable for the year 1983, have been paid as of this 15 day of November, 1983.

[Signature]
Olmsted County Treasurer

COUNTY AUDITOR

No delinquent taxes due and transfer entered this 14th day of November, 1983.

[Signature]
Olmsted County Auditor
Melvin Nelson
Deputy

UTILITY EASEMENT DEFINED

An unobstructed easement for the construction and maintenance of all necessary overhead, underground, or surface public utilities, including rights to conduct drainage and trimming on said easement.

INSTRUMENT OF DEDICATION

KNOW ALL MEN BY THESE PRESENTS: That Payne Company, a Minnesota Corporation, owners and proprietors of the following described property situated in the County of Olmsted, State of Minnesota, to wit:

All of Lots 3, 4, 5, 6 and 7, Block 1, Northern Slopes Fourth Subdivision according to the plat thereof on file in the County Recorders Office, Olmsted County, Minnesota

Said tract contains 1.26 acres more or less.

Have caused the same to be surveyed and replatted as NORTHERN SLOPES FIFTH SUBDIVISION and do hereby grant the easements as shown on this plat.

In witness whereof said Payne Company has caused these presents to be signed by its proper officers this 2nd day of November, 1983.

[Signature]
H. E. Payne - President

[Signature]
V. M. Payne - Secretary-Treasurer

STATE OF MINNESOTA
COUNTY OF OLMSTED

The foregoing instrument was acknowledged before me this 15 day of November, 1983, by H. E. Payne and V. M. Payne, President and Secretary-Treasurer, respectively, of Payne Company, A Minnesota Corporation, on behalf of the corporation.

[Signature]
Notary Public, Olmsted County, MN
My Commission Expires 11/15/84

SURVEYOR'S CERTIFICATE

I do hereby certify that I have surveyed and replatted the property described on this plat as NORTHERN SLOPES FIFTH SUBDIVISION that this plat is a correct representation of said survey, that all distances are correctly shown on said plat in feet and hundredths of a foot, that all monuments have been correctly placed in the ground as shown, that the outside boundary lines are correctly designated and that there are no wetlands or public highways to be designated on said plat other than as shown.

[Signature]
DONALD R. BORCHERDING
Minnesota R.L.S. 10162

STATE OF MINNESOTA
COUNTY OF OLMSTED

The foregoing Surveyor's Certificate was acknowledged before me this 15 day of November, 1983 by Donald R. Borcharding, R.L.S. No. 10162.

[Signature]
Notary Public, Olmsted County, MN
My Commission Expires 11/15/84

COUNTY SURVEYOR

I certify that this plat has been checked mathematically and that the plat conforms to the applicable platting laws.

This 15th day of November, 1983.

[Signature]
Olmsted County Surveyor