

UTILITY EASEMENT defined:

An unobstructed easement for the construction and maintenance of all necessary underground or surface public utilities including rights to conduct drainage and trimming on said easement.

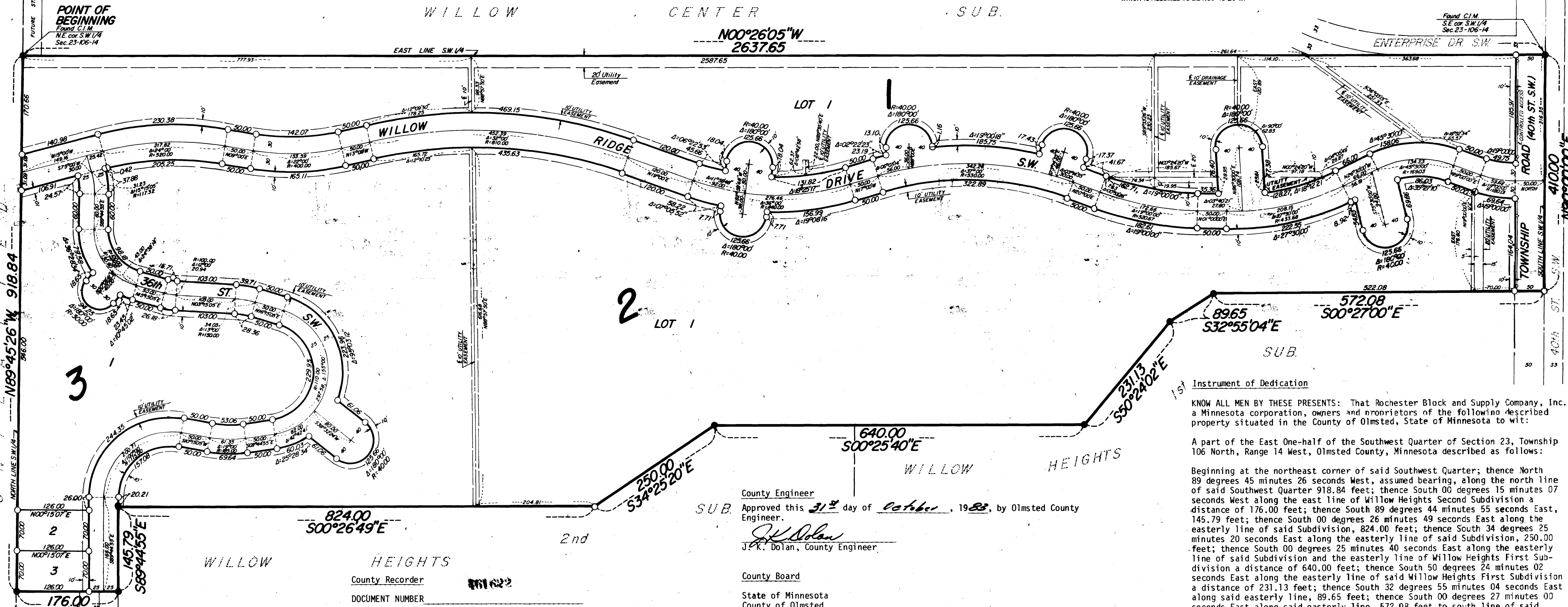
DRAINAGE EASEMENT defined:

An unobstructed easement for the operation and maintenance of waterways, both surface and underground, running over, across, and under said easement.

WILLOW RIDGE

NOTE:
ALL MONUMENTS SHOWN THIS: ○ ARE 5/8" I.D. GALVANIZED IRON PIPES SET WITH REGISTRATION NO. 11622.
ALL MONUMENTS SHOWN THIS: ● ARE FOUND T-BARS.
UNLESS OTHERWISE NOTED.
BASIS OF BEARINGS SYSTEM:
ALL BEARINGS ARE IN RELATIONSHIP WITH THE NORTH LINE SW 1/4 SEC. 23, WHICH IS ASSUMED TO BE 89°45'26" W.

SCALE IN FEET



Instrument of Dedication

KNOW ALL MEN BY THESE PRESENTS: That Rochester Block and Supply Company, Inc., a Minnesota corporation, owners and proprietors of the following described property situated in the County of Olmsted, State of Minnesota to wit:

A part of the East One-half of the Southwest Quarter of Section 23, Township 106 North, Range 14 West, Olmsted County, Minnesota described as follows:

Beginning at the northeast corner of said Southwest Quarter; thence North 89 degrees 45 minutes 26 seconds West, assumed bearing, along the north line of said Southwest Quarter 918.84 feet; thence South 00 degrees 15 minutes 07 seconds West along the east line of Willow Heights Second Subdivision a distance of 176.00 feet; thence South 89 degrees 44 minutes 55 seconds East, 145.79 feet; thence South 00 degrees 26 minutes 49 seconds East along the easterly line of said Subdivision, 824.00 feet; thence South 34 degrees 25 minutes 20 seconds East along the easterly line of said Subdivision, 250.00 feet; thence South 00 degrees 25 minutes 40 seconds East along the easterly line of said Subdivision and the easterly line of Willow Heights First Subdivision a distance of 640.00 feet; thence South 50 degrees 24 minutes 02 seconds East along the easterly line of said Willow Heights First Subdivision a distance of 231.13 feet; thence South 32 degrees 55 minutes 04 seconds East along said easterly line, 89.65 feet; thence South 00 degrees 27 minutes 00 seconds East along said easterly line, 572.08 feet to south line of said Southwest Quarter; thence North 90 degrees 00 minutes 00 seconds East along the south line of said Southwest Quarter a distance of 410.00 feet to the southeast corner thereof; thence North 00 degrees 26 minutes 05 seconds West along the east line of said Southwest Quarter a distance of 2637.65 feet to the point of beginning.

Containing 39.0 acres more or less.

have caused the same to be surveyed and platted as WILLOW RIDGE and do hereby donate and dedicate to the public, for the public use forever the thoroughfares and also dedicate the easements as shown on this plat for drainage and utility purposes only.

In witness whereof said Rochester Block and Supply Company, Inc. has caused these presents to be signed this 21st day of September 1983.

Lowell H. Penz
Lowell H. Penz - President

The foregoing instrument was acknowledged before me this 21st day of September, 1983 by Lowell H. Penz, President of Rochester Block and Supply Company, Inc., on behalf of the corporation.

Olivia Mae Morse
Notary Public, Olmsted County, Minnesota
My commission expires August 11, 1989

County Engineer
Approved this 31st day of October, 1983, by Olmsted County Engineer.

J.K. DoJan
J.K. DoJan, County Engineer

County Board

State of Minnesota
County of Olmsted

I do hereby certify that the accompanying plat was duly approved by the Olmsted County Board of Commissioners at a meeting held on the 8th day of November, 1983. In testimony whereof I have signed my name and affixed the seal of said County this 8th day of November, 1983.

Paul Drumm
Olmsted County Auditor

Planning Commission

We, the members of the Olmsted County Planning Advisory Commission, do hereby certify that we have examined the plat as shown, and find that it conforms to the provisions of the Subdivision Ordinance of Olmsted County.

Mary Sue Swisher
Commission Chairman

Township Board

The Township Board of Supervisors of Rochester Township, Olmsted County, do hereby certify that we have approved the accompanying plat. In testimony whereof, we have signed our names this 4th day of November, 1983.

David J. Sperry
Board Chairman
Louise Halling
Town Clerk

County Board of Health

The Board of Health has taken action favoring development of this plat utilizing approved community sewer and water system.

Richard A. Peltz
Supervisor, Division of Environmental Health, Olmsted County Health Department

County Recorder

DOCUMENT NUMBER

I hereby certify that this instrument was filed in the Office of the County Recorder for record on this 8th day of November, 1983, at 11:16 O'clock A.M., and was duly recorded in the Olmsted County records.

By *Lois Fins*
County Recorder
Carol Ann Ferris
Deputy

Tax Statement

Taxes due and payable for the year 1983 have been paid.

John L. Cocher
Olmsted County Treasurer

Date Nov 8, 1983

No delinquent taxes due and transfer entered this 8th day of November, 1983.

Paul Drumm
County Auditor

CONTROLLED ACCESS defined:

Ingress or egress to, from, or across the abutting roadway 40th St. S.W. is restricted by Olmsted County and said right of access is hereby dedicated to said road authority.

Surveyor's Certificate

I hereby certify that I have surveyed and platted the property described on this plat as WILLOW RIDGE, that this is a correct representation of the survey; that all distances are correctly shown on the plat in feet and hundredths of a foot; that all monuments have been correctly placed in the ground as shown; that the outside boundary lines are correctly designated on the plat; and that there are no wet lands or public highways to be designated on said plat other than as shown thereon.

James E. Swanson
James E. Swanson, R.L.S.
Minnesota Registration Number 11622

State of Minnesota
County of Olmsted

The surveyor's certificate was subscribed and sworn to before me, a Notary Public, this 14th day of September, 1983.

William E. Tointon
Notary Public, Olmsted County, Minnesota

My commission expires

County Surveyor

I certify that this plat has been checked mathematically and that the plat conforms to the applicable platting laws; this 14th day of September, 1983.

Roger W. Brand
Olmsted County Surveyor

OFFICIAL PLAT

PREPARED BY:
McGHEE & BETTS, INC.
CONSULTING ENGINEERS
LAND SURVEYORS
ROCHESTER, MINNESOTA

WILLOW RIDGE