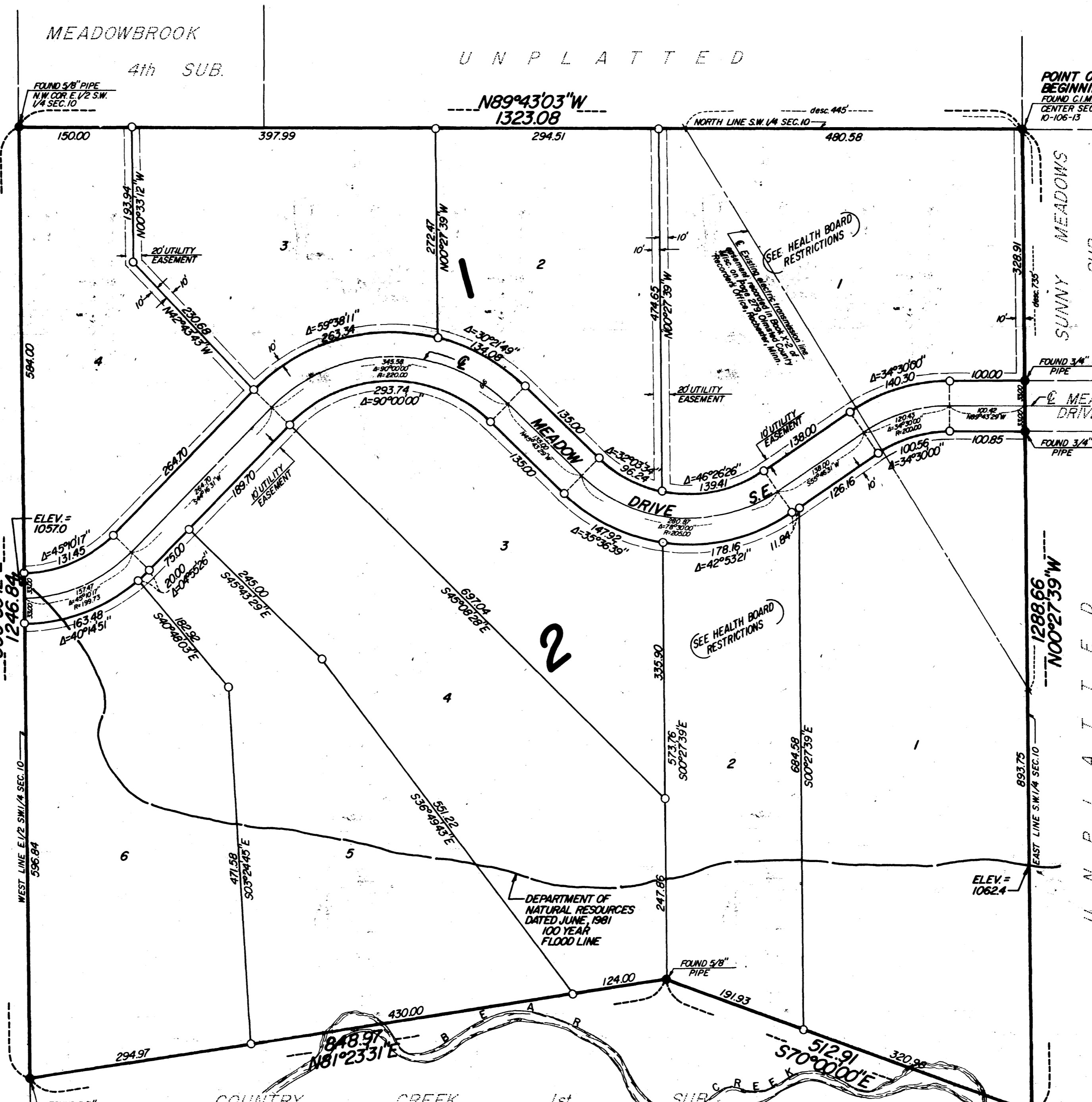


Surveyor's Certificate

I hereby certify that I have surveyed and platted the property described on this plat as COUNTRY CREEK SECOND SUBDIVISION; that this is a correct representation of the survey; that all distances are correctly shown on the plat in feet and hundredths of a foot; that all monuments have been correctly placed in the ground as shown; that the outside boundary lines are correctly designated on the plat; and that there are no wet lands or public highways to be designated on said plat other than as shown thereon.

COUNTRY CREEK SECOND SUBDIVISION



NOTE:
ALL MONUMENTS SHOWN THIS: ○
ARE 5/8" I.D. CAPPED PIPES SET
WITH REGISTRATION NO. 11622.
BASIS OF BEARING SYSTEM:
ALL BEARINGS ARE IN RELATIONSHIP
WITH THE NORTH LINE S.W. 1/4 SEC. 10,
WHICH IS ASSUMED TO BE N89°43'03"W.



James E. Swanson
James E. Swanson, R.L.S.
Minnesota Registration Number 11622

State of Minnesota
County of Olmsted
The surveyor's certificate was subscribed and sworn to before me,
a Notary Public, this 30th day of August, 1983.

William E. Tontton
Notary Public, Olmsted County, Minnesota

My commission expires August 4, 1989

Tax Statement
No delinquent taxes due and transfer entered this 20th day of September, 1983.

Rand Browning
County Auditor Rayl Pearson, Chief Deputy

County Surveyor
I certify that this plat has been check mathematically and that the plat conforms to the applicable platting laws, this 8th day of August, 1983.

Roger W. Brand
Olmsted County Surveyor

County Engineer
Approved this 31st day of August, 1983, by Olmsted County Engineer.

J. K. Dolan
J. K. Dolan, County Engineer

County Recorder
DOCUMENT NUMBER 451781

I hereby certify that this instrument was filed in the Office of the County Recorder for record on this 23 day of September, 1983, at 11:20 O'clock A.M., and was duly recorded in the Olmsted County records.

By Lou Enstuen
County Recorder

Deputy
Township Board
The Township Board of Supervisors of Marion Township, Olmsted County, do hereby certify that we have approved the accompanying plat. In testimony whereof we have signed our names this 13 day of Sept, 1983.

George W. Hartley
Board Chairman

Carl Scherr
Town Clerk

County Board
State of Minnesota
County of Olmsted
I do hereby certify that the accompanying plat was duly approved by the Olmsted County Board of Commissioners at a meeting held on the 20th day of September, 1983. In testimony whereof I have signed my name and affixed the seal of said County this 20th day of September, 1983.

Rand Browning
Olmsted County Auditor Rayl Pearson, Chief Deputy

County Board of Health
The Olmsted County Board of Health has approved this plat for water supply and sewage disposal system except that Lot 1 Block 1 and Lot 2 Block 2 are not approved for sanitary sewage disposal until meeting Olmsted County Board of Health requirements.
Richard A. Peter
Supervisor, Division of Environmental Health, Olmsted County Health Department

Planning Commission
We, the members of the Olmsted County Planning Advisory Commission, do hereby certify that we have examined the plat as shown, and find that it conforms to the provisions of the Subdivision Ordinance of Olmsted County.
Diane Koehn
Commission Chairman

Instrument of Dedication
KNOW ALL MEN BY THESE PRESENTS: That J. D. Properties, Inc., a Minnesota Corporation, owner and proprietor, and Norwest Bank Rochester, N.A., a United States Corporation, mortgagee of the following described property situated in the County of Olmsted, State of Minnesota to wit:

The East One-Half of the Southwest Quarter of Section 10, Township 106 North, Range 13 West, Olmsted County, Minnesota, less that part thereof platted as Country Creek First Subdivision. Contains 36.08 acres

have caused the same to be surveyed and platted as COUNTRY CREEK SECOND SUBDIVISION and do hereby donate and dedicate to the public for the public use forever the thoroughfare and also dedicate the easements as shown on this plat for drainage and utility purposes only.

In witness whereof said J. D. Properties, Inc. has caused these presents to be signed by its proper officers this 4th day of AUGUST, 1983.

James C. Donlinger
James C. Donlinger, President

Diane L. Donlinger
Diane L. Donlinger, Secretary - Treasurer

State of Minnesota
County of Olmsted
The foregoing instrument was acknowledge before me this 4th day of August, 1983, by James C. Donlinger, its President, and Diane L. Donlinger, its Secretary-Treasurer, officers of J. D. Properties, Inc., on behalf of the corporation.

William E. Tontton
Notary Public, Olmsted County, Minnesota

My commission expires August 4, 1989

In witness whereof said Norwest Bank Rochester, N.A. has caused these presents to be signed by its proper officers this 25th day of August, 1983.

Mark D. Knutson
State of Minnesota
County of Olmsted

The foregoing instrument was acknowledge before me this 25th day of August, 1983, by David G. Wittenberg its Vice President and Mark D. Knutson its Commercial Real Estate officers of Norwest Bank Rochester, N.A. on behalf of the corporation.

Judy L. Bower
Notary Public, Olmsted County, Minnesota

My commission expires 4/4/90

Tax Statement cont.
Taxes due and payable for the year 1983 have been paid.
Bob Ryan
Olmsted County Treasurer Date Sept 23, 1983

Utility Easement Defined
An unobstructed easement for the construction and maintenance of all necessary overhead, underground, or surface public utilities including rights to conduct drainage and trimming on said easement.

OFFICIAL PLAT

B.M. ELEV. 1106.81
SPIKE IN OAK TREE
SOUTH SIDE LOT 1, BLOCK 2,
SUNNY MEADOWS SUBDIVISION

PREPARED BY:
MCGHIE & BETTS, INC.
CONSULTING ENGINEERS
LAND SURVEYORS
ROCHESTER, MINNESOTA