

NORTHVIEW VILLAGE REPLAT

NOTE:
 ALL MONUMENTS SHOWN THUS: ○
 ARE 5/8" I.D. CAPPED PIPES SET
 WITH REGISTRATION NO 11622
 MONUMENTS SHOWN THUS: ●
 ARE FOUND 5/8" PIPES.
 BASIS OF BEARING SYSTEM:
 ALL BEARINGS ARE IN RELATIONSHIP
 WITH THE NORTH PLAT LIMIT LINE
 WHICH IS ASSUMED TO BE N89°42'30"E

Surveyor's Certificate
 I hereby certify that I have surveyed and platted the property described on this plat as NORTHVIEW VILLAGE REPLAT; that this is a correct representation of the survey; that all distances are correctly shown on the plat in feet and hundredths of a foot; that all monuments have been correctly placed in the ground as shown; that the outside boundary lines are correctly designated on the plat; and that there are no wet lands or public highways to be designated on said plat other than as shown thereon.

James E. Swanson
 James E. Swanson, R.L.S.
 Minnesota Registration Number 11622

County Surveyor
 I certify that this plat has been checked mathematically and that the plat conforms to the applicable platting laws, this 19th day of July, 1983.

Roger W. Brand
 Roger W. Brand
 Olmsted County Surveyor

State of Minnesota
 County of Olmsted
 The surveyor's certificate was subscribed and sworn to before me, a Notary Public, this 6th day of July, 1983.

William E. Tointon
 William E. Tointon
 Notary Public, Olmsted County, Minnesota
 My commission expires [Stamp]

City Approval
 State of Minnesota
 County of Olmsted
 City of Rochester

I, Carole A. Grimm, City Clerk in and for the City of Rochester, do hereby certify that on the 18th day of July, 1983, the accompanying plat was duly approved by the Common Council of the City of Rochester. In testimony thereof I have hereunto signed my name and affixed the seal of said City of Rochester this 20th day of July, 1983.

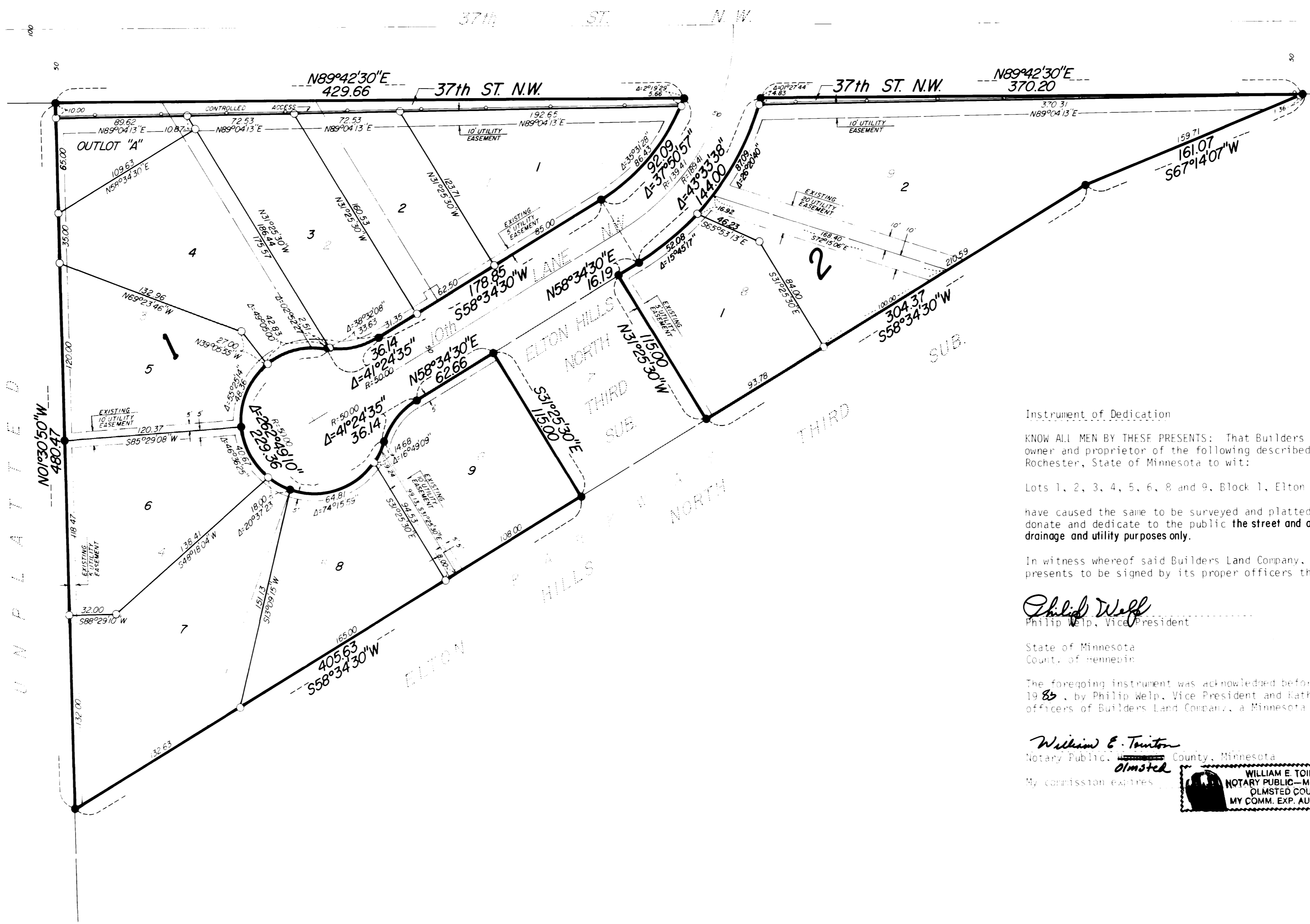
Carole A. Grimm
 Carole A. Grimm
 City Clerk

Tax Statement
 Taxes due and payable for the year 1983 have been paid.
Bob Ryan
 Bob Ryan
 Karen Cocker deputy
 Olmsted County Treasurer

Date July 25th, 1983
 No delinquent taxes due and transfer entered this 25th day of July, 1983.

Melva Nelson
 Melva Nelson, Deputy
 County Auditor

Catherine L. Evans
 Catherine L. Evans
 County Recorder



Instrument of Dedication
 KNOW ALL MEN BY THESE PRESENTS: That Builders Land Company, a Minnesota corporation, owner and proprietor of the following described property situated in the City of Rochester, State of Minnesota to wit:
 Lots 1, 2, 3, 4, 5, 6, 8 and 9, Block 1, Elton Hills North Third Subdivision
 have caused the same to be surveyed and platted as NORTHVIEW VILLAGE REPLAT and do hereby donate and dedicate to the public the street and also dedicate the easements as shown on this plat for drainage and utility purposes only.
 In witness whereof said Builders Land Company, a Minnesota Corporation has caused these presents to be signed by its proper officers this 6th day of July, 1983.
Philip Welp Philip Welp, Vice President
Kathleen R. Anderson Kathleen R. Anderson, Assistant Secretary
 State of Minnesota
 County of Olmsted
 The foregoing instrument was acknowledged before me this 6th day of July, 1983, by Philip Welp, Vice President and Kathleen R. Anderson, Assistant Secretary, officers of Builders Land Company, a Minnesota Corporation on behalf of the corporation.

William E. Tointon
 William E. Tointon
 Notary Public, Olmsted County, Minnesota
 My commission expires [Stamp]

County Recorder
 DOCUMENT NUMBER
 I hereby certify that this instrument was filed in the Office of the County Recorder for record on this 26th day of July, 1983, at 8:20 o'clock A.M., and was duly recorded in the Olmsted County records.
 County Recorder
 Utility Easement Defined
 An unobstructed easement for the construction and maintenance of all necessary overhead, underground, or surface public utilities including rights to conduct drainage and trimming on said easement.
 A public access defined: Ingress or egress to, from, or across the abutting roadway 37th ST. N.W. is restricted by Olmsted County, Minnesota, and said right of access is hereby dedicated to said road authority.

OFFICIAL PLAT

PREPARED BY
 NORTHVIEW VILLAGE REPLAT
 NORTHVIEW VILLAGE REPLAT