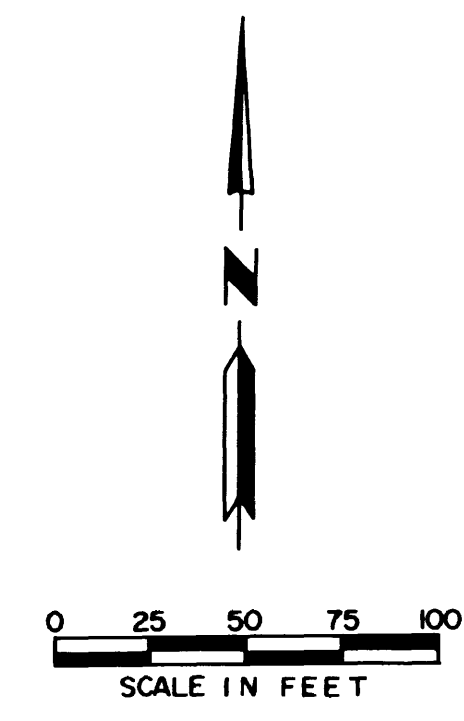
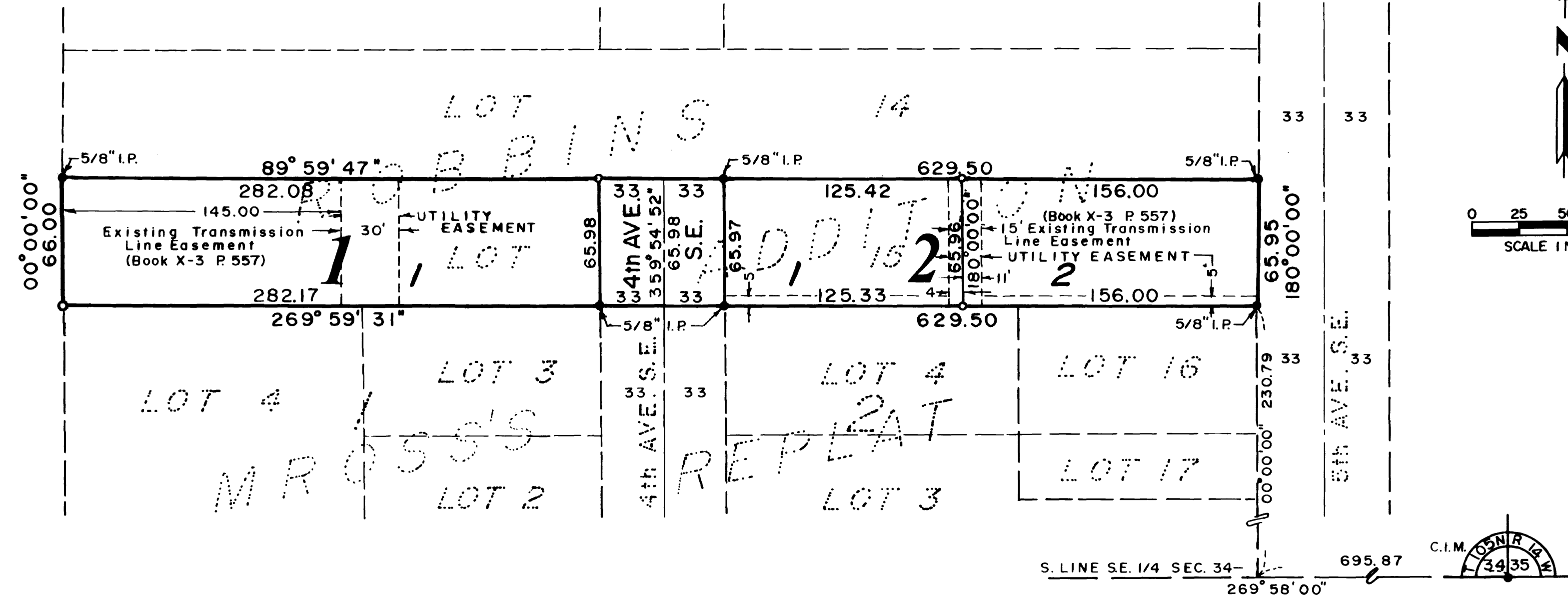
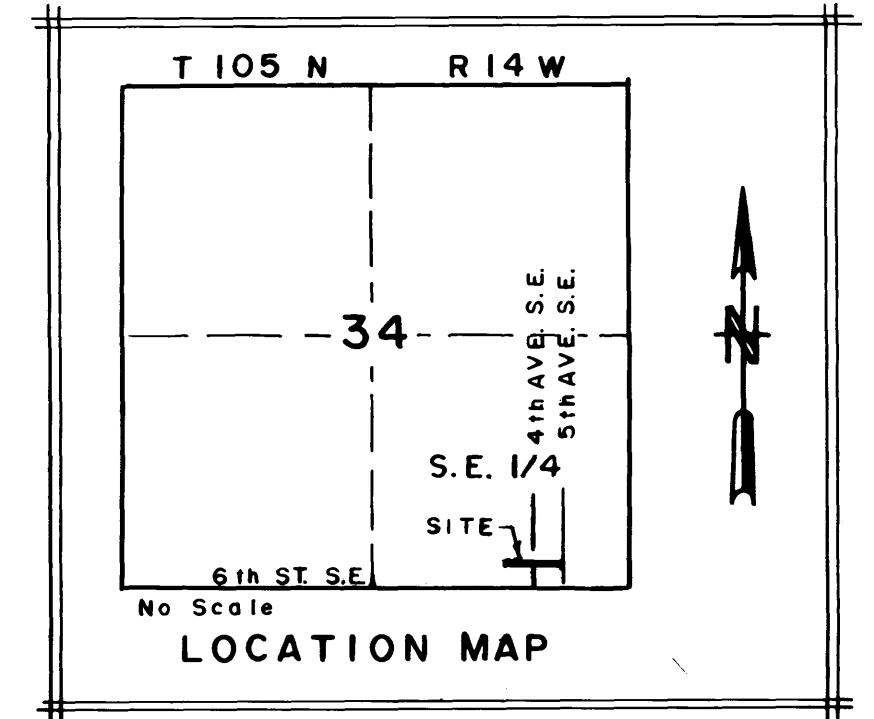


ROBBINS SECOND SUBDIVISION

UNPLATTED



BEARINGS
Plat bearings are azimuths measured to the right from an assumed north.

All monuments set have a plastic cap stamped R.L.S. 10162.

MONUMENTS

- 1/2" Rebars
- 3/4" Iron Pipes
- Found Monument (As Shown)

INSTRUMENT OF DEDICATION

KNOW ALL MEN BY THESE PRESENTS: That Oliver J. Renken and Irene E. Renken, his wife, owners and proprietors of the following described property situated in the County of Olmsted, State of Minnesota, to wit:

All of Lot 15 of Block One, Robbins Addition to the Village of Stewartville, according to the plat thereof on file in the County Recorders Office, Olmsted County, Minnesota.

Has caused the same to be surveyed and platted as ROBBINS SECOND SUBDIVISION and do hereby donate and dedicate to the public for public use forever the thoroughfares and grant the easements as shown on this plat.

In witness whereof said Oliver J. Renken and Irene E. Renken have hereunto set their hands this 5 day of July, 1983.

Oliver J. Renken _____ Irene E. Renken *Irene E. Renken*
STATE OF MINNESOTA
COUNTY OF OLMSTED

The foregoing instrument was acknowledged before me this 05 day of July, 1983 by Oliver J. Renken and Irene E. Renken.

John V. Borchering
Notary Public, Olmsted County, MN
My Commission Expires 12/31/85

SURVEYOR'S CERTIFICATE

I do hereby certify that I have surveyed and replatted the property described on this plat as ROBBINS SECOND SUBDIVISION that this plat is a correct representation of said survey, that all distances are correctly shown on said plat in feet and hundredths of a foot, that all monuments have been correctly placed in the ground as shown, that the outside boundary lines are correctly designated and that there are no wetlands or public highways to be designated on said plat other than as shown.

Donald R. Borchering
DONALD R. BORCHERING
Minnesota R.S.L. 10162

STATE OF MINNESOTA
COUNTY OF OLMSTED

The foregoing Surveyor's Certificate was acknowledged before me this _____ day of July, 1983 by Donald R. Borchering, R.L.S. 10162.

John V. Borchering
Notary Public, Olmsted County, MN
My Commission Expires 12/31/85

UTILITY EASEMENT DEFINED

An unobstructed easement for the construction and maintenance of all necessary overhead, underground, or surface public utilities, including rights to conduct drainage and trimming on said easement.

COUNTY SURVEYOR

I certify that this plat has been checked mathematically and that the plat conforms to the applicable platting laws.

Approved this 15th day of July, 1983
Robert W. Brand
Olmsted County Surveyor

CITY APPROVAL

State of Minnesota
County of Olmsted
City of Stewartville

I, Jonathan H. Pearson, City Clerk, in and for the City of Stewartville, do hereby certify that on the 2nd day of July, 1983, the accompanying plat was duly approved by the Common Council of the City of Stewartville. In testimony whereof, I have hereunto signed my name and affixed the Seal of said City of Stewartville this 15th day of July, 1983.

Jonathan H. Pearson
City Clerk

COUNTY RECORDER

Document Number _____
I hereby certify that this instrument was filed in the office of the County Recorder for record on this 19th day of July, 1983, at 8 o'clock A.M. and was duly recorded in Olmsted County Records.

Lair Finstrom
Olmsted County Recorder
By *Nancy Johnson* Deputy

COUNTY AUDITOR

No delinquent taxes due and transfer entered this 18th day of July, 1983.

Ross Browning
Olmsted County Auditor
By *Melba Nelson* Deputy

COUNTY TREASURER

Taxes due and payable for the year 1983, have been paid as of this 18th day of July, 1983.

Bob Ryan
Olmsted County Treasurer
Karen Coker deputy

PREPARED BY
YAGGY ASSOCIATES, INC.
CONSULTING ENGINEERS ■ PLANNERS ■ SURVEYORS
ROCHESTER, MINNESOTA ■ MASON CITY, IOWA