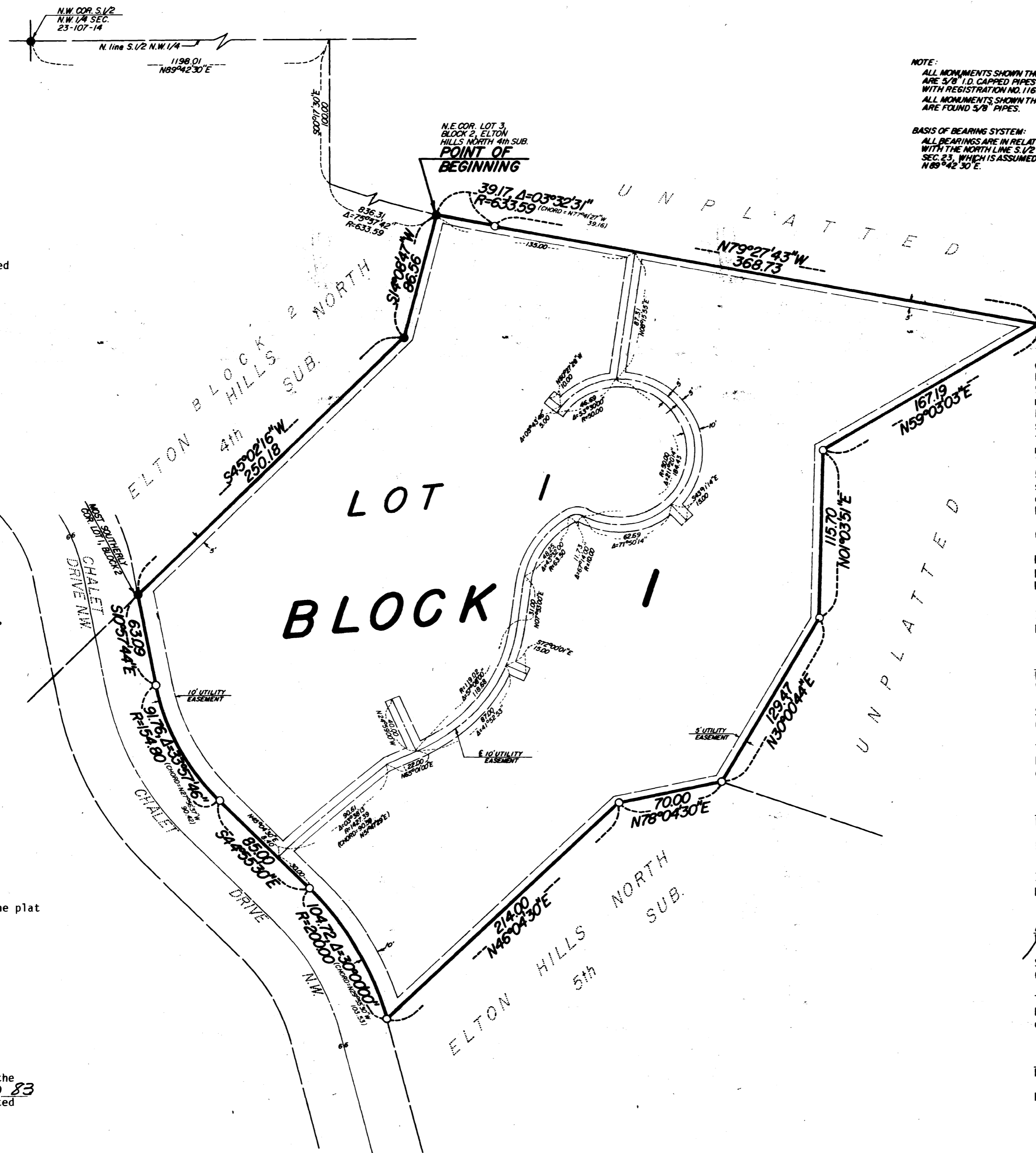
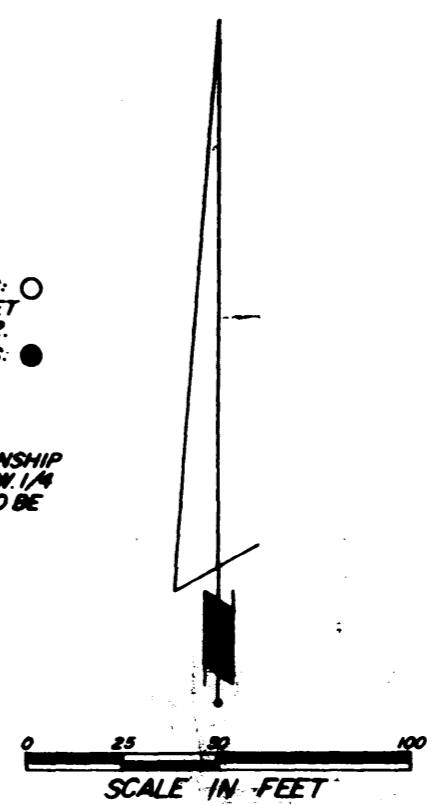


ELTON RIDGE



NOTE:
 ALL MONUMENTS SHOWN THUS: ○
 ARE 5/8" I.D. CAPPED PIPES SET
 WITH REGISTRATION NO. 11622.
 ALL MONUMENTS SHOWN THUS: ●
 ARE FOUND 3/8" PIPES.
 BASIS OF BEARING SYSTEM:
 ALL BEARINGS ARE IN RELATIONSHIP
 WITH THE NORTH LINE S. 1/2 N.W. 1/4
 SEC. 23, WHICH IS ASSUMED TO BE
 N 89° 42' 30" E.



Instrument of Dedication
 KNOW ALL MEN BY THESE PRESENTS: That Builders Land Company, a Minnesota Corporation, fee owner, and optionor under that certain written, but unrecorded option agreement dated October 29, 1982, and Elcor Enterprises Inc., a Minnesota Corporation, optionee under that certain written, but unrecorded option agreement dated October 29, 1982, of the following described property situated in the City of Rochester, State of Minnesota to wit:

A part of the South One-Half of the Northwest Quarter of Section 23, Township 107 North, Range 14 West, Olmsted County, Minnesota, described as follows:

Commencing at the northwest corner of the South One-Half of said Northwest Quarter; thence North 89 degrees 42 minutes 30 seconds East, assumed bearing, along the north line of said South One-Half, 1198.01 feet; thence South 00 degrees 17 minutes 30 seconds East, 100.00 feet; thence Southeasterly, 836.31 feet along a tangential curve concave to the East, central angle of 75 degrees 37 minutes 42 seconds, and radius of 633.59 feet, to the northeast corner of Lot 3, Block 2, Elton Hills North Fourth Subdivision for a point of beginning; thence South 14 degrees 08 minutes 47 seconds West, along the easterly line of said Block 2 a distance of 86.56 feet; thence South 45 degrees 02 minutes 16 seconds West, along the easterly line of said Block 2 a distance of 250.18 feet to the most southerly corner of Lot 1 of said Block 2; thence South 10 degrees 57 minutes 44 seconds East, 63.09 feet; thence Southeasterly 91.76 feet along a tangential curve concave northeasterly, central angle of 33 degrees 57 minutes 46 seconds and radius of 154.80 feet; thence South 44 degrees 55 minutes 30 seconds East, 85.00 feet; thence Southeasterly, 104.72 feet along a tangential curve concave southwesterly, central angle of 30 degrees 00 minutes 00 seconds and radius of 200.00 feet; thence North 46 degrees 04 minutes 30 seconds East, 214.00 feet; thence North 78 degrees 04 minutes 30 seconds East, 70.00 feet; thence North 30 degrees 00 minutes 44 seconds East, 129.47 feet; thence North 01 degrees 03 minutes 51 seconds East, 115.70 feet; thence North 59 degrees 03 minutes 03 seconds East, 167.19 feet; thence North 79 degrees 27 minutes 43 seconds West, 368.73 feet; thence Westerly 39.17 feet along a tangential curve concave northerly central angle of 03 degrees 32 minutes 31 seconds, and radius of 633.59 feet to the point of beginning.

Containing 3.77 acres, more or less.
 have caused the same to be surveyed and platted as ELTON RIDGE and do hereby dedicate to the public for the public use forever the easements as shown on this plat for drainage and utility purposes only.

In witness whereof said Builders Land Company, a Minnesota Corporation has caused these presents to be signed by its proper officers this 9th day of May, 1983.
 Kathleen R. Anderson, Assistant Vice President
 Richard J. Clough, Secretary

State of Minnesota
 County of Hennepin
 The foregoing instrument was acknowledge before me this 9th day of May, 1983, by Kathleen R. Anderson its Assistant Vice President and Richard J. Clough its Secretary officers of Builders Land Company, a Minnesota Corporation, on behalf of the corporation.
 Cynthia R. Elstad
 Notary Public, Hennepin County, Minnesota
 My commission expires Aug. 10, 1989

In witness whereof said Elcor Enterprises Inc., a Minnesota corporation, has caused these presents to be signed by its proper officers this 2nd day of May, 1983.
 Richard L. Hexum Jr., President

State of Minnesota
 County of Olmsted
 The foregoing instrument was acknowledge before me this 2nd day of May, 1983, by Richard L. Hexum Jr., President of Elcor Enterprises Inc., a Minnesota Corporation, on behalf of the corporation.

William E. Tonison
 Notary Public, Olmsted County, Minnesota
 My commission expires

Surveyor's Certificate
 I hereby certify that I have surveyed and platted the property described on this plat as ELTON RIDGE; that this is a correct representation of the survey; that all distances are correctly shown on the plat in feet and hundredths of a foot; that all monuments have been correctly placed in the ground as shown; and that there are no wet lands or public highways to be designated on said plat other than as shown thereon.

James E. Swanson
 James E. Swanson, R.L.S.
 Minnesota Registration Number 11622

State of Minnesota
 County of Olmsted
 The surveyor's certificate was subscribed and sworn to before me, a Notary Public, this 29th day of April, 1983.

William E. Tonison
 Notary Public, Olmsted County, Minnesota
 My commission expires

City Approval
 State of Minnesota
 County of Olmsted
 City of Rochester

I, Carole A. Grimm, City Clerk in and for the City of Rochester, do hereby certify that on the 14 day of MARCH, 1983, the accompanying plat was duly approved by the Council of the City of Rochester. In testimony thereof I have hereunto signed my name and affixed the seal of said City of Rochester this 20 day of MAY, 1983.

Carole A. Grimm
 City Clerk

Tax Statement
 No delinquent taxes due and transfer entered this 23 day of May, 1983.

Good Drawing by
 County Auditor Maena W. Anderson, Deputy

County Surveyor
 I certify that this plat has been check mathematically and that the plat conforms to the applicable platting laws, this 29th day of April, 1983.

Roger W. Brand
 Olmsted County Surveyor

County Recorder
 DOCUMENT NUMBER 454426

I hereby certify that this instrument was filed in the Office of the County Recorder for record on this 23 day of May, 1983 at 4:12 o'clock P.M., and was duly recorded in the Olmsted County records.

By LOIS FINSTUEN
 County Recorder
Carole M. Ferrer
 Deputy

Utility Easement Defined
 An unobstructed easement for the construction and maintenance of all necessary overhead, underground, or surface public utilities including rights to conduct drainage and trimming on said easement.

OFFICIAL PLAT
 PREPARED BY:
 MCGHIE & BETTS, INC.
 CONSULTING ENGINEERS
 LAND SURVEYORS
 ROCHESTER, MINNESOTA