

CIMARRON SUBDIVISION

Surveyor's Certificate

I hereby certify that I have surveyed and platted the property described on this plat as CIMARRON SUBDIVISION; that this is a correct representation of the survey; that all distances are correctly shown on the plat in feet and hundredths of a foot; that all monuments have been correctly placed in the ground as shown; that the outside boundary lines are correctly designated on the plat; and that there are no wet lands or public highways to be designated on said plat other than as shown thereon.

James E. Swanson
James E. Swanson, R.L.S.
Minnesota Registration Number 11622

State of Minnesota
County of Olmsted

The surveyor's certificate was subscribed and sworn to before me, a Notary Public, this 26th day of March, 1983.

William E. Trinton
Notary Public, Olmsted County, Minnesota

My commission expires _____

City Approval

State of Minnesota
County of Olmsted
City of Rochester

I, Carole A. Grimm, City Clerk in and for the City of Rochester, do hereby certify that on this 18 day of April, 1983, the accompanying plat was duly approved by the Common Council of the City of Rochester. In testimony thereof I have hereunto signed my name and affixed the seal of said City of Rochester this 21 day of April, 1983.

Carole A. Grimm
City Clerk

County Recorder

DOCUMENT NUMBER _____

I hereby certify that this instrument was filed in the Office of the County Recorder for record on this 26th day of April, 1983, at 8 1/2 o'clock A.M., and was duly recorded in the Olmsted County records.

Lois Finstrom
County Recorder

Dancy Johnson
Deputy

Tax Statement

No delinquent taxes due and transfer entered this 26 day of April, 1983.

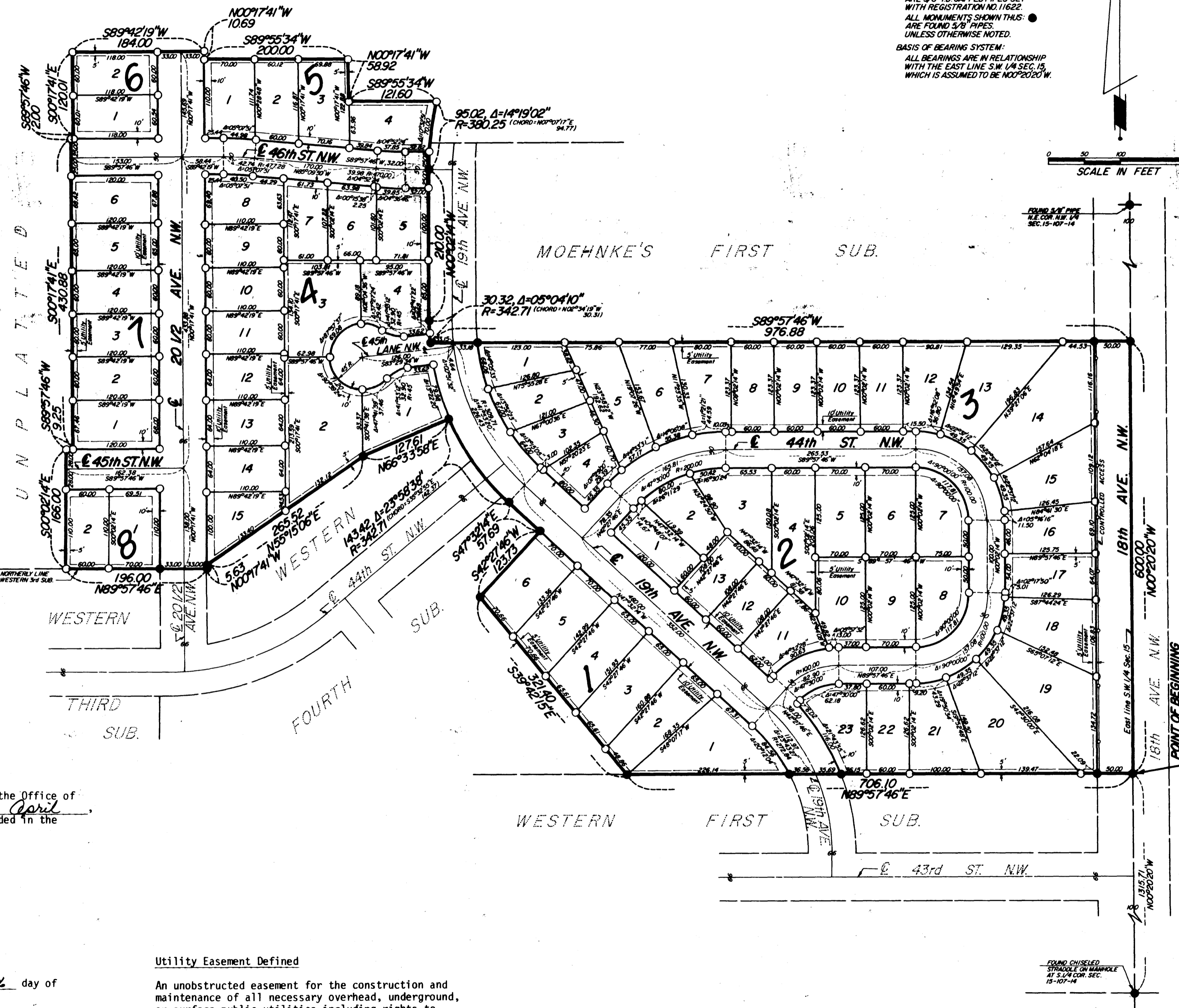
Ross Brauning
County Auditor
Melvin Nelson, Deputy

County Surveyor

I certify that this plat has been check mathematically and that the plat conforms to the applicable platting laws, this 29th day of March, 1983.

Robert W. Brand
Olmsted County Surveyor

UNPLATTED



NOTE:
ALL MONUMENTS SHOWN THIS: ○
ARE 5/8" I.D. CAPPED PIPES SET
WITH REGISTRATION NO. 11622.
ALL MONUMENTS SHOWN THIS: ●
ARE FOUND 5/8" PIPES,
UNLESS OTHERWISE NOTED.
BASIS OF BEARING SYSTEM:
ALL BEARINGS ARE IN RELATIONSHIP
WITH THE EAST LINE S.W. 1/4 SEC. 15,
WHICH IS ASSUMED TO BE N00°20'20"W.

Instrument of Dedication

KNOW ALL MEN BY THESE PRESENTS: That Western Walls Inc., a Minnesota Corporation, owner and proprietor of the following described property situated in the City of Rochester, State of Minnesota to wit:

A part of the Southwest Quarter of Section 15, Township 107 North, Range 14 West, Olmsted County, Minnesota described as follows:

Commencing at the southeast corner of said Southwest Quarter; thence North 00 degrees 20 minutes 20 seconds West, assumed bearing, along the east line of said Southwest Quarter, 1315.71 feet to the southeast corner of the Northeast Quarter of said Southwest Quarter for a point of beginning; thence continue North 00 degrees 20 minutes 20 seconds West along said east line, 600.00 feet; thence South 89 degrees 57 minutes 46 seconds West, 976.88 feet; thence northerly 30.32 feet along a nontangential curve, concave easterly, central angle of 05 degrees 04 minutes 10 seconds, radius of 342.71 feet and the chord of said curve bears North 02 degrees 34 minutes 19 seconds West, 30.31 feet; thence North 00 degrees 02 minutes 14 seconds West, 210.00 feet; thence northerly 95.02 feet along a tangential curve, concave easterly, central angle of 14 degrees 19 minutes 02 seconds, and radius of 380.25 feet; thence South 89 degrees 55 minutes 34 seconds West, 121.60 feet; thence North 00 degrees 17 minutes 41 seconds West, 58.92 feet; thence South 89 degrees 55 minutes 34 seconds West, 200.00 feet; thence North 00 degrees 17 minutes 41 seconds West, 10.69 feet; thence South 89 degrees 42 minutes 19 seconds West, 184.00 feet; thence South 00 degrees 17 minutes 41 seconds East, 120.01 feet; thence South 89 degrees 57 minutes 46 seconds West, 2.00 feet; thence South 00 degrees 17 minutes 41 seconds East, 430.88 feet; thence South 89 degrees 57 minutes 46 seconds West, 9.25 feet; thence South 00 degrees 02 minutes 14 seconds East, 166.00 feet to the northerly line of Western Third Subdivision; thence North 89 degrees 57 minutes 46 seconds East along said northerly line, 196.00 feet; thence North 00 degrees 17 minutes 41 seconds West, 5.63 feet; thence North 55 degrees 15 minutes 06 seconds East, 265.52 feet; thence North 66 degrees 33 minutes 58 seconds East, 127.61 feet; thence southeasterly 143.42 feet along a nontangential curve, concave northeasterly, central angle of 23 degrees 58 minutes 38 seconds, radius of 342.71 feet and the chord of said curve bears South 35 degrees 32 minutes 55 seconds East, 142.37 feet; thence South 47 degrees 32 minutes 14 seconds East, 57.69 feet; thence South 42 degrees 27 minutes 46 seconds West, 123.73 feet; thence South 39 degrees 42 minutes 15 seconds East, 321.40 feet to the south line of the Northeast Quarter of said Southwest Quarter; thence North 89 degrees 57 minutes 46 seconds East along said south line, 706.10 feet to the point of beginning.

Containing 19.19 acres more or less

have caused the same to be surveyed and platted as CIMARRON SUBDIVISION and do hereby donate and dedicate to the public for the public use forever the thoroughfares and also dedicate the easements as shown on this plat for drainage and utility purposes only.

In witness whereof said Western Walls, Inc., a Minnesota Corporation, has caused these presents to be signed by its proper officer this 29 day of MARCH, 1983.

Robert D. Dewitz
Robert D. Dewitz, President

State of Minnesota
County of Olmsted

The foregoing instrument was acknowledge before me this 29th day of March, 1983, by Robert D. Dewitz, President of Western Walls, Inc., a Minnesota Corporation on behalf of the corporation.

Don M. Peters
Notary Public, Olmsted County, Minnesota

My commission expires August 9, 1989

Utility Easement Defined

An unobstructed easement for the construction and maintenance of all necessary overhead, underground, or surface public utilities including rights to conduct drainage and trimming on said easement.

Controlled Access Defined

Ingress or egress to, from, or across the abutting roadway is restricted by the road authority pursuant to Minnesota State Statute 160.08.

OFFICIAL PLAT

PREPARED BY:
McGHEE & BETTS, INC.
CONSULTING ENGINEERS
LAND SURVEYORS
ROCHESTER, MINNESOTA

CIMARRON SUBDIVISION