

WOODHAVEN THIRD SUBDIVISION

All monuments set have a plastic cap stamped R.L.S. 10162.

MONUMENTS

- 1/2" Re-Bars
- 3/4" Iron Pipes
- Found Monument (Pipe, Rod, Etc.)

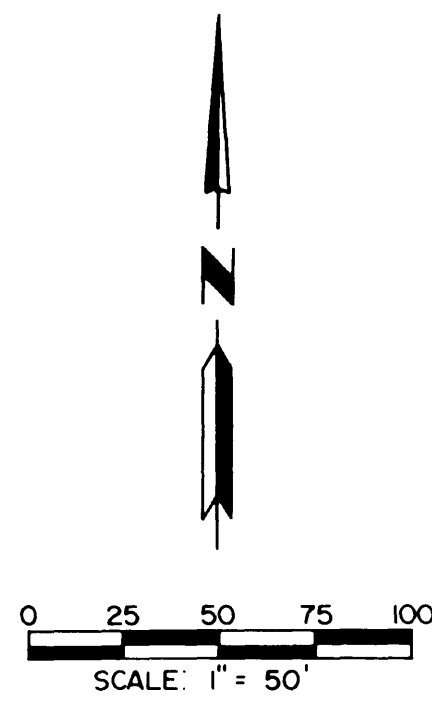
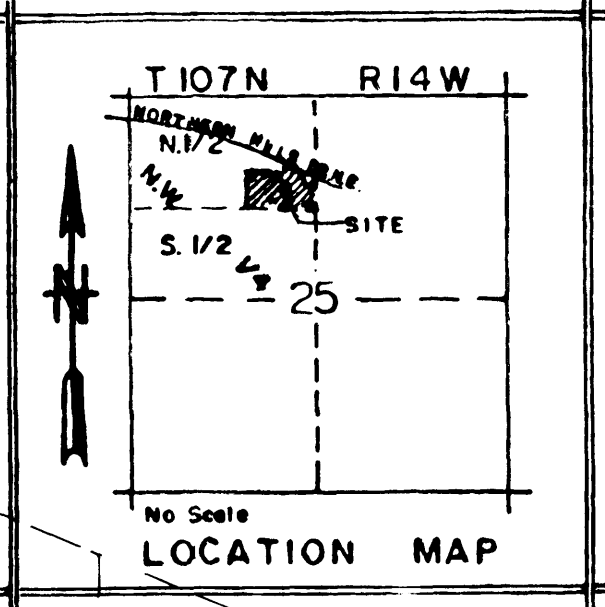
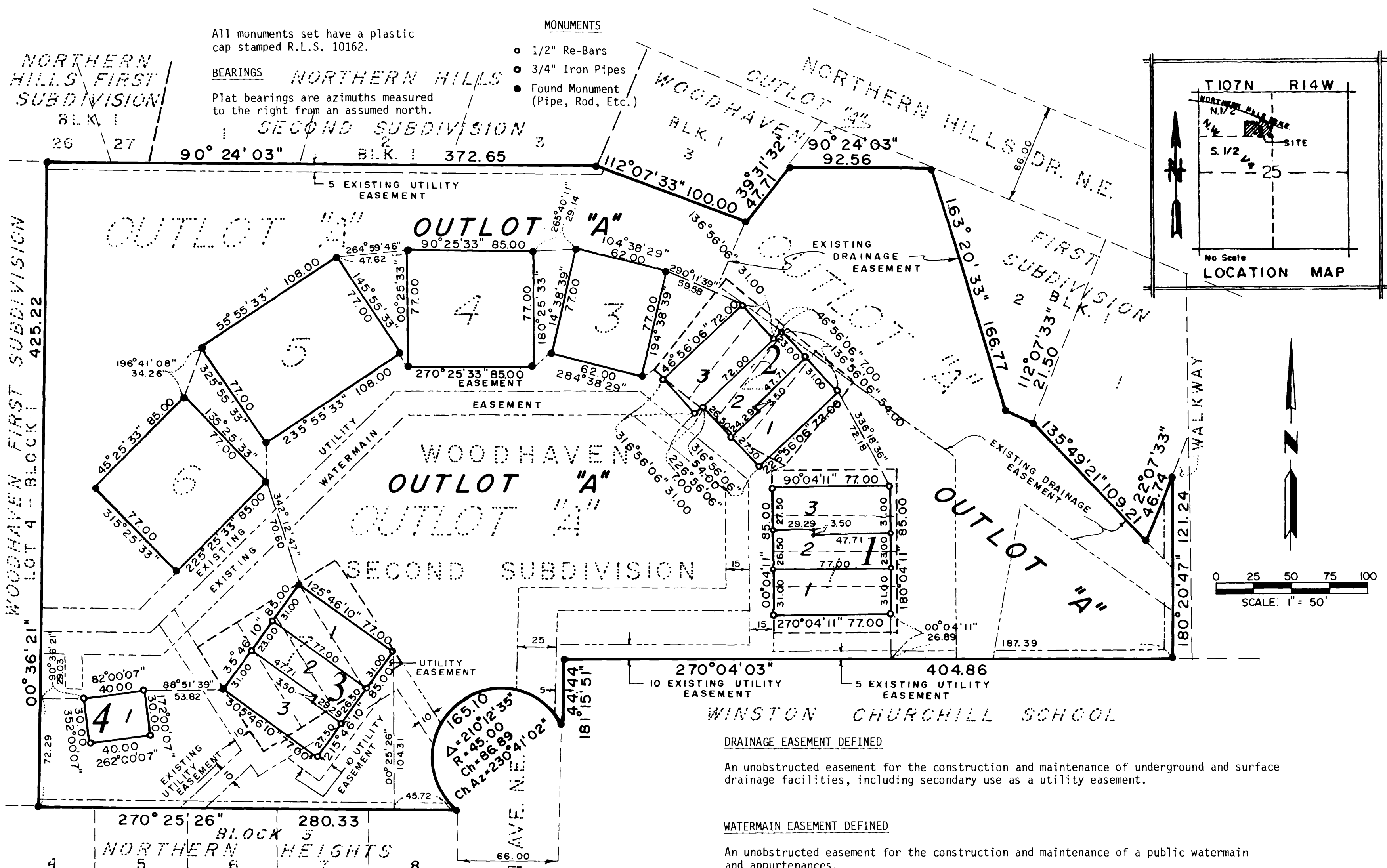
BEARINGS

Plat bearings are azimuths measured to the right from an assumed north.

NORTHERN HILLS FIRST SUBDIVISION BLK. 1

NORTHERN HILLS SECOND SUBDIVISION

WOODHAVEN FIRST SUBDIVISION LOT 4 - BLOCK 1 425.22



INSTRUMENT OF DEDICATION

KNOW ALL MEN BY THESE PRESENTS: That Younge Companies, a partnership consisting of Younge Development Co. and Younge Bros. Construction Co., and Woodhaven Company of Rochester Co., all of which are Minnesota Corporations, owners and proprietors of the following described property situated in the County of Olmsted, State of Minnesota, to wit:

All of Blocks 1, 2, 7 and Outlot "A" of Woodhaven Second Subdivision, according to the plat thereof on file in the County Recorders Office, Olmsted County, Minnesota.

Have caused the same to be surveyed and replatted as WOODHAVEN THIRD SUBDIVISION and do hereby grant the easements as shown on this plat.

In witness whereof said Younge Bros. Construction Co. has caused these presents to be signed by its proper officers this 12th day of April, 1983.

Jerry P. Younge
 Jerry P. Younge, President

Michael J. Younge
 Michael J. Younge, Vice President

STATE OF MINNESOTA
COUNTY OF OLMTSTED

The foregoing instrument was acknowledged before me this 12th day of April, 1983, by Jerry P. Younge and Michael J. Younge, President and Vice President respectively of Younge Bros. Construction Co., a Minnesota Corporation, on behalf of the Corporation.

Donald R. Borchering
 Notary Public, Olmsted County, MN
 My Commission Expires 6/28/85

In witness whereof said Younge Development Co. has caused these presents to be signed by its proper officer this 12th day of April, 1983.

Rodney A. Younge
 Rodney A. Younge, President

STATE OF MINNESOTA
COUNTY OF OLMTSTED

The foregoing instrument was acknowledged before me this 12th day of April, 1983, by Rodney A. Younge, President of Younge Development Co., a Minnesota Corporation, on behalf of the Corporation.

Donald R. Borchering
 Notary Public, Olmsted County, MN
 My Commission Expires 6/28/85

In witness whereof said Woodhaven Company of Rochester Co. has caused these presents to be signed by its proper officers this 12th day of April, 1983.

Rodney A. Younge
 Rodney A. Younge, President

Jerry P. Younge
 Jerry P. Younge, Vice President

STATE OF MINNESOTA
COUNTY OF OLMTSTED

The foregoing instrument was acknowledged before me this 12th day of April, 1983, by Rodney A. Younge and Jerry P. Younge, President and Vice President respectively of Woodhaven Company of Rochester Co., a Minnesota Corporation, on behalf of the Corporation.

Donald R. Borchering
 Notary Public, Olmsted County, MN
 My Commission Expires 6/28/85

COUNTY SURVEYOR

I certify that this plat has been checked mathematically and that the plat conforms to the applicable platting laws.

Approved this 12th day of April, 1983

Robert W. Brand
 Robert W. Brand
 Olmsted County Surveyor

UTILITY EASEMENT DEFINED

An unobstructed easement for the construction and maintenance of all necessary overhead, underground, or surface public utilities, including rights to conduct drainage and trimming on said easement.

SURVEYOR'S CERTIFICATE

I do hereby certify that I have surveyed and replatted the property described on this plat as WOODHAVEN THIRD SUBDIVISION, that this plat is a correct representation of said survey, that all distances are correctly shown on said plat in feet and hundredths of a foot, that all monuments have been correctly placed in the ground as shown, that the outside boundary lines are correctly designated and that there are no wetlands or public highways to be designated on said plat other than as shown.

Donald R. Borchering
 DONALD R. BORCHERING
 Minnesota R.L.S. 10162

STATE OF MINNESOTA
COUNTY OF OLMTSTED

The foregoing Surveyor's Certificate was acknowledged before me this 12th day of April, 1983 by Donald R. Borchering, Minnesota R.L.S. No. 10162.

Notary Public
 Notary Public, Olmsted County, MN
 My Commission Expires 12-21-85

DRAINAGE EASEMENT DEFINED

An unobstructed easement for the construction and maintenance of underground and surface drainage facilities, including secondary use as a utility easement.

WATERMAIN EASEMENT DEFINED

An unobstructed easement for the construction and maintenance of a public watermain and appurtenances.

COUNTY AUDITOR

No delinquent taxes due and transfer entered this 8th day of April, 1983

Ross Branning
 Ross Branning, by
 Olmsted County Auditor
Melvin Nelson, Deputy

COUNTY REGISTRAR OF TITLES

Document Number 36634

I hereby certify that this instrument was filed in the office of the County Registrar of Titles for record on this 8th day of April, 1983, at 4 o'clock P.M. and was duly recorded in Olmsted County Records.

Shirley Simister
 Shirley Simister
 Olmsted County Registrar of Titles

CITY APPROVAL

State of Minnesota
County of Olmsted
City of Rochester

I, Carole A. Grimm, City Clerk, in and for the City of Rochester, do hereby certify that on the 4 day of April, 1983, the accompanying plat was duly approved by the Common Council of the City of Rochester. In testimony whereof, I have hereunto signed my name and affixed the Seal of said City of Rochester this 5 day of April, 1983.

Carole A. Grimm
 Carole A. Grimm
 City Clerk