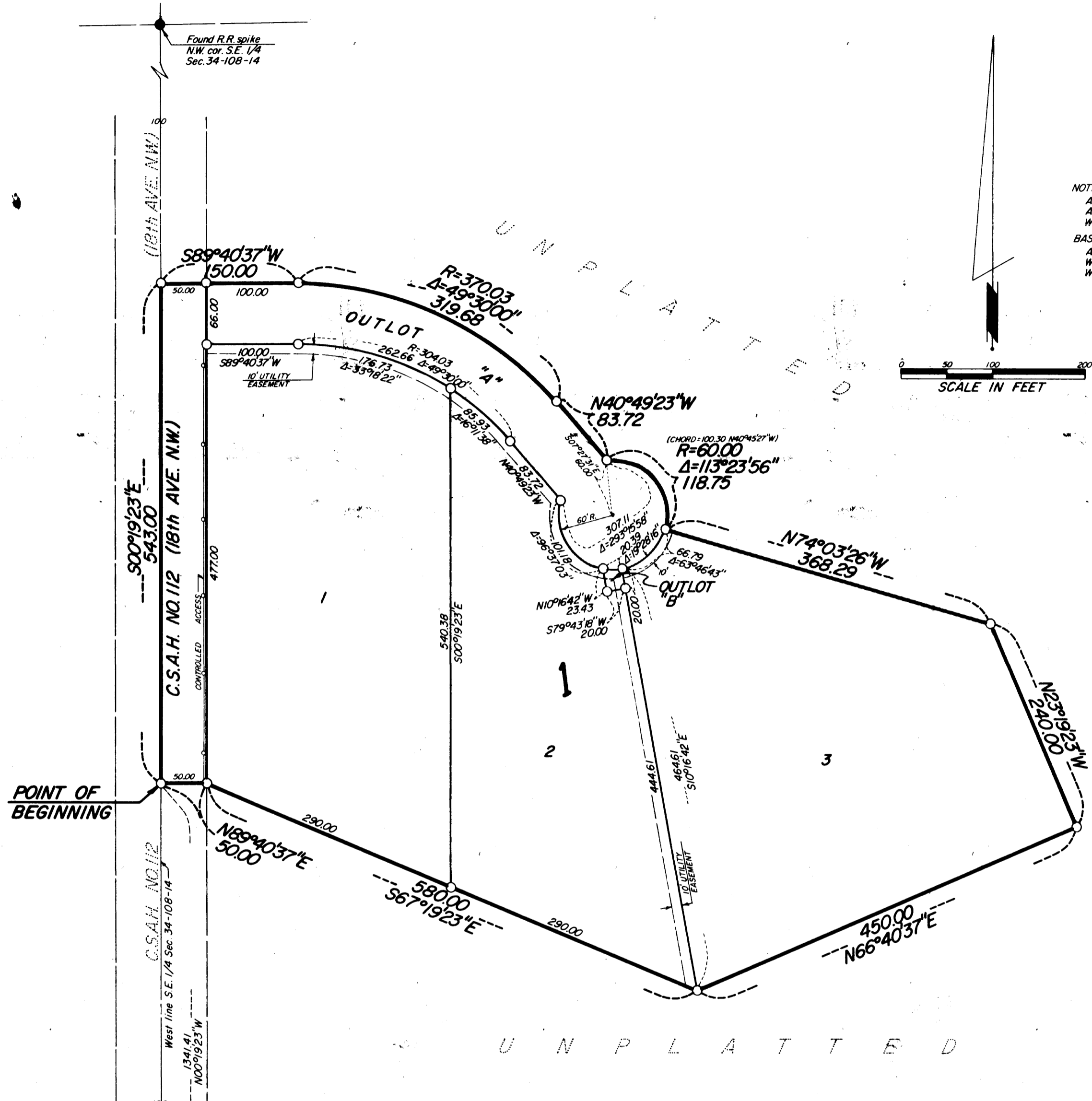
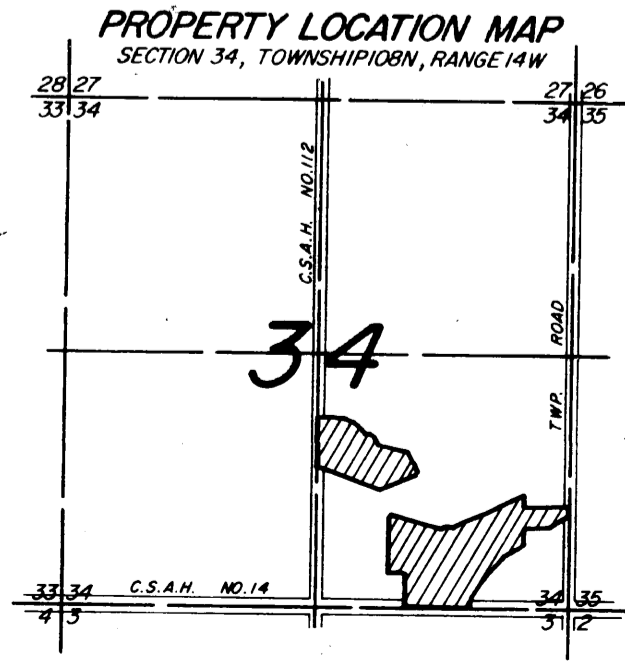


SAFARI ESTATES



NOTE:
ALL MONUMENTS SHOWN THIS: ○
ARE 5/8" I.D. CAPPED PIPES SET
WITH REGISTRATION NO. 11622.
BASIS OF BEARING SYSTEM:
ALL BEARINGS ARE IN RELATIONSHIP
WITH THE WEST LINE S.E. 1/4 SEC. 34,
WHICH IS ASSUMED TO BE $N00^{\circ}19'23''W$.



Instrument of Dedication

KNOW ALL MEN BY THESE PRESENTS: That Robert D. DeWitz and Beverly A. DeWitz, owners and proprietors, and Federal Land Bank of St. Paul, mortgagee of the following described property situated in the County of Olmsted, State of Minnesota to-wit:

A part of the Southeast Quarter of Section 34, Township 108 North, Range 14 West, Olmsted County, Minnesota described as follows:
Commencing at the southwest corner of said Southeast Quarter; thence North 00 degrees 19 minutes 23 seconds West, assumed bearing along the west line of said Southeast Quarter, a distance of 1341.41 feet for a point of beginning; thence North 89 degrees 40 minutes 37 seconds East, 50.00 feet; thence South 67 degrees 19 minutes 23 seconds East, 240.00 feet; thence North 66 degrees 40 minutes 37 seconds East, 450.00 feet; thence North 23 degrees 19 minutes 23 seconds East, 240.00 feet; thence North 74 degrees 03 minutes 26 seconds West, 368.29 feet; thence Northerly 118.75 feet along a nontangential curve, concave southwesterly, central angle of 113 degrees 23 minutes 56 seconds, radius of 60.00 feet, and the chord of said curve bears North 40 degrees 45 minutes 27 seconds West, 100.30 feet; thence North 40 degrees 49 minutes 23 seconds West, 83.72 feet; thence Northwesterly 319.68 feet along a tangential curve, concave southwesterly, central angle of 49 degrees 30 minutes 00 seconds and radius of 370.03 feet; thence South 89 degrees 40 minutes 37 seconds West, 150.00 feet to the west line of said Southeast Quarter; thence South 00 degrees 19 minutes 23 seconds East, along said west line, 543.00 feet to the point of beginning.

Also:
Commencing at the southwest corner of said Southeast Quarter; Thence North 90 degrees 00 minutes 00 seconds East, assumed bearing along the south line of said Southeast Quarter a distance of 914.76 feet for a point of beginning; thence North 00 degrees 19 minutes 23 seconds West, 400.00 feet; thence South 90 degrees 00 minutes 00 seconds West, 200.00 feet; thence North 02 degrees 18 minutes 18 seconds East, 606.85 feet; thence South 73 degrees 25 minutes 00 seconds East, 661.94 feet; thence Northeasterly 89.13 feet along a nontangential curve, concave southeasterly, central angle of 85 degrees 07 minutes 00 seconds, radius of 60.00 feet, and the chord of said curve bears North 59 degrees 08 minutes 30 seconds East, 81.16 feet; thence North 62 degrees 04 minutes 38 seconds East, 762.08 feet; thence South 00 degrees 12 minutes 27 seconds East, 175.00 feet; thence North 90 degrees 00 minutes 00 seconds East, 518.00 feet to the east line of said Southeast Quarter; thence South 00 degrees 12 minutes 27 seconds East, along said east line, 200.00 feet; thence South 90 degrees 00 minutes 00 seconds West, 518.00 feet; thence South 00 degrees 12 minutes 27 seconds East, 840.93 feet to the south line of said Southeast Quarter; thence South 90 degrees 00 minutes 00 seconds West, along said south line a distance of 1204.00 feet to the point of beginning.

Containing 42.41 acres more or less.

have caused the same to be surveyed and platted as SAFARI ESTATES and do hereby donate and dedicate to the public use forever, the thoroughfares and also dedicate the easements as shown on this plat for drainage and utility purposes only.

In witness whereof said Robert D. DeWitz and Beverly A. DeWitz have caused these presents to be signed this 17th day of March 1983.

Robert D. DeWitz
Robert D. DeWitz

Beverly A. DeWitz
Beverly A. DeWitz

State of Minnesota
County of Olmsted

The foregoing instrument was acknowledged before me this 17th day of March 1983 by Robert D. DeWitz and Beverly A. DeWitz, husband and wife

Donal M. R. [Signature]
Notary Public, Olmsted County, Minnesota

My commission expires August 4, 1989

In witness whereof said Federal Land Bank of St. Paul has caused these presents to be signed by its proper officers this 16th day of March 1983.

Chris A. Schlegel
Chris A. Schlegel - Vice President

Donald F. Hathaway
Donald F. Hathaway - Asst. Secretary

State of Minnesota
County of Ramsey

The foregoing instrument was acknowledged before me this 16th day of March 1983, by Chris A. Schlegel, its Vice President and Donald F. Hathaway, its Asst. Secretary, officers of Federal Land Bank of St. Paul on behalf of the corporation.

Edward F. Hesler
Notary Public, Ramsey County, Minnesota

My commission expires Aug 6, 1988

OFFICIAL PLAT

PREPARED BY:
McGHEE & BETTS, INC.
CONSULTING ENGINEERS
LAND SURVEYORS
ROCHESTER, MINNESOTA

SAFARI ESTATES

Surveyor's Certificate

I hereby certify that I have surveyed and platted the property described on this plat as SAFARI ESTATES; that this is a correct representation of the survey; that all distances are correctly shown on the plat in feet and hundredths of a foot; that all monuments have been correctly placed in the ground as shown; that the outside boundary lines are correctly designated on the plat; and that there are no wet lands or public highways to be designated on said plat other than as shown thereon.

James E. Swanson
James E. Swanson, R.L.S.
Minnesota Registration Number 11622
State of Minnesota
County of Olmsted

The surveyor's certificate was subscribed and sworn to before me, a Notary Public, this 17th day of March, 1983.

Doug M. Rott
Notary Public, Olmsted County, Minnesota
My commission expires August 4, 1989.

County Engineer
Approved this 18 day of March, 1983, by Olmsted County Engineer.

J. K. Dolan
J. K. Dolan, County Engineer.

County Board
State of Minnesota
County of Olmsted
I do hereby certify that the accompanying plat was duly approved by the Olmsted County Board of Commissioners at a meeting held on the 22nd day of March, 1983. In testimony whereof I have signed my name and affixed the seal of said County this 22nd day of March, 1983.

Ross Brauning
Olmsted County Auditor
County Surveyor
I certify that this plat has been checked mathematically and that the plat conforms to the applicable platting laws, this 18th day of March, 1983.

Roger W. Brand
Olmsted County Surveyor

Planning Commission
We, the members of the Olmsted County Planning Advisory Commission, do hereby certify that we have examined the plat as shown, and find that it conforms to the provisions of the Sub-division Ordinance of Olmsted County.

Doris C. Burns
Commission Chairman

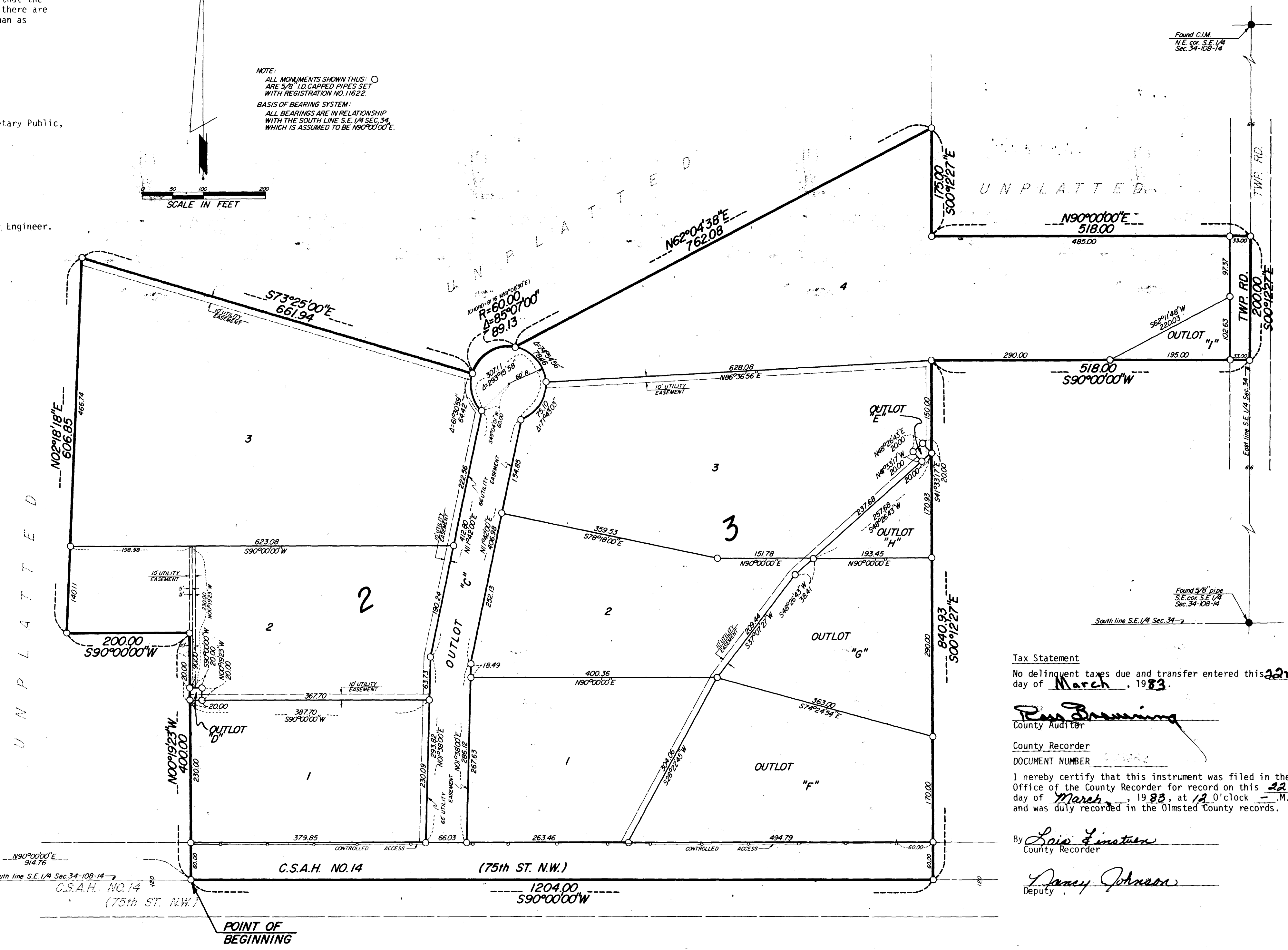
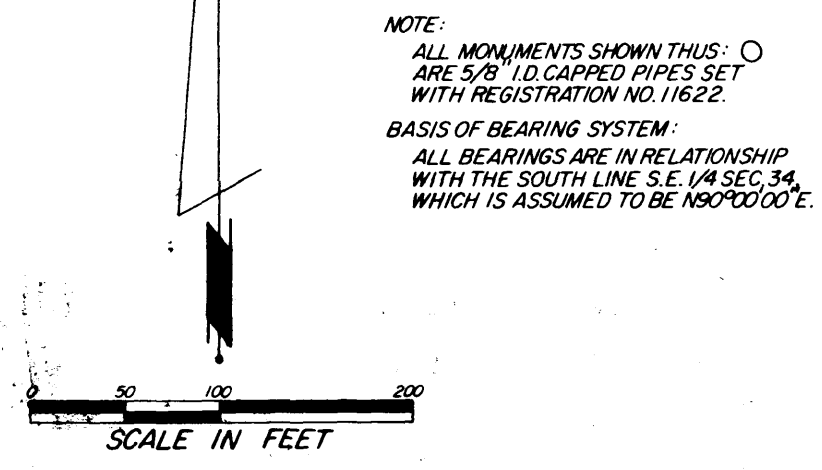
Township Board
The Township Board of Supervisors of Oronoco Township, Olmsted County, do hereby certify that we have approved the accompanying plat. In testimony whereof, we have signed our names this 8th day of March, 1983.

Joe L. Thompson
Board Chairman

Patricia Christenson
Town Clerk

County Board of Health
The Olmsted County Board of Health has approved this plat for water supply and sewage disposal system.

Richard A. Peter
Supervisor, Department of Environmental Health



Tax Statement
No delinquent taxes due and transfer entered this 22nd day of March, 1983.

Ross Brauning
County Auditor

County Recorder
DOCUMENT NUMBER

I hereby certify that this instrument was filed in the Office of the County Recorder for record on this 22nd day of March, 1983, at 12 o'clock P.M., and was duly recorded in the Olmsted County records.

By *Lois E. Linsten*
County Recorder

Dorothy Johnson
Deputy

Utility Easement defined:
An unobstructed easement for the construction and maintenance of all necessary underground or surface public utilities including rights to conduct drainage and trimming on said easement.

CONTROLLED ACCESS defined:
Ingress or egress to from, or across, the abutting roadway C.S.A.H. No. 112 and C.S.A.H. No. 14 is restricted by Olmsted County and said right of access is hereby dedicated to said road authority.

OFFICIAL PLAT

PREPARED BY:
McGHEE & BETTS, INC.
CONSULTING ENGINEERS
LAND SURVEYORS
ROCHESTER, MINNESOTA