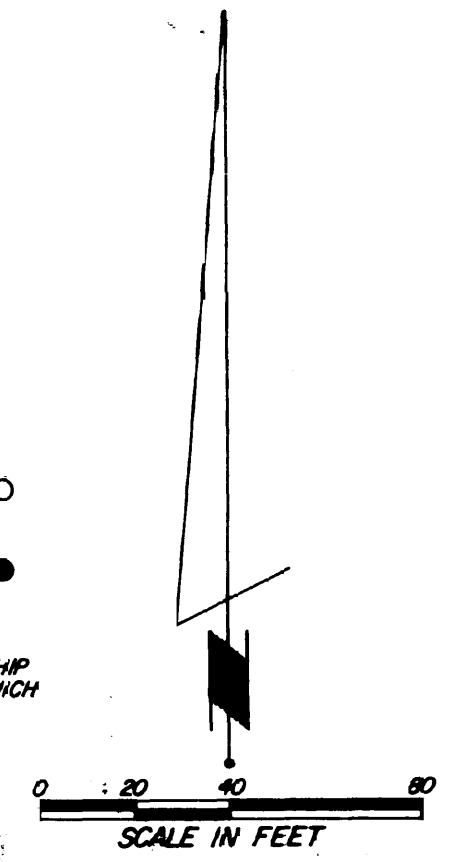


FRIENDLY ACRES REPLAT

NOTE:
 ALL MONUMENTS SHOWN THUS: ○
 ARE 5/8" I.D. CAPPED PIPES SET
 WITH REGISTRATION NO. 11622.
 ALL MONUMENTS SHOWN THUS: ●
 ARE FOUND 5/8" PIPES.
 BASIS OF BEARING SYSTEM:
 ALL BEARINGS ARE IN RELATIONSHIP
 WITH THE WEST LINE OF PLAT, WHICH
 IS ASSUMED TO BE DUE SOUTH.



Surveyor's Certificate

I hereby certify that I have surveyed and platted the property described on this plat as FRIENDLY ACRES REPLAT; that this is a correct representation of the survey; that all distances are correctly shown on the plat in feet and hundredths of a foot; that all monuments, have been correctly placed in the ground as shown; that the outside boundary lines are correctly designated on the plat; and there are no wet lands or public highways to be designated on said plat other than as shown thereon; and that said plat has been previously platted as Lots 1 and 2, Block 5, Schumann's Third Replat.

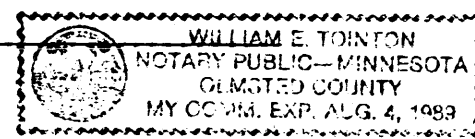
James E. Swanson
 James E. Swanson, R.L.S.,
 Minnesota Registration Number 11622

State of Minnesota
 County of Olmsted

The surveyor's certificate was subscribed and sworn to before me, a Notary Public, this 4th day of JANUARY, 1983.

William E. Tinton
 Notary Public, Olmsted County, Minnesota

My commission expires _____



State of Minnesota
 County of Olmsted
 City of Eyota

We, Cliff Coffin, Mayor, and Geraldine Asleson, City Clerk, in and for the City of Eyota, do hereby certify that on the 5th day of JANUARY, 1983, the accompanying plat was duly approved by the Common Council of the City of Eyota. In testimony thereof we have hereunto signed our names and affixed the seal of said City of Eyota this 5th day of JANUARY, 1983.

Cliff Coffin
 Cliff Coffin, Mayor

Geraldine Asleson
 Geraldine Asleson, Clerk

Tax Statement

No delinquent taxes due and transfer entered this 19th day of JANUARY, 1983.

Rose Branning
 County Auditor
 Helen Nelson, Deputy

County Surveyor

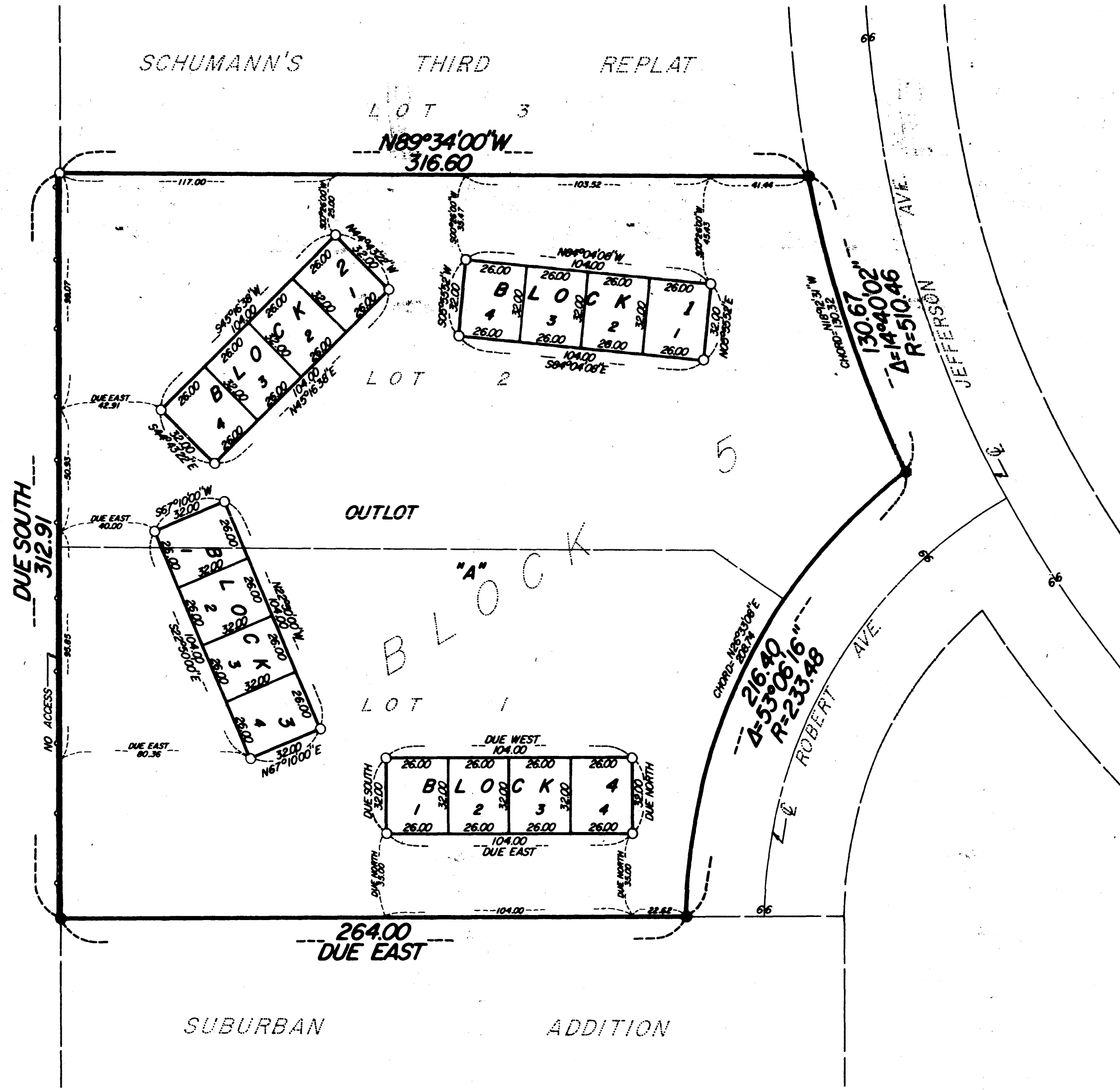
I certify that this plat has been checked mathematically and that the plat conforms to the applicable platting laws, this 4th day of JANUARY, 1983.

Roger W. Brand
 Olmsted County Surveyor

County Recorder 450976
 DOCUMENT NUMBER

I hereby certify that this instrument was filed in the Office of the County Recorder for record on this 30 day of JAN, 1983, at 10 o'clock P.M., and was duly recorded in the Olmsted County records.

By LOIS FINSTADEN
 County Recorder
Gerald M. Ferrier
 Deputy



Instrument of Dedication

KNOW ALL MEN BY THESE PRESENTS: That Alfred O. Schumann and Helen M. Schumann, husband and wife, owners and proprietors, and Eastwood State Bank, a Minnesota corporation, mortgagee of the following described property situated in the City of Eyota, State of Minnesota to wit:

Lots 1 and 2, Block 5, Schumann's Third Replat, Eyota, Minnesota have caused the same to be surveyed and platted as FRIENDLY ACRES REPLAT.

In witness whereof said Alfred O. Schumann and Helen M. Schumann have caused these presents to be signed this 12 day of JANUARY, 1983.

Alfred O. Schumann
 Alfred O. Schumann
Helen M. Schumann
 Helen M. Schumann

The foregoing instrument was acknowledged before me this 12th day of JAN, 1983, by Alfred O. Schumann and Helen M. Schumann, husband and wife.

Ruth Coffin
 Notary Public, Olmsted County, Minnesota
 My commission expires _____

In witness whereof said Eastwood State Bank, a Minnesota corporation, has caused these presents to be signed by its proper officers this 12th day of JAN, 1983.

Ruth Seif
James E. Mead

State of Minnesota
 County of Olmsted
 The foregoing instrument was acknowledged before me this 12th day of JAN, 1983, by Ruth Seif its officer and James E. Mead its officer of Eastwood State Bank on behalf of the corporation.

Ruth Coffin
 Notary Public, Olmsted County, Minnesota
 My commission expires _____

No Access Defined:

Egress and ingress by vehicular travel will not be permitted over and across the right-of-way line of C.S.A.H. No. 7, as shown on the accompanying plat.

OFFICIAL PLAT

PREPARED BY:
 MCGHIE & BETTS, INC.
 CONSULTING ENGINEERS
 LAND SURVEYORS
 ROCHESTER, MINNESOTA