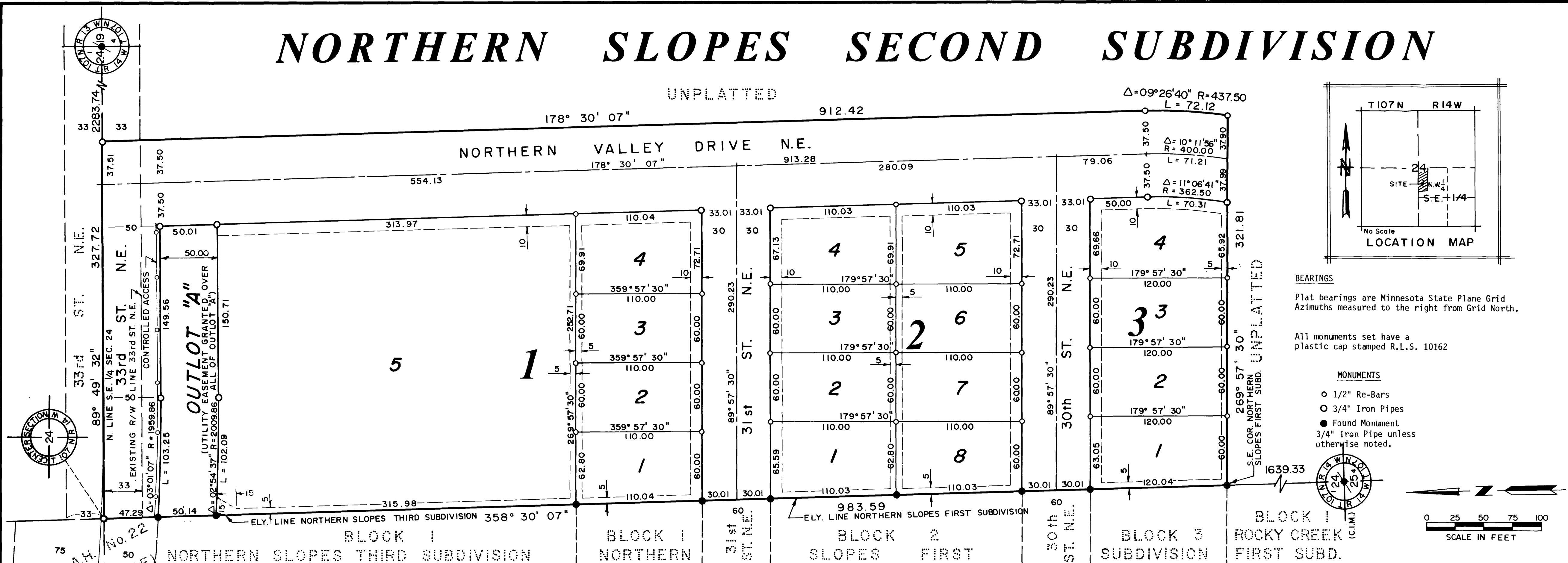


NORTHERN SLOPES SECOND SUBDIVISION

UNPLATTED



COUNTY SURVEYOR

I certify that this plat has been checked mathematically and that the plat conforms to the applicable platting laws.

Approved this 30th day of Dec., 1982

Robert W. Brand
Olmsted County Surveyor

COUNTY AUDITOR

TAX STATEMENT

No delinquent taxes due and transfer entered this 6th day of January, 1983.

Melva Nelson, Deputy
Olmsted County Auditor

COUNTY RECORDER

Document Number

I hereby certify that this instrument was filed in the office of the County Recorder for record on this 6 day of January, 1983, at 5 o'clock P.M., and was duly recorded in Olmsted County Records.

Carole M. Ferris, Deputy
Olmsted County Recorder

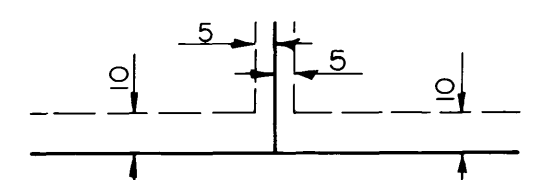
CITY APPROVAL

State of Minnesota
County of Olmsted
City of Rochester

I, Carole A. Grimm, City Clerk, in and for the City of Rochester, do hereby certify that on the 3 day of January, 1983, the accompanying plat was duly approved by the Common Council of the City of Rochester. In testimony whereof, I have hereunto signed my name and affixed the Seal of said City of Rochester this 4 day of January, 1983.

Carole A. Grimm
City Clerk

UTILITY EASEMENTS ARE SHOWN THUS:



Being 5 feet in width, unless otherwise indicated, and adjoining lot lines, and 10 feet in width and adjoining street lines, as shown on the plat.

UTILITY EASEMENT DEFINED

An unobstructed easement for the construction and maintenance of all necessary overhead, underground, or surface public utilities, including rights to conduct drainage and trimming on said easement.

CONTROLLED ACCESS DEFINED

Ingress or egress to, from or across the abutting roadway is restricted by the road authority pursuant to Minnesota State Statute 160.08.

SURVEYOR'S CERTIFICATE

I do hereby certify that I have surveyed and platted the property described on this plat as NORTHERN SLOPES SECOND SUBDIVISION that this plat is a correct representation of said survey, that all distances are correctly shown on said plat in feet and hundredths of a foot, that all monuments have been correctly placed in the ground as shown, that the outside boundary lines are correctly designated and that there are no wetlands or public highways to be designated on said plat other than as shown.

Donald R. Borcharding
DONALD R. BORCHARDING
Minnesota R.L.S. 10162

STATE OF MINNESOTA
COUNTY OF OLMSTED

The foregoing Surveyor's Certificate was acknowledged before me this 29th day of Dec., 1982 by Donald R. Borcharding, Minnesota R.L.S. No. 10162.

Donald R. Borcharding
Notary Public, Olmsted County, MN
My Commission Expires 12-21-85

INSTRUMENT OF DEDICATION

KNOW ALL MEN BY THESE PRESENTS: That Payne Company, a Minnesota Corporation, owners and proprietors of the following described property situated in the County of Olmsted, State of Minnesota, to wit:

That part of the Northwest Quarter of the Southeast Quarter of Section 24, Township 107 North, Range 14 West, Olmsted County, Minnesota, described as follows:

Beginning at the center of said section; thence easterly on a Minnesota State Plane Grid Azimuth from north of 89 degrees 49 minutes 32 seconds along the north line of said Southeast Quarter 327.72 feet; thence southerly 178 degrees 30 minutes 07 seconds azimuth 912.42 feet; thence southerly 72.12 feet along a tangential curve concave to the west having a radius of 437.50 feet and a central angle of 09 degrees 26 minutes 40 seconds; thence westerly 269 degrees 57 minutes 30 seconds azimuth 321.81 feet to the southeast corner of Northern Slopes First Subdivision; thence northerly 358 degrees 30 minutes 07 seconds azimuth along the easterly line of Northern Slopes First and Third Subdivisions 983.59 feet to a point of beginning.

Said tract contains 7.40 acres more or less.

Have caused the same to be surveyed and platted as NORTHERN SLOPES SECOND SUBDIVISION and do hereby donate and dedicate to the public for public use forever the thoroughfares and grant the easements as shown on this plat.

In witness whereof said Payne Company has caused these presents to be signed by its proper officers and its corporate seal to be hereunto affixed this 30th day of DECEMBER, 1982.

H.E. Payne
H.E. Payne - President
V.M. Payne
V.M. Payne - Secretary-Treasurer

STATE OF MINNESOTA
COUNTY OF OLMSTED

The foregoing instrument was acknowledged before me this 30th day of December, 1982 by H.E. Payne and V.M. Payne, President and Secretary-Treasurer, respectively, of Payne Company, a Minnesota Corporation, on behalf of the corporation.

John J. Jule
Notary Public, Olmsted County, MN
My Commission Expires Jan 22, 1989

PREPARED BY
YAGGY ASSOCIATES, INC.
CONSULTING ENGINEERS ■ PLANNERS ■ SURVEYORS
ROCHESTER, MINNESOTA ■ MASON CITY, IOWA