

# ROCHESTER ASSEMBLY OF GOD SUBDIVISION

NOTE:  
 ALL MONUMENTS SHOWN THIS: ○  
 ARE 5/8" I.D. CAPPED PIPES SET  
 WITH REGISTRATION NO. 11622.  
 ALL MONUMENTS SHOWN THIS: ●  
 ARE FOUND 3/8" PIPES.  
 UNLESS OTHERWISE NOTED.  
 BASIS OF BEARING SYSTEM:  
 ALL BEARINGS ARE IN RELATIONSHIP  
 WITH THE WEST LINE S.E. 1/4 SEC. 15,  
 WHICH IS ASSUMED TO BE N00°02'00"E.



**Surveyor's Certificate**

I hereby certify that I have surveyed and platted the property described on this plat as ROCHESTER ASSEMBLY OF GOD SUBDIVISION; that this is a correct representation of the survey; that all distances are correctly shown on the plat in feet and hundredths of a foot; that all monuments have been correctly placed in the ground as shown; that the outside boundary lines are correctly designated on the plat; and that there are no wet lands or public highways to be designated on said plat other than as shown thereon.

James E. Swanson  
 James E. Swanson, R.L.S.  
 Minnesota Registration Number 11622

State of Minnesota  
 County of Olmsted  
 The surveyor's certificate was subscribed and sworn to before me, a Notary Public, this 11th day of October, 1982.

William E. Trenton  
 Notary Public, Olmsted County, Minnesota  
 My commission expires \_\_\_\_\_

**City Approval**  
 State of Minnesota  
 County of Olmsted  
 City of Rochester

I, Carole A. Grimm, City Clerk in and for the City of Rochester, do hereby certify that on the 18th day of October, 1982, the accompanying plat was duly approved by the Common Council of the City of Rochester. In testimony thereof I have hereunto signed my name and affixed the seal of said City of Rochester this 19th day of November, 1982.

Carole A. Grimm  
 City Clerk

**Tax Statement**  
 No delinquent taxes due and transfer entered this 19th day of November 1982.

Gene Branning  
 County Auditor Gene Nelson, Deputy

**County Surveyor**  
 I certify that this plat has been checked mathematically and that the plat conforms to the applicable platting laws, this 12th day of November, 1982.

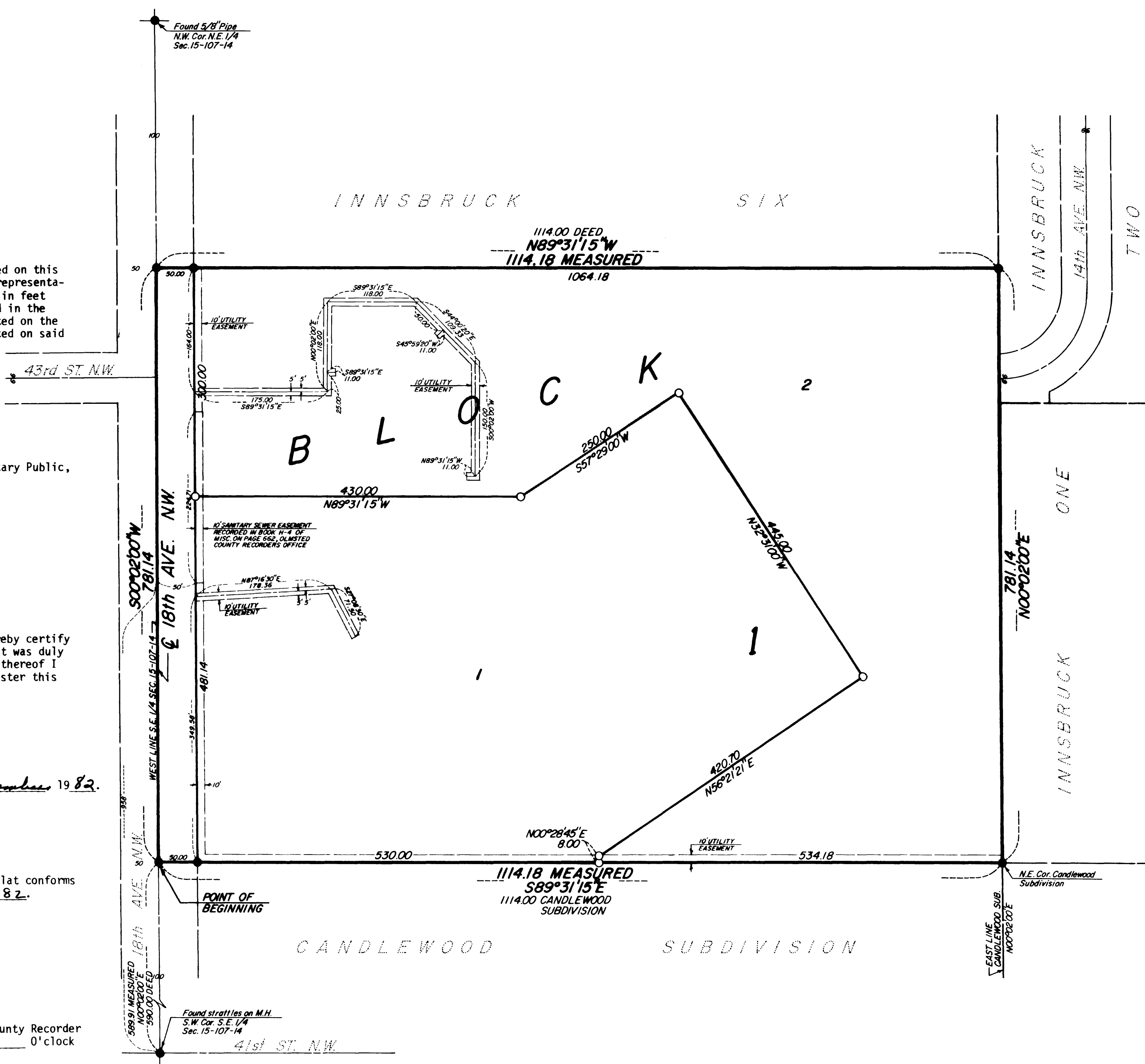
Roger W. Brand  
 Olmsted County Surveyor

**County Recorder**  
 DOCUMENT NUMBER \_\_\_\_\_

I hereby certify that this instrument was filed in the Office of the County Recorder for record on this 19th day of November, 1982, at 3 1/2 o'clock P.M., and was duly recorded in the Olmsted County records.

By Sara Finstuen  
 County Recorder

Nancy Johnson  
 Deputy



**Instrument of Dedication**

KNOW ALL MEN BY THESE PRESENTS: That Rochester Assembly of God Church, a Minnesota corporation, owner and proprietor, and Assemblies of God Minister's Benefit Association, mortgagee, of the following described property situated in the City of Rochester, State of Minnesota to wit:

Commencing at the Southwest corner of the Southwest Quarter, South-east One Quarter, Section 15, Township 107 North, Range 14 West; thence North along the west line of said Southwest Quarter, South-east One Quarter, a distance of 590 feet for a place of beginning; thence East along the north line of Candlewood Subdivision a distance of 1114.00 feet to the northeast corner of said subdivision; thence North on an extension of the east line of Candlewood Subdivision, a distance of 781.14 feet; thence West parallel to the north line of Candlewood Subdivision a distance of 1114.00 feet, more or less, to the west line of said Northwest Quarter, South-east Quarter, Section 15, Township 107, Range 14; thence South along said west line a distance of 781.14 feet, more or less, to the place of beginning, said parcel to contain 20 acres including road right-of-way.

have caused the same to be surveyed and platted as ROCHESTER ASSEMBLY OF GOD SUBDIVISION and do hereby donate and dedicate to the public for the public use forever the avenue and also dedicate the easements as shown on this plat for drainage and utility purposes only.

In witness whereof said Rochester Assembly of God Church, a Minnesota religious corporation, has caused these presents to be signed by its proper officers this 18th day of October, 1982.

Rev. Craig Carter, President  
Don Johnson, Secretary

State of Minnesota  
 County of Olmsted  
 The foregoing instrument was acknowledged before me this 12th day of October, 1982, by Rev. Craig Carter, its President, and Don Johnson, its Secretary, officers of Rochester Assembly of God Church, on behalf of the corporation.

J. O. Swanson  
 Notary Public, Olmsted County, Minnesota  
 My commission expires 7-24-1985

In witness whereof said Assemblies of God Minister's Benefit Association has caused these presents to be signed by its proper officers this 13th day of October, 1982.

G. Raymond Carlson, Chairman  
Raymond H. Hudson, Treasurer  
 State of Missouri  
 County of Greene

The foregoing instrument was acknowledged before me this 13th day of October, 1982, by G. Raymond Carlson its President and Raymond H. Hudson its Treasurer officers of Assemblies of God Minister's Benefit Association on behalf of the corporation.

James Woodman  
 Notary Public, Greene County, MO  
 My commission expires 9-2-84

**Utility Easement Defined**  
 An unobstructed easement for the construction and maintenance of all necessary overhead, underground, or surface public utilities, including rights to conduct drainage and trimming on said easement.

**OFFICIAL PLAT**  
 PREPARED BY:  
 MCGHIE & BETTS, INC.  
 CONSULTING ENGINEERS  
 LAND SURVEYORS  
 ROCHESTER, MINNESOTA