

OLD SCHOOL SUBDIVISION

Surveyor's Certificate

I hereby certify that I have surveyed and platted the property described on this plat as OLD SCHOOL SUBDIVISION; that this plat is a correct representation of the survey; that all distances are correctly shown on the plat in feet and hundredths of a foot; that all monuments have been correctly placed in the ground as shown; that the outside boundary lines are correctly designated on the plat; and that there are no wet lands as defined in MS 505.02, Subd. 1, or public highways to be designated other than as shown.

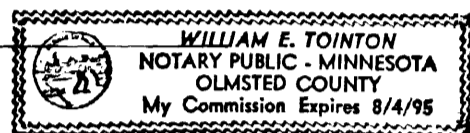
James E. Swanson
James E. Swanson, R.L.S.
Minnesota License Number 11622

State of Minnesota
County of Olmsted

The surveyor's certificate was subscribed and sworn to before me, a Notary Public, this 23rd day of May, 1994.

William E. Tointon
Notary Public, Olmsted County, Minnesota

My commission expires:



County Surveyor

I certify that this plat has been checked mathematically and that the plat conforms to the applicable laws, this 23 day of May, 1994.

Edward P. Kniel
Olmsted County Surveyor

Tax Statements

Taxes payable in the year 1994 on the land herein described have been paid, there are no delinquent taxes and transfer has been entered this day of August, 1994.

David Ryan
Olmsted County Auditor/Treasurer

By *James E. Swanson* Deputy

City Approval

State of Minnesota
County of Olmsted
City of Eyota

We, Wesley Bussell, Mayor, and Geraldine Asleson, City Clerk, in and for the City of Eyota, do hereby certify that on the 18th day of May, 1994, the accompanying plat was duly approved by the Common Council of the City of Eyota. In testimony whereof we have hereunto signed our names and affixed the seal of said City of Eyota this 20th day of June, 1994.

Wesley Bussell
Wesley Bussell, Mayor
Geraldine Asleson
Geraldine Asleson, City Clerk

County Recorder

DOCUMENT NUMBER 690592

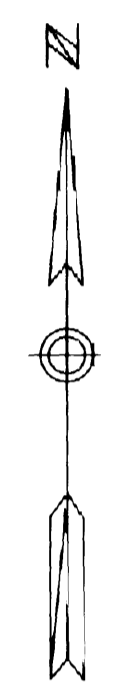
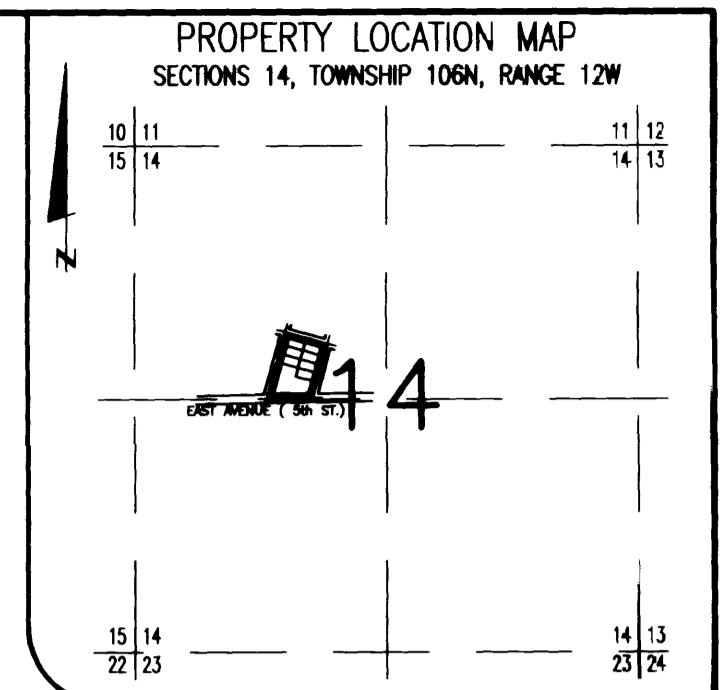
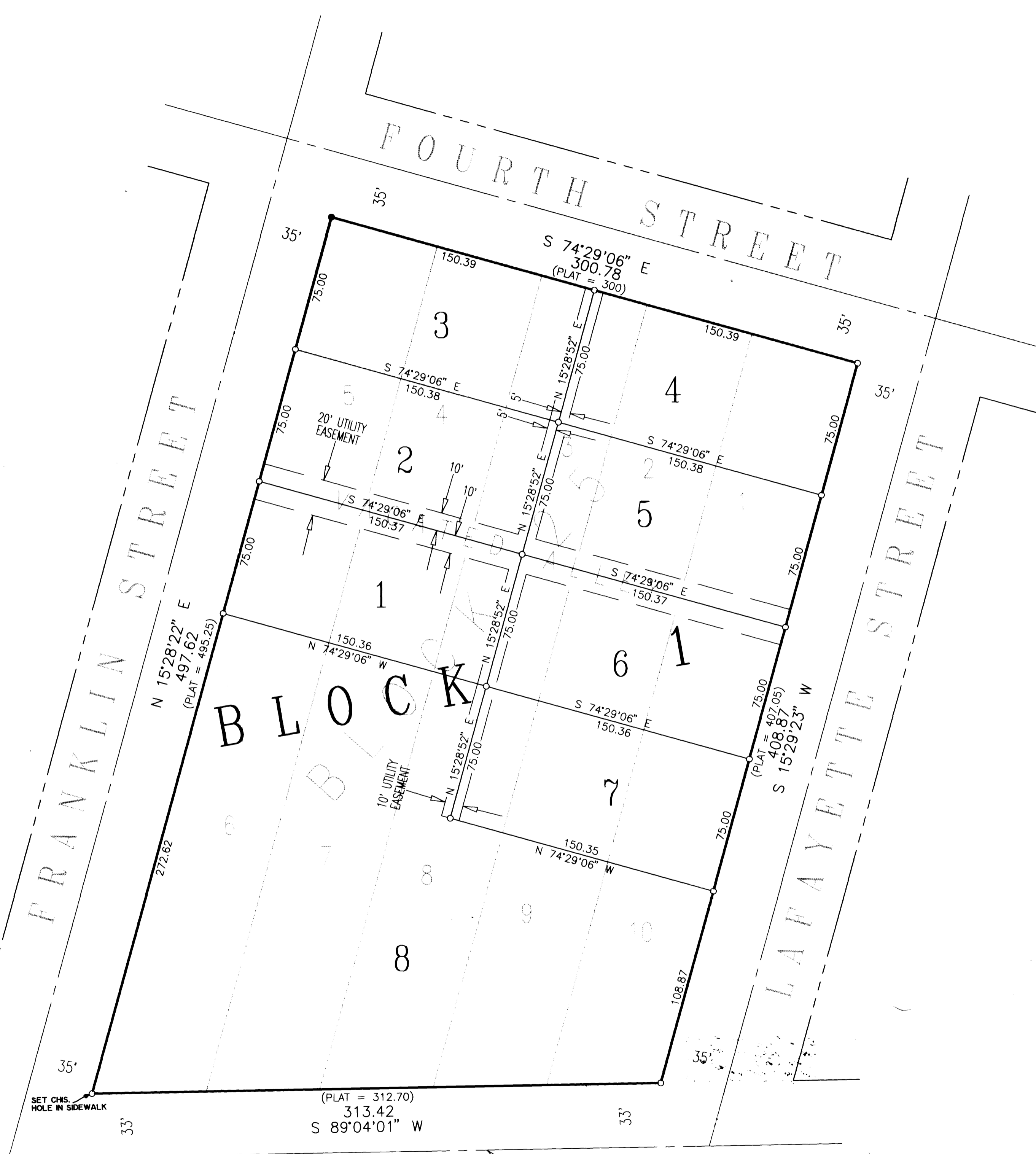
I hereby certify that this instrument was filed in the office of the County Recorder for record on this 17th day of August, 1994, at 11:00 o'clock A.M., and was duly recorded in the Olmsted County records.

By *Mary F. Callie*
County Recorder
Julia M. Koppell
Deputy

DOCUMENT # 690592
OLMSTED COUNTY RECORDER

11A

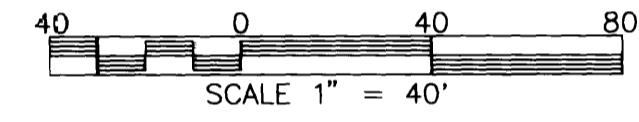
INITIALS *JK*



NOTE:
ALL MONUMENTS SHOWN THUS: ○
ARE 5/8" I.D. CAPPED PIPES SET
WITH REGISTRATION NO. 11622.
ALL MONUMENTS SHOWN THUS: ●
ARE FOUND 5/8" PIPES.

UTILITY EASEMENT defined:
An unobstructed easement for the construction and maintenance of all necessary underground or surface public utilities including rights to conduct drainage and trimming on said easement.

BASIS OF BEARING SYSTEMS:
ALL BEARINGS ARE IN RELATIONSHIP
WITH THE SOUTH LINE N.W. 1/4 SEC 14,
WHICH IS ASSUMED TO BE S89°04'01"W.



Instrument of Dedication

KNOW ALL MEN BY THESE PRESENTS: That L&S Development, Inc., a Minnesota Corporation, owner and proprietor of the following described property situated in the County of Olmsted, State of Minnesota, to wit:

Lots 1 through 10 inclusive and all of the vacated alley adjoining said Lots, all in Block 25, Original Plat of Eyota, Minnesota.

has caused the same to be surveyed and platted as OLD SCHOOL SUBDIVISION and do hereby donate and dedicate, to the public for the public use forever, the easements as shown on this plat for drainage and utility purposes only.

In witness whereof said L&S Development, Inc., a Minnesota Corporation, has caused these presents to be signed by its proper officer this 1st day of June, 1994.

Ronald Simonson
Ronald Simonson, President

State of Minnesota
County of Olmsted

The foregoing instrument was acknowledged before me this 1st day of June, 1994, by Ronald Simonson, President of L&S Development, Inc., a Minnesota Corporation, on behalf of the Corporation.

James E. Swanson
Notary Public, Olmsted County, Minnesota

My commission expires



PREPARED BY:
McGHEE & BETTS, INC.
CONSULTING ENGINEERS
PLANNERS, LAND SURVEYORS
ROCHESTER, MINNESOTA