

# DREW'S REPLAT

**Surveyor's Certificate**

I hereby certify that I have surveyed and platted the property described on this plat as DREW'S REPLAT; that this is a correct representation of the survey; that all distances are correctly shown on the plat in feet and hundredths of a foot; that all monuments have been correctly placed in the ground as shown; that the outside boundary lines are correctly designated on the plat; and that there are no wet lands or public highways to be designated on said plat other than as shown thereon.

*James E. Swanson*  
James E. Swanson, R.L.S.  
Minnesota Registration Number 11622

State of Minnesota  
County of Olmsted  
The surveyor's certificate was subscribed and sworn to before me, a Notary Public, this 10<sup>th</sup> day of May, 1982.

*Howard E. Hunt*  
Notary Public, Olmsted County, Minnesota  
My commission expires Dec. 9, 1985

**Tax Statement**  
No delinquent taxes due and transfer entered this 20<sup>th</sup> day of May, 1982.

*Paula Nelson*  
County Auditor

County Auditor

County Surveyor  
I certify that this plat has been checked mathematically and that the plat conforms to the applicable platting laws, this 20<sup>th</sup> day of May, 1982.

*Roger W. Brand*  
Olmsted County Surveyor

County Recorder  
DOCUMENT NUMBER 443463

I hereby certify that this instrument was filed in the Office of the County Recorder for record on this 21 day of May, 1982 at 8 o'clock A.M., and was duly recorded in the Olmsted County records.

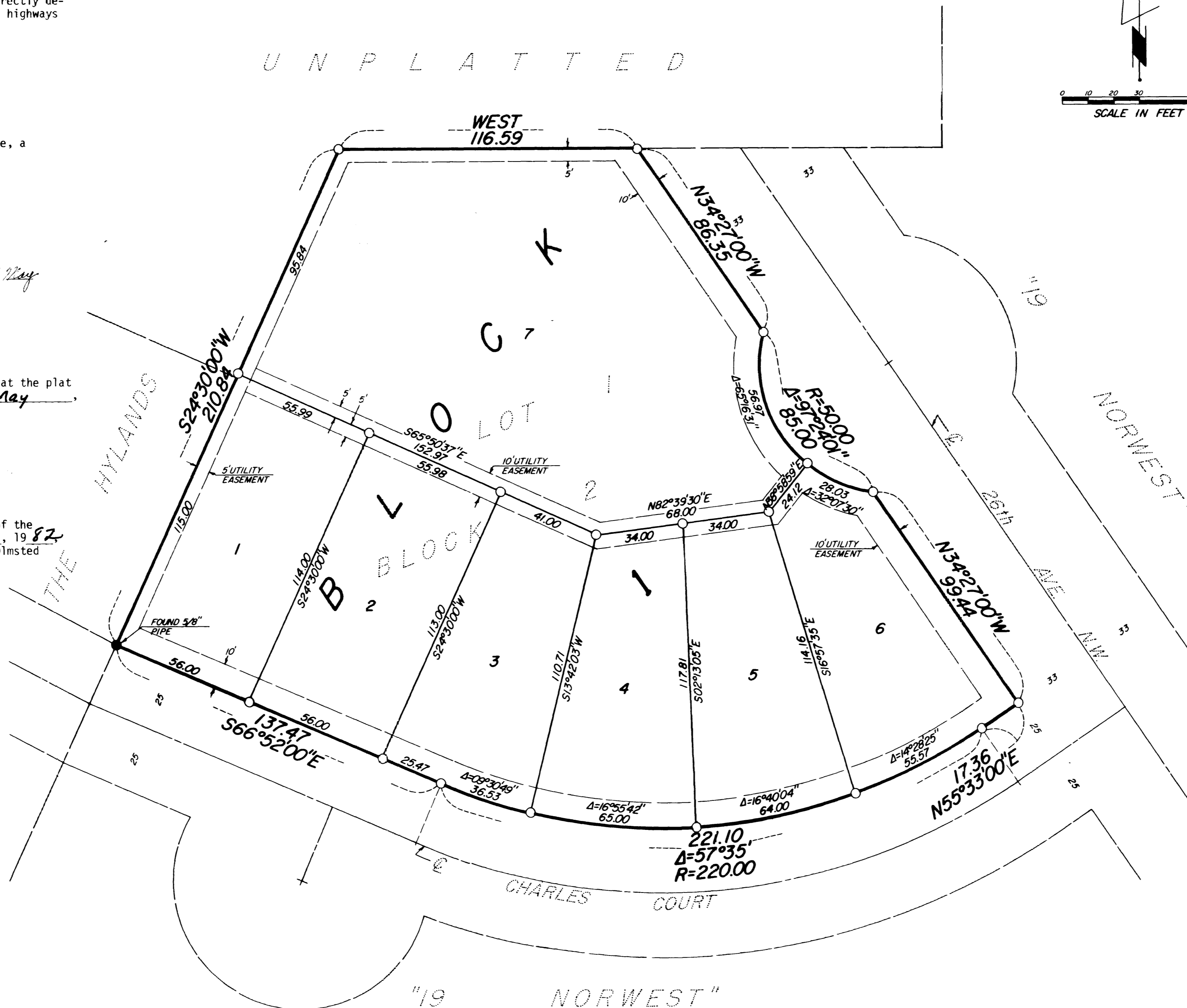
By Carole M. Ferrier  
Deputy County Recorder

City Approval  
State of Minnesota  
County of Olmsted  
City of Rochester

I, Carole A. Grimm, City Clerk in and for the City of Rochester, do hereby certify that on the 3 day of MAY, 1982, the accompanying plat was duly approved by the Common Council of the City of Rochester. In testimony thereof I have hereunto signed my name and affixed the seal of said City of Rochester this 20 day of MAY, 1982.

*Carole A. Grimm*  
City Clerk

U N P L A T T E D



**NOTE:**  
ALL MONUMENTS SHOWN THIS: ○  
ARE 5/8" I.D. CAPPED PIPES SET  
WITH REGISTRATION NO. 11622.  
**BASIS OF BEARING SYSTEM:**  
ALL BEARINGS ARE IN RELATIONSHIP  
WITH THE WEST LINE LOT 1, BLOCK 2,  
"19 NORWEST" WHICH IS ASSUMED  
TO BE S24°30'00" W.

**Instrument of Dedication**

KNOW ALL MEN BY THESE PRESENTS: That K.D.G.J. Enterprises, a limited partnership under the laws of the State of Minnesota, vendee of an unrecorded contract for deed, and Richard F. Schmidt, nominee for Novus Property Company, vendor of an unrecorded contract for deed, owners and proprietors, of the following described property situated in the City of Rochester, State of Minnesota to wit:

Lot 1, Block 2, "19 Norwest"  
have caused the same to be surveyed and platted as DREW'S REPLAT and do hereby dedicate to the public for the public use forever the easements as shown on this plat for drainage and utility purposes only.

In witness whereof said K.D.G.J. Enterprises, a limited partnership, has caused these presents to be signed this 19 day of MAY, 1982.

*Clark R. Kilpatrick*  
Clark R. Kilpatrick, Partner  
*Merle O. Groteboer*  
Merle O. Groteboer, Partner

State of Minnesota  
County of Olmsted  
The foregoing instrument was acknowledged before me this 19<sup>th</sup> day of May, 1982, by Clark R. Kilpatrick, partner and Merle O. Groteboer, partner, on behalf of K.D.G.J. Enterprises, a limited partnership under the laws of the State of Minnesota.

*Debbie L. Elias*  
Notary Public, Olmsted County, Minnesota  
My commission expires Dec. 18, 1985

In witness whereof said Richard F. Schmidt, nominee for Novus Property Company has caused these presents to be signed this 12<sup>th</sup> day of MAY, 1982.

*Richard F. Schmidt*  
Richard F. Schmidt

State of Illinois  
County of Cook  
The foregoing instrument was acknowledged before me this 12<sup>th</sup> day of May, 1982, by Richard F. Schmidt, nominee for Novus Property Company.

*Patricia A. Mead*  
Notary Public, Cook County, Illinois  
My commission expires June 9, 1984

**Utility Easement Defined**  
An unobstructed easement for the construction and maintenance of all necessary overhead, underground, or surface public utilities including rights to conduct drainage and trimming on said easement.

**OFFICIAL PLAT**

**PREPARED BY:**  
McGHIE & BETTS, INC.  
CONSULTING ENGINEERS  
LAND SURVEYORS  
ROCHESTER, MINNESOTA