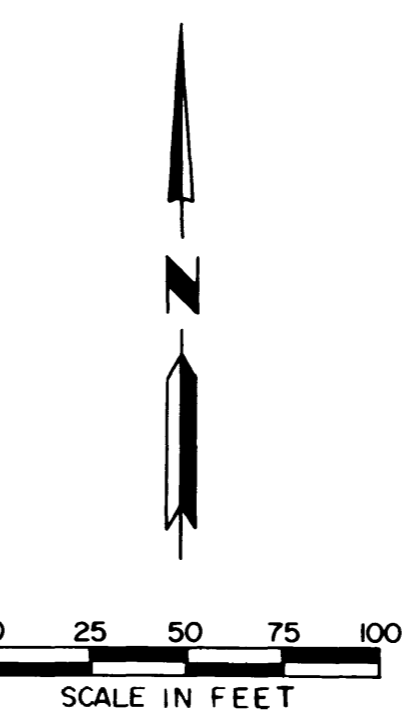
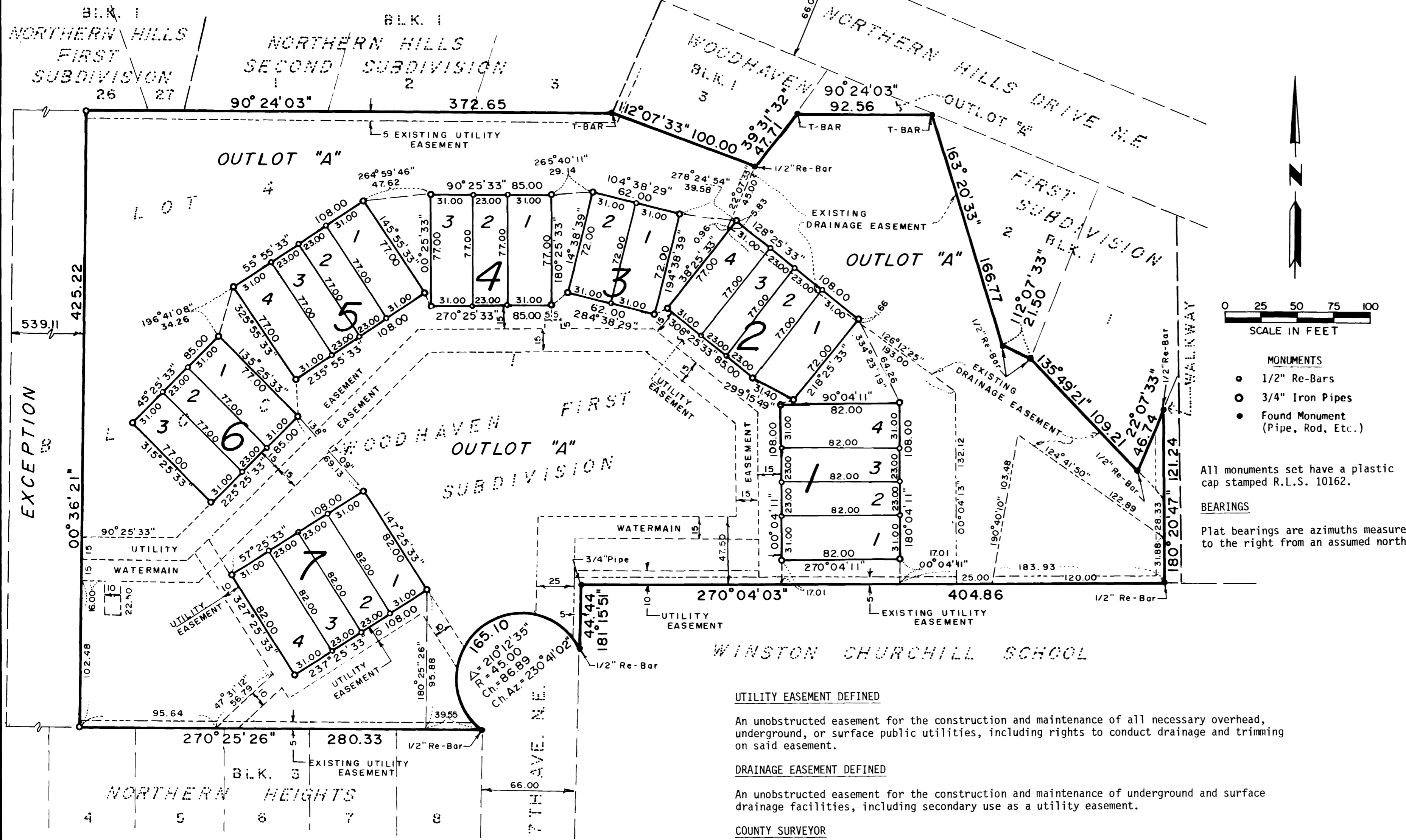


# WOODHAVEN SECOND SUBDIVISION



- MONUMENTS**
- 1/2" Re-Bars
  - 3/4" Iron Pipes
  - Found Monument (Pipe, Rod, Etc.)

All monuments set have a plastic cap stamped R.L.S. 10162.

**BEARINGS**  
Plat bearings are azimuths measured to the right from an assumed north.

**INSTRUMENT OF DEDICATION**

KNOW ALL MEN BY THESE PRESENTS: That Younge Companies, a partnership consisting of Younge Development Co. and Younge Bros. Construction Co., both of which are Minnesota Corporations, owners and proprietors of the following described property situated in the County of Olmsted, State of Minnesota, to wit:

All of Lot 4, Block 1 of Woodhaven First Subdivision according to the plat thereof on file in the County Recorders Office, Olmsted County, Minnesota, except the west 539.11 feet thereof.

Said tract contains 5.59 acres more or less.

Haved caused the same to be surveyed and platted as WOODHAVEN SECOND SUBDIVISION and do hereby grant the easements as shown on this plat.

In witness whereof said Younge Bros. Construction Co. has caused these presents to be signed by its proper officers this \_\_\_\_\_ day of \_\_\_\_\_, 1981.

*Jerry P. Younge*  
Jerry P. Younge, President  
*Michael J. Younge*  
Michael J. Younge, Vice President

STATE OF MINNESOTA  
COUNTY OF OLMSTED

The foregoing instrument was acknowledged before me this 17 day of May, 1981, by Jerry P. Younge and Michael J. Younge, President and Vice President respectively of Younge Bros. Construction Co., a Minnesota Corporation, on behalf of the Corporation.

*Walter K. Pohlen*  
Notary Public, Olmsted County, MN  
My Commission Expires 6/28/85

In witness where of said Younge Development Co. has caused these presents to be signed by its proper officer this \_\_\_\_\_ day of \_\_\_\_\_, 1981.

*Rodney A. Younge*  
Rodney A. Younge, President

STATE OF MINNESOTA  
COUNTY OF OLMSTED

The foregoing instrument was acknowledged before me this \_\_\_\_\_ day of \_\_\_\_\_, 1981 by Rodney A. Younge, President of Younge Development Co., a Minnesota Corporation, on behalf of the Corporation.

*Bl. J. P.*  
Notary Public, Olmsted County, MN  
My Commission Expires 8/10/85

**SURVEYOR'S CERTIFICATE**

I do hereby certify that I have surveyed and platted the property described on this plat as WOODHAVEN SECOND SUBDIVISION, that this plat is a correct representation of said survey, that all distances are correctly shown on said plat in feet and hundredths of a foot, that all monuments have been correctly placed in the ground as shown, that the outside boundary lines are correctly designated and that there are no wetlands or public highways to be designated on said plat other than as shown.

*Donald R. Borcharding*  
DONALD R. BORCHARDING  
Minnesota R.L.S. 10162

STATE OF MINNESOTA  
COUNTY OF OLMSTED

The foregoing Surveyor's Certificate was acknowledged before me this \_\_\_\_\_ day of \_\_\_\_\_, 1981 by Donald R. Borcharding, Minnesota R.L.S. No. 10162.

*Donald R. Borcharding*  
Notary Public, Olmsted County, MN  
My Commission Expires 12-21-85

**CITY APPROVAL**

State of Minnesota  
County of Olmsted  
City of Rochester

I, Carole A. Grimm, City Clerk, in and for the City of Rochester, do hereby certify that on the 18 day of MAY, 1981, the accompanying plat was duly approved by the Common Council of the City of Rochester. In testimony whereof, I have hereunto signed my name and affixed the Seal of said City of Rochester this 19 day of MAY, 1981.

*Carole A. Grimm*  
City Clerk

**UTILITY EASEMENT DEFINED**

An unobstructed easement for the construction and maintenance of all necessary overhead, underground, or surface public utilities, including rights to conduct drainage and trimming on said easement.

**DRAINAGE EASEMENT DEFINED**

An unobstructed easement for the construction and maintenance of underground and surface drainage facilities, including secondary use as a utility easement.

**COUNTY SURVEYOR**

I certify that this plat has been checked mathematically and that the plat conforms to the applicable platting laws.

Approved this 5th day of May, 1981

*Wm. H. Linn*  
Olmsted County Surveyor

**COUNTY AUDITOR**

No delinquent taxes due and transfer entered this 13th day of November, 1981.

*Rose Browning*  
Rose Browning, Deputy  
Olmsted County Auditor

**COUNTY REGISTRAR OF TITLES**

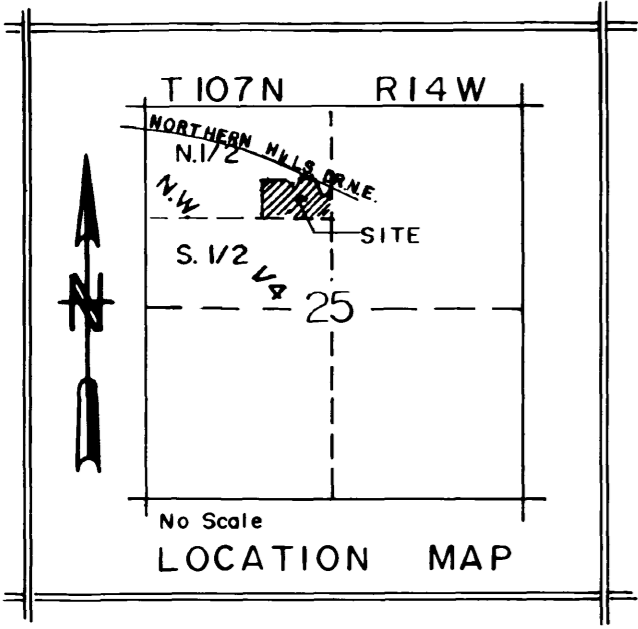
Document Number 34677

I hereby certify that this instrument was filed in the office of the County Registrar of Titles for record on this 13th day of November, 1981, at 11 o'clock A.M. and was duly recorded in Olmsted County Records.

*Carolyn Beckner*  
Carolyn Beckner, Deputy  
Olmsted County Registrar of Titles

**WATERMAIN EASEMENT DEFINED**

An unobstructed easement for the construction and maintenance of a public watermain and appurtenances.



PREPARED BY  
**YAGGY ASSOCIATES, INC.**  
CONSULTING ENGINEERS ■ PLANNERS ■ SURVEYORS  
ROCHESTER, MINNESOTA ■ MASON CITY, IOWA