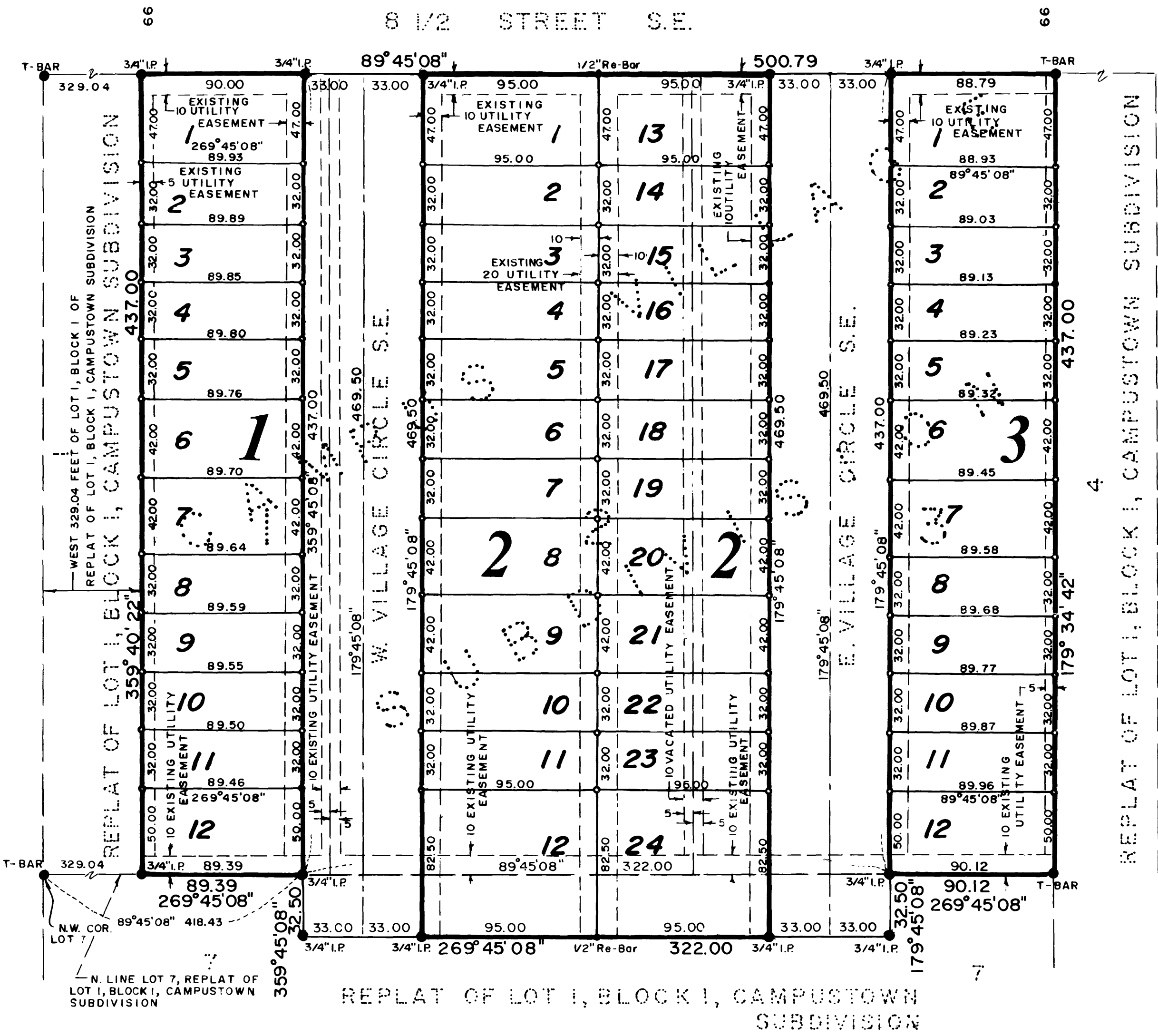


CAMPUS VILLAGE SUBDIVISION II



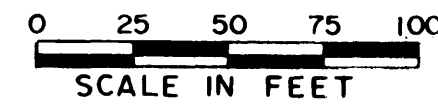
All monuments set have a plastic cap stamped R.L.S. 10162.

MONUMENTS

- 1/2" Re-Bars
- 3/4" Iron Pipes
- Found Monument (Pipe, Rod, Etc.)

BEARINGS

Plat bearings are azimuths measured to the right from an assumed north.



INSTRUMENT OF DEDICATION

KNOW ALL MEN BY THESE PRESENTS: That Robert N. Springer, President of Campus Town, Inc., a Minnesota corporation and the First National Bank of Minneapolis, a Minnesota corporation and Elizabeth G. Lowry, owners and proprietors of the following described property situated in the County of Olmsted, State of Minnesota, to wit:

All of Blocks 1, 2 and 3 in Campus Village Subdivision according to the plat thereof on file in the County Recorders Office, Olmsted County, Minnesota.

Said tract contains 3.88 acres more or less.

Have caused the same to be surveyed and platted as CAMPUS VILLAGE SUBDIVISION II.

COUNTY AUDITOR

No delinquent taxes due and transfer entered this 16th day of October, 1981.

Carol Ann Ferrier
Olmsted County Auditor
Melissa Nelson, Deputy

COUNTY RECORDER

Document Number 42151

I hereby certify that this instrument was filed in the office of the County Recorder for record on this 16 day of October, 1981, at 10 o'clock A.M. and was duly recorded in Olmsted County Records.

Carole A. Grimm
Olmsted County Recorder
Deputy

CITY APPROVAL

State of Minnesota
County of Olmsted
City of Rochester

I, Carole A. Grimm, City Clerk, in and for the City of Rochester, do hereby certify that on the 8 day of October, 1981, the accompanying plat was duly approved by the Common Council of the City of Rochester. In testimony whereof, I have hereunto signed my name and affixed the Seal of said City of Rochester this 14 day of October, 1981.

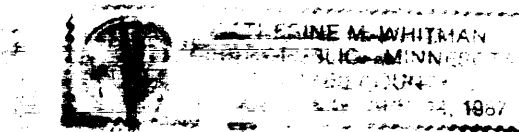
Carole A. Grimm
City Clerk

In witness whereof said Campus Town Inc. has caused these presents to be signed by its proper officer.

Robert N. Springer
Robert N. Springer, President

STATE OF MINNESOTA
COUNTY OF OLMSTED

The foregoing instrument was acknowledged before me this 2nd day of October, 1981, by Robert N. Springer, President of Campus Town Inc., on behalf of the corporation.



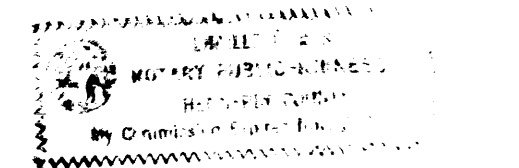
Catherine M. Whitman
Notary Public, Olmsted County, MN
My Commission Expires 4-14-87

In witness whereof said First National Bank of Minneapolis has caused these presents to be signed by its proper officers and its corporate seal to be hereunto affixed this 6TH day of OCTOBER, 1981.

Thomas J. Hask *Harold M. Sibley*
ASST. VICE PRES. TRUST OFFICER

STATE OF MINNESOTA
COUNTY OF HENNEPIN

The foregoing instrument was acknowledged before me this 6TH day of OCTOBER, 1981 by *Thomas J. Hask* and *Harold M. Sibley* respectively of the First National Bank of Minneapolis, a Minnesota corporation, on behalf of the corporation.



Suzanne L. Rust
Notary Public, Hennepin County, MN
My Commission Expires 12-31-87

In witness whereof said Elizabeth G. Lowry has hereunto set her hand this 5th day of October, 1981.

Elizabeth G. Lowry
Elizabeth G. Lowry

STATE OF MINNESOTA
COUNTY OF OLMSTED

The foregoing instrument was acknowledged before me this 5th day of October, 1981 by Elizabeth G. Lowry.

Celia E. Skutumpah
Notary Public, Olmsted County, MN
My Commission Expires 11-16-1988

SURVEYOR'S CERTIFICATE

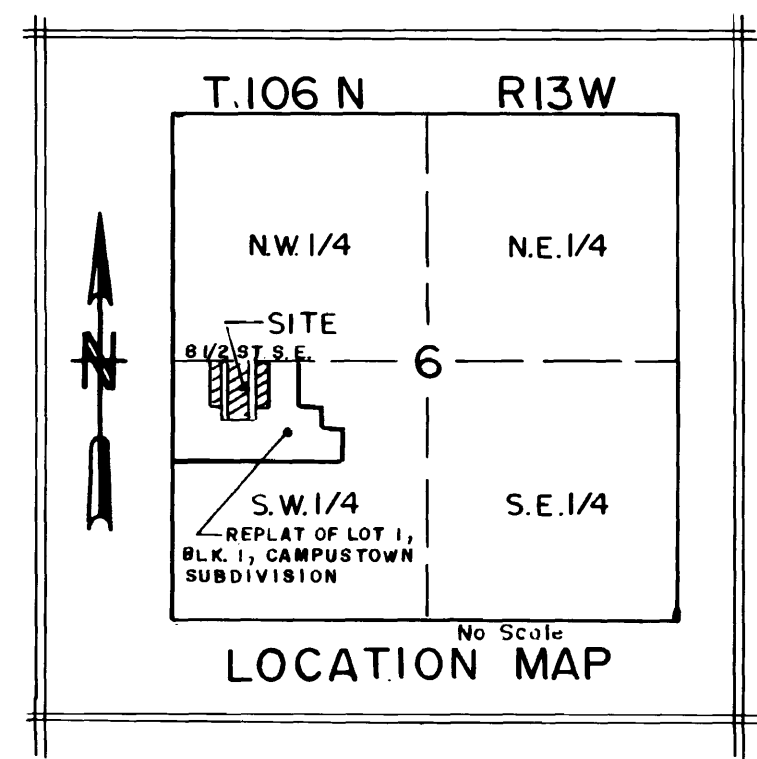
I do hereby certify that I have surveyed and platted the property described on this plat as CAMPUS VILLAGE SUBDIVISION II, that this plat is a correct representation of said survey, that all distances are correctly shown on said plat in feet and hundredths of a foot, that all monuments have been correctly placed in the ground as shown, that the outside boundary lines are correctly designated and that there are no wetlands or public highways to be designated on said plat other than as shown.

Donald R. Borcharding
DONALD R. BORCHARDING
Minnesota R.L.S. 10162

STATE OF MINNESOTA
COUNTY OF OLMSTED

The foregoing Surveyor's Certificate was acknowledged before me this 28 day of September, 1981 by Donald R. Borcharding, Minnesota R.L.S. No. 10162.

Paul W. Yager
Notary Public, Olmsted County, MN
My Commission Expires 12-21-85



UTILITY EASEMENT DEFINED

An unobstructed easement for the construction and maintenance of all necessary overhead, underground, or surface public utilities, including rights to conduct drainage and trimming on said easement.

COUNTY SURVEYOR

I certify that this plat has been checked mathematically and that the plat conforms to the applicable platting laws.

Approved this 7th day of Oct., 1981

Roger W. Brand
Olmsted County Surveyor