

# HIAWATHA ADULT HOME SUBDIVISION

## Surveyor's Certificate

I hereby certify that I have surveyed and platted the property described on this plat as HIAWATHA ADULT HOME SUBDIVISION; that this is a correct representation of the survey; that all distances are correctly shown on the plat in feet and hundredths of a foot; that all monuments have been correctly placed in the ground as shown; that the outside boundary lines are correctly designated on the plat; and that there are no wet lands or public highways to be designated on said plat other than as shown thereon.

*James E. Swanson*  
James E. Swanson, R.L.S.  
Minnesota Registration Number 11622

State of Minnesota  
County of Olmsted

The surveyor's certificate was subscribed and sworn to before me, a Notary Public, this 17<sup>th</sup> day of July, 1981.

*Howard E. Hunt*  
Notary Public, Olmsted County, Minnesota

My commission expires



County Recorder

DOCUMENT NUMBER

I hereby certify that this instrument was filed in the Office of the County Recorder for record on this 27 day of August, 1981, at 10 o'clock A.M., and was duly recorded in the Olmsted County records.

*Paul Finstrom*  
County Recorder

Deputy

## Tax Statement

No delinquent taxes due and transfer entered this 31st day of June, 1981.

*Rose Browning*  
County Auditor  
*Mered Nelson*, Deputy

## County Surveyor

I certify that this plat has been checked mathematically and that the plat conforms to the applicable platting laws, this 17<sup>th</sup> day of July, 1981.

*Robert W. Brand*  
Olmsted County Surveyor

## City Approval

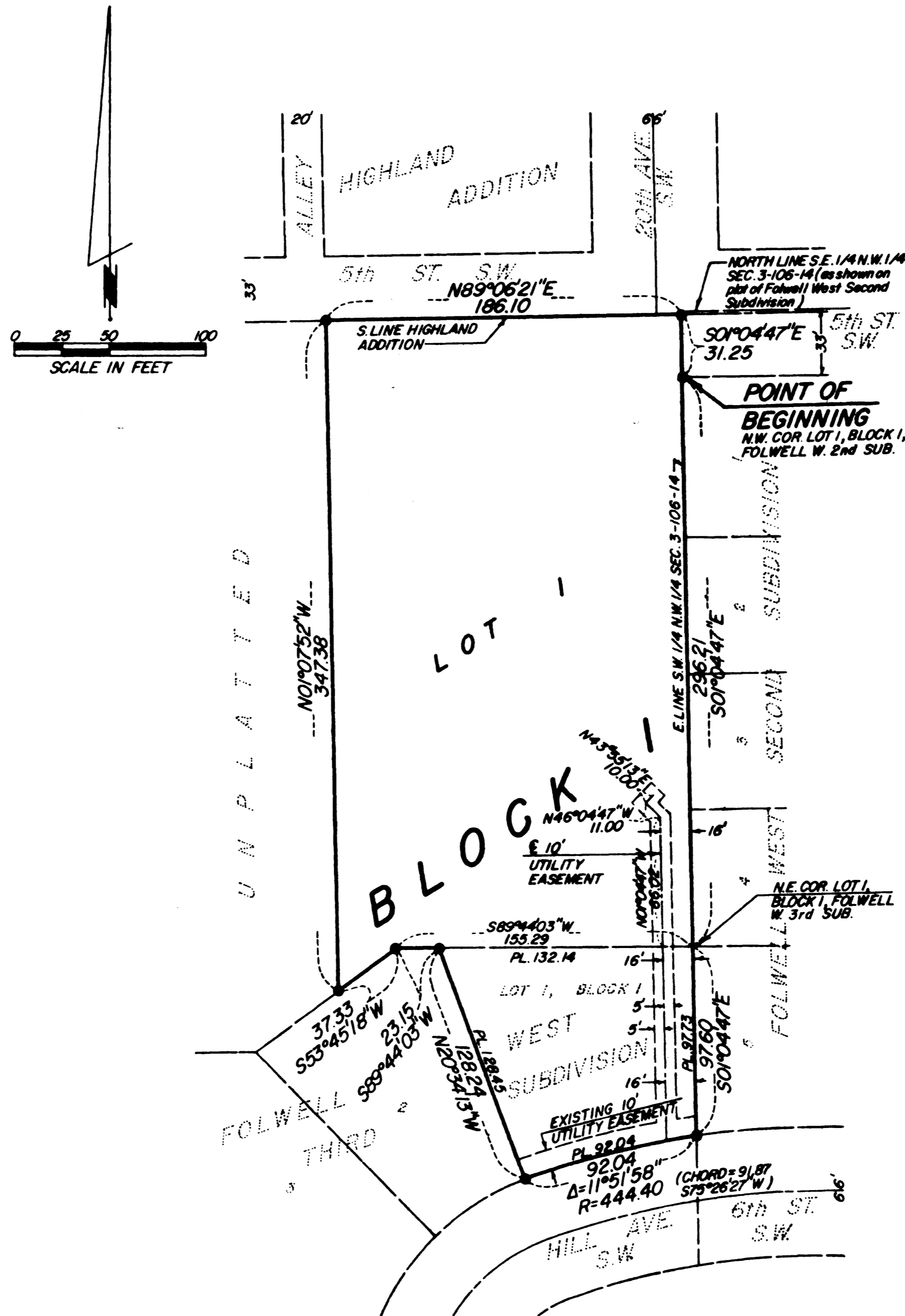
State of Minnesota  
County of Olmsted  
City of Rochester

I, Carole A. Grimm, City Clerk in and for the City of Rochester, do hereby certify that on the 20 day of July, 1981, the accompanying plat was duly approved by the Common Council of the City of Rochester. In testimony thereof I have hereunto signed my name and affixed the seal of said City of Rochester this 21 day of July, 1981.

*Carole A. Grimm*  
City Clerk

## Utility Easement Defined

An unobstructed easement for the construction and maintenance of all necessary overhead, underground, or surface public utilities including rights to conduct drainage and trimming on said easement.



NOTE:  
ALL MONUMENTS SHOWN THIS: ●  
ARE FOUND 3/8" PIPES:  
BASIS OF BEARING SYSTEM:  
ALL BEARINGS ARE IN RELATIONSHIP  
WITH THE EAST LINE S.W. 1/4 N.W. 1/4  
SEC. 3, WHICH IS ASSUMED TO BE  
S0°04'47"E.

## Instrument of Dedication

KNOW ALL MEN BY THESE PRESENTS: That Hiawatha Children's Home, Inc., a Minnesota Corporation, owner and proprietor of the following described property situated in the City of Rochester, State of Minnesota to wit:

Part of the Southwest Quarter of the Northwest Quarter of Section 3, Township 106 North, Range 14 West, Olmsted County, Minnesota, described as follows:

Beginning at the northwest corner of Lot 1, Block 1, Folwell West Second Subdivision, Rochester, Minnesota; thence South 01 degree 04 minutes 47 seconds East, assumed bearing, along the westerly line of said Block 1 a distance of 296.21 feet to the northeast corner of Lot 1, Block 1, Folwell West Third Subdivision, Rochester, Minnesota; thence South 89 degrees 44 minutes 03 seconds West along the north line of said Block 1 a distance of 155.29 feet; thence South 53 degrees 45 minutes 18 seconds West along the northerly line of said Block 1 a distance of 37.33 feet; thence North 01 degree 07 minutes 52 seconds West, 347.38 feet to the south line of the Highland Addition, Rochester, Minnesota; thence North 89 degrees 06 minutes 21 seconds East along said south line 186.10 feet to the westerly line of Block 1, Folwell West Second Subdivision if extended northerly; thence South 01 degree 04 minutes 47 seconds East along said extended line 31.25 feet to the point of beginning.

Containing 1.40 acres.

Also:

Lot 1, Block 1, Folwell West Third Subdivision, Rochester, Minnesota.

Containing 0.28 acres.

have caused the same to be surveyed and platted as HIAWATHA ADULT HOME SUBDIVISION and do hereby donate and dedicate to the public for the public use forever the easements as shown on this plat for drainage and utility purposes only.

In witness whereof said Hiawatha Children's Home, Inc. has caused these presents to be signed by its proper officers this 17<sup>th</sup> day of July, 1981.

*Larry Johnson*  
Larry Johnson, President

*Douglas H. Butler*  
Douglas H. Butler, Executive Director

State of Minnesota  
County of Olmsted

The foregoing instrument was acknowledged before me this 17<sup>th</sup> day of July, 1981, by Larry Johnson, its President, and Douglas H. Butler, its Executive Director, officers of Hiawatha Children's Home, Inc., on behalf of the corporation.

*Howard E. Hunt*  
Notary Public, Olmsted County, Minnesota

My commission expires



County Registrar of Titles 34423  
DOCUMENT NUMBER

I hereby certify that this instrument was filed in the Office of the Registrar of Titles for record on this 27<sup>th</sup> day of August, 1981, at O'clock 10 A.M., and was duly recorded in Olmsted County records.

*Debra O. Dudgeon*  
Registrar of Titles, Olmsted County  
Deputy

# OFFICIAL PLAT

PREPARED BY:  
McGHEE & BETTS, INC.  
CONSULTING ENGINEERS  
LAND SURVEYORS  
ROCHESTER, MINNESOTA