

NELSON'S THIRD SUBDIVISION

Surveyors Certificate

I hereby certify that I have surveyed and platted the property described on this plat as NELSON'S THIRD SUBDIVISION; that this is a correct representation of the survey; that all distances are correctly shown on the plat in feet and hundredths of a foot; that all monuments have been correctly placed in the ground as shown; that the outside boundary lines are correctly designated on the plat; and that there are no wet lands or public highways to be designated on said plat other than as shown thereon.

James E. Swanson
James E. Swanson R.L.S.
Minnesota Registration Number 11622

State of Minnesota
County of Olmsted

The surveyor's certificate was subscribed and sworn to before me, a Notary Public, this 4th day of February 1981.

Howard E. Hunt
Notary Public, Olmsted County

My commission expires Dec. 9, 1985

Planning Commission

We, the members of the Olmsted County Planning Advisory Commission, do hereby certify that we have examined the plat as shown, and find that it conforms to the provisions of the Subdivision Ordinance of Olmsted County.

Doris C. Blum
Commission Chairman

Township Board

The Township Board of Supervisors of Marion Township, Olmsted County, do hereby certify that we have approved the accompanying plat. In testimony whereof, we have signed our names this 10th day of Feb. 1981.

April Carlson
Board Chairman

Jay Kiero
Town Clerk

County Board of Health

The Olmsted County Board of Health has approved this plat for water supply and sewage disposal system.

John L. ...
Public Health Engineer

COUNTY RECORDER

DOCUMENT NUMBER

I hereby certify that this instrument was filed in the Office of the County Recorder for record on this 2 day of April 1981, at 1:34 O'clock P.M., and was duly recorded in the Olmsted County records.

By Paul Simons
County Recorder

Deputy

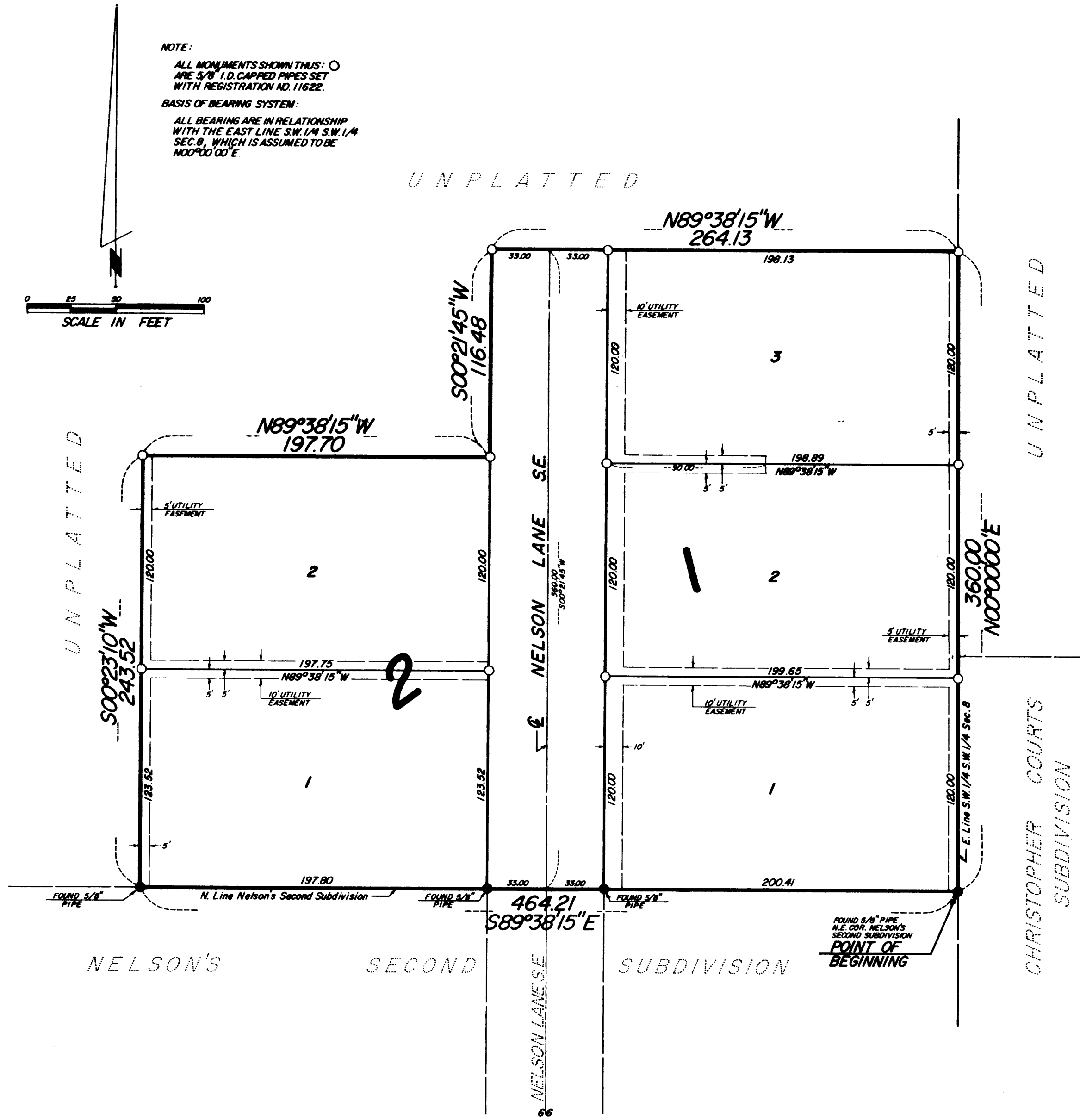
County Engineer

Approved this 12th day of Feb 1981 by Olmsted County Engineer

J.K. Dolan
J.K. Dolan, County Engineer

NOTE:

ALL MONUMENTS SHOWN THIS PLAT ARE 5/8" I.D. CAPPED PIPES SET WITH REGISTRATION NO. 11622.
BASIS OF BEARING SYSTEM:
ALL BEARINGS ARE IN RELATIONSHIP WITH THE EAST LINE SW 1/4 SW 1/4 SEC. 8, WHICH IS ASSUMED TO BE N00°00'00"E.



Instrument of Dedication

KNOW ALL MEN BY THESE PRESENTS: That Roger W. Brand and Betty A. Brand, husband and wife, and Robert J. Nelson, a single person, owners and proprietors of the following described property situated in the County of Olmsted, State of Minnesota to wit:

A part of the Southwest Quarter of the Southwest Quarter of Section 8, Township 106 North, Range 13 West, Olmsted County, Minnesota Described as follows:

Beginning at the Northeast Corner of NELSON'S SECOND SUBDIVISION, Thence North 00 degrees 00 minutes 00 seconds East along the East line of the Southwest Quarter of the Southwest Quarter of said Section 8 for a distance of 360.00 feet; thence North 89 degrees 38 minutes 15 seconds West for a distance of 264.13 feet; thence South 00 degrees 21 minutes 45 seconds West for a distance of 116.48 feet; thence North 89 degrees 38 minutes 15 seconds West for a distance of 197.70 feet; thence South 00 degrees 23 minutes 10 seconds West for a distance of 243.52 feet to a point in the North line of NELSON'S SECOND SUBDIVISION; thence South 89 degrees 38 minutes 15 seconds East along said North line for a distance of 464.21 feet to the point of beginning.

Contains 3.30 Acres.

have caused the same to be surveyed and platted as NELSON'S THIRD SUBDIVISION and do hereby donate and dedicate to the public, for the public use forever the thoroughfare and also dedicate the easements as shown on this plat for drainage and utility purposes only.

In witness whereof said Roger W. Brand and Betty A. Brand have caused these presents to be signed this 10th day of Feb. 1981.

Roger W. Brand Betty A. Brand
Roger W. Brand Betty A. Brand

State of Minnesota
County of Olmsted

The foregoing instrument was acknowledged before me this 10th day of February 1981 by Roger W. Brand and Betty A. Brand, husband and wife.

Delores L. Molnie
Notary Public

My commission expires April 25, 1984

In witness whereof said Robert J. Nelson has caused these presents to be signed this 19th day of Feb. 1981.

Robert J. Nelson
Robert J. Nelson

State of Minnesota
County of Olmsted

The foregoing instrument was acknowledged before me this 19th day of February 1981 by Robert J. Nelson, a single person.

Delores L. Molnie
Notary Public

My commission expires April 25, 1984

County Board

State of Minnesota
County of Olmsted

I do hereby certify that the accompanying plat was duly approved by the County Board of Commissioners at a meeting held on the 24th day of February 1981. In testimony whereof I have signed by name and affixed the seal of said County this 24th day of April 1981.

Paul Simons
Olmsted County Auditor

Tax Statement

No delinquent taxes due and transfer entered this 24th day of April 1981.

Paul Simons
County Auditor

County Surveyor

I certify that this plat has been checked mathematically and that the plat conforms to the applicable platting laws, this 5th day of Feb. 1981.

Roger W. Brand
Olmsted County Surveyor

Utility Easement Defined:

An unobstructed easement for the construction and maintenance of all necessary overhead, underground, or surface public utilities including rights to conduct drainage and trimming on said easement.

OFFICIAL PLAT

PREPARED BY:
McGHEE & BETTS, INC.
CONSULTING ENGINEERS
LAND SURVEYORS
ROCHESTER, MINNESOTA